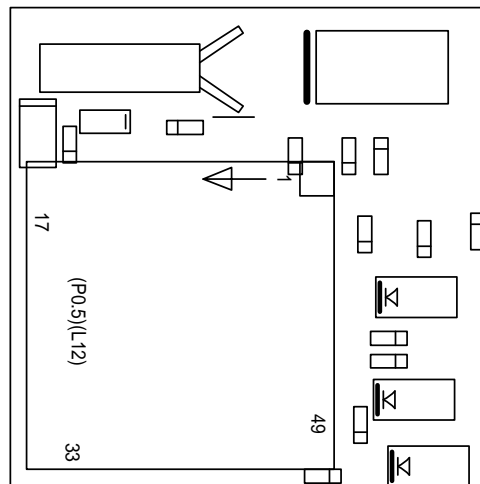


SWISSP41_B

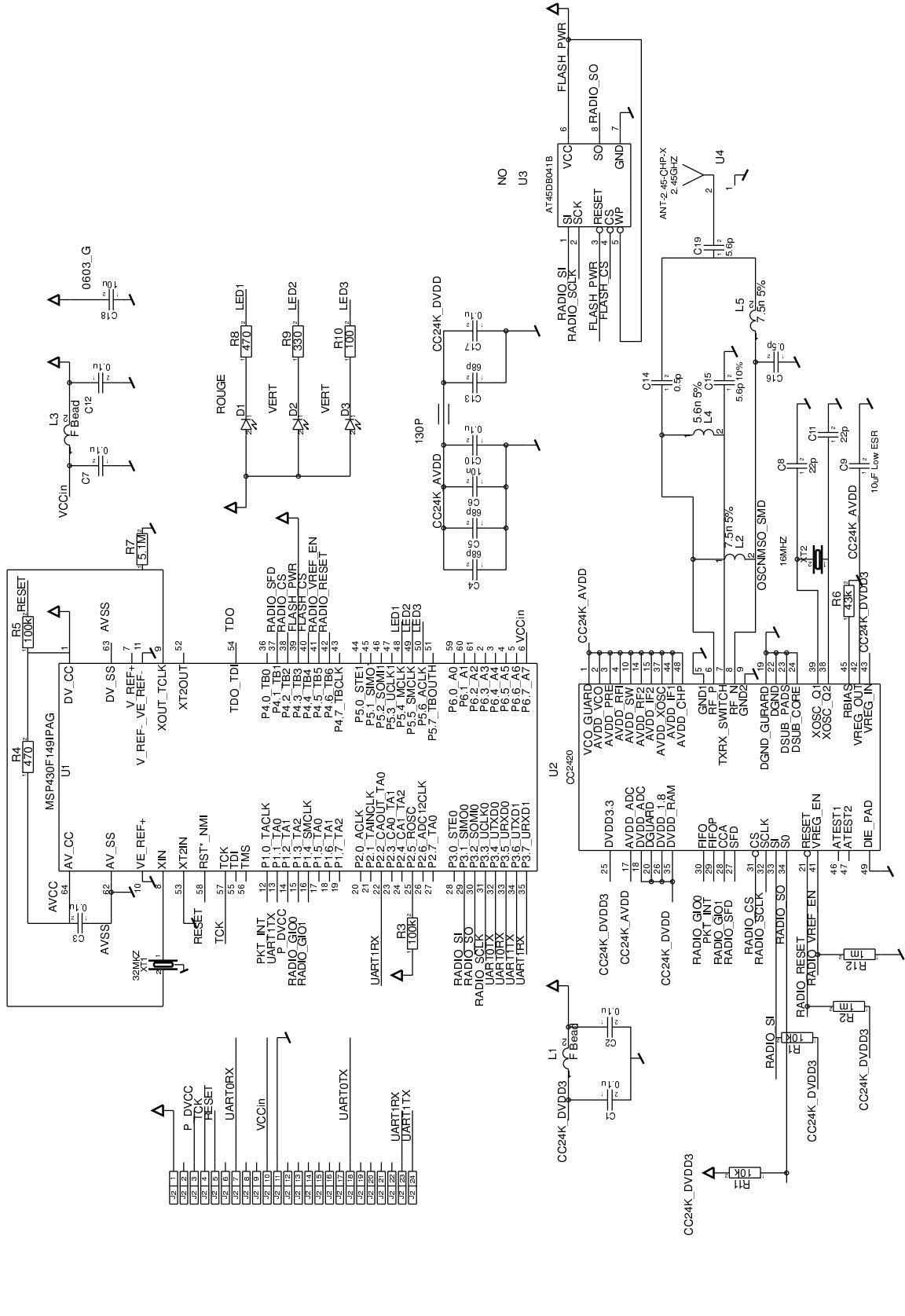
LANOS N.Correll
Phone: 36890
Tue Mar 15 16:56:41 MET 2005

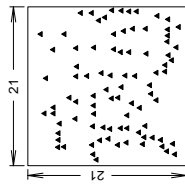
MFG_DATE: Undefined
QUANTITY: 2
SOLDERMASK: mtop mbot
MATERIAL: FR4 : 0.8 mm



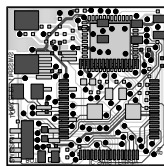
CONTENTS	PAGE
Root Schema swissp41	2
Xref swissp41	3
Drill	4
Etch	5
OutDetail_Bottom	6
OutDetail_Top	7
Outline_Top	8
Gerber_mtop	9
Gerber_top	10
Gerber_vcc	11
Gerber_gnd	12
Gerber_bot	13
Gerber_mbot	14
Gerber_cont	15

CONTENTS	PAGE
Component Report	16
BOM Report	17
NC-Pins Report	18
Power-Pins Report	19
Single Node Nets	20





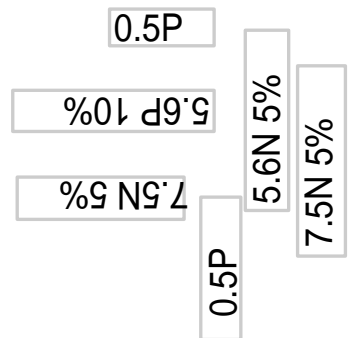
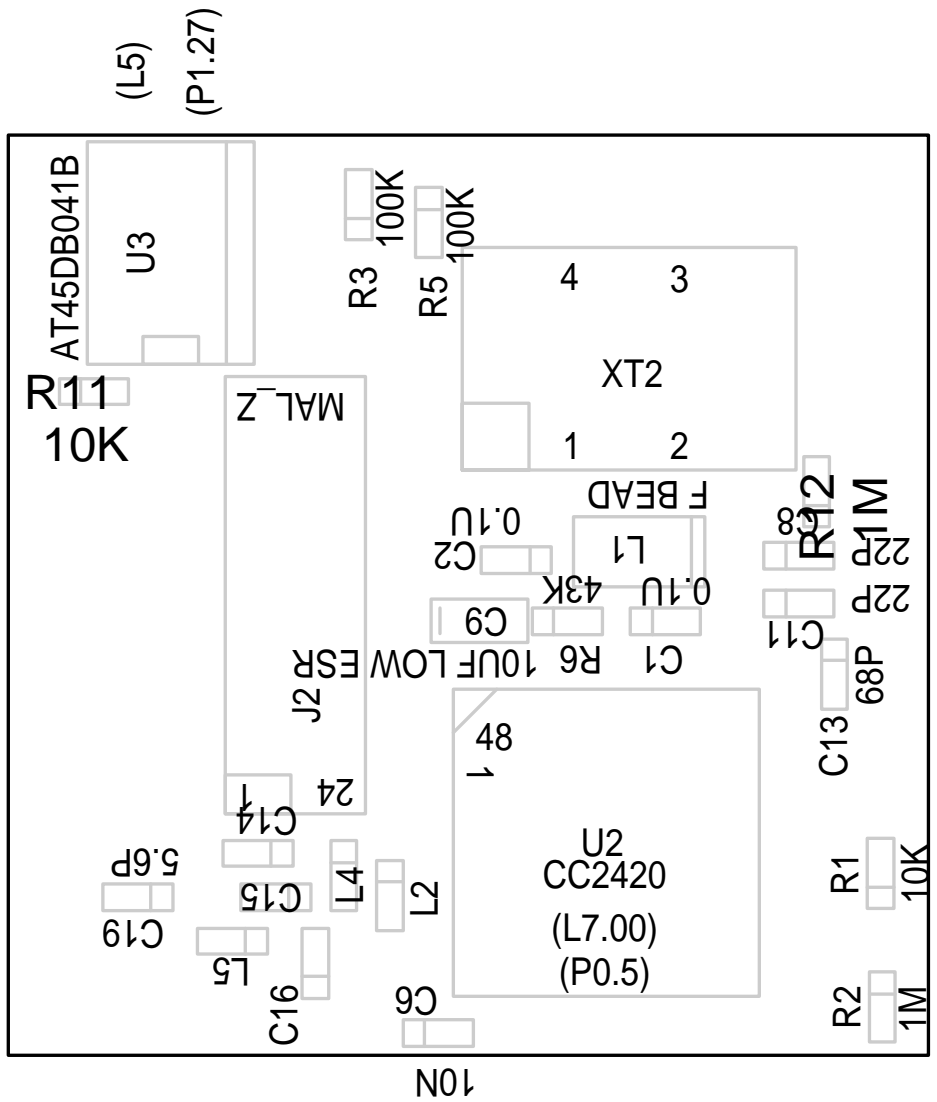
DRILL CHART			
FIGURE	SIZE	PLATED	QTY
.	0.306	PLATED	87

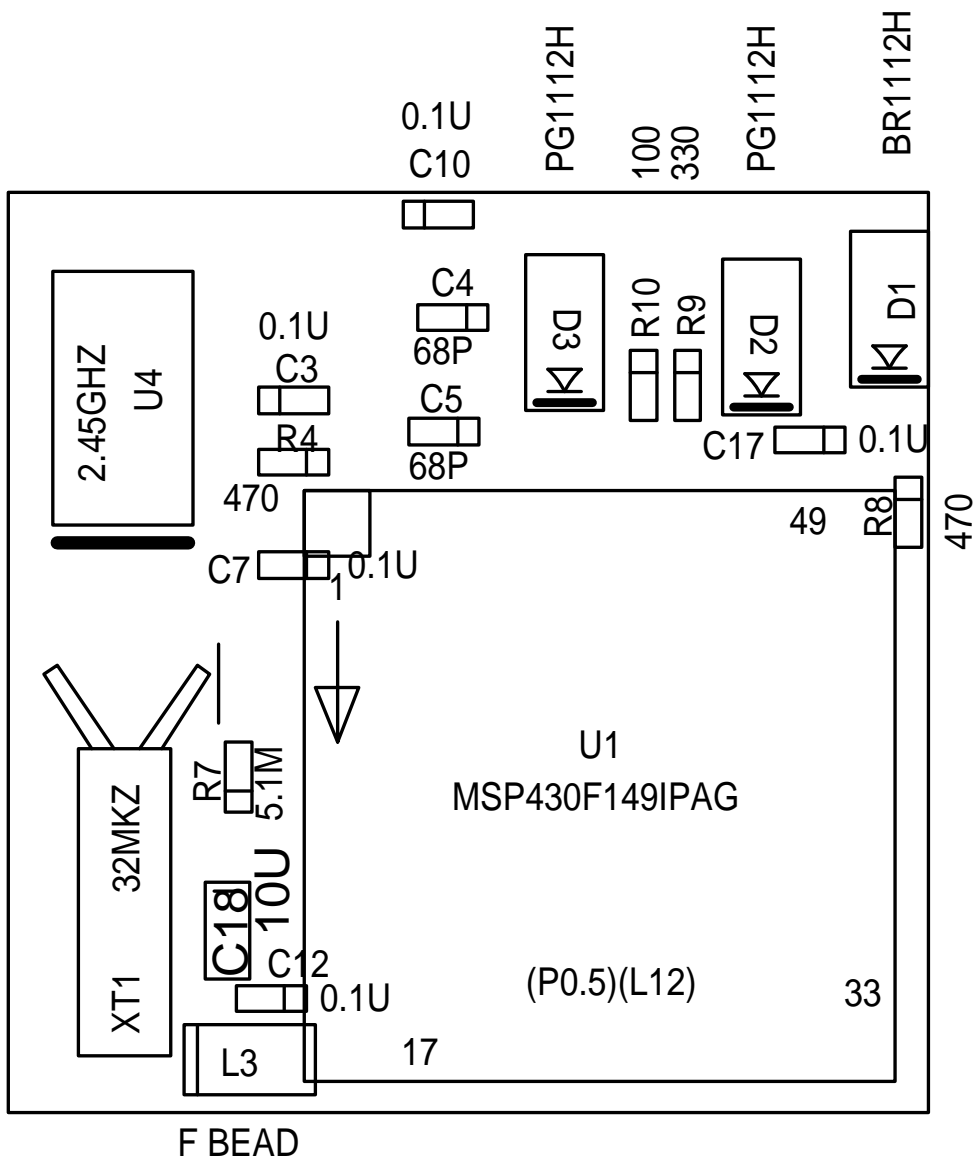


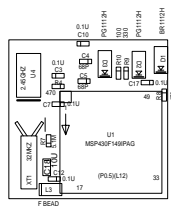
TITRE:SWISSP41

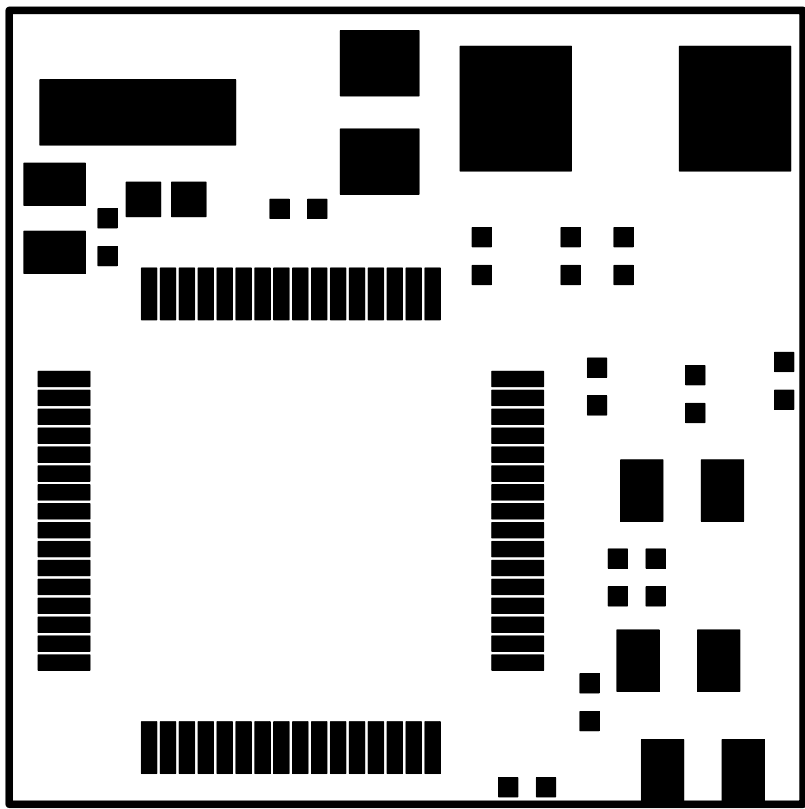
LABORATOIRE:IC-SWIS
ENGINEER:J.Fritschy

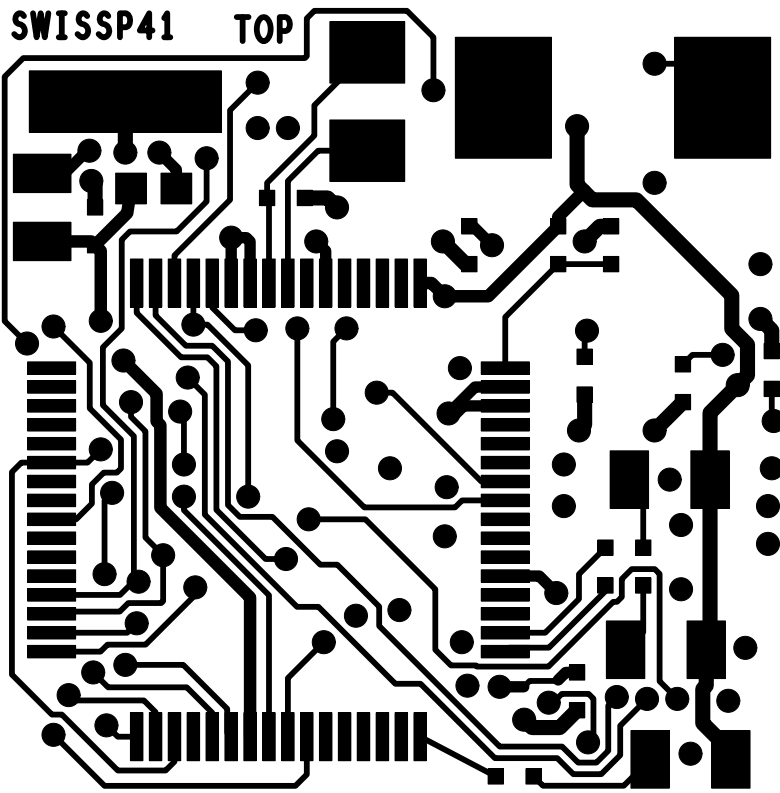
DATE:13.12.2004
EPFL-ACORT-PB

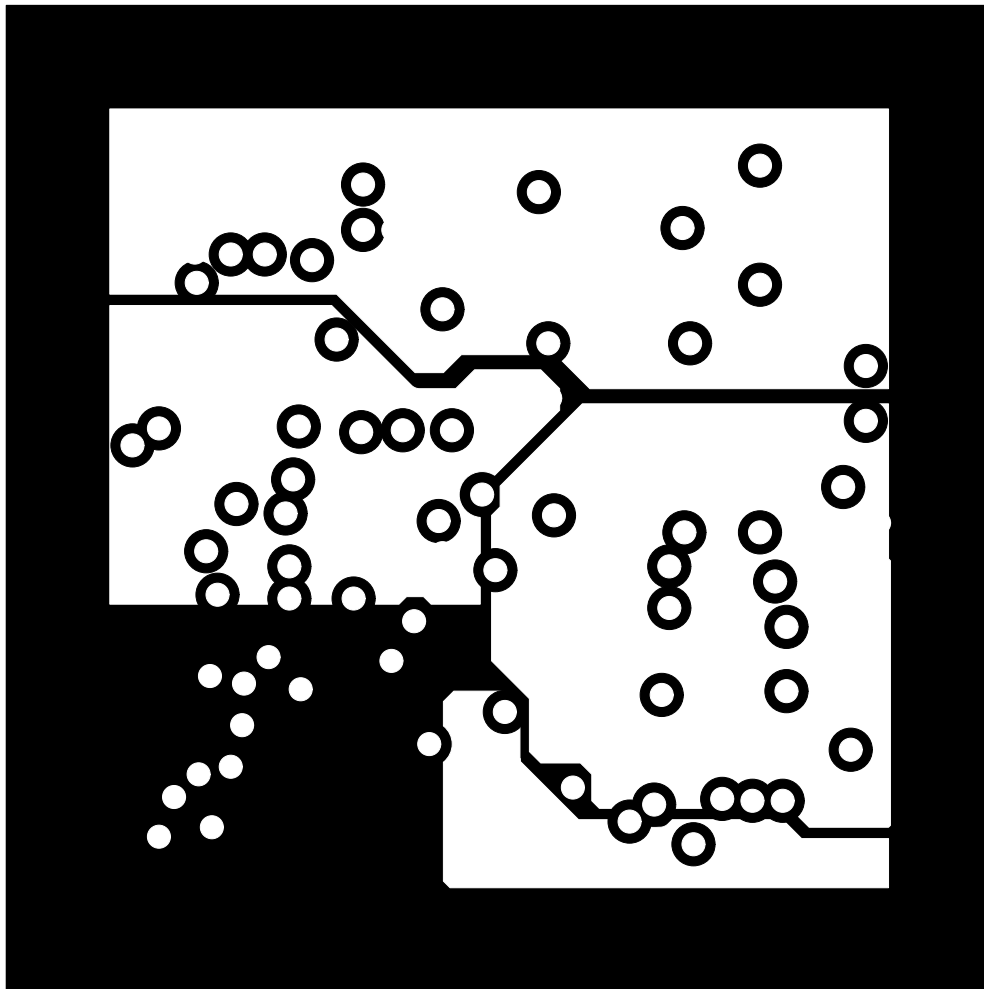


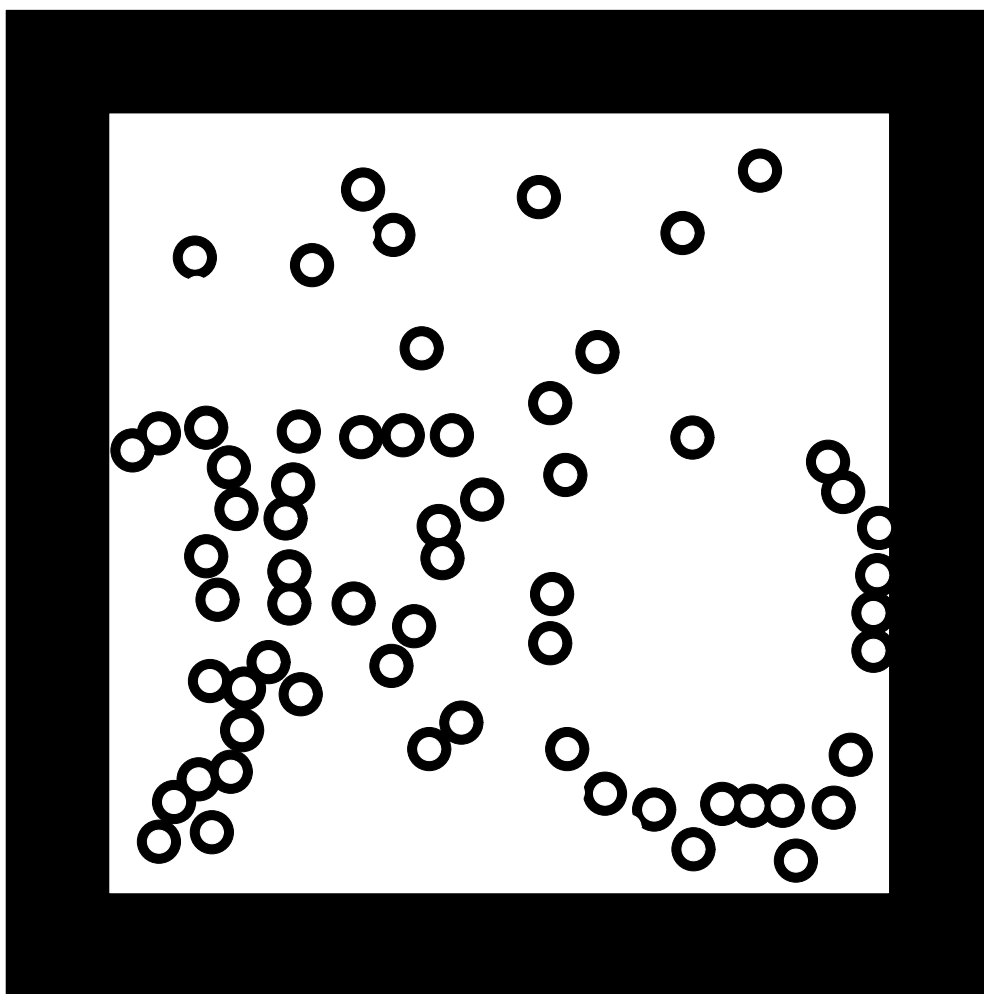


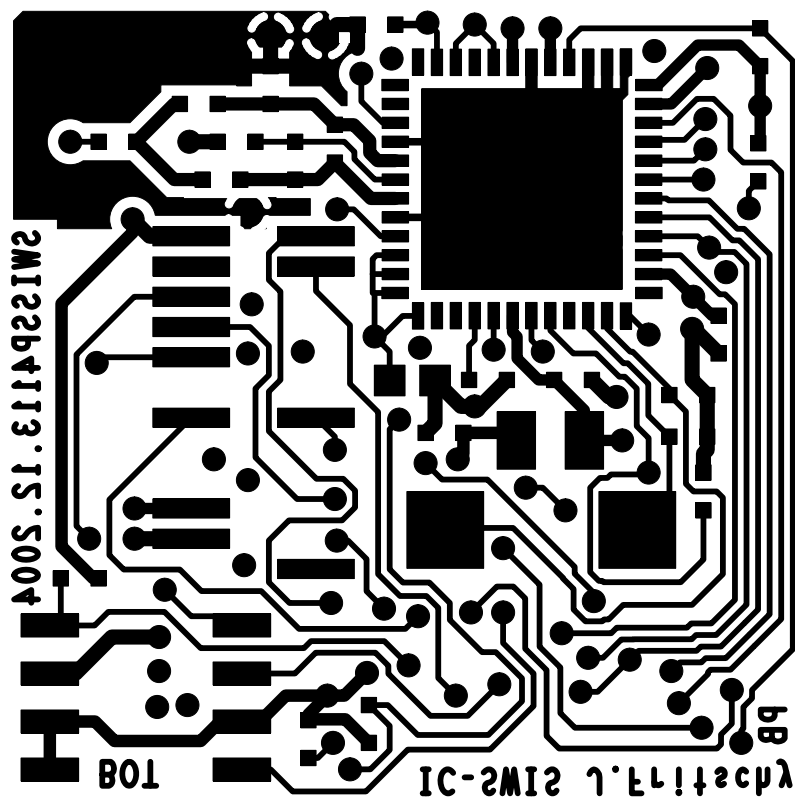


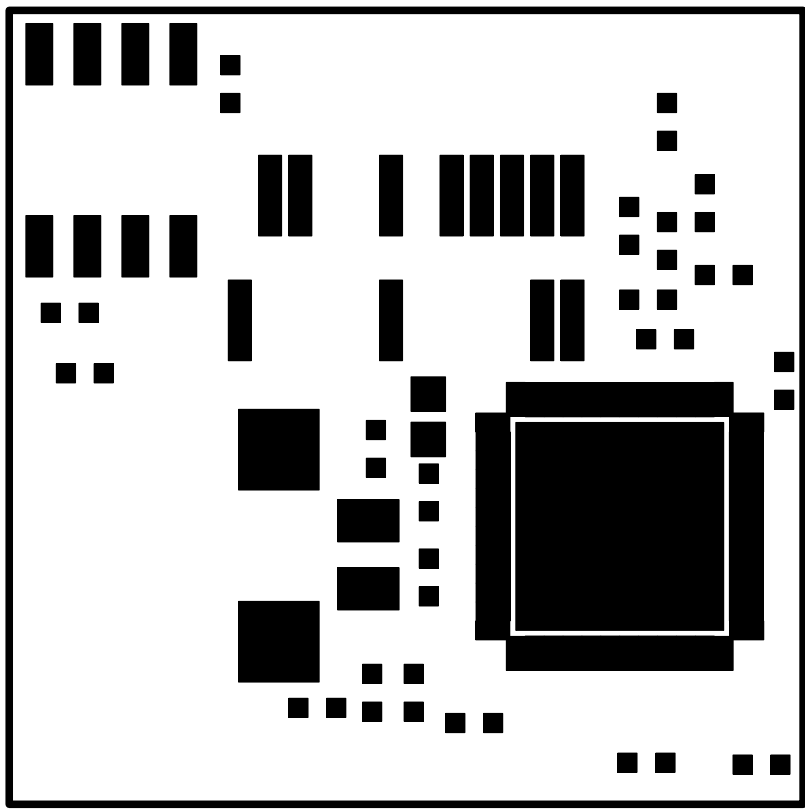


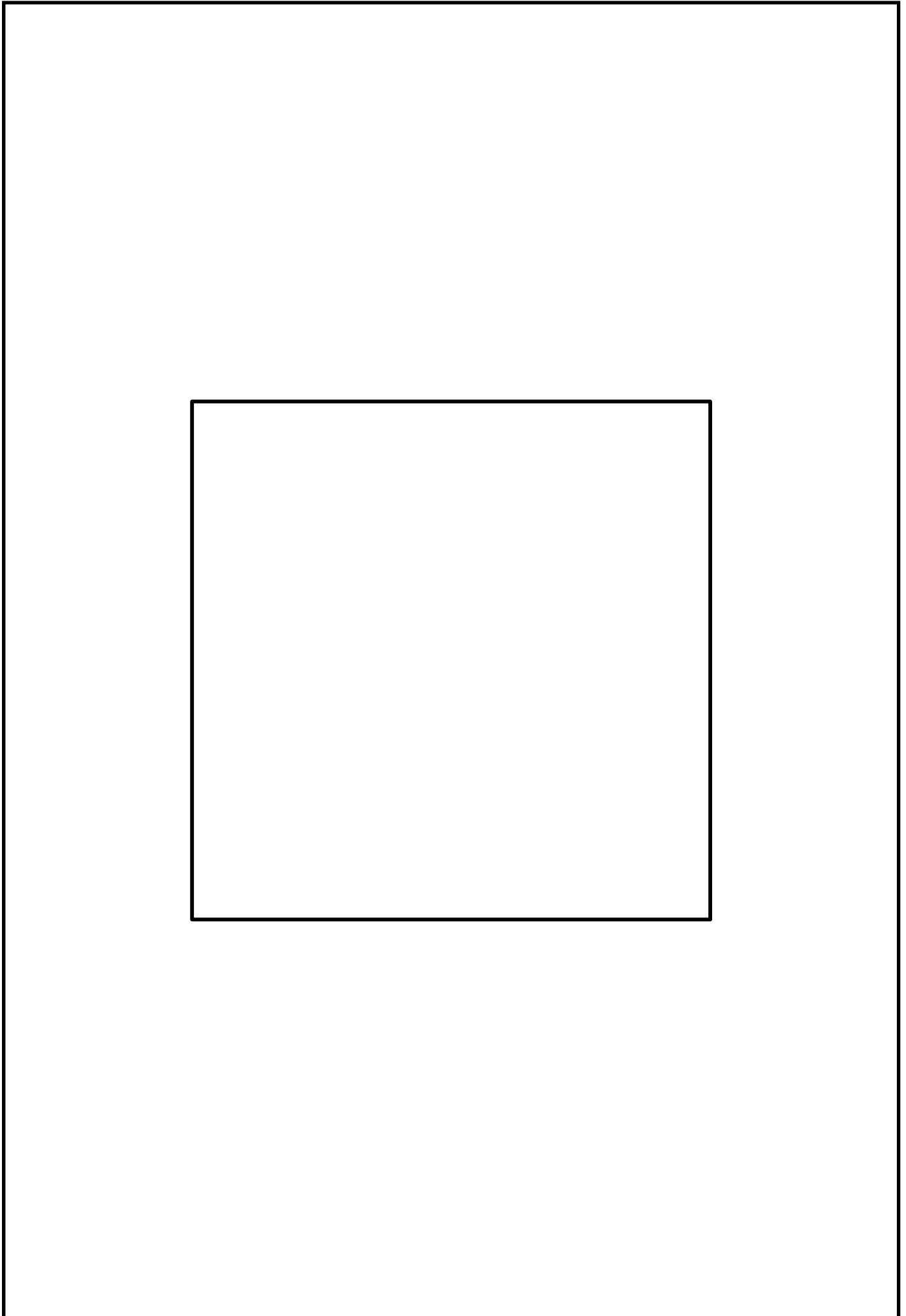












Component Report SWISSP41_B

swissp41_gloss

Tue Mar 15 16:56:45 MET 2005

Ref Des	Device Type	Value	Package Type	x	y	ang	Mir	Remark
C1	0402	0.1U	0402	11.100	6.000	0.000	YES	
C2	0402	0.1U	0402	9.700	9.400	180.000	YES	
C3	0402	0.1U	0402	16.250	14.500	0.000	NO	
C4	0402	68P	0402	18.150	10.850	180.000	NO	
C5	0402	68P	0402	15.550	11.050	180.000	NO	
C6	0402	10N	0402	20.500	11.200	0.000	YES	
C7	0402	0.1U	0402	12.500	14.500	180.000	NO	
C8	0402	22P	0402	9.600	2.950	0.000	YES	
C9	0603	10UF LOW ESR	0603_G	11.085	10.250	0.000	YES	
C10	0402	0.1U	0402	20.500	11.200	0.000	NO	
C11	0402	22P	0402	10.700	2.950	0.000	YES	
C12	0402	0.1U	0402	2.600	15.000	180.000	NO	
C13	0402	68P	0402	12.300	2.150	90.000	YES	
C14	0402	0.5P	0402	16.400	15.300	180.000	YES	
C15	0402	5.6P 10%	0402	17.400	14.900	180.000	YES	
C16	0402	0.5P	0402	18.900	14.000	270.000	YES	
C17	0402	0.1U	0402	15.350	2.700	180.000	NO	
C18	0603	10U	0603_G	4.150	16.000	270.000	NO	
C19	0402	5.6P	0402	17.400	18.050	180.000	YES	
D1	BR1112H	BR1112H	SMDLED	18.350	0.900	90.000	NO	
D2	PG1112H	PG1112H	SMDLED	17.700	3.800	90.000	NO	
D3	PG1112H	PG1112H	SMDLED	17.800	8.300	90.000	NO	
J2	CO24		SAMM24_08MM_Z	10.500	14.450	0.000	YES	
L1	L	F BEAD	0805_G	9.500	6.600	180.000	YES	
L2	L	7.5N 5%	0402	17.350	12.300	90.000	YES	
L3	L	F BEAD	0805_G	1.200	15.500	0.000	NO	
L4	L	5.6N 5%	0402	16.900	13.350	90.000	YES	
L5	L	7.5N 5%	0402	18.400	15.900	180.000	YES	
R1	R	10K	0402	16.860	1.100	270.000	YES	
R2	R	1M	0402	19.900	1.050	90.000	YES	
R3	R	100K	0402	1.600	13.000	270.000	YES	
R4	R	470	0402	14.850	14.500	180.000	NO	
R5	R	100K	0402	2.000	11.400	90.000	YES	
R6	R	43K	0402	11.100	8.250	0.000	YES	
R7	R	5.1M	0402	7.650	15.750	90.000	NO	
R8	R	470	0402	13.700	0.450	270.000	NO	
R9	R	330	0402	16.600	5.500	270.000	NO	
R10	R	100	0402	16.600	6.500	270.000	NO	
R11	R	10K	0402	5.850	19.050	0.000	YES	
R12	R	1M	0402	8.150	2.550	270.000	YES	
U1	MSP430F149IPAG		STQFP64	7.450	7.500	270.000	NO	
U2	CC2420		QLP48_7X7MM	16.150	7.350	90.000	YES	
U3	AT45DB041B		SO8	2.700	17.300	270.000	YES	
U4	ANT	2.45GHZ	2412	16.300	18.400	90.000	NO	
XT1	XTALGND	32MKZ	SM26FA	9.800	18.300	180.000	NO	
XT2	XTAL	16MHZ	OSCNMSO_SMD	5.100	6.840	90.000	YES	

Total Component count 46

BOM Report SWISSP41_B

swissp41_gloss

Tue Mar 15 16:56:46 MET 2005

Device	Package	Value	Nb	Reference Designators					Remark
0402-0.1U	0402	0.1U	7	C1 C12	C2 C17	C3	C7	C10	
0402-0.5P	0402	0.5P	2	C14	C16				
0402-10N	0402	10N	1	C6					
0402-22P	0402	22P	2	C8	C11				
0402-5.6P 10%	0402	5.6P 10%	1	C15					
0402-5.6P	0402	5.6P	1	C19					
0402-68P	0402	68P	3	C4	C5	C13			
0603-1-10U	0603_G	10U	1	C18					
0603-1-10UF LOW ESR	0603_G	10UF LOW ESR	1	C9					
ANT-2.45-CHP-X-2.45G	2412	2.45GHZ	1	U4					
AT45DB041B	SO8		1	U3					
BR1112H	SMDLED	BR1112H	1	D1					
CC2420	QLP48_7X7MM		1	U2					
CO24-16	SAMM24_08MM_Z		1	J2					
L-5A-5.6N 5%	0402	5.6N 5%	1	L4					
L-5A-7.5N 5%	0402	7.5N 5%	2	L2	L5				
L-5C1-F BEAD	0805_G	F BEAD	2	L1	L3				
MSP430F149IPAG	STQFP64		1	U1					
PG1112H	SMDLED	PG1112H	2	D2	D3				
R-19-100	0402	100	1	R10					
R-19-100K	0402	100K	2	R3	R5				
R-19-10K	0402	10K	2	R1	R11				
R-19-1M	0402	1M	2	R2	R12				
R-19-330	0402	330	1	R9					
R-19-43K	0402	43K	1	R6					
R-19-470	0402	470	2	R4	R8				
R-19-5.1M	0402	5.1M	1	R7					
XTAL-XL-1C-16MHZ	OSCNMSO_SMD	16MHZ	1	XT2					
XTALGND-4-32MKZ	SM26FA	32MKZ	1	XT1					

Total Component count 46

NC Pins Report SWISSP41_B

swissp41_gloss

Tue Mar 15 16:56:46 MET 2005

Ref Des	Device	Nb	Not Connected Pins										Remark
J2	CO24-16	14	2	6	8	9	12	13	14	15	16	17	
			19	20	21	22							
U1	MSP430F149IPAG	28	2	3	4	5	7	17	18	19	20	21	
			23	24	26	27	28	36	43	44	45	46	
			47	51	52	55	56	59	60	61			
U2	CC2420	2	46	47									
U4	ANT-2.45-CHP-X-2.45G	1	1										

Total count 45

Power Pins Report SWISSP41_B

swissp41_gloss

Tue Mar 15 16:56:47 MET 2005

Ref Des	Device	Name	Power Pins						Remark	
U1	MSP430F149IPAG	GND	10	11	53	62	63			
		VCC	1	39						
U2	CC2420	GND	5	9	19	22	23	24	49	
U3	AT45DB041B	GND	7							
		VCC	3	5	6					

Total count 3

Single Node Nets Report SWISSP41_B

swissp41_gloss

Tue Mar 15 16:56:48 MET 2005

Netname	Node	Device	Remark
TDO	U1.54	MSP430F149IPAG	

Total Nets count 1