

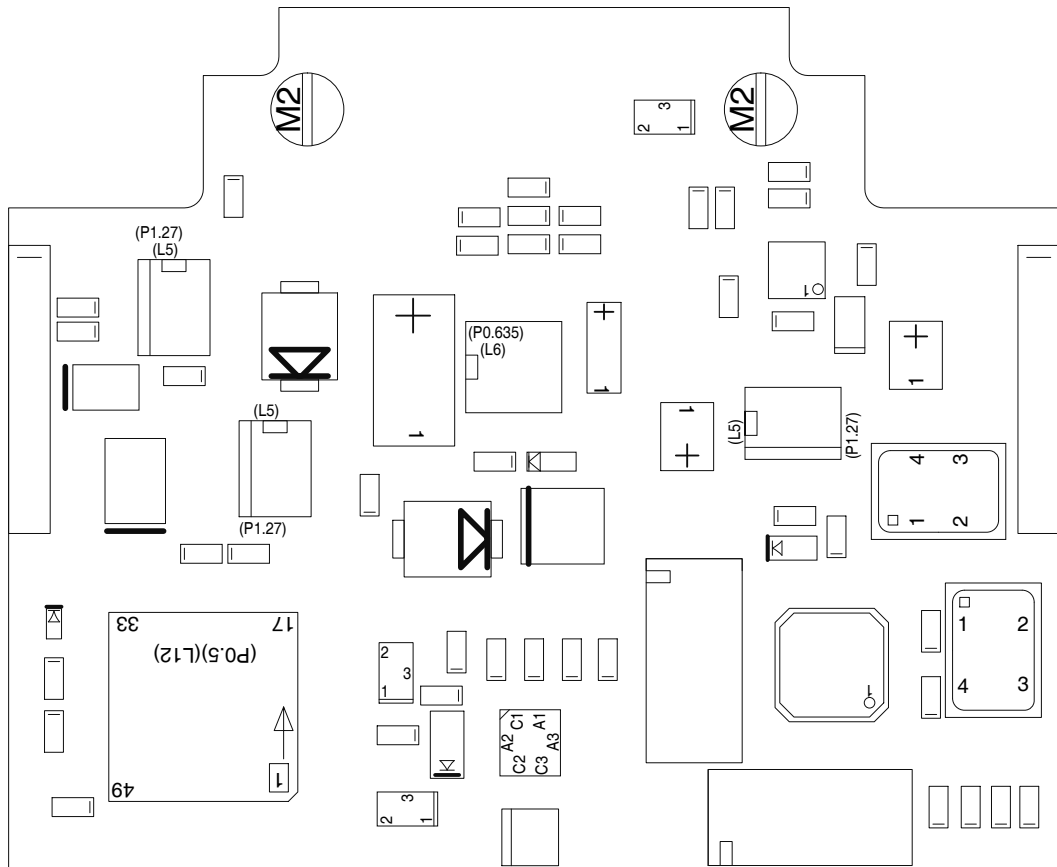
SAL3LEGTOP_D

Developed by EPFL-IC-LSL A.Crespi.

PCB Design by Peter.Bruehlmeier@epfl.ch

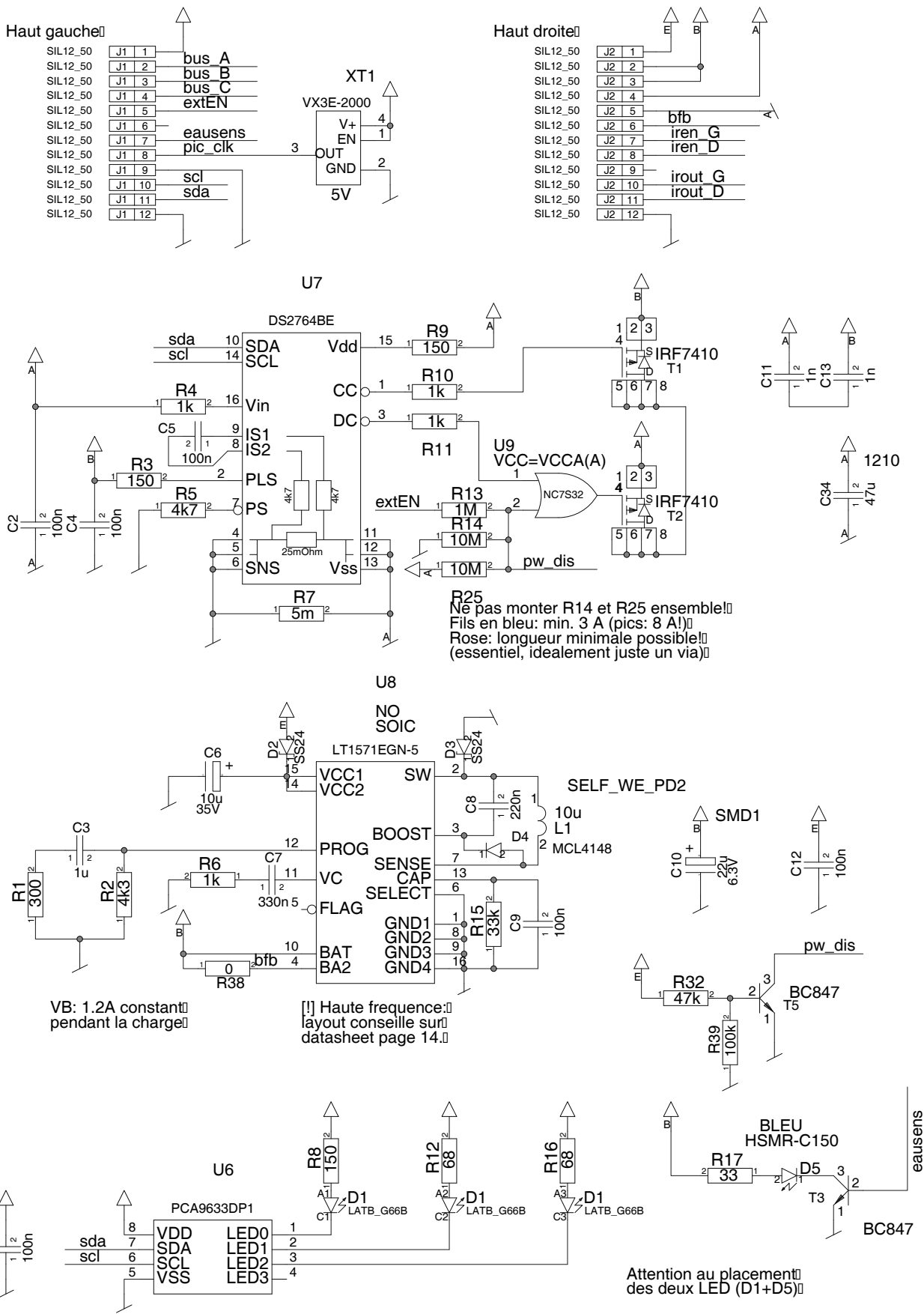
Phone: +41 21 6936630
 Date: 24.11.2011 8:47:25
 MFG_DATE: 28.11.2011

QUANTITY: 3
 SOLDERMASK: mtop mbot
 MATERIAL: FR4 : 0.8 mm
 Surface: HAL



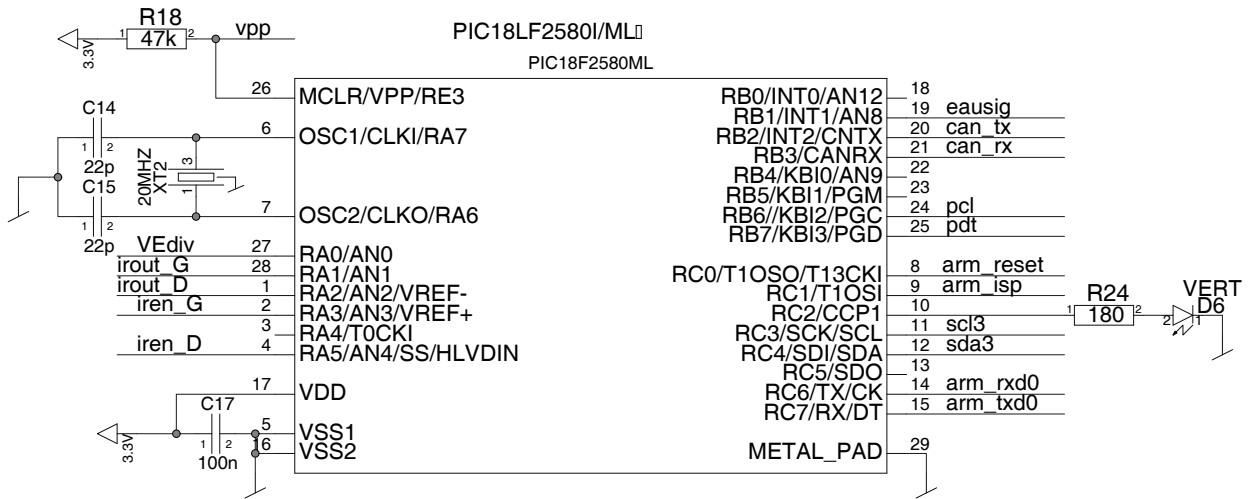
CONTENTS	PAGE
Assembly_Bottom	5
Assembly_Top	6
Etch_Bottom	7
Etch_Top	8
Nc_Drill-1-2	9
Outline_Bottom	10
Outline_Top	11
Gerber_top	12
Gerber_bot	13
Gerber_mtop	14
Gerber_mbot	15
Gerber_cont	16

CONTENTS	PAGE
Component Report	17 – 19
BOM Report	20 – 21
Nc Pins Report	22
Power Pins Report	23
Single Node Nets	24

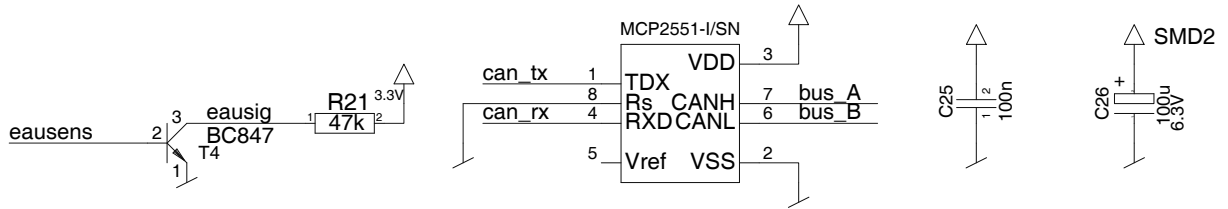


sal3legtop		ENGINEER:
DESIGN: design.sch_1		A.Crespi
DATE:		IC/LSL
Wed Nov 23 11:14:58 2011		PAGE:
		1 OF 3

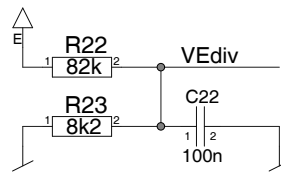
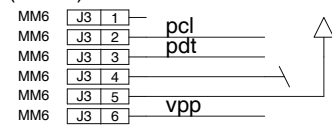
U1



U3

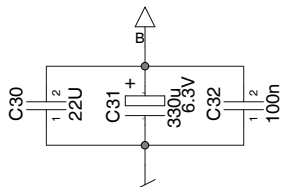
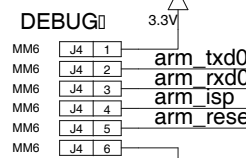
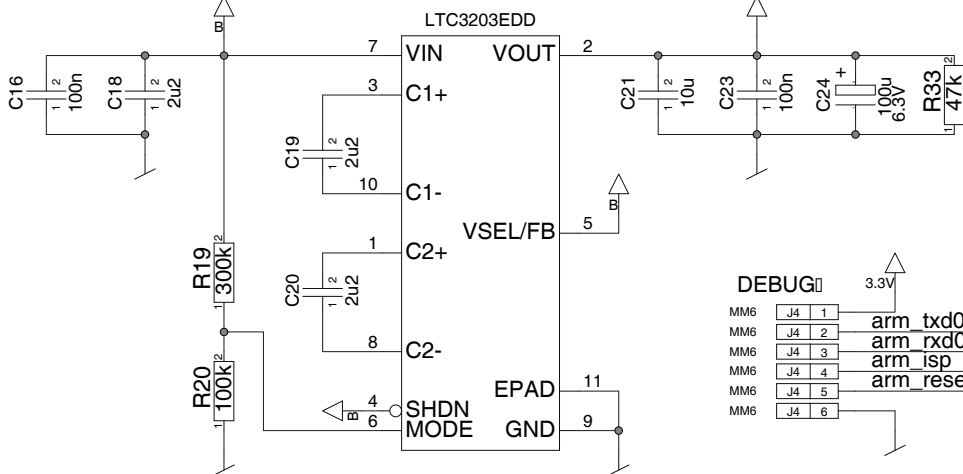


PROGR. (haut.0)

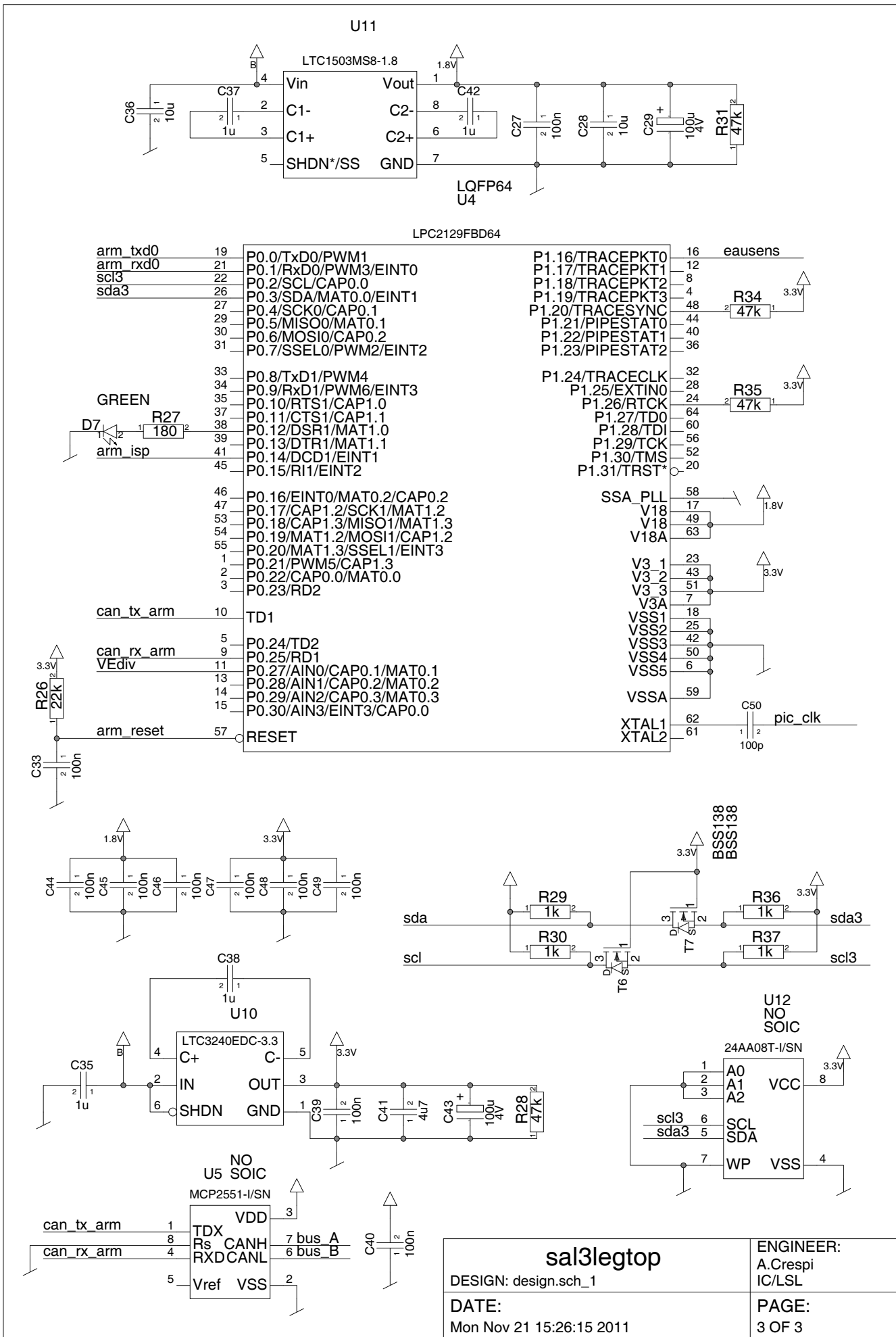


U2

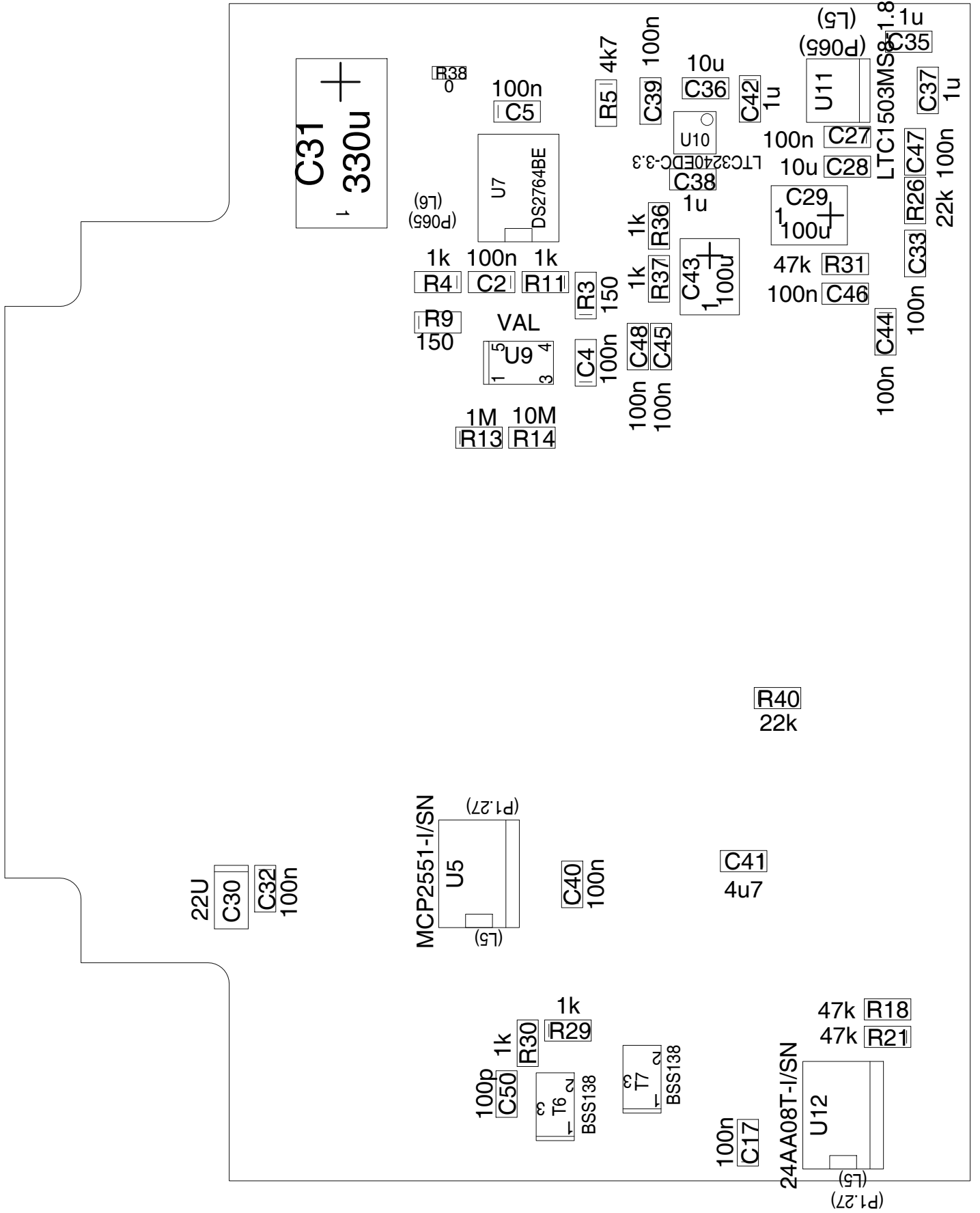
NO SOIC

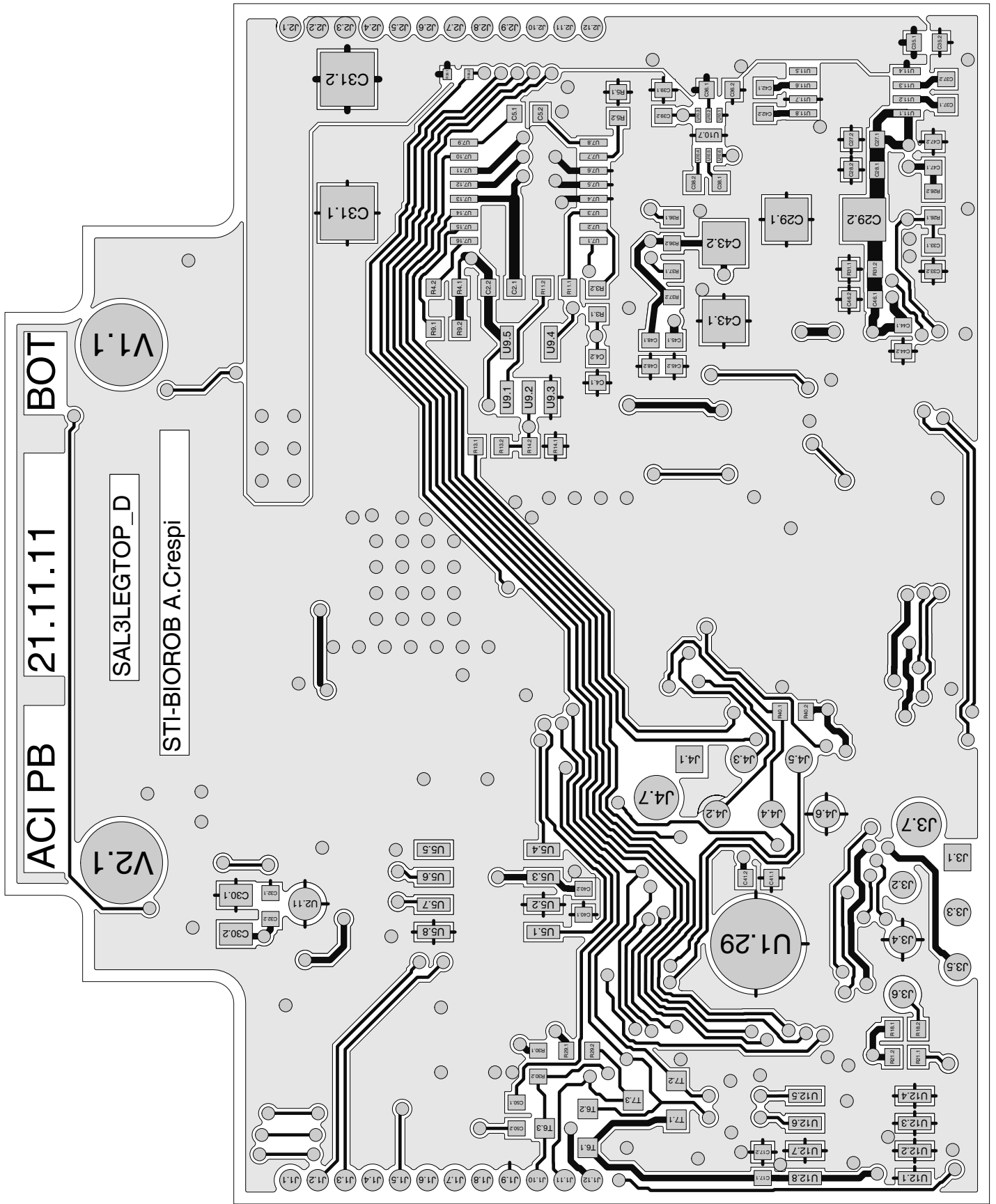


sal3legtop		ENGINEER:
DESIGN: design.sch_1		A.Crespi
DATE:		IC/LSL
Tue Nov 22 10:46:21 2011		PAGE:
		2 OF 3

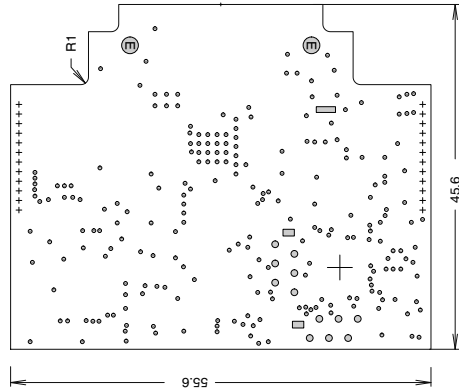


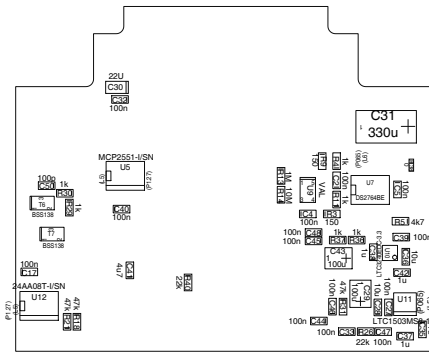
sal3legtop		ENGINEER:
DESIGN: design.sch_1		A.Crespi
DATE:		IC/LSL
Mon Nov 21 15:26:15 2011		PAGE:
		3 OF 3

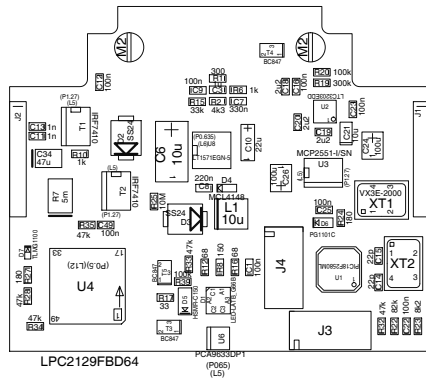


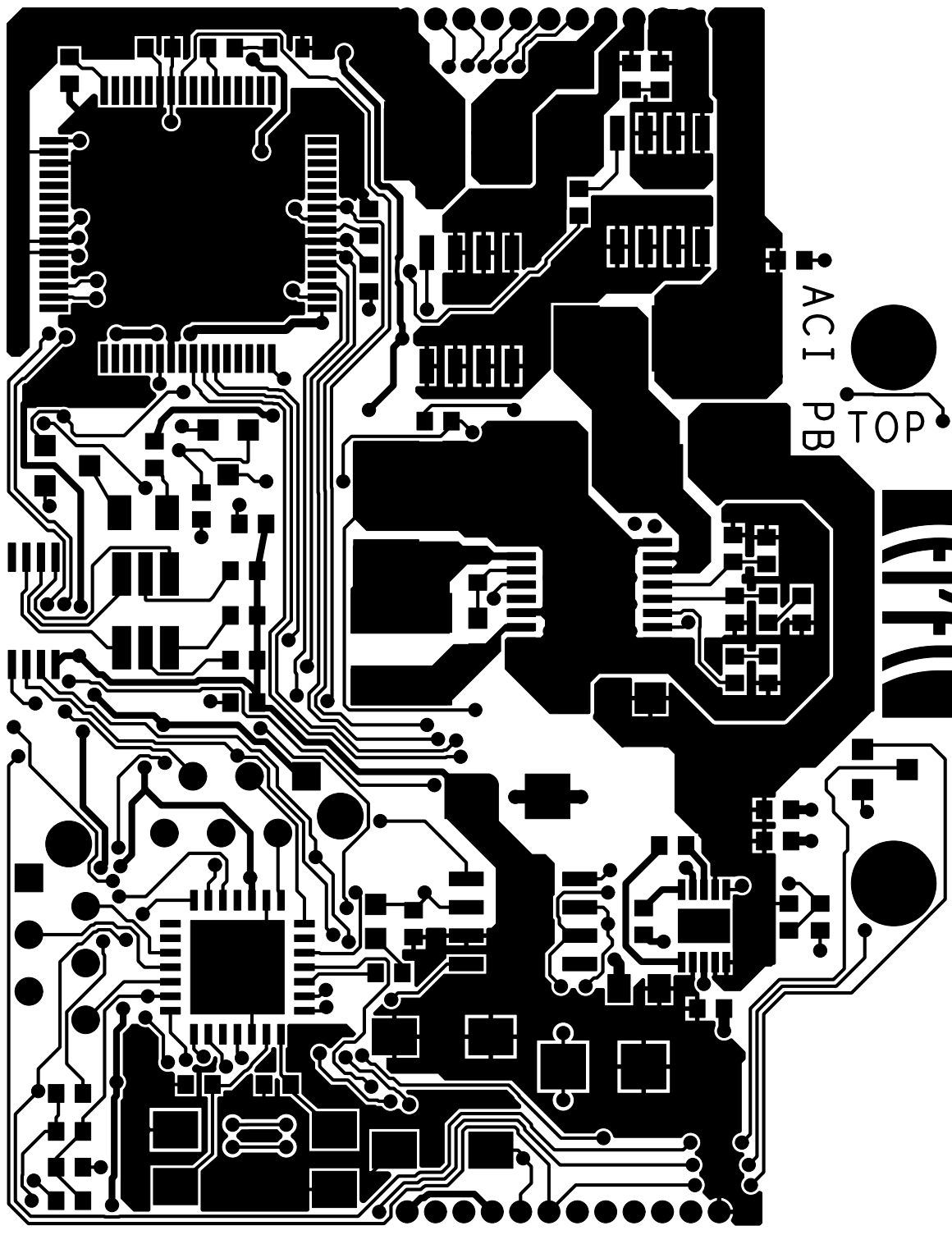


DRILL CHART		
ALL UNITS ARE IN MILLIMETERS		
FIGURE	SIZE	QTY
°	0.3	230
+	0.635	24
o	0.787	12
□	1.1	1
□	1.499	2
+	2.184	1
⊕	2.2	2



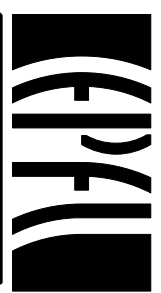






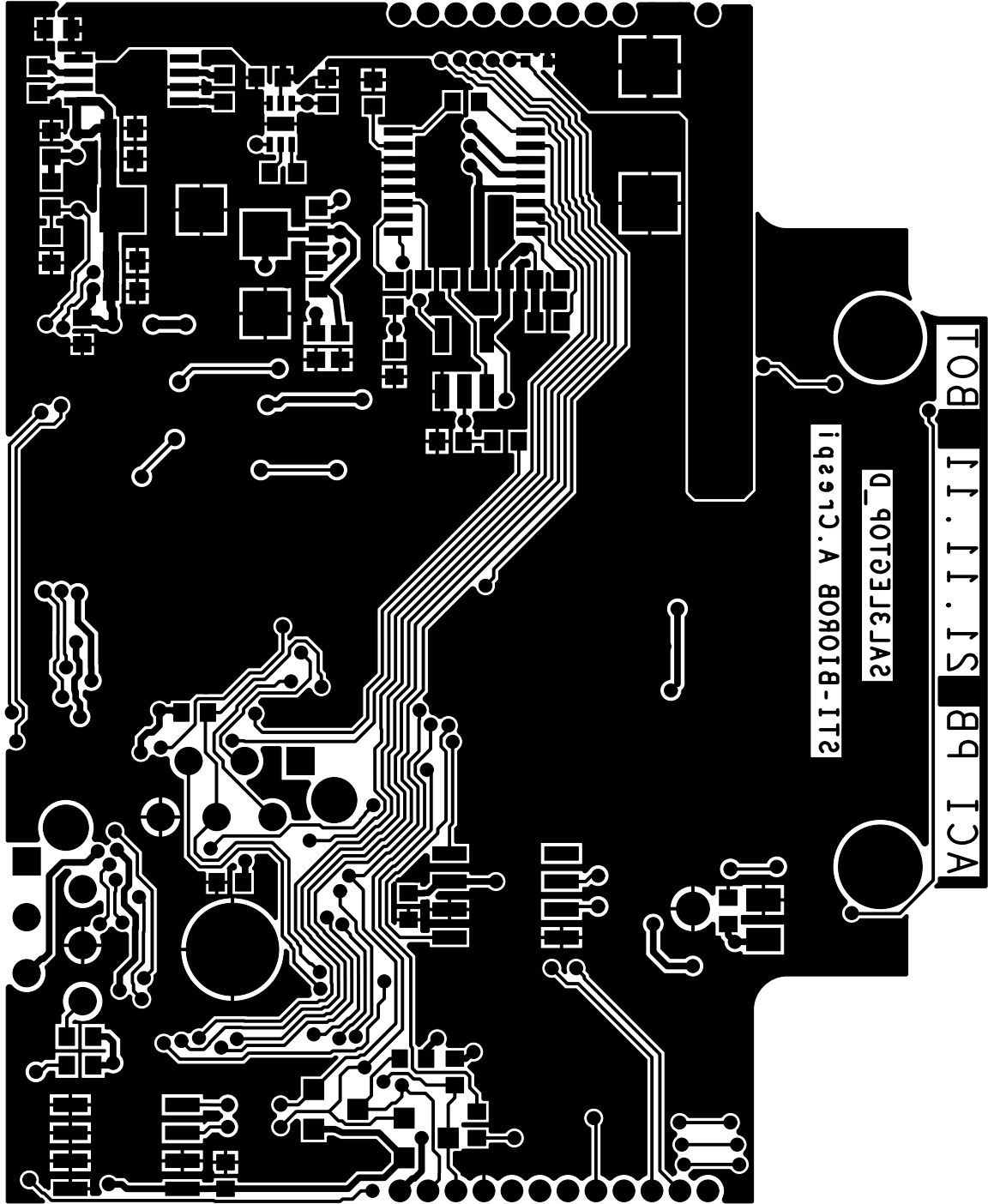
21.11.2011

ACI PB TOP

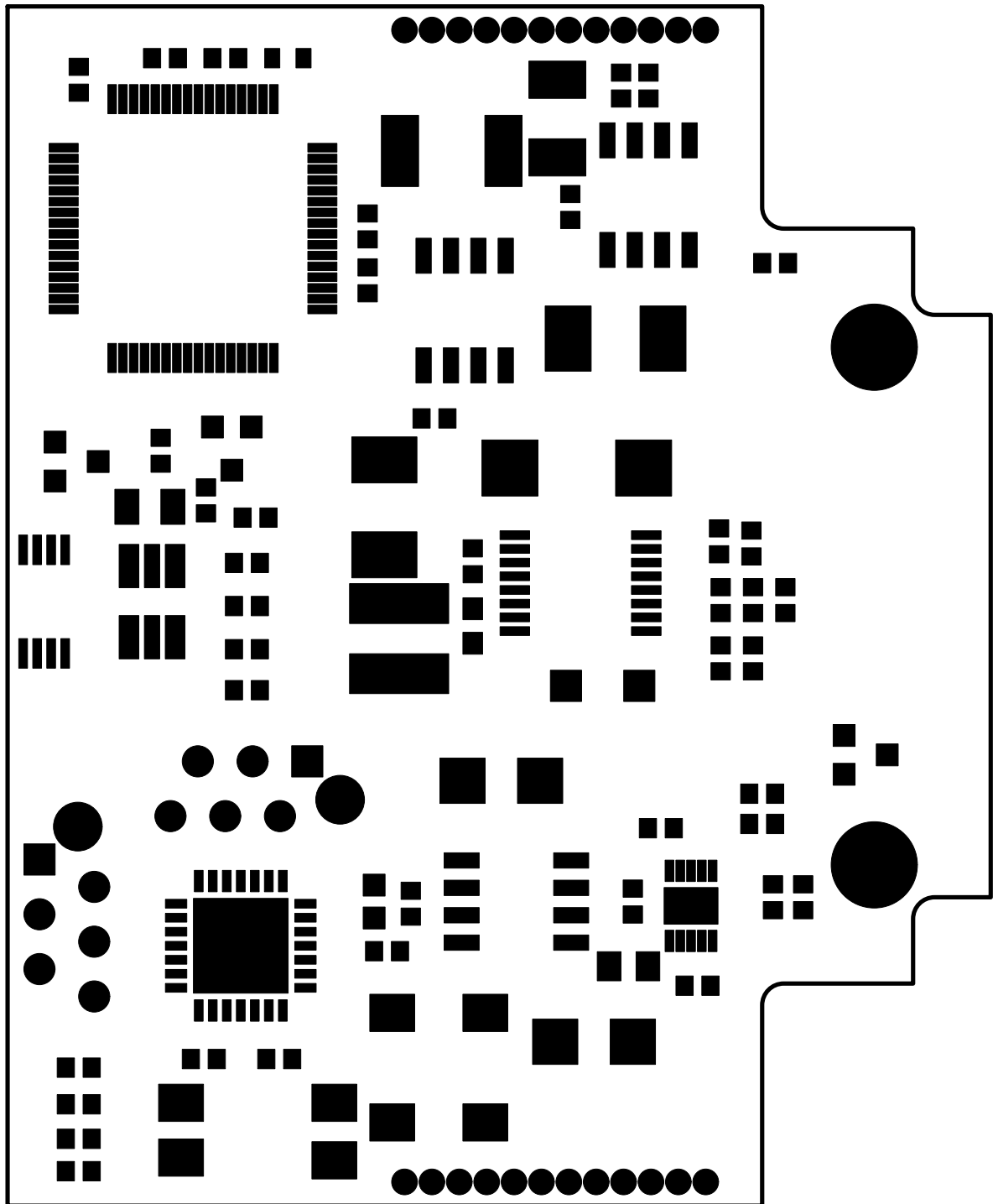


SAL3LEGTOP_D

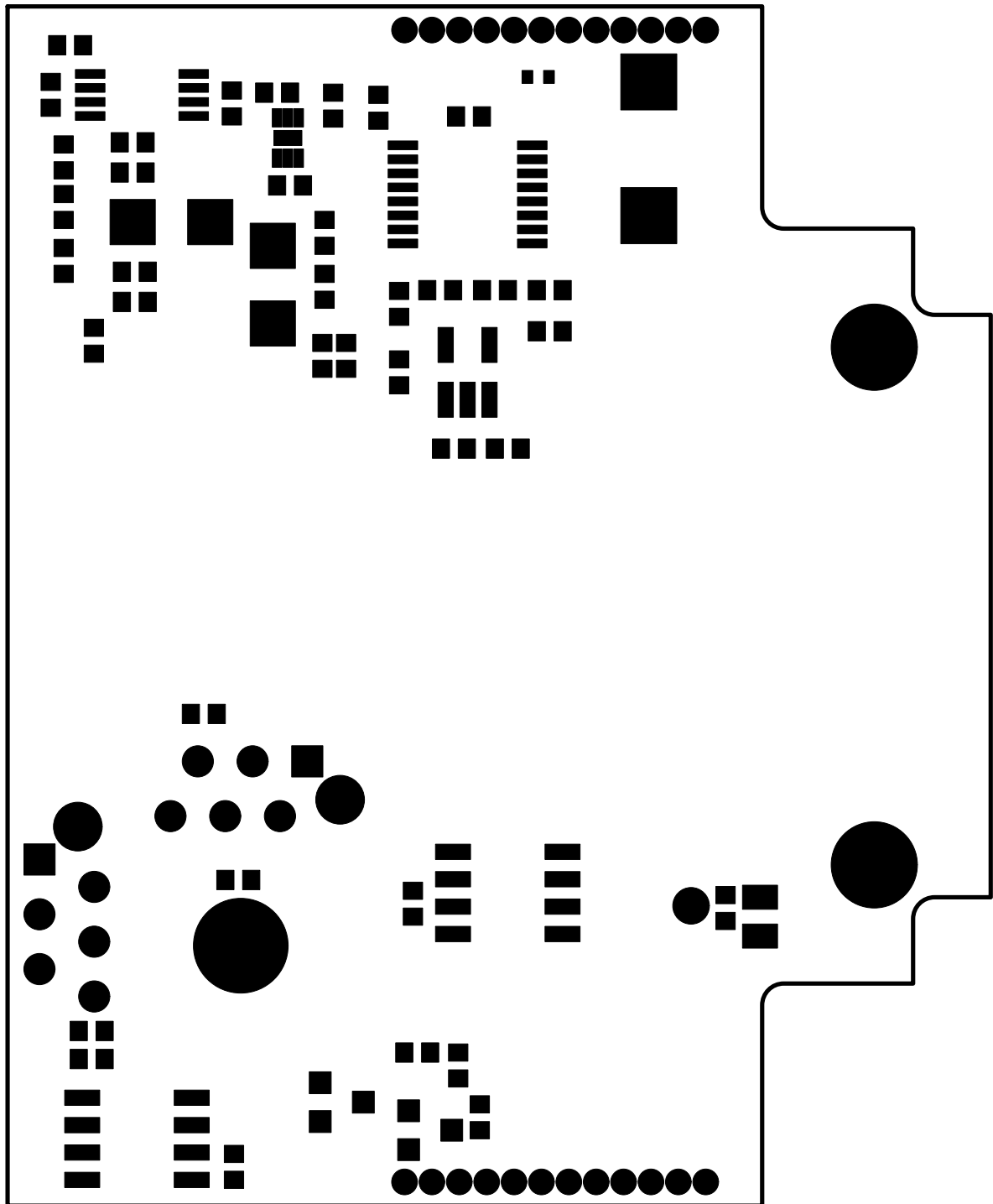
Gerber filename = top.art



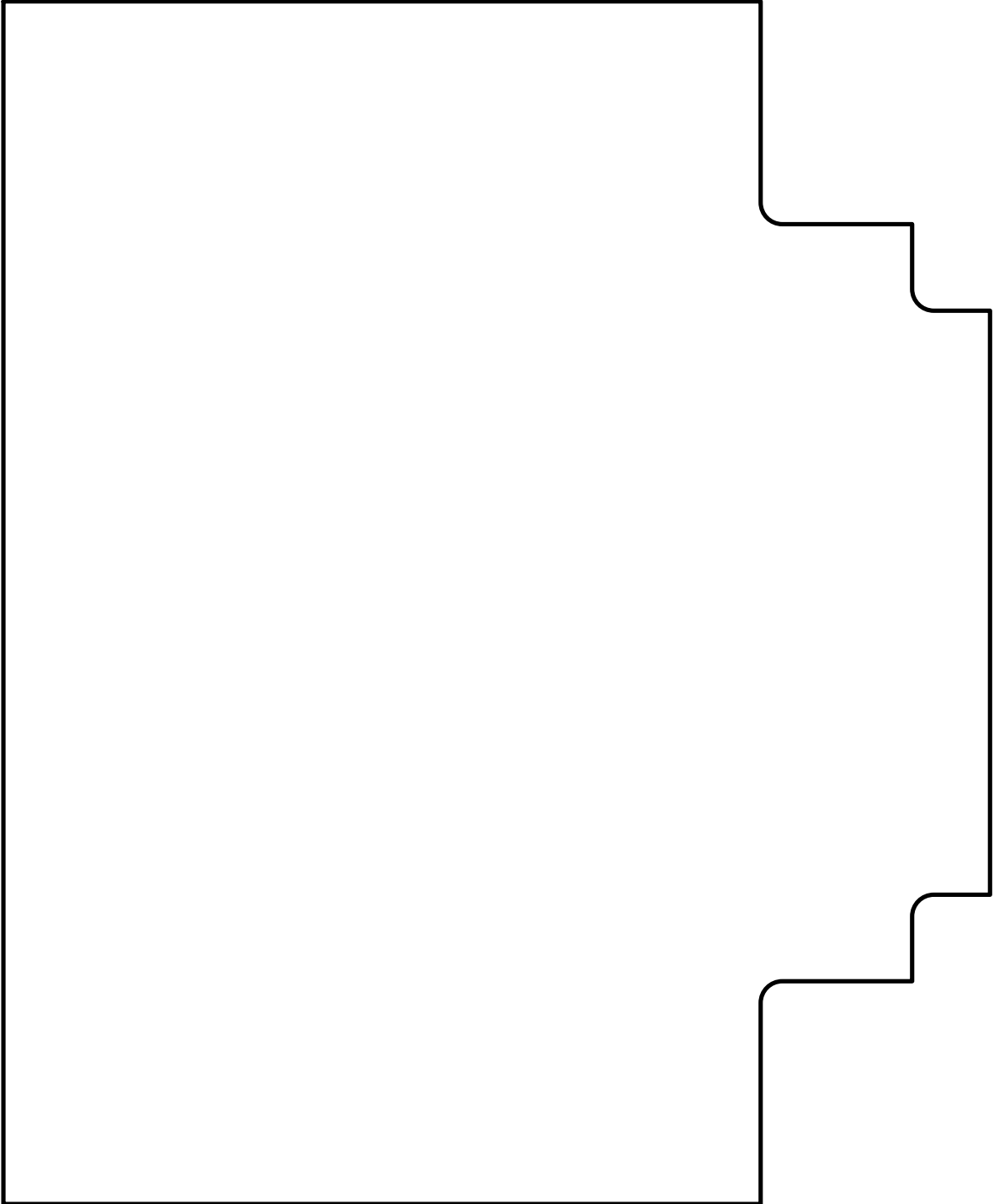
Gerber filename = bot.art



Gerber filename = mtop.art



Gerber filename = mbot.art



Gerber filename = cont.art

Component Report sal3legtop_d

sal3legtop_gloss.brd

24.11.2011 8:47:23

Ref Des	Device Type	Value	Package Type	x	y	ang	Mir	Remark
C1	0603-1-100N	100n	0603_G	-34.500	-3.900	90.000	NO	
C2	0603-1-100N	100n	0603_G	-22.995	14.645	90.000	YES	
C3	0603-1-1U	1u	0603_G	-11.025	0.275	180.000	NO	
C4	0603-1-100N	100n	0603_G	-27.440	10.835	180.000	YES	
C5	0603-1-100N	100n	0603_G	-24.200	22.700	270.000	YES	
C6	CP-35V-SMD-10U-10U	10u	CP_2917	-19.200	6.400	90.000	NO	
C7	0603-1-330N	330n	0603_G	-12.525	-2.425	0.000	NO	
C8	0603-1-220N	220n	0603_G	-24.025	2.075	180.000	NO	
C9	0603-1-100N	100n	0603_G	-11.100	2.900	0.000	NO	
C10	CP-6.3V-SMD-F-1-22U	22u	CP_1206	-18.000	-3.700	90.000	NO	
C11	0603-1-1N	1n	0603_G	-17.145	24.130	180.000	NO	
C12	0603-1-100N	100n	0603_G	-10.000	15.900	270.000	NO	
C13	0603-1-1N	1n	0603_G	-15.875	24.130	180.000	NO	
C14	0603-1-22P	22p	0603_G	-36.500	-21.000	90.000	NO	
C15	0603-1-22P	22p	0603_G	-33.000	-21.000	90.000	NO	
C16	0603-1-100N	100n	0603_G	-10.600	-10.100	270.000	NO	
C17	0603-1-100N	100n	0603_G	-35.100	-26.000	180.000	YES	
C18	0603-1-2U2	2u2	0603_G	-10.600	-8.700	270.000	NO	
C19	0603-1-2U2	2u2	0603_G	-16.600	-13.700	0.000	NO	
C20	0603-1-2U2	2u2	0603_G	-15.300	-10.300	270.000	NO	
C21	0805-1-10U	10u	0805_G	-16.800	-16.700	90.000	NO	
C22	0603-1-100N	100n	0603_G	-42.300	-24.700	90.000	NO	
C23	0603-1-100N	100n	0603_G	-13.600	-17.600	270.000	NO	
C24	CP-6.3V-SMD2--100U	100u	CP_1412	-18.400	-20.200	90.000	NO	
C25	0603-1-100N	100n	0603_G	-26.900	-13.800	0.000	NO	
C26	CP-6.3V-SMD2--100U	100u	CP_1412	-22.700	-8.100	270.000	NO	
C27	0603-1-100N	100n	0603_G	-39.800	21.500	90.000	YES	
C28	0603-1-10U	10u	0603_G	-39.800	20.100	90.000	YES	
C29	CP-4V-SMD-100U-100U	100u	CP_1412	-38.000	17.800	270.000	YES	
C30	0805-1-22U	22U	0805_G	-10.700	-14.400	0.000	YES	
C31	CP-6.3V-SMD--330U	330u	CP_2917	-15.860	21.200	180.000	YES	
C32	0603-1-100N	100n	0603_G	-12.300	-14.000	0.000	YES	
C33	0603-1-100N	100n	0603_G	-43.000	16.000	0.000	YES	
C34	1210-47U	47u	1210	-20.100	22.600	0.000	NO	
C35	0603-1-1U	1u	0603_G	-42.700	26.000	270.000	YES	
C36	0603-1-10U	10u	0603_G	-33.100	23.800	270.000	YES	
C37	0603-1-1U	1u	0603_G	-43.600	23.700	180.000	YES	
C38	0603-1-1U	1u	0603_G	-32.500	19.500	90.000	YES	
C39	0603-1-100N	100n	0603_G	-30.500	23.200	0.000	YES	
C40	0603-1-100N	100n	0603_G	-26.800	-13.800	180.000	YES	
C41	0603-1-4U7	4u7	0603_G	-34.900	-12.700	90.000	YES	
C42	0603-1-1U	1u	0603_G	-35.200	23.300	0.000	YES	
C43	CP-4V-SMD-100U-100U	100u	CP_1412	-33.300	14.900	180.000	YES	
C44	0603-1-100N	100n	0603_G	-41.600	12.300	0.000	YES	
C45	0603-1-100N	100n	0603_G	-31.000	11.600	0.000	YES	
C46	0603-1-100N	100n	0603_G	-39.700	14.100	90.000	YES	
C47	0603-1-100N	100n	0603_G	-43.000	20.800	180.000	YES	
C48	0603-1-100N	100n	0603_G	-29.900	11.600	0.000	YES	
C49	0603-1-100N	100n	0603_G	-28.900	15.100	0.000	NO	
C50	0603-1-100P	100p	0603_G	-23.700	-23.700	0.000	YES	
D1	LED-LATB_G66B		LED3COL	-38.900	0.205	0.000	NO	
D2	SS24	SS24	DO214AA	-17.400	12.400	90.000	NO	
D3	SS24	SS24	DO214AA	-28.125	4.575	180.000	NO	
D4	MCL4148-MCL4148	MCL4148	MICROMELF	-24.025	-0.925	0.000	NO	
D5	HSMR-C150	HSMR-C150	SMDLED	-39.000	4.600	90.000	NO	
D6	PG1101H	PG1101C	SMDLED_MINI	-28.600	-13.700	0.000	NO	
D7	TLMG1100	TLMG1100	SMDLED_0603	-32.600	25.400	270.000	NO	
J1	CO12-SIL12_50		SIL12_50	-13.220	-26.700	180.000	NO	

Component Report sal3legtop_d

sal3legtop_gloss.brd

24.11.2011 8:47:23

Ref Des	Device Type	Value	Package Type	x	y	ang	Mir	Remark
J2	CO12-SIL12_50		SIL12_50	-13.220	26.700	180.000	NO	
J3	CO6-MM6		MM6	-44.120	-11.750	270.000	NO	
J4	CO6-MM6		MM6	-31.700	-7.200	180.000	NO	
L1	L-SELF_WE_PD2-10U	10u	SELF_WE_PD2	-27.440	-1.510	0.000	NO	
R1	R-0603_G-300	300	0603_G	-9.525	0.275	180.000	NO	
R2	R-0603_G-4K3	4k3	0603_G	-12.525	0.275	180.000	NO	
R3	R-0603_G-150	150	0603_G	-27.440	14.010	180.000	YES	
R4	R-0603_G-1K	1k	0603_G	-20.455	14.645	90.000	YES	
R5	R-0603_G-4K7	4k7	0603_G	-28.400	23.100	0.000	YES	
R6	R-0603_G-1K	1k	0603_G	-11.025	-2.425	0.000	NO	
R7	R-1812-5M	5m	1812	-25.000	21.100	90.000	NO	
R8	R-0603_G-150	150	0603_G	-34.500	0.000	90.000	NO	
R9	R-0603_G-150	150	0603_G	-20.455	12.740	270.000	YES	
R10	R-0603_G-1K	1k	0603_G	-19.500	18.500	180.000	NO	
R11	R-0603_G-1K	1k	0603_G	-25.535	14.645	90.000	YES	
R12	R-0603_G-68	68	0603_G	-34.500	2.000	90.000	NO	
R13	R-0603_G-1M	1M	0603_G	-22.400	7.300	270.000	YES	
R14	R-0603_G-10M	10M	0603_G	-24.900	7.300	90.000	YES	
R15	R-0603_G-33K	33k	0603_G	-12.600	3.000	0.000	NO	
R16	R-0603_G-68	68	0603_G	-34.500	-2.000	90.000	NO	
R17	R-0603_G-33	33	0603_G	-38.500	7.200	180.000	NO	
R18	R-0603_G-47K	47k	0603_G	-41.700	-19.700	270.000	YES	
R19	R-0603_G-300K	300k	0603_G	-10.100	-13.500	180.000	NO	
R20	R-0603_G-100K	100k	0603_G	-8.700	-13.500	180.000	NO	
R21	R-0603_G-47K	47k	0603_G	-41.700	-21.000	90.000	YES	
R22	R-0603_G-82K	82k	0603_G	-42.300	-23.100	90.000	NO	
R23	R-0603_G-8K2	8k2	0603_G	-42.300	-26.200	90.000	NO	
R24	R-0603_G-180	180	0603_G	-28.000	-16.000	90.000	NO	
R25	R-0603_G-10M	10M	0603_G	-25.800	8.700	90.000	NO	
R26	R-0603_G-22K	22k	0603_G	-43.000	18.500	180.000	YES	
R27	R-0603_G-180	180	0603_G	-35.500	25.400	270.000	NO	
R28	R-0603_G-47K	47k	0603_G	-38.300	25.400	270.000	NO	
R29	R-0603_G-1K	1k	0603_G	-26.600	-20.700	270.000	YES	
R30	R-0603_G-1K	1k	0603_G	-24.700	-21.300	0.000	YES	
R31	R-0603_G-47K	47k	0603_G	-39.700	15.500	270.000	YES	
R32	R-0603_G-47K	47k	0603_G	-42.300	-21.400	90.000	NO	
R33	R-0603_G-47K	47k	0603_G	-34.100	4.100	90.000	NO	
R34	R-0603_G-47K	47k	0603_G	-42.300	24.400	180.000	NO	
R35	R-0603_G-47K	47k	0603_G	-28.900	17.600	0.000	NO	
R36	R-0603_G-1K	1k	0603_G	-30.900	17.300	0.000	YES	
R37	R-0603_G-1K	1k	0603_G	-30.900	14.800	0.000	YES	
R38	R-0402-0	0	0402	-20.990	24.530	270.000	YES	
R39	R-0603_G-100K	100k	0603_G	-36.400	4.900	180.000	NO	
R40	R-0603_G-22K	22k	0603_G	-36.500	-5.000	270.000	YES	
T1	IRF7410	IRF7410	SO8	-15.875	19.050	270.000	NO	
T2	IRF7410	IRF7410	SO8	-24.400	13.700	270.000	NO	
T3	BC847	BC847	SOT23	-42.400	6.700	0.000	NO	
T4	BC847	BC847	SOT23	-5.800	-6.900	0.000	NO	
T5	BC847	BC847	SOT23	-35.200	7.300	270.000	NO	
T6	BSS123-1	BSS138	SOT23_2	-26.000	-24.300	180.000	YES	
T7	BSS123-1	BSS138	SOT23_2	-30.100	-23.000	180.000	YES	
U1	PIC18F2580ML		QFN28_065MM_GND	-34.785	-15.750	90.000	NO	
U2	LTC3203EDD		TDFN3X3_11	-13.900	-13.900	90.000	NO	
U3	MCP2551-I/SN		SO8	-22.000	-13.700	0.000	NO	
U4	LPC2129FBD64		STQFP64	-37.000	17.500	90.000	NO	
U5	MCP2551-I/SN		SO8	-22.400	-13.300	180.000	YES	
U6	PCA9633DP1		MSO8	-43.900	0.205	270.000	NO	
U7	DS2764BE		TSSOP16	-24.265	19.090	180.000	YES	

Component Report sal3legtop_d

sal3legtop_gloss.brd

24.11.2011 8:47:23

Ref Des	Device Type	Value	Package Type	x	y	ang	Mir	Remark
U8	LT1571EGN-5		PSSOP16	-19.025	1.075	0.000	NO	
U9	NC7S32-VCC=VCCA		SOT23_5	-24.265	10.835	270.000	YES	
U10	LTC3240EDC-3.3		DFN2X2_6_GND	-32.600	21.700	90.000	YES	
U11	LTC1503MS8-1.8		MSO8	-39.370	23.690	180.000	YES	
U12	24AA08T-I/SN		SO8	-39.600	-24.700	180.000	YES	
V1	VIS_METAL-M2		VIS2	-5.400	12.000	0.000	NO	
V2	VIS_METAL-M2		VIS2	-5.400	-12.000	0.000	NO	
XT1	VX3E-2000	VX3E-2000	HXO4	-25.600	-21.400	0.000	NO	
XT2	XTALGND-0-20MHZ	20MHZ	NKS7	-34.000	-24.300	270.000	NO	

Total Component count 125



BOM Report sal3legtop_d

sal3legtop_gloss.brd

24.11.2011 8:47:23

Device	Package	Value	Nb	Reference Designators					Remark
0603-1-100N	0603_G	100n	22	C1	C2	C4	C5	C9	
				C12	C16	C17	C22	C23	
				C25	C27	C32	C33	C39	
				C40	C44	C45	C46	C47	
				C48	C49				
0603-1-100P	0603_G	100p	1	C50					
0603-1-10U	0603_G	10u	2	C28	C36				
0603-1-1N	0603_G	1n	2	C11	C13				
0603-1-1U	0603_G	1u	5	C3	C35	C37	C38	C42	
0603-1-220N	0603_G	220n	1	C8					
0603-1-22P	0603_G	22p	2	C14	C15				
0603-1-2U2	0603_G	2u2	3	C18	C19	C20			
0603-1-330N	0603_G	330n	1	C7					
0603-1-4U7	0603_G	4u7	1	C41					
0805-1-10U	0805_G	10u	1	C21					
0805-1-22U	0805_G	22U	1	C30					
1210-47U	1210	47u	1	C34					
24AA08T-I/SN	SO8		1	U12					
BC847	SOT23	BC847	3	T3	T4	T5			
BSS123-1	SOT23_2	BSS138	2	T6	T7				
CO12-SIL12_50	SIL12_50		2	J1	J2				
CO6-MM6	MM6		2	J3	J4				
CP-35V-SMD-10U-10U	CP_2917	10u	1	C6					
CP-4V-SMD-100U-100U	CP_1412	100u	2	C29	C43				
CP-6.3V-SMD-F-1-22U	CP_1206	22u	1	C10					
CP-6.3V-SMD--330U	CP_2917	330u	1	C31					
CP-6.3V-SMD2--100U	CP_1412	100u	2	C24	C26				
DS2764BE	TSSOP16		1	U7					
HSMR-C150	SMDLED	HSMR-C150	1	D5					
IRF7410	SO8	IRF7410	2	T1	T2				
L-SELF_WE_PD2-10U	SELF_WE_PD2	10u	1	L1					
LED-LATB_G66B	LED3COL		1	D1					
LPC2129FBD64	STQFP64		1	U4					
LT1571EGN-5	PSSOP16		1	U8					
LTC1503MS8-1.8	MSO8		1	U11					
LTC3203EDD	TDFN3X3_11		1	U2					
LTC3240EDC-3.3	DFN2X2_6_GND		1	U10					
MCL4148-MCL4148	MICROMELF	MCL4148	1	D4					
MCP2551-I/SN	SO8		2	U3	U5				
NC7S32-VCC=VCCA	SOT23_5		1	U9					
PCA9633DP1	MSO8		1	U6					
PG1101H	SMDLED_MINI	PG1101C	1	D6					
PIC18F2580ML	QFN28_065MM_GND		1	U1					
R-0402-0	0402	0	1	R38					
R-0603_G-100K	0603_G	100k	2	R20	R39				
R-0603_G-10M	0603_G	10M	2	R14	R25				
R-0603_G-150	0603_G	150	3	R3	R8	R9			
R-0603_G-180	0603_G	180	2	R24	R27				
R-0603_G-1K	0603_G	1k	8	R4	R6	R10	R11	R29	
				R30	R36	R37			
R-0603_G-1M	0603_G	1M	1	R13					
R-0603_G-22K	0603_G	22k	2	R26	R40				
R-0603_G-300	0603_G	300	1	R1					
R-0603_G-300K	0603_G	300k	1	R19					
R-0603_G-33	0603_G	33	1	R17					
R-0603_G-33K	0603_G	33k	1	R15					
R-0603_G-47K	0603_G	47k	8	R18	R21	R28	R31	R32	
				R33	R34	R35			

BOM Report sal3legtop_d

sal3legtop_gloss.brd

24.11.2011 8:47:23

Device	Package	Value	Nb	Reference Designators	Remark
R-0603_G-4K3	0603_G	4k3	1	R2	
R-0603_G-4K7	0603_G	4k7	1	R5	
R-0603_G-68	0603_G	68	2	R12 R16	
R-0603_G-82K	0603_G	82k	1	R22	
R-0603_G-8K2	0603_G	8k2	1	R23	
R-1812-5M	1812	5m	1	R7	
SS24	DO214AA	SS24	2	D2 D3	
TLMG1100	SMDLED_0603	TLMG1100	1	D7	
VIS_METAL-M2	VIS2		2	V1 V2	
VX3E-2000	HXO4	VX3E-2000	1	XT1	
XTALGND-0-20MHZ	NKS7	20MHZ	1	XT2	

Total Different Devices Count 64; Total Component Count 125

Power Pins Report sal3legtop_d

sal3legtop_gloss.brd

24.11.2011 8:47:23

Ref Des	Device	Name	Power Pins						Remark
D2	SS24	VCCE	2						
D3	SS24	GND	2						
D6	PG1101H	GND	1						
D7	TLMG1100	GND	1						
J1	CO12-SIL12_50	GND	9	12					
		VCC	1						
J2	CO12-SIL12_50	GND	12						
		GNDA	5						
		VCCA	4						
		VCCB	2	3					
		VCCE	1						
J3	CO6-MM6	GND	4						
		VCC	5						
J4	CO6-MM6	GND	6						
		V33	1						
T1	IRF7410	VCCB	1	2	3				
T2	IRF7410	VCCA	1	2	3				
T3	BC847	GND	1						
T4	BC847	GND	1						
T5	BC847	GND	1						
T6	BSS123-1	V33	1						
T7	BSS123-1	V33	1						
U1	PIC18F2580ML	GND	5	16	29				
		V33	17						
U2	LTC3203EDD	GND	9	11					
		VCC	2						
		VCCB	4	5	7				
U3	MCP2551-I/SN	GND	2	8					
		VCC	3						
U4	LPC2129FBD64	GND	6	18	25	42	50	58	59
		V1_8	17	49	63				
		V33	7	23	43	51			
U5	MCP2551-I/SN	GND	2	8					
		VCC	3						
U6	PCA9633DP1	GND	5						
		VCC	8						
U7	DS2764BE	GND	4	5	6				
		GNDA	11	12	13				
U8	LT1571EGN-5	UNNAMED_1_DS2764EP_109P_VDD	1	6	8	9	16		
		GND	1	6	8	9	16		
U9	NC7S32-VCC=VCCA	VCCB	10						
		GND	3						
U10	LTC3240EDC-3.3	VCCA	5						
		GND	1	7					
U11	LTC1503MS8-1.8	V33	3						
		VCCB	2	6					
		GND	7						
U12	24AA08T-I/SN	V1_8	1						
		VCCB	4						
		GND	1	2	3	4	7		
XT1	VX3E-2000	V33	8						
		GND	2						
XT2	XTALGND-0-20MHZ	VCC	1	4					
		GND	2	4					

Total Different Devices Count 29; Total Pins Count 94

Single Node Nets Report sal3legtop_d

sal3legtop_gloss.brd

24.11.2011 8:47:23

Netname	Node	Device	Remark
BUS_C	J1.4	CO12-SIL12_50	

Total Single Node Nets Count 1