

PUSHME

SAMLAB S[^].Weber

Phone: 41 32 7205520

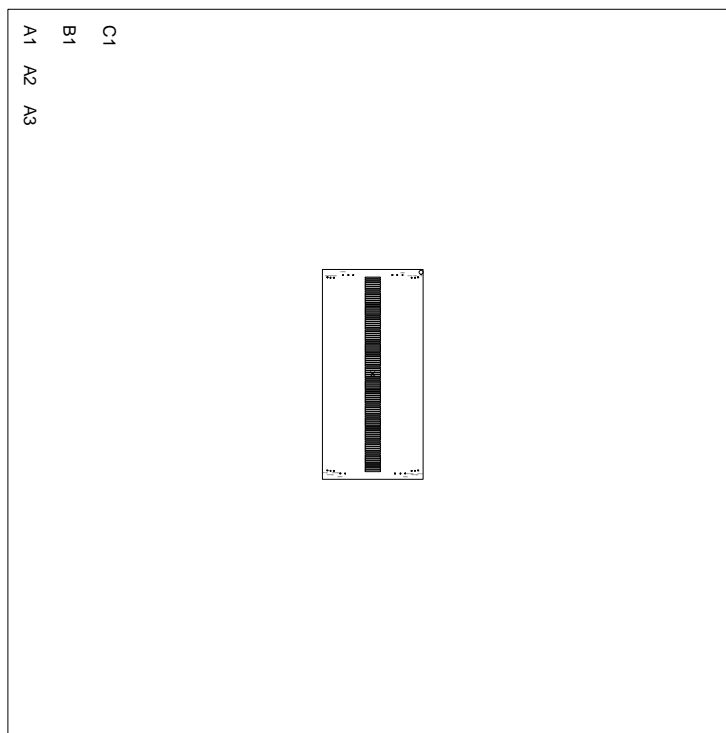
Mon Jul 6 11:48:28 MET DST 2009

MFG_DATE: Undefined

QUANTITY: 0

SOLDERMASK: mtop mbot

MATERIAL: FR4 : 0.8 mm



CONTENTS	PAGE
Root Schema pushme	2 - 3
Xref pushme	4 - 5
Bond_grp_a1w_1	6
Bond_grp_a1w_2	7
Bond_grp_a1w_3	8
Bond_grp_a1w_4	9
Bond_grp_a1w_5	10
Bond_grp_b0w_1	11
Bond_grp_b0w_2	12
Bond_grp_b0w_3	13
Bond_grp_b0w_4	14
Bond_grp_b0w_5	15
Bonding	16
Drill	17

CONTENTS	PAGE
Etch	18
Outline_Top	19
Gerber_mtop	20
Gerber_top	21
Gerber_bot	22
Gerber_mbot	23
Gerber_cont	24
Component Report	25
BOM Report	26
NC-Pins Report	27
Power-Pins Report	28
Single Node Nets	29

U2

A<1>	TL1	Tilt/Ampl Left	B_0_1_WIDE	TR1	A<1>
A<2>	TL2	Pitch/Phase Right	Up	TR2	B<2>
A<3>	TL3	Pitch/Phase Left	B_0_1_WIDE	PR2	B<2>
A<4>	TL4	Tilt/Ampl Right	Up	TR2	B<2>
A<5>	TL5	Pitch/Phase Right	B_0_1_WIDE	PR2	B<2>
A<6>	TL6	Tilt/Ampl Left	B_0_1_WIDE	TR4	B<4>
A<7>	TL7	Pitch/Phase Left	Up	TR4	B<4>
A<8>	TL8	Tilt/Ampl Right	B_0_1_WIDE	TR5	A<5>
A<9>	TL9	Pitch/Phase Right	B_0_1_WIDE	PR5	B<5>
A<10>	TL10	Tilt/Ampl Left	B_0_1_WIDE	TR6	A<6>
A<11>	TL11	Pitch/Phase Left	Up	TR6	A<6>
A<12>	TL12	Tilt/Ampl Right	B_0_1_WIDE	TR7	A<7>
A<13>	TL13	Pitch/Phase Right	B_0_1_WIDE	PR7	B<7>
A<14>	TL14	Tilt/Ampl Left	B_0_1_WIDE	TR8	A<8>
A<15>	TL15	Pitch/Phase Left	Up	TR8	A<8>
A<16>	TL16	Tilt/Ampl Right	B_0_1_WIDE	TR9	A<9>
A<17>	TL17	Pitch/Phase Right	B_0_1_WIDE	PR9	B<9>
A<18>	TL18	Tilt/Ampl Left	B_0_1_WIDE	TR10	A<10>
A<19>	TL19	Pitch/Phase Left	Up	TR10	A<10>
A<20>	TL20	Tilt/Ampl Right	B_0_1_WIDE	TR11	A<11>
A<21>	TL21	Pitch/Phase Right	B_0_1_WIDE	PR11	B<11>
A<22>	TL22	Tilt/Ampl Left	B_0_1_WIDE	TR12	A<12>
A<23>	TL23	Pitch/Phase Left	Up	TR12	A<12>
A<24>	TL24	Tilt/Ampl Right	B_0_1_WIDE	TR13	A<13>
A<25>	TL25	Pitch/Phase Right	B_0_1_WIDE	PR13	B<13>
A<26>	TL26	Tilt/Ampl Left	B_0_1_WIDE	TR14	A<14>
A<27>	TL27	Pitch/Phase Left	Up	TR14	A<14>
A<28>	TL28	Tilt/Ampl Right	B_0_1_WIDE	TR15	A<15>
A<29>	TL29	Pitch/Phase Right	B_0_1_WIDE	PR15	B<15>
A<30>	TL30	Tilt/Ampl Left	B_0_1_WIDE	TR16	A<16>
A<31>	TL31	Pitch/Phase Left	Up	TR16	A<16>
A<32>	TL32	Tilt/Ampl Right	B_0_1_WIDE	TR17	A<17>
A<33>	TL33	Pitch/Phase Right	B_0_1_WIDE	PR17	B<17>
A<34>	TL34	Tilt/Ampl Left	B_0_1_WIDE	TR18	A<18>
A<35>	TL35	Pitch/Phase Left	Up	TR18	A<18>
A<36>	TL36	Tilt/Ampl Right	B_0_1_WIDE	TR19	A<19>
A<37>	TL37	Pitch/Phase Right	B_0_1_WIDE	PR19	B<19>
A<38>	TL38	Tilt/Ampl Left	B_0_1_WIDE	TR20	A<20>
A<39>	TL39	Pitch/Phase Left	Up	TR20	A<20>
A<40>	TL40	Tilt/Ampl Right	B_0_1_WIDE	TR21	A<21>
A<41>	TL41	Pitch/Phase Right	B_0_1_WIDE	PR21	B<21>
A<42>	TL42	Tilt/Ampl Left	B_0_1_WIDE	TR22	A<22>
A<43>	TL43	Pitch/Phase Left	Up	TR22	A<22>
A<44>	TL44	Tilt/Ampl Right	B_0_1_WIDE	TR23	A<23>
A<45>	TL45	Pitch/Phase Right	B_0_1_WIDE	PR23	B<23>
A<46>	TL46	Tilt/Ampl Left	B_0_1_WIDE	TR24	A<24>
A<47>	TL47	Pitch/Phase Left	Up	TR24	A<24>
A<48>	TL48	Tilt/Ampl Right	B_0_1_WIDE	TR25	A<25>
A<49>	TL49	Pitch/Phase Right	B_0_1_WIDE	PR25	B<25>
A<50>	TL50	Tilt/Ampl Left	B_0_1_WIDE	TR26	A<26>
A<51>	TL51	Pitch/Phase Left	Up	TR26	A<26>
A<52>	TL52	Tilt/Ampl Right	B_0_1_WIDE	TR27	A<27>
A<53>	TL53	Pitch/Phase Right	B_0_1_WIDE	PR27	B<27>
A<54>	TL54	Tilt/Ampl Left	B_0_1_WIDE	TR28	A<28>
A<55>	TL55	Pitch/Phase Left	Up	TR28	A<28>
A<56>	TL56	Tilt/Ampl Right	B_0_1_WIDE	TR29	A<29>
A<57>	TL57	Pitch/Phase Right	B_0_1_WIDE	PR29	B<29>
A<58>	TL58	Tilt/Ampl Left	B_0_1_WIDE	TR30	A<30>
A<59>	TL59	Pitch/Phase Left	Up	TR30	A<30>
A<60>	TL60	Tilt/Ampl Right	B_0_1_WIDE	TR31	A<31>
A<61>	TL61	Pitch/Phase Right	B_0_1_WIDE	PR31	B<31>
A<62>	TL62	Tilt/Ampl Left	B_0_1_WIDE	TR32	A<32>
A<63>	TL63	Pitch/Phase Left	Up	TR32	A<32>
A<64>	TL64	Tilt/Ampl Right	B_0_1_WIDE	TR33	A<33>
A<65>	TL65	Pitch/Phase Right	B_0_1_WIDE	PR33	B<33>
A<66>	TL66	Tilt/Ampl Left	B_0_1_WIDE	TR34	A<34>
A<67>	TL67	Pitch/Phase Left	Up	TR34	A<34>
A<68>	TL68	Tilt/Ampl Right	B_0_1_WIDE	TR35	A<35>
A<69>	TL69	Pitch/Phase Right	B_0_1_WIDE	PR35	B<35>
A<70>	TL70	Tilt/Ampl Left	B_0_1_WIDE	TR36	A<36>
A<71>	TL71	Pitch/Phase Left	Up	TR36	A<36>
A<72>	TL72	Tilt/Ampl Right	B_0_1_WIDE	TR37	A<37>
A<73>	TL73	Pitch/Phase Right	B_0_1_WIDE	PR37	B<37>
A<74>	TL74	Tilt/Ampl Left	B_0_1_WIDE	TR38	A<38>
A<75>	TL75	Pitch/Phase Left	Up	TR38	A<38>
A<76>	TL76	Tilt/Ampl Right	B_0_1_WIDE	TR39	A<39>
A<77>	TL77	Pitch/Phase Right	B_0_1_WIDE	PR39	B<39>
A<78>	TL78	Tilt/Ampl Left	B_0_1_WIDE	TR40	A<40>
A<79>	TL79	Pitch/Phase Left	Up	TR40	A<40>
A<80>	TL80	Tilt/Ampl Right	B_0_1_WIDE	TR41	A<41>
A<81>	TL81	Pitch/Phase Right	B_0_1_WIDE	PR41	B<41>
A<82>	TL82	Tilt/Ampl Left	B_0_1_WIDE	TR42	A<42>
A<83>	TL83	Pitch/Phase Left	Up	TR42	A<42>
A<84>	TL84	Tilt/Ampl Right	B_0_1_WIDE	TR43	A<43>
A<85>	TL85	Pitch/Phase Right	B_0_1_WIDE	PR43	B<43>
A<86>	TL86	Tilt/Ampl Left	B_0_1_WIDE	TR44	A<44>
A<87>	TL87	Pitch/Phase Left	Up	TR44	A<44>
A<88>	TL88	Tilt/Ampl Right	B_0_1_WIDE	TR45	A<45>
A<89>	TL89	Pitch/Phase Right	B_0_1_WIDE	PR45	B<45>
A<90>	TL90	Tilt/Ampl Left	B_0_1_WIDE	TR45	A<45>
A<91>	TL91	Pitch/Phase Left	Up	TR45	A<45>

U2

A<46>	TL46	Tilt/Ampl Left	B_0_1_WIDE	TR46	A<46>
A<47>	TL47	Pitch/Phase Right	Up	TR46	B<46>
A<48>	TL48	Tilt/Ampl Right	B_0_1_WIDE	TR47	A<47>
A<49>	TL49	Pitch/Phase Left	Up	TR47	B<47>
A<50>	TL50	Tilt/Ampl Left	B_0_1_WIDE	TR48	A<48>
A<51>	TL51	Pitch/Phase Right	B_0_1_WIDE	PR48	B<48>
A<52>	TL52	Tilt/Ampl Right	B_0_1_WIDE	TR49	A<49>
A<53>	TL53	Pitch/Phase Left	Up	TR49	B<49>
A<54>	TL54	Tilt/Ampl Left	B_0_1_WIDE	TR50	A<50>
A<55>	TL55	Pitch/Phase Right	B_0_1_WIDE	PR50	B<50>
A<56>	TL56	Tilt/Ampl Right	B_0_1_WIDE	TR51	A<51>
A<57>	TL57	Pitch/Phase Left	Up	TR51	B<51>
A<58>	TL58	Tilt/Ampl Left	B_0_1_WIDE	TR52	A<52>
A<59>	TL59	Pitch/Phase Right	B_0_1_WIDE	PR52	B<52>
A<60>	TL60	Tilt/Ampl Right	B_0_1_WIDE	TR53	A<53>
A<61>	TL61	Pitch/Phase Left	Up	TR53	B<53>
A<62>	TL62	Tilt/Ampl Left	B_0_1_WIDE	TR54	A<54>
A<63>	TL63	Pitch/Phase Right	B_0_1_WIDE	PR54	B<54>
A<64>	TL64	Tilt/Ampl Right	B_0_1_WIDE	TR55	A<55>
A<65>	TL65	Pitch/Phase Left	Up	TR55	B<55>
A<66>	TL66	Tilt/Ampl Left	B_0_1_WIDE	TR56	A<56>
A<67>	TL67	Pitch/Phase Right	B_0_1_WIDE	PR56	B<56>
A<68>	TL68	Tilt/Ampl Right	B_0_1_WIDE	TR57	A<57>
A<69>	TL69	Pitch/Phase Left	Up	TR57	B<57>
A<70>	TL70	Tilt/Ampl Left	B_0_1_WIDE	TR58	A<58>
A<71>	TL71	Pitch/Phase Right	B_0_1_WIDE	PR58	B<58>
A<72>	TL72	Tilt/Ampl Right	B_0_1_WIDE	TR59	A<59>
A<73>	TL73	Pitch/Phase Left	Up	TR59	B<59>
A<74>	TL74	Tilt/Ampl Left	B_0_1_WIDE	TR60	A<60>
A<75>	TL75	Pitch/Phase Right	B_0_1_WIDE	PR60	B<60>
A<76>	TL76	Tilt/Ampl Right	B_0_1_WIDE	TR61	A<61>
A<77>	TL77	Pitch/Phase Left	Up	TR61	B<61>
A<78>	TL78	Tilt/Ampl Left	B_0_1_WIDE	TR62	A<62>
A<79>	TL79	Pitch/Phase Right	B_0_1_WIDE	PR62	B<62>
A<80>	TL80	Tilt/Ampl Right	B_0_1_WIDE	TR63	A<63>
A<81>	TL81	Pitch/Phase Left	Up	TR63	B<63>
A<82>	TL82	Tilt/Ampl Left	B_0_1_WIDE	TR64	A<64>
A<83>	TL83	Pitch/Phase Right	B_0_1_WIDE	PR64	B<64>
A<84>	TL84	Tilt/Ampl Right	B_0_1_WIDE	TR65	A<65>
A<85>	TL85	Pitch/Phase Left	Up	TR65	B<65>
A<86>	TL86	Tilt/Ampl Left	B_0_1_WIDE	TR66	A<66>
A<87>	TL87	Pitch/Phase Right	B_0_1_WIDE	PR66	B<66>
A<88>	TL88	Tilt/Ampl Right	B_0_1_WIDE	TR67	A<67>
A<89>	TL89	Pitch/Phase Left	Up	TR67	B<67>
A<90>	TL90	Tilt/Ampl Left	B_0_1_WIDE	TR68	A<68>
A<91>	TL91	Pitch/Phase Right	B_0_1_WIDE	PR68	B<68>
A<92>	TL92	Tilt/Ampl Right	B_0_1_WIDE	TR69	A<69>
A<93>	TL93	Pitch/Phase Left	Up	TR69	B<69>
A<94>	TL94	Tilt/Ampl Left	B_0_1_WIDE	TR70	A<70>
A<95>	TL95	Pitch/Phase Right	B_0_1_WIDE	PR70	B<70>
A<96>	TL96	Tilt/Ampl Right	B_0_1_WIDE	TR71	A<71>
A<97>	TL97	Pitch/Phase Left	Up	TR71	B<71>
A<98>	TL98	Tilt/Ampl Left	B_0_1_WIDE	TR72	A<72>
A<99>	TL99	Pitch/Phase Right	B_0_1_WIDE	PR72	B<72>
A<100>	TL100	Tilt/Ampl Right	B_0_1_WIDE	TR73	A<73>
A<101>	TL101	Pitch/Phase Left	Up	TR73	B<73>

Signal Page Ref PUSHME

pushme

Mon Jul 6 11:48:29 MET DST 2009

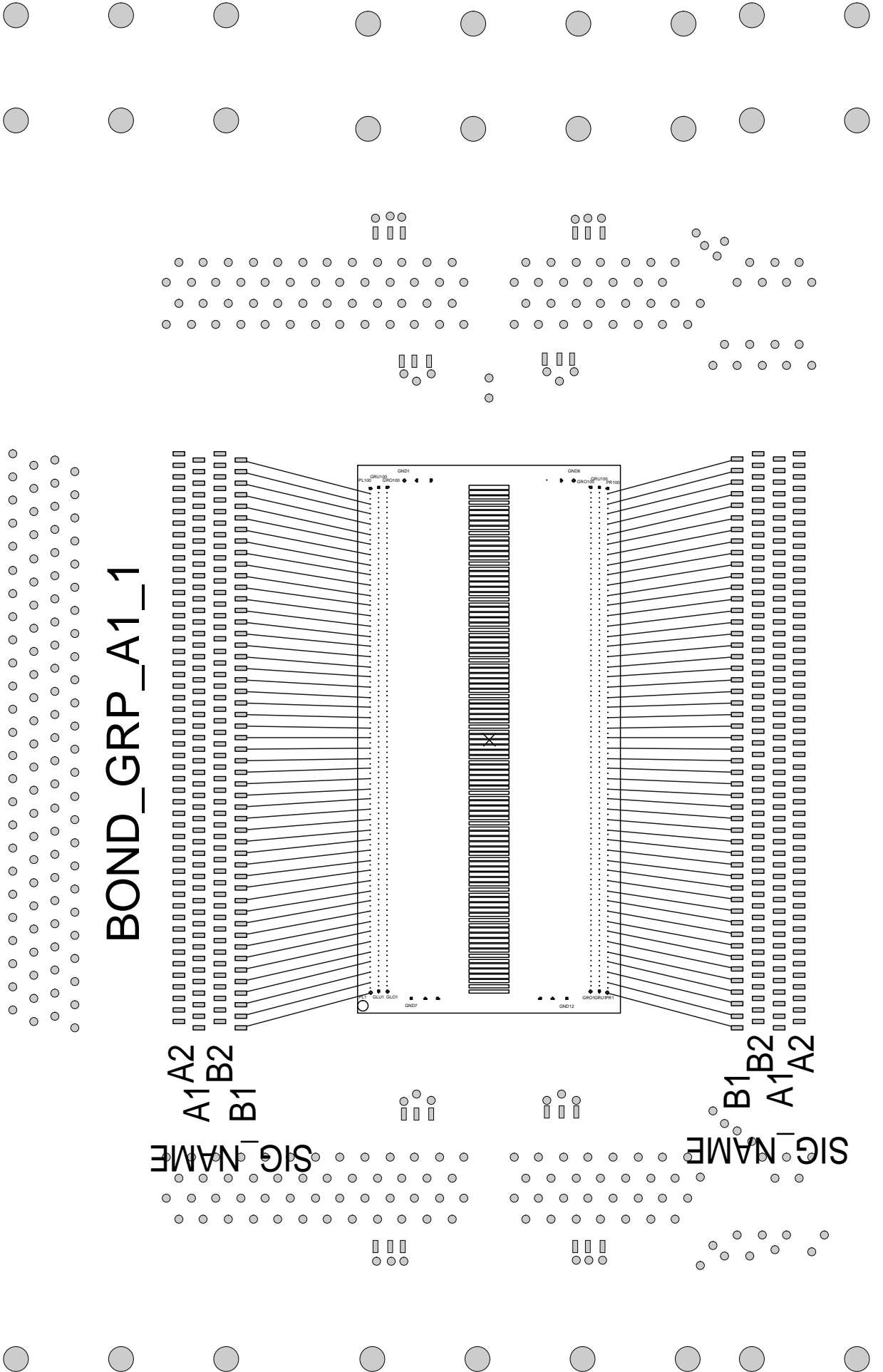
Ref Des	Pages	Ref Des	Pages
A<1>	1 1 2 2	A<59>	1 1 2 2
A<2>	1 1 2 2	A<60>	1 1 2 2
A<3>	1 1 2 2	A<61>	1 1 2 2
A<4>	1 1 2 2	A<62>	1 1 2 2
A<5>	1 1 2 2	A<63>	1 1 2 2
A<6>	1 1 2 2	A<64>	1 1 2 2
A<7>	1 1 2 2	A<65>	1 1 2 2
A<8>	1 1 2 2	A<66>	1 1 2 2
A<9>	1 1 2 2	A<67>	1 1 2 2
A<10>	1 1 2 2	A<68>	1 1 2 2
A<11>	1 1 2 2	A<69>	1 1 2 2
A<12>	1 1 2 2	A<70>	1 1 2 2
A<13>	1 1 2 2	A<71>	1 1 2 2
A<14>	1 1 2 2	A<72>	1 1 2 2
A<15>	1 1 2 2	A<73>	1 1 2 2
A<16>	1 1 2 2	A<74>	1 1 2 2
A<17>	1 1 2 2	A<75>	1 1 2 2
A<18>	1 1 2 2	A<76>	1 1 2 2
A<19>	1 1 2 2	A<77>	1 1 2 2
A<20>	1 1 2 2	A<78>	1 1 2 2
A<21>	1 1 2 2	A<79>	1 1 2 2
A<22>	1 1 2 2	A<80>	1 1 2 2
A<23>	1 1 2 2	A<81>	1 1 2 2
A<24>	1 1 2 2	A<82>	1 1 2 2
A<25>	1 1 2 2	A<83>	1 1 2 2
A<26>	1 1 2 2	A<84>	1 1 2 2
A<27>	1 1 2 2	A<85>	1 1 2 2
A<28>	1 1 2 2	A<86>	1 1 2 2
A<29>	1 1 2 2	A<87>	1 1 2 2
A<30>	1 1 2 2	A<88>	1 1 2 2
A<31>	1 1 2 2	A<89>	1 1 2 2
A<32>	1 1 2 2	A<90>	1 1 2 2
A<33>	1 1 2 2	A<91>	1 1 2 2
A<34>	1 1 2 2	A<92>	1 1 2 2
A<35>	1 1 2 2	A<93>	1 1 2 2
A<36>	1 1 2 2	A<94>	1 1 2 2
A<37>	1 1 2 2	A<95>	1 1 2 2
A<38>	1 1 2 2	A<96>	1 1 2 2
A<39>	1 1 2 2	A<97>	1 1 2 2
A<40>	1 1 2 2	A<98>	1 1 2 2
A<41>	1 1 2 2	A<99>	1 1 2 2
A<42>	1 1 2 2	A<100>	1 1 2 2
A<43>	1 1 2 2	B<1>	1 1 2 2
A<44>	1 1 2 2	B<2>	1 1 2 2
A<45>	1 1 2 2	B<3>	1 1 2 2
A<46>	1 1 2 2	B<4>	1 1 2 2
A<47>	1 1 2 2	B<5>	1 1 2 2
A<48>	1 1 2 2	B<6>	1 1 2 2
A<49>	1 1 2 2	B<7>	1 1 2 2
A<50>	1 1 2 2	B<8>	1 1 2 2
A<51>	1 1 2 2	B<9>	1 1 2 2
A<52>	1 1 2 2	B<10>	1 1 2 2
A<53>	1 1 2 2	B<11>	1 1 2 2
A<54>	1 1 2 2	B<12>	1 1 2 2
A<55>	1 1 2 2	B<13>	1 1 2 2
A<56>	1 1 2 2	B<14>	1 1 2 2
A<57>	1 1 2 2	B<15>	1 1 2 2
A<58>	1 1 2 2	B<16>	1 1 2 2

Signal Page Ref PUSHME

pushme

Mon Jul 6 11:48:29 MET DST 2009

Ref Des	Pages	Ref Des	Pages
B<17>	1 1 2 2	B<75>	1 1 2 2
B<18>	1 1 2 2	B<76>	1 1 2 2
B<19>	1 1 2 2	B<77>	1 1 2 2
B<20>	1 1 2 2	B<78>	1 1 2 2
B<21>	1 1 2 2	B<79>	1 1 2 2
B<22>	1 1 2 2	B<80>	1 1 2 2
B<23>	1 1 2 2	B<81>	1 1 2 2
B<24>	1 1 2 2	B<82>	1 1 2 2
B<25>	1 1 2 2	B<83>	1 1 2 2
B<26>	1 1 2 2	B<84>	1 1 2 2
B<27>	1 1 2 2	B<85>	1 1 2 2
B<28>	1 1 2 2	B<86>	1 1 2 2
B<29>	1 1 2 2	B<87>	1 1 2 2
B<30>	1 1 2 2	B<88>	1 1 2 2
B<31>	1 1 2 2	B<89>	1 1 2 2
B<32>	1 1 2 2	B<90>	1 1 2 2
B<33>	1 1 2 2	B<91>	1 1 2 2
B<34>	1 1 2 2	B<92>	1 1 2 2
B<35>	1 1 2 2	B<93>	1 1 2 2
B<36>	1 1 2 2	B<94>	1 1 2 2
B<37>	1 1 2 2	B<95>	1 1 2 2
B<38>	1 1 2 2	B<96>	1 1 2 2
B<39>	1 1 2 2	B<97>	1 1 2 2
B<40>	1 1 2 2	B<98>	1 1 2 2
B<41>	1 1 2 2	B<99>	1 1 2 2
B<42>	1 1 2 2	B<100>	1 1 2 2
B<43>	1 1 2 2		Total Signals count 200
B<44>	1 1 2 2		
B<45>	1 1 2 2		
B<46>	1 1 2 2		
B<47>	1 1 2 2		
B<48>	1 1 2 2		
B<49>	1 1 2 2		
B<50>	1 1 2 2		
B<51>	1 1 2 2		
B<52>	1 1 2 2		
B<53>	1 1 2 2		
B<54>	1 1 2 2		
B<55>	1 1 2 2		
B<56>	1 1 2 2		
B<57>	1 1 2 2		
B<58>	1 1 2 2		
B<59>	1 1 2 2		
B<60>	1 1 2 2		
B<61>	1 1 2 2		
B<62>	1 1 2 2		
B<63>	1 1 2 2		
B<64>	1 1 2 2		
B<65>	1 1 2 2		
B<66>	1 1 2 2		
B<67>	1 1 2 2		
B<68>	1 1 2 2		
B<69>	1 1 2 2		
B<70>	1 1 2 2		
B<71>	1 1 2 2		
B<72>	1 1 2 2		
B<73>	1 1 2 2		
B<74>	1 1 2 2		

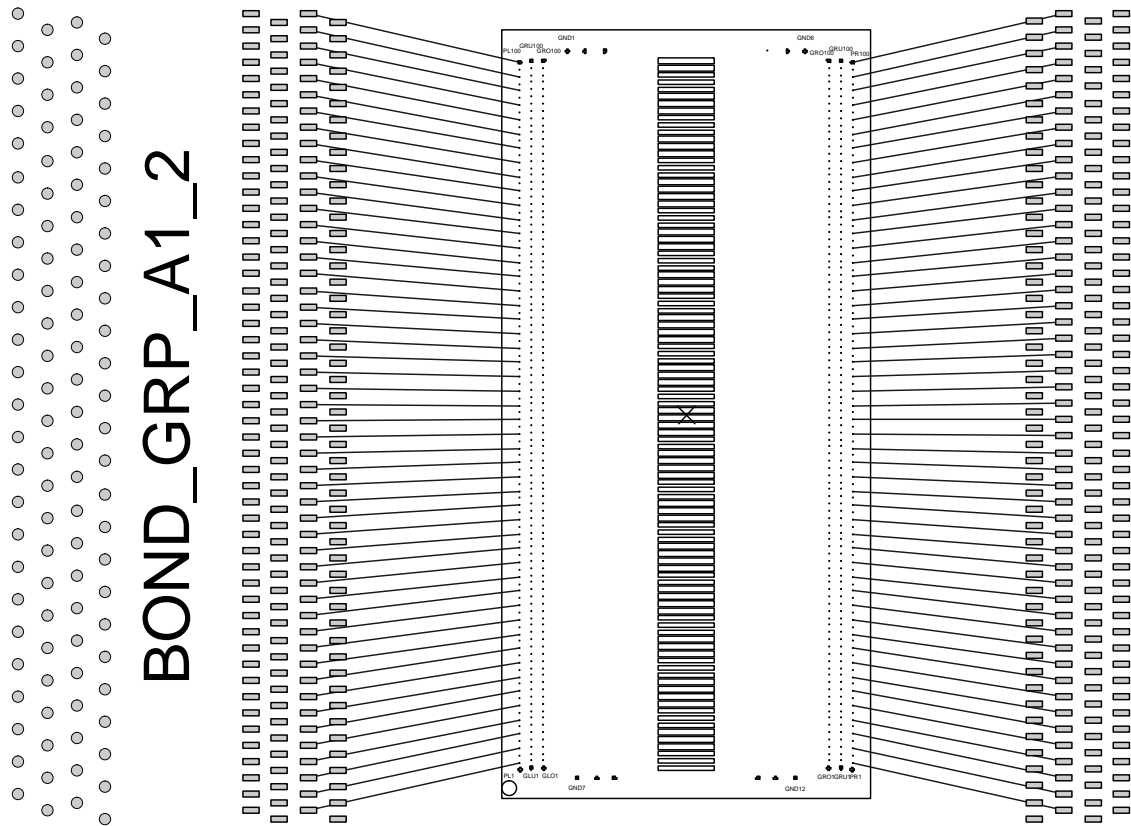


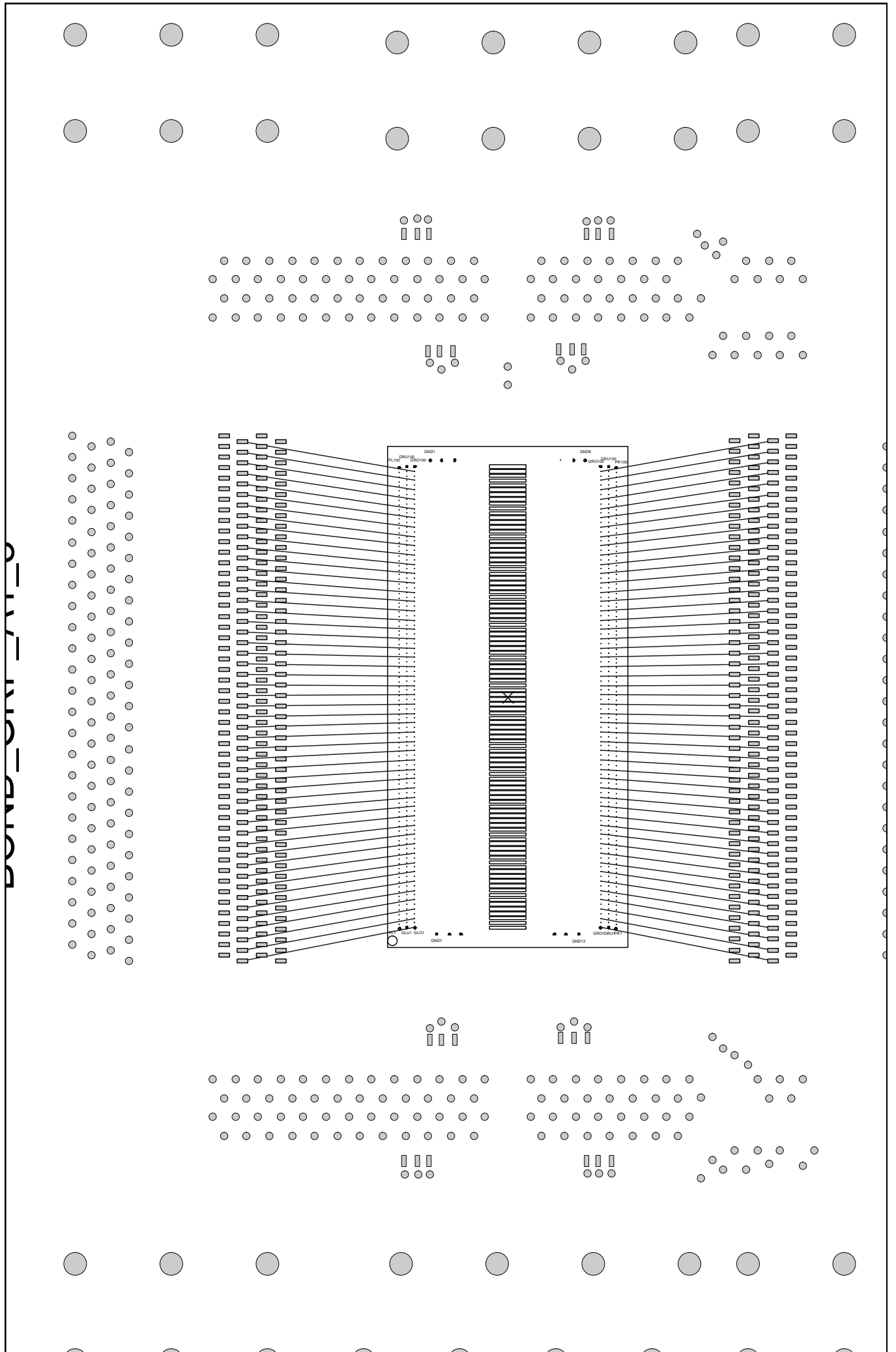
BOND_GRP_A1_1

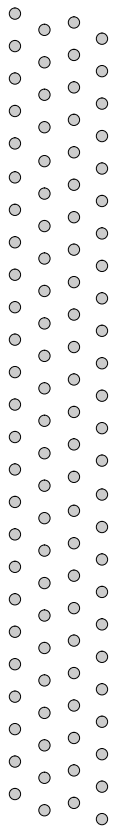
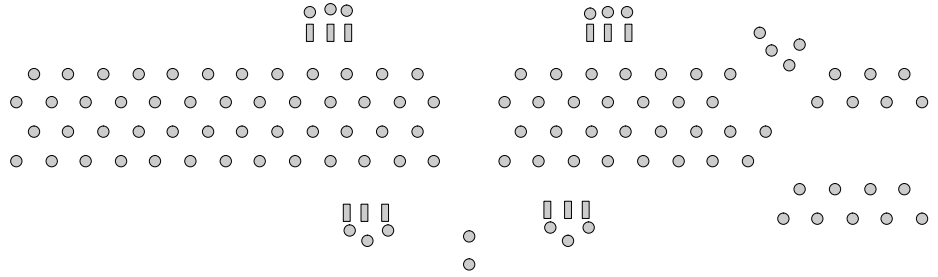
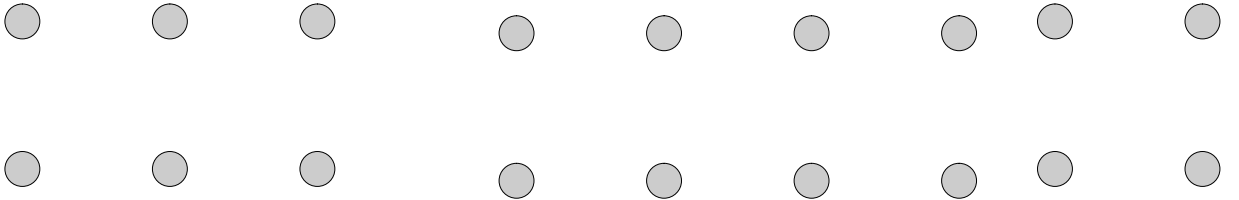
SIG_NAME
A1
B1
A2
B2

SIG_NAME
B1
A1
B2
A2

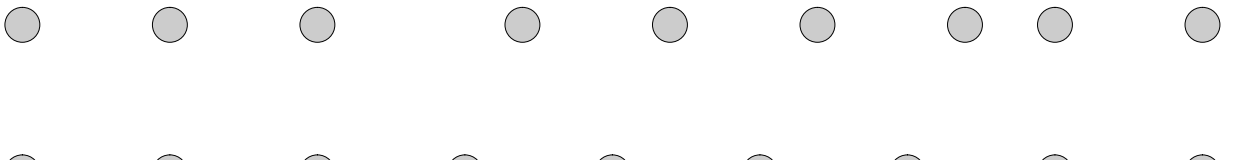
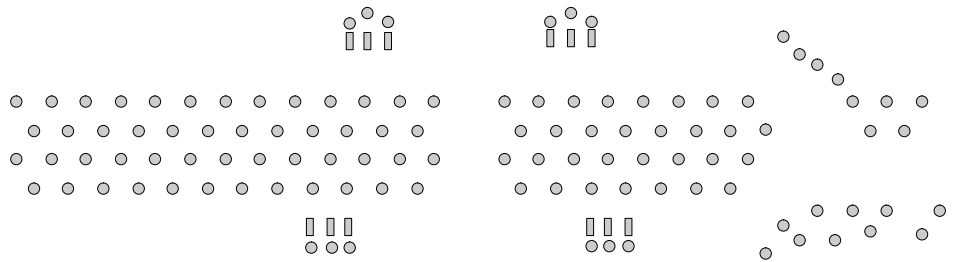
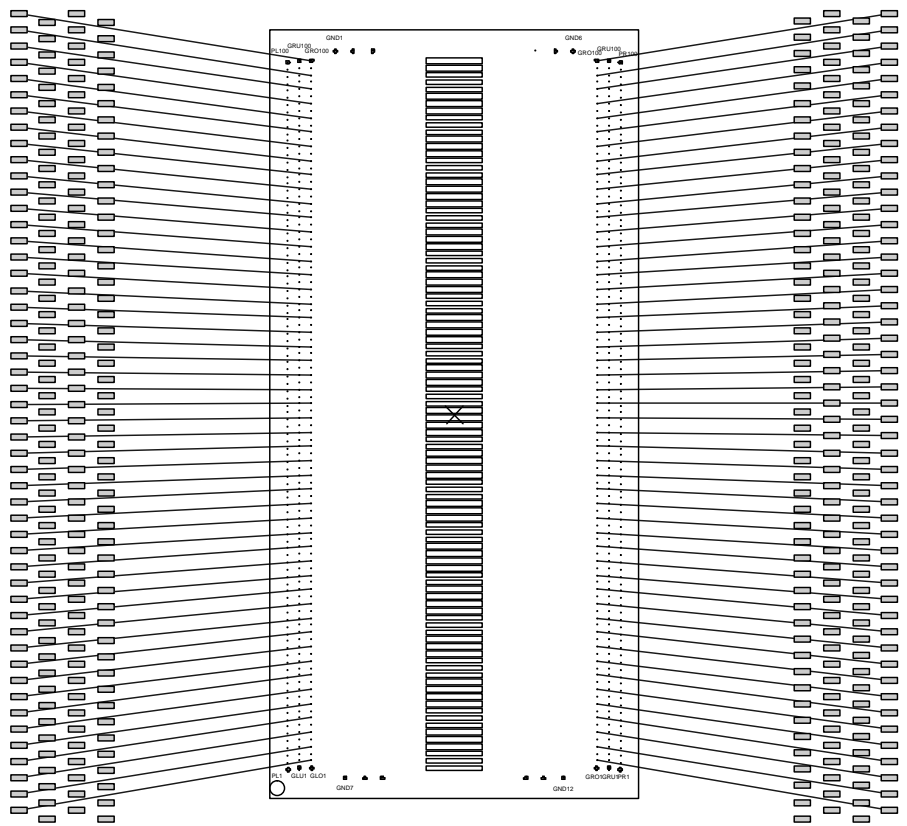
BOND_GRP_A1_2



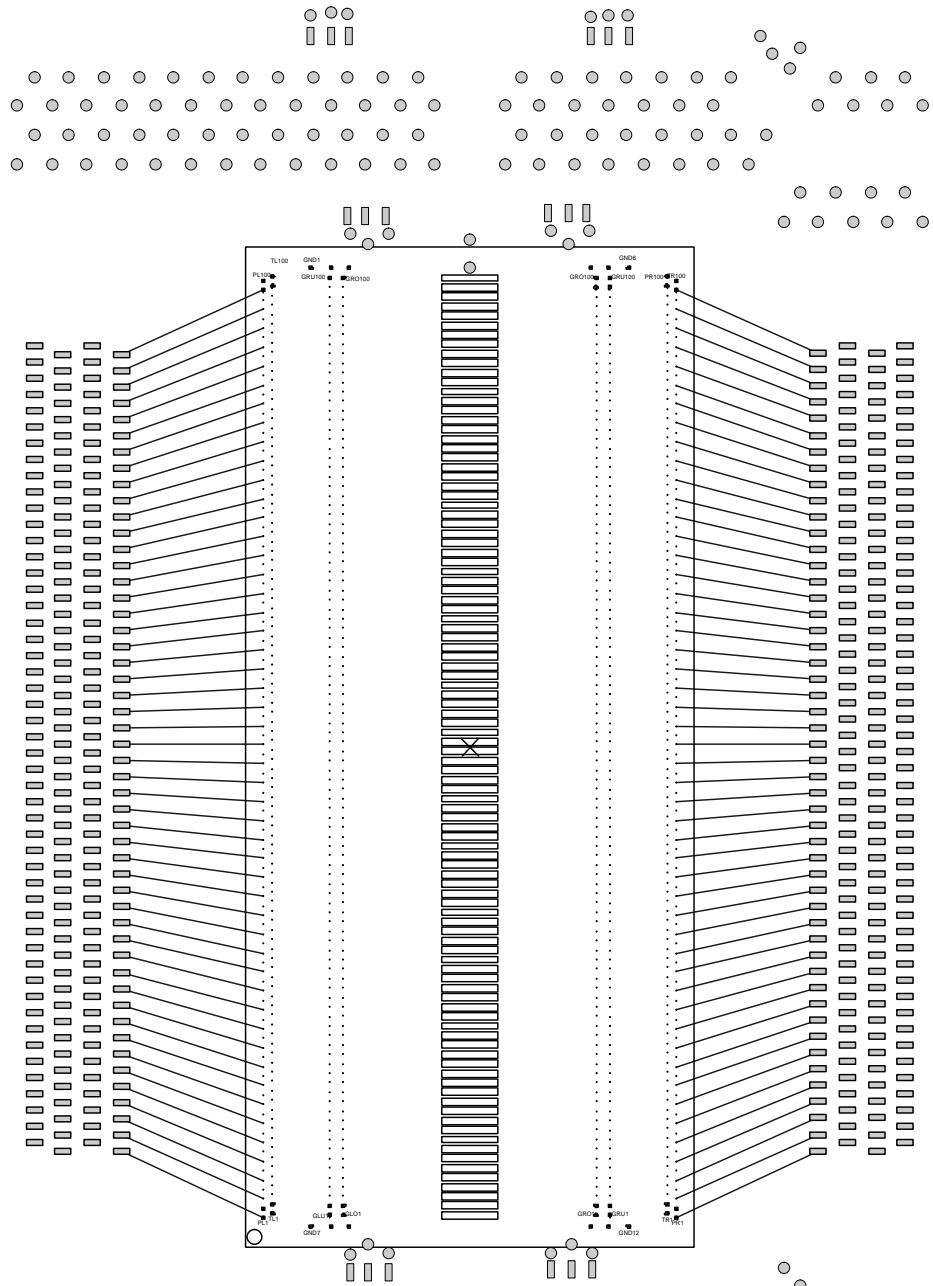




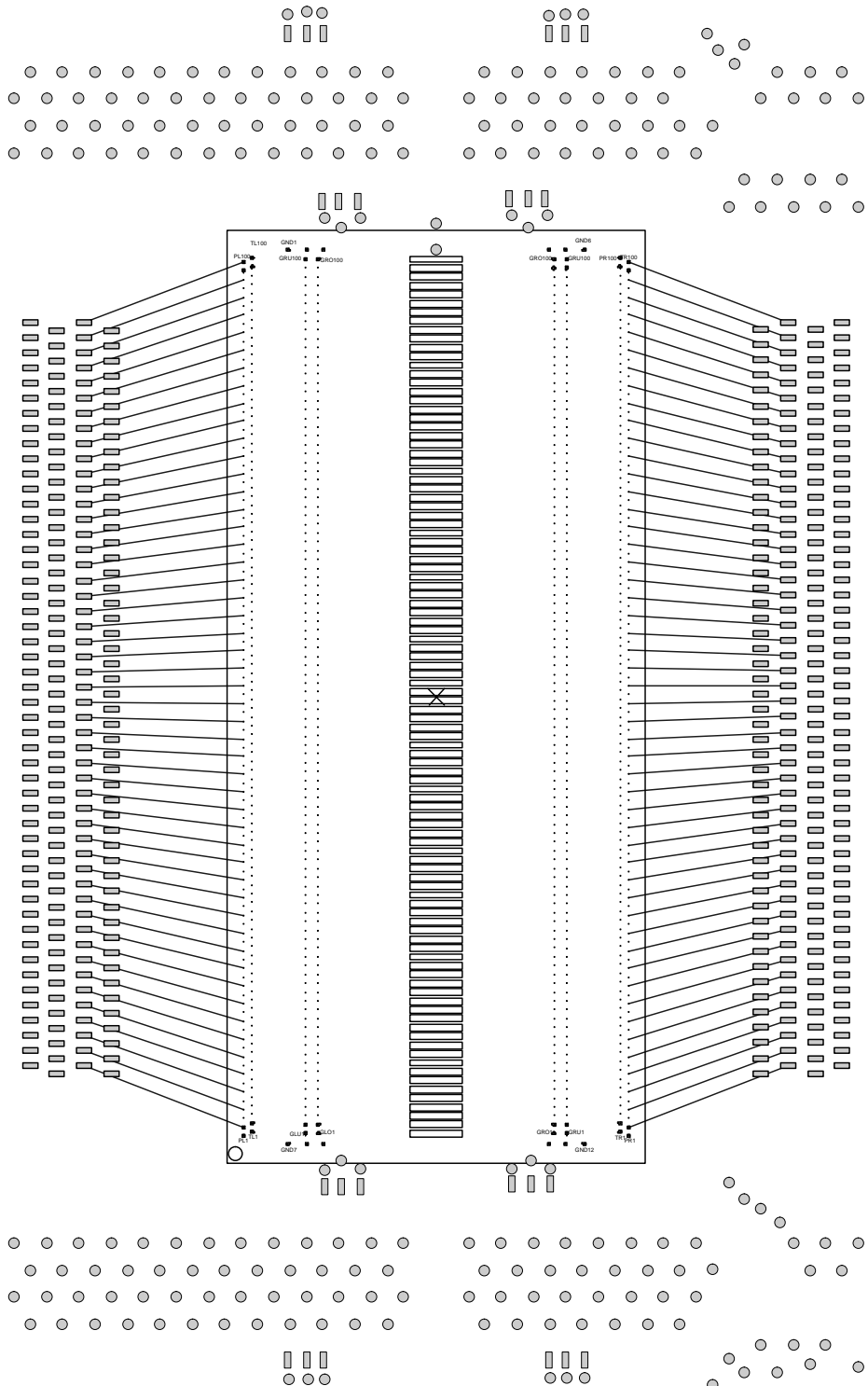
BOND_GRP_A1_4



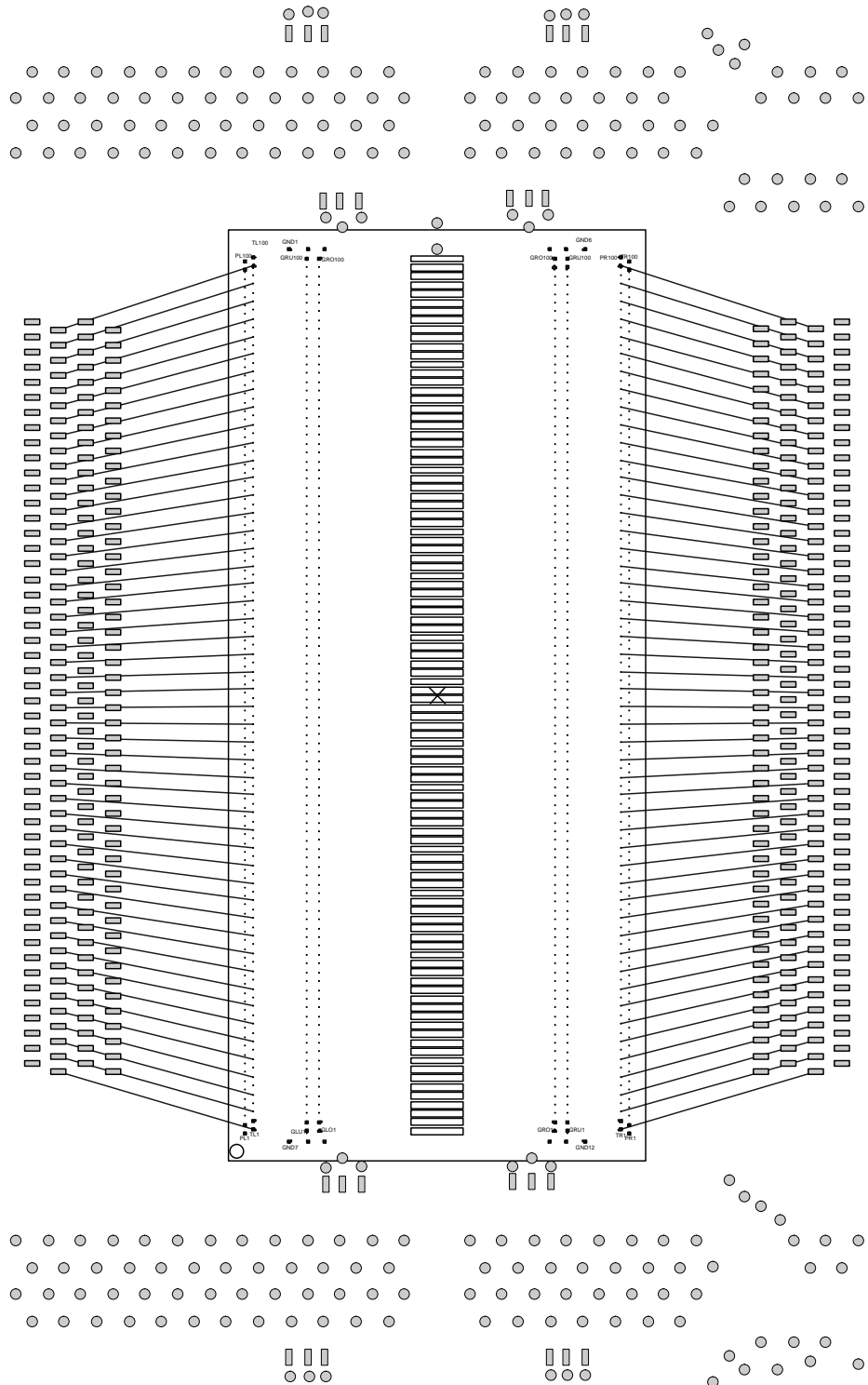
BOND_GRP_BOW_1



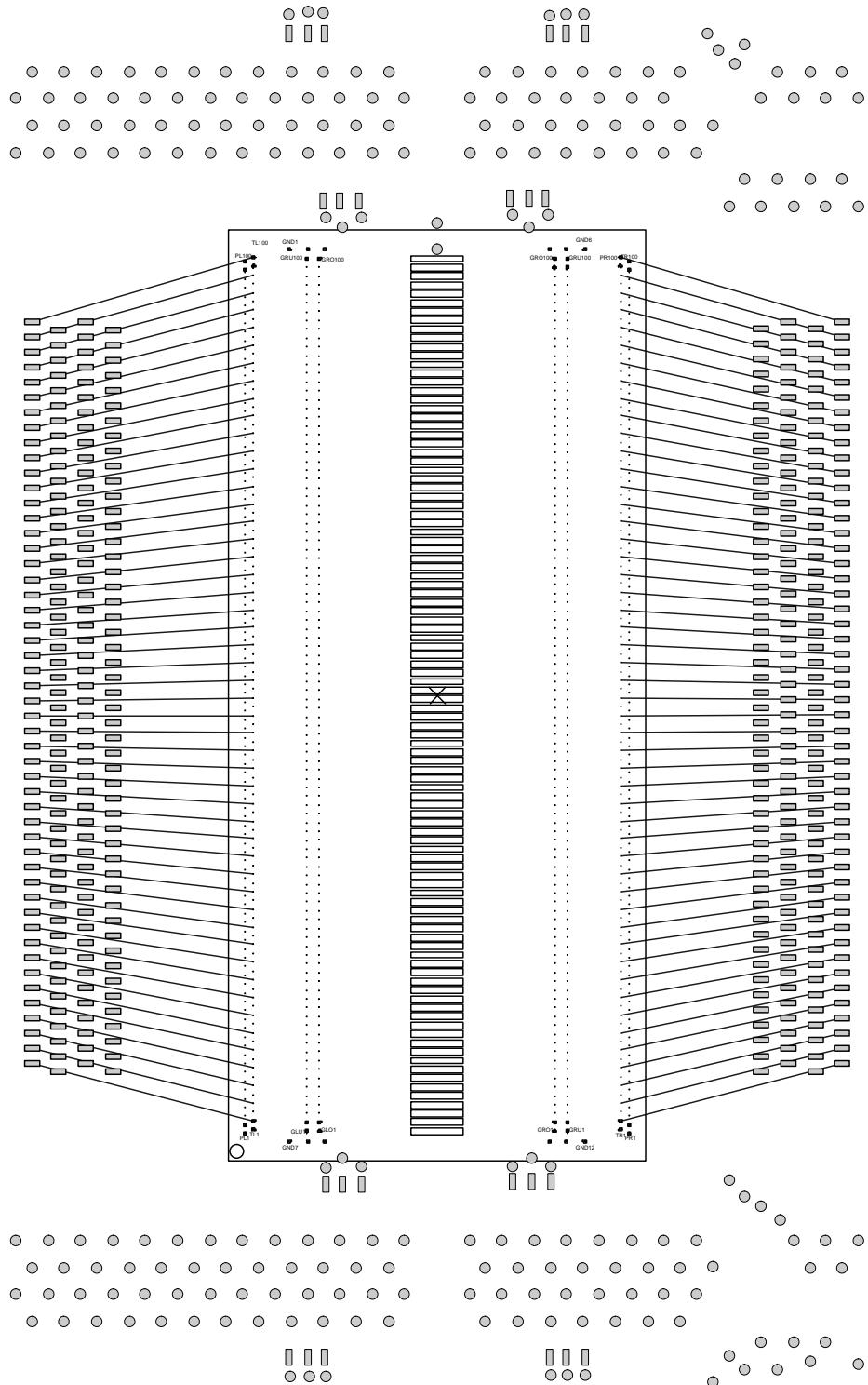
BOND_GRP_BOW_2



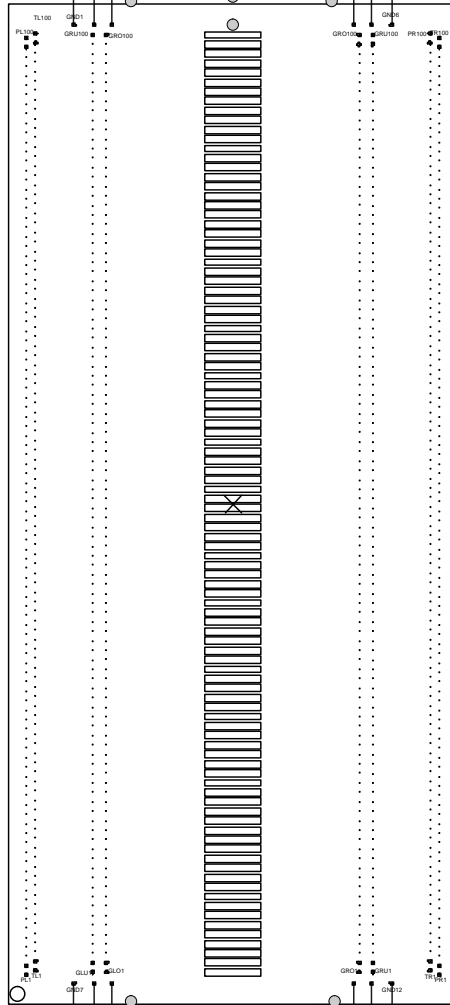
BOND_GRP_BOW_3



BOND_GRP_BOW_4



BOND_GRP_BOW_5



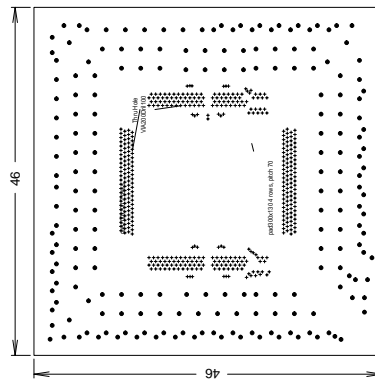
BOND_GRP_A1_4

VIA200Dril100

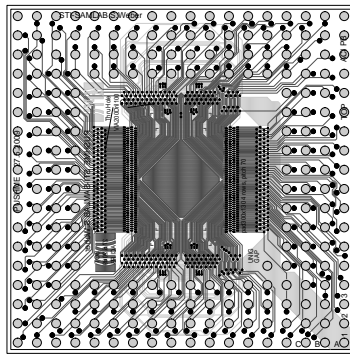
SIG_NAME
A1 A2
B1 B2

SIG_NAME
B1 B2
A1 A2

pad300x130 4 rows, pitch 70



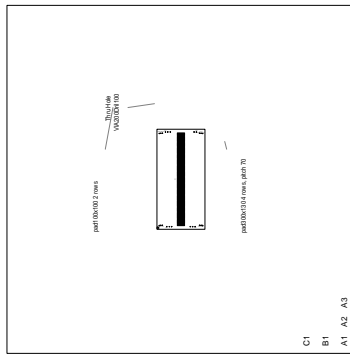
DRILL CHART			
FIGURE	SIZE	PLATED	QTY
.	0.1	PLATED	426
.	0.3	PLATED	200



TITRE:PUSHME

LABORATOIRE:STI-SAMLAB
ENGINEER:S.Weberl

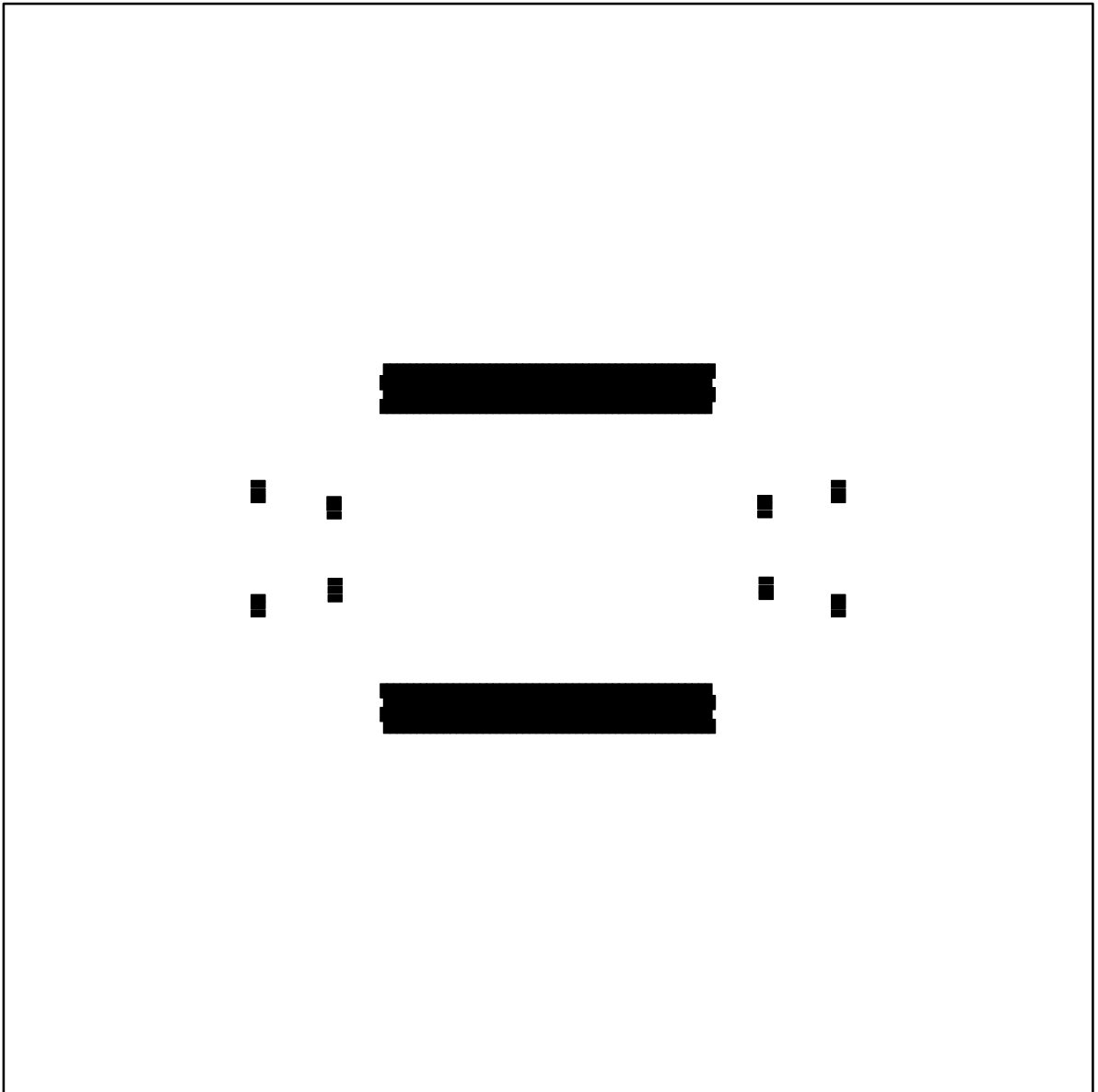
DATE:22.06.2009
EPFL-ACORT-PB



TITRE:PUSHME

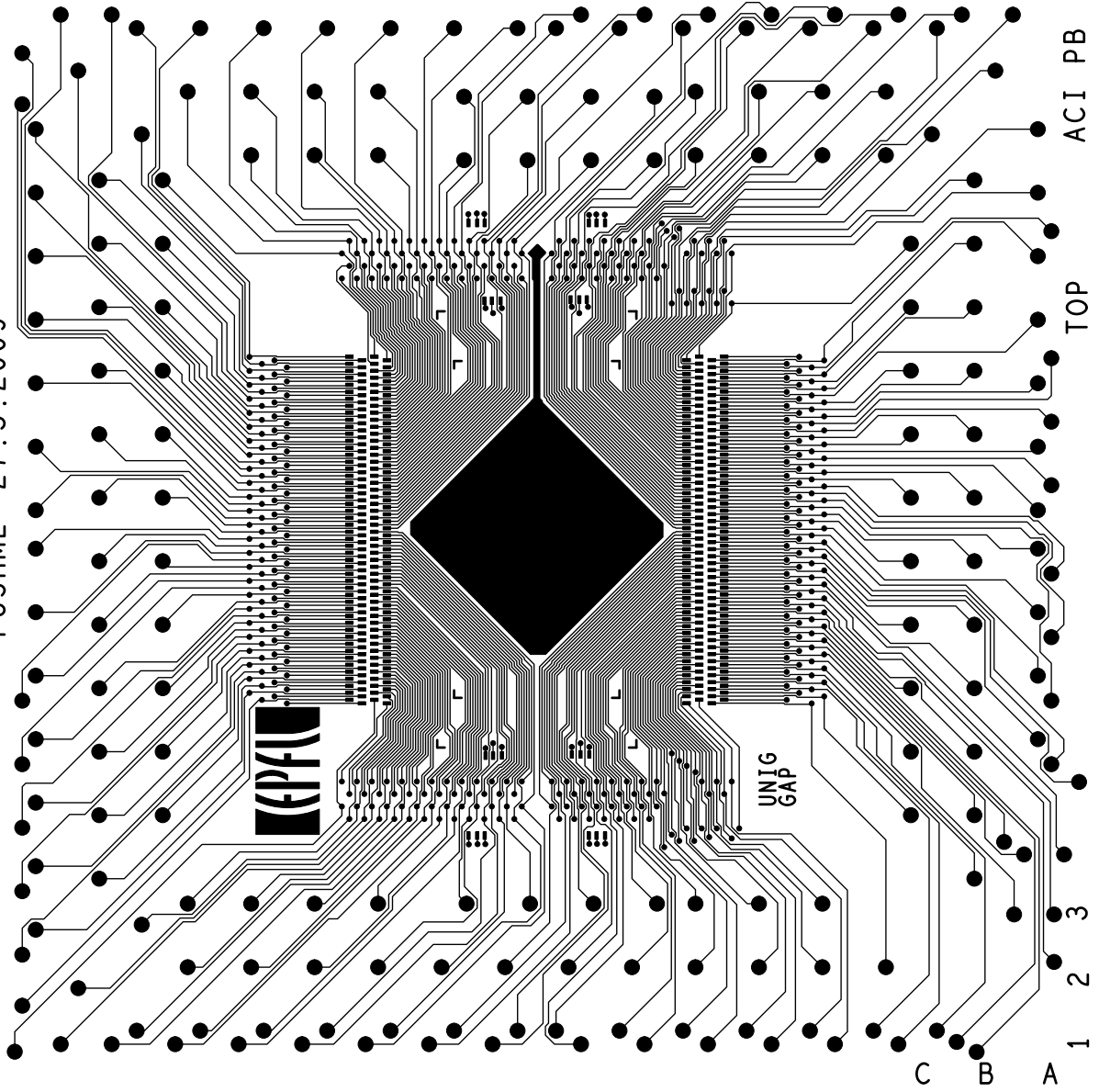
LABORATOIRE:STI-SAMLAB
ENGINEER:S.Weberl

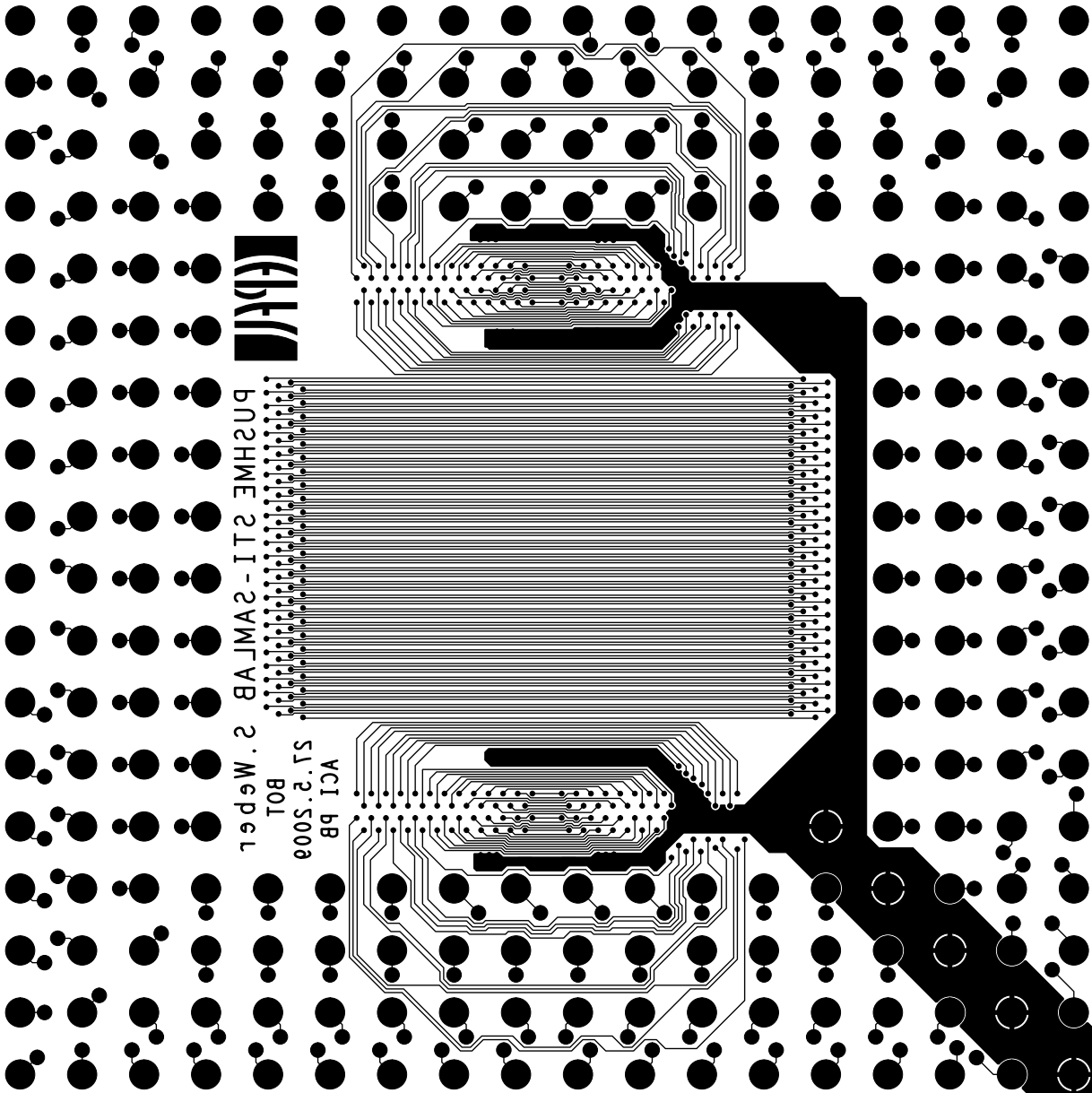
DATE:22.06.2009
EPFL-ACORT-PB



STI-SAMLAB S.Weber

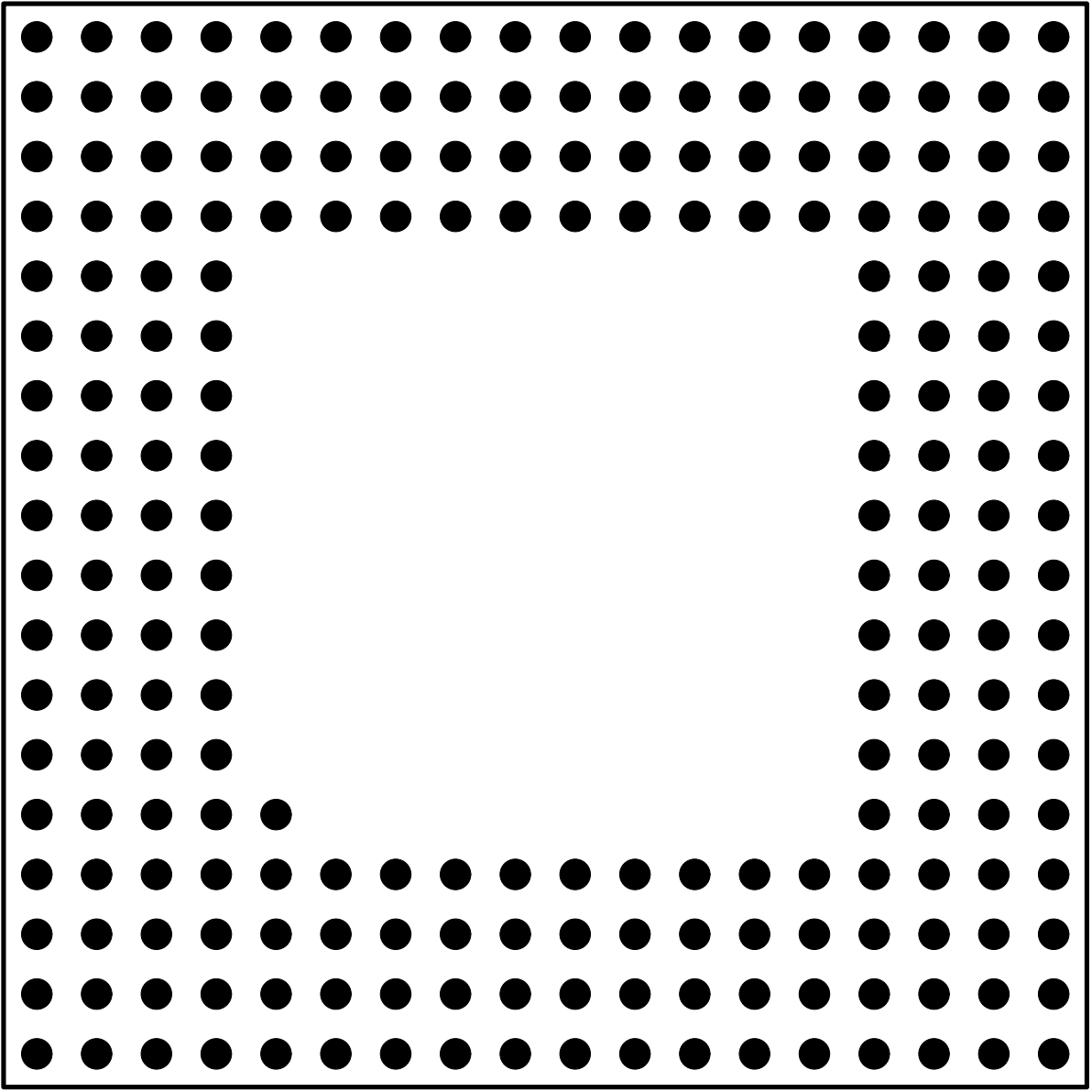
PUSHME 27.5.2009

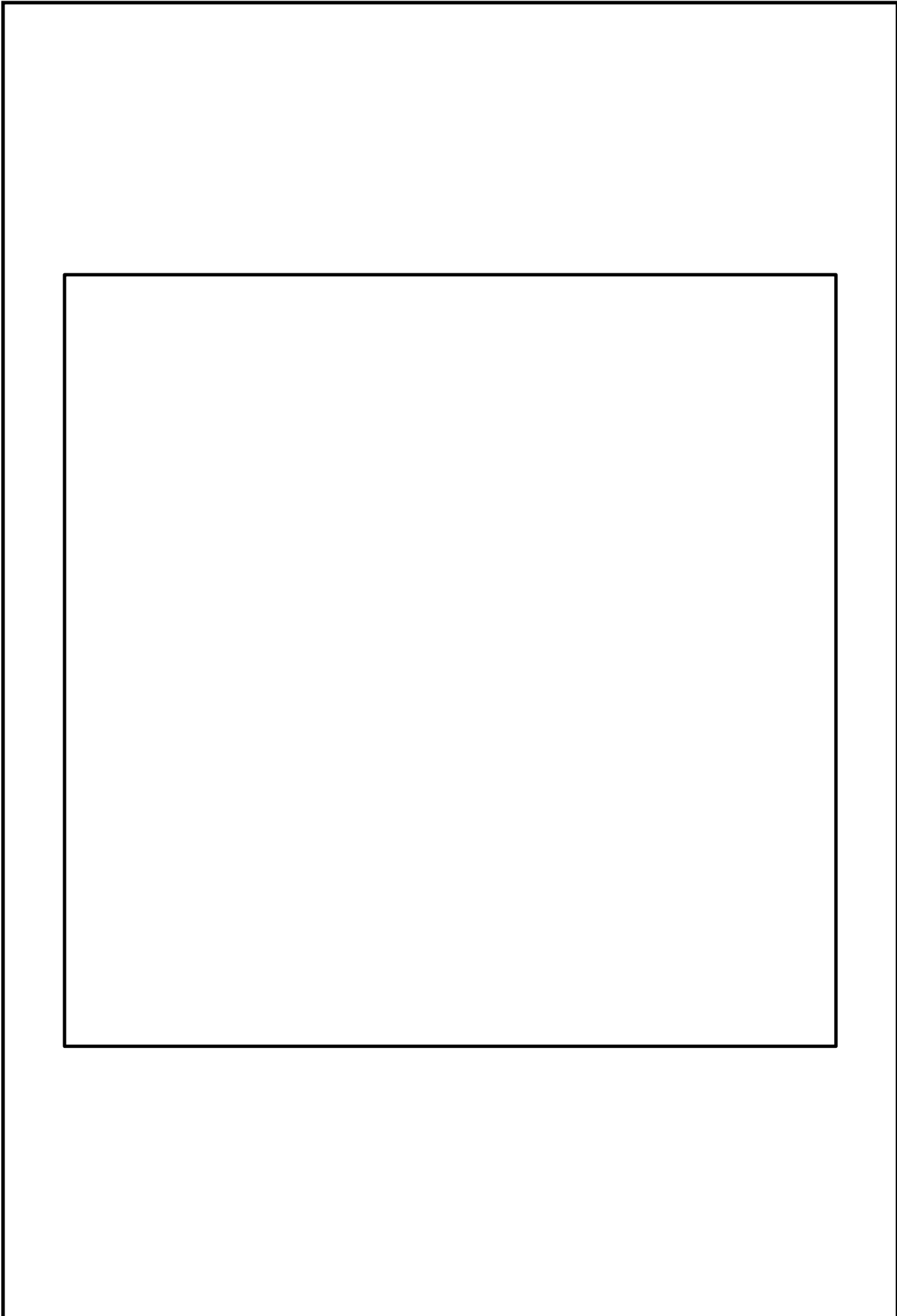




pushme 2 I - 2WMLAB
2 . Weper

VCI bB
S1.2.S00a
B01





Component Report PUSHME

pushme_gloss

Mon Jul 6 11:48:30 MET DST 2009

Ref Des	Device Type	Value	Package Type	x	y	ang	Mir	Remark
J1	PGA225_18X18		PGA225_18X18	0.0000	0.0000	180.000	YES	
U1	PUSHMECHIP_A_1_WIDE		PUSHME_A_1_WIDE	0.0000	0.0000	270.000	NO	
U2	PUSHMECHIP_B0_I_WIDE		PUSHME_B_0_I_WIDE	0.0000	0.0000	270.000	NO	

Total Component count 3

BOM Report PUSHME

pushme_gloss

Mon Jul 6 11:48:31 MET DST 2009

Device	Package	Value	Nb	Reference Designators	Remark
PGA225_18X18	PGA225_18X18		1	J1	
PUSHMECHIP_A_1_WIDE-	PUSHME_A_1_WIDE		1	U1	
PUSHMECHIP_B0_I_WIDE	PUSHME_B_0_I_WIDE		1	U2	

Total Component count 3

NC Pins Report PUSHME

pushme_gloss

Mon Jul 6 11:48:32 MET DST 2009

Ref Des	Device	Nb	Not Connected Pins										Remark
J1	PGA225_18X18	20	A13	A15	A16	A17	A18	K18	L18	M18	N18	P18	
			R18	V8	V9	V10	V11	V12	V13	V14	V15	V18	

Total count 20

Power Pins Report PUSHME

pushme_gloss

Mon Jul 6 11:48:32 MET DST 2009

Ref Des	Device	Name	Power Pins	Remark
J1	PGA225_18X18	GND	A1 B2 C3 D4 E5	
U1	PUSHMECHIP_A_1_WIDE	GND	GND1 GND2 GND3 GND4 GND5 GND6 GND7 GND8 GND9 GND10 GND11GND12	
U2	PUSHMECHIP_B0_I_WIDE	GND	GND1 GND2 GND3 GND4 GND5 GND6 GND7 GND8 GND9 GND10 GND11GND12	

Total count 3

