

CARD EDGE 1

MEC6_40_LOCK_DOWN		EDGE40_VERTICAL
JC1_1	E_BATT1	1 JCA
JC1_2	E_BATT2	2 JCA
JC1_3	E_PGC	3 JCA
JC1_4	E_PGD	4 JCA
JC1_5	E_VB1	5 JCA
JC1_6	E_VB2	6 JCA
JC1_7	E_MCLR	7 JCA
JC1_8	E_REMOTE	8 JCA
JC1_9	E_GB1	9 JCA
JC1_10	E_GB2	10 JCA
JC1_11	E_SDA	11 JCA
JC1_12	E_SPK+	12 JCA
JC1_13	E_SCL	13 JCA
JC1_14	E_SPK-	14 JCA
JC1_15	E_G1	15 JCA
JC1_16	E_G2	16 JCA
JC1_17	E_V3_31	17 JCA
JC1_18	E_V3_32	18 JCA
JC1_19	E_CAM_CLK	19 JCA
JC1_20	E_Y0	20 JCA
JC1_21	E_CAM_RESET	21 JCA
JC1_22	E_Y1	22 JCA
JC1_23	E_VSYNC	23 JCA
JC1_24	E_Y2	24 JCA
JC1_25	E_HREF	25 JCA
JC1_26	E_Y3	26 JCA
JC1_27	E_MIC3	27 JCA
JC1_28	E_Y4	28 JCA
JC1_29	E_PCLK	29 JCA
JC1_30	E_Y5	30 JCA
JC1_31	E_PIC_RESET	31 JCA
JC1_32	E_Y6	32 JCA
JC1_33	E_ENABLE_LDO	33 JCA
JC1_34	E_Y7	34 JCA
JC1_35	E_VA1	35 JCA
JC1_36	E_VA2	36 JCA
JC1_37	E_RS_RX_10V	37 JCA
JC1_38	E_RS_TX_10V	38 JCA
JC1_39	E_GA1	39 JCA
JC1_40	E_GA2	40 JCA

MECH SUPPORT - TOP (TO NEXT TURRET)

		SAMBSE40_SMD	
E_BATT1	=====	JE3_1	E_BATT1
E_BATT2	=====	JE3_2	E_BATT2
		JE3_3	E_PGC
		JE3_4	E_PGD
		JE3_5	E_VB1
		JE3_6	E_VB2
		JE3_7	E_MCLR
		JE3_8	E_REMOTE
		JE3_9	E_GB1
		JE3_10	E_GB2
		JE3_11	E_SDA
		JE3_12	E_SPK+
		JE3_13	E_SCL
		JE3_14	E_SPK-
E_GB1	=====	JE3_15	E_G1
E_GB2	=====	JE3_16	E_G2
E_G1	=====	JE3_17	E_V3_31
E_G2	=====	JE3_18	E_V3_32
		JE3_19	E_CAM_CLK
		JE3_20	E_Y0
		JE3_21	E_CAM_RESET
		JE3_22	E_Y1
		JE3_23	E_VSYNC
		JE3_24	E_Y2
		JE3_25	E_HREF
		JE3_26	E_Y3
		JE3_27	E_MIC3
		JE3_28	E_Y4
		JE3_29	E_PCLK
		JE3_30	E_Y5
		JE3_31	E_PIC_RESET
		JE3_32	E_Y6
		JE3_33	E_ENABLE_LDO
		JE3_34	E_Y7
		JE3_35	E_VA1
		JE3_36	E_VA2
		JE3_37	E_RS_RX_10V
		JE3_38	E_RS_TX_10V
		JE3_39	E_GA1
		JE3_40	E_GA2

CARD EDGE 2

MEC6_40_LOCK_DOWN		EDGE40_VERTICAL
JC2_1	E_XRS_TX	1 JCB
JC2_2	E_RS_TX	2 JCB
JC2_3	E_XRS_RX	3 JCB
JC2_4	E_RS_RX	4 JCB
JC2_5	E_SEL0	5 JCB
JC2_6	E_SEL2	6 JCB
JC2_7	E_SEL1	7 JCB
JC2_8	E_SEL3	8 JCB
JC2_9	E_XBODYLED	9 JCB
JC2_10	E_BODYLED	10 JCB
JC2_11	E_XAUDIO_ON	11 JCB
JC2_12	E_AUDIO_ON	12 JCB
JC2_13	E_XFRONT_LED	13 JCB
JC2_14	E_FRONT_LED	14 JCB
JC2_15	E_XBT_RX	15 JCB
JC2_16	E_BT_RX	16 JCB
JC2_17	E_XBT_TX	17 JCB
JC2_18	E_BT_TX	18 JCB
JC2_19	E_XBATT_LOW	19 JCB
JC2_20	E_BATT_LOW	20 JCB
JC2_21	E_XLED3	21 JCB
JC2_22	E_LED3	22 JCB
JC2_23	E_XSDI	23 JCB
JC2_24	E_SDI	24 JCB
JC2_25	E_XSDO	25 JCB
JC2_26	E_SDO	26 JCB
JC2_27	E_XFSYNC	27 JCB
JC2_28	E_FSYNC	28 JCB
JC2_29	E_XMCLK	29 JCB
JC2_30	E_MCLK	30 JCB
JC2_31	E_XLED5	31 JCB
JC2_32	E_LED5	32 JCB
JC2_33	E_XAXEX	33 JCB
JC2_34	E_AXEX	34 JCB
JC2_35	E_XAXEY	35 JCB
JC2_36	E_AXEY	36 JCB
JC2_37	E_XAXEZ	37 JCB
JC2_38	E_AXEZ	38 JCB
JC2_39	E_V3_33	39 JCB
JC2_40	E_G3	40 JCB

JUMPER - TOP (TO NEXT TURRET)

		SAMBSE40_SMD	
		JE4_1	E_XRS_TX
		JE4_2	E_RS_TX
		JE4_3	E_XRS_RX
		JE4_4	E_RS_RX
		JE4_5	E_SEL0
		JE4_6	E_SEL2
		JE4_7	E_SEL1
		JE4_8	E_SEL3
		JE4_9	E_XBODYLED
		JE4_10	E_BODYLED
		JE4_11	E_XAUDIO_ON
		JE4_12	E_AUDIO_ON
		JE4_13	E_XFRONT_LED
		JE4_14	E_FRONT_LED
		JE4_15	E_XBT_RX
		JE4_16	E_BT_RX
		JE4_17	E_XBT_TX
		JE4_18	E_BT_TX
		JE4_19	E_XBATT_LOW
		JE4_20	E_BATT_LOW
		JE4_21	E_XLED3
		JE4_22	E_LED3
		JE4_23	E_XSDI
		JE4_24	E_SDI
		JE4_25	E_XSDO
		JE4_26	E_SDO
		JE4_27	E_XFSYNC
		JE4_28	E_FSYNC
		JE4_29	E_XMCLK
		JE4_30	E_MCLK
		JE4_31	E_XLED5
		JE4_32	E_LED5
		JE4_33	E_XAXEX
		JE4_34	E_AXEX
		JE4_35	E_XAXEY
		JE4_36	E_AXEY
		JE4_37	E_XAXEZ
		JE4_38	E_AXEZ
		JE4_39	E_V3_33
		JE4_40	E_G3

DRAWING PUCKOMNITOP	ENGINEER:
DATE: Tue Oct 17 11:07:57 2006	PAGE: 1/1 acort cuser

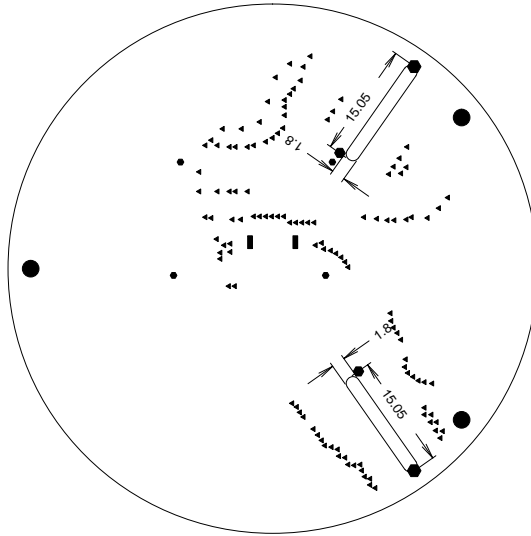
Signal Page Ref PUCKOMNITOP_B

puckomnitop

Tue Apr 17 12:33:58 MET DST 2007

Ref Des	Pages	Ref Des	Pages
E_AUDIO_ON	1 1 1% 1%	E_XAXEZ	1 1 1% 1%
E_AXEX	1 1 1% 1%	E_XBATT_LOW	1 1 1% 1%
E_AXEY	1 1 1% 1%	E_XBODYLED	1 1 1% 1%
E_AXEZ	1 1 1% 1%	E_XBT_RX	1 1 1% 1%
E_BATT1	1 1 1 1% 1% 1%	E_XBT_TX	1 1 1% 1%
E_BATT2	1 1 1 1% 1% 1%	E_XFRONT_LED	1 1 1% 1%
E_BATT_LOW	1 1 1% 1%	E_XFSYNC	1 1 1% 1%
E_BODYLED	1 1 1% 1%	E_XLED3	1 1 1% 1%
E_BT_RX	1 1 1% 1%	E_XLED5	1 1 1% 1%
E_BT_TX	1 1 1% 1%	E_XMCLK	1 1 1% 1%
E_CAM_CLK	1 1 1% 1%	E_XRS_RX	1 1 1% 1%
E_CAM_RESET	1 1 1% 1%	E_XRS_TX	1 1 1% 1%
E_ENABLE_LDO	1 1 1% 1%	E_XSDI	1 1 1% 1%
E_FRONT_LED	1 1 1% 1%	E_XSDO	1 1 1% 1%
E_FSYNC	1 1 1% 1%	E_Y0	1 1 1% 1%
E_G1	1 1 1 1% 1% 1%	E_Y1	1 1 1% 1%
E_G2	1 1 1 1% 1% 1%	E_Y2	1 1 1% 1%
E_G3	1 1 1% 1%	E_Y3	1 1 1% 1%
E_GA1	1 1 1% 1%	E_Y4	1 1 1% 1%
E_GA2	1 1 1% 1%	E_Y5	1 1 1% 1%
E_GB1	1 1 1 1% 1% 1%	E_Y6	1 1 1% 1%
E_GB2	1 1 1 1% 1% 1%	E_Y7	1 1 1% 1%
E_HREF	1 1 1% 1%		
E_LED3	1 1 1% 1%	Total Signals count 80	
E_LED5	1 1 1% 1%		
E_MCLK	1 1 1% 1%		
E_MCLR	1 1 1% 1%		
E_MIC3	1 1 1% 1%		
E_PCLK	1 1 1% 1%		
E_PGC	1 1 1% 1%		
E_PGD	1 1 1% 1%		
E_PIC_RESET	1 1 1% 1%		
E_REMOTE	1 1 1% 1%		
E_RS_RX	1 1 1% 1%		
E_RS_RX_10V	1 1 1% 1%		
E_RS_TX	1 1 1% 1%		
E_RS_TX_10V	1 1 1% 1%		
E_SCL	1 1 1% 1%		
E_SDA	1 1 1% 1%		
E_SDI	1 1 1% 1%		
E_SDO	1 1 1% 1%		
E_SEL0	1 1 1% 1%		
E_SEL1	1 1 1% 1%		
E_SEL2	1 1 1% 1%		
E_SEL3	1 1 1% 1%		
E_SPK+	1 1 1% 1%		
E_SPK-	1 1 1% 1%		
E_V3_31	1 1 1% 1%		
E_V3_32	1 1 1% 1%		
E_V3_33	1 1 1% 1%		
E_VA1	1 1 1% 1%		
E_VA2	1 1 1% 1%		
E_VB1	1 1 1% 1%		
E_VB2	1 1 1% 1%		
E_VSYNC	1 1 1% 1%		
E_XAUDIO_ON	1 1 1% 1%		
E_XAXEX	1 1 1% 1%		
E_XAXEY	1 1 1% 1%		

DRILL CHART			
FIGURE	SIZE	PLATED	QTY
.	0.203	PLATED	120
■	1.7	PLATED	2
●	2.2	PLATED	3
•	0.9	NOT PLATED	4
●	1.4	NOT PLATED	2
●	1.8	NOT PLATED	2



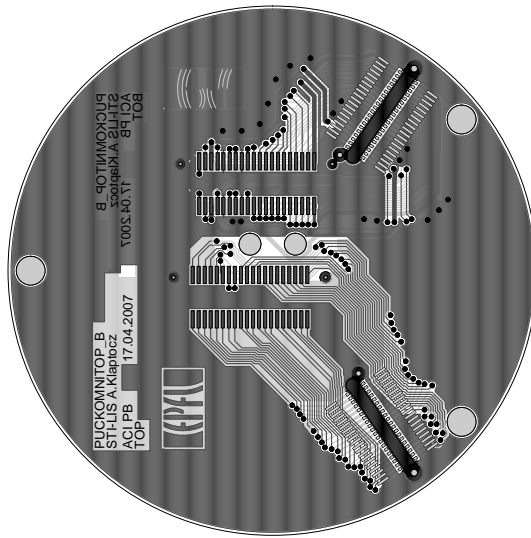
TITRE:

LABORATOIRE:

DATE:

ENGINEER:

EPFL-ACORT-



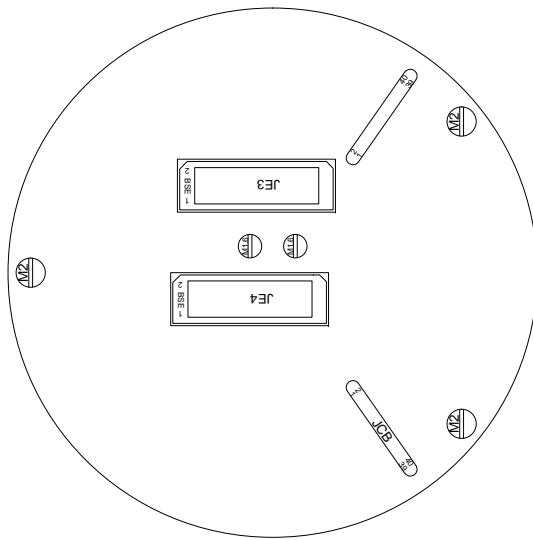
TITRE:

LABORATOIRE:

DATE:

ENGINEER:

EPFL-ACORT-



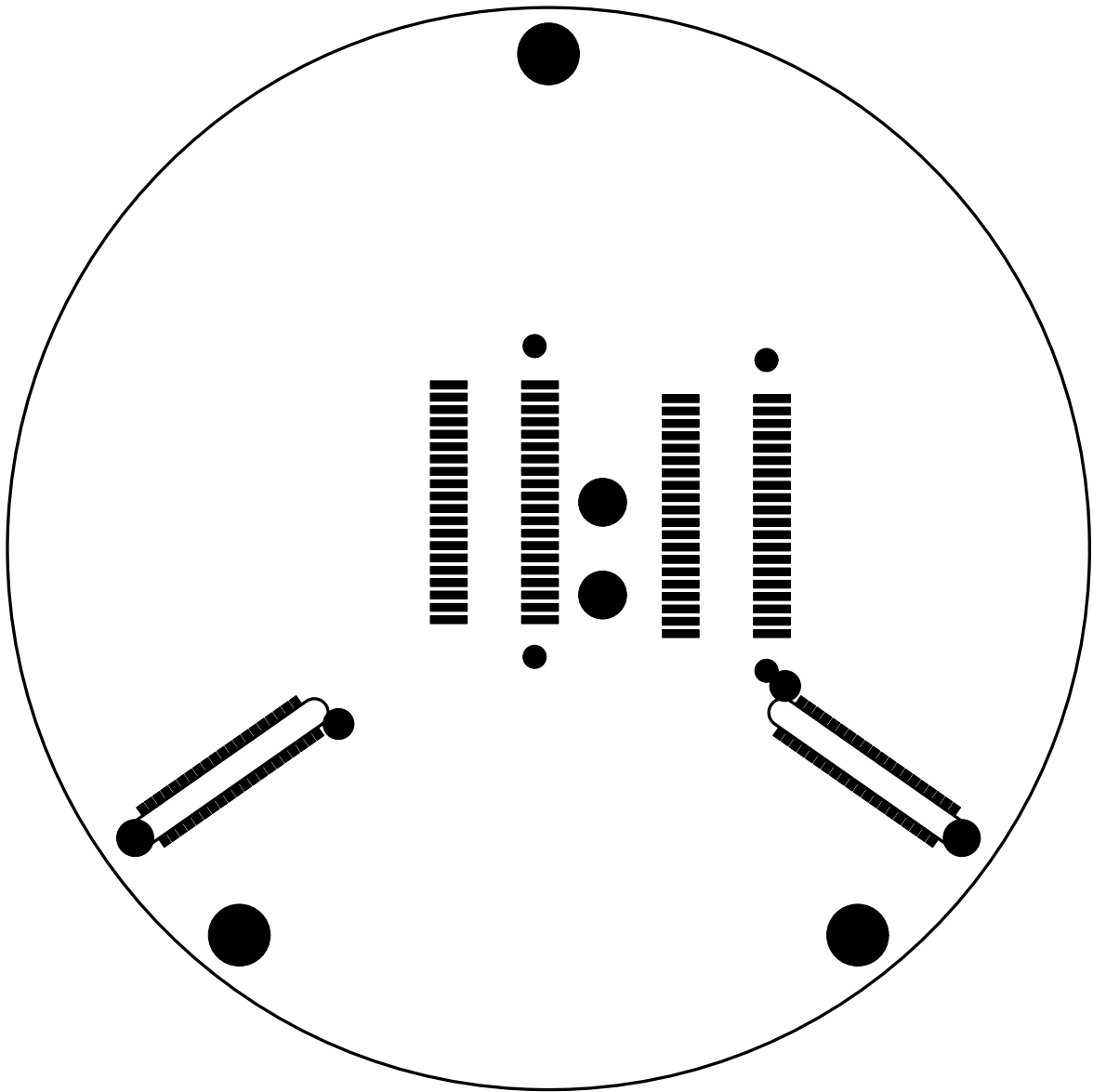
TITRE:

LABORATOIRE:

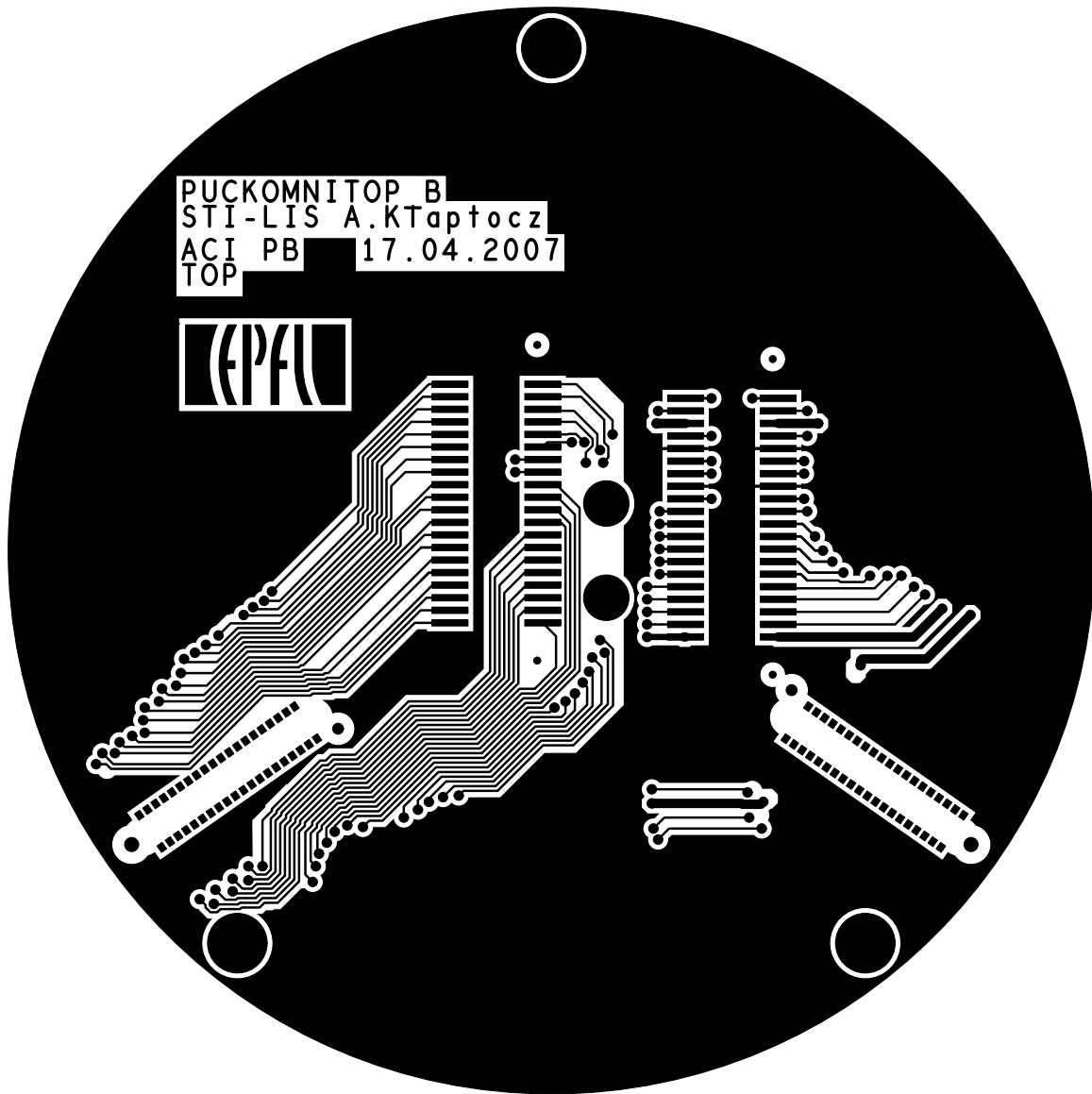
DATE:

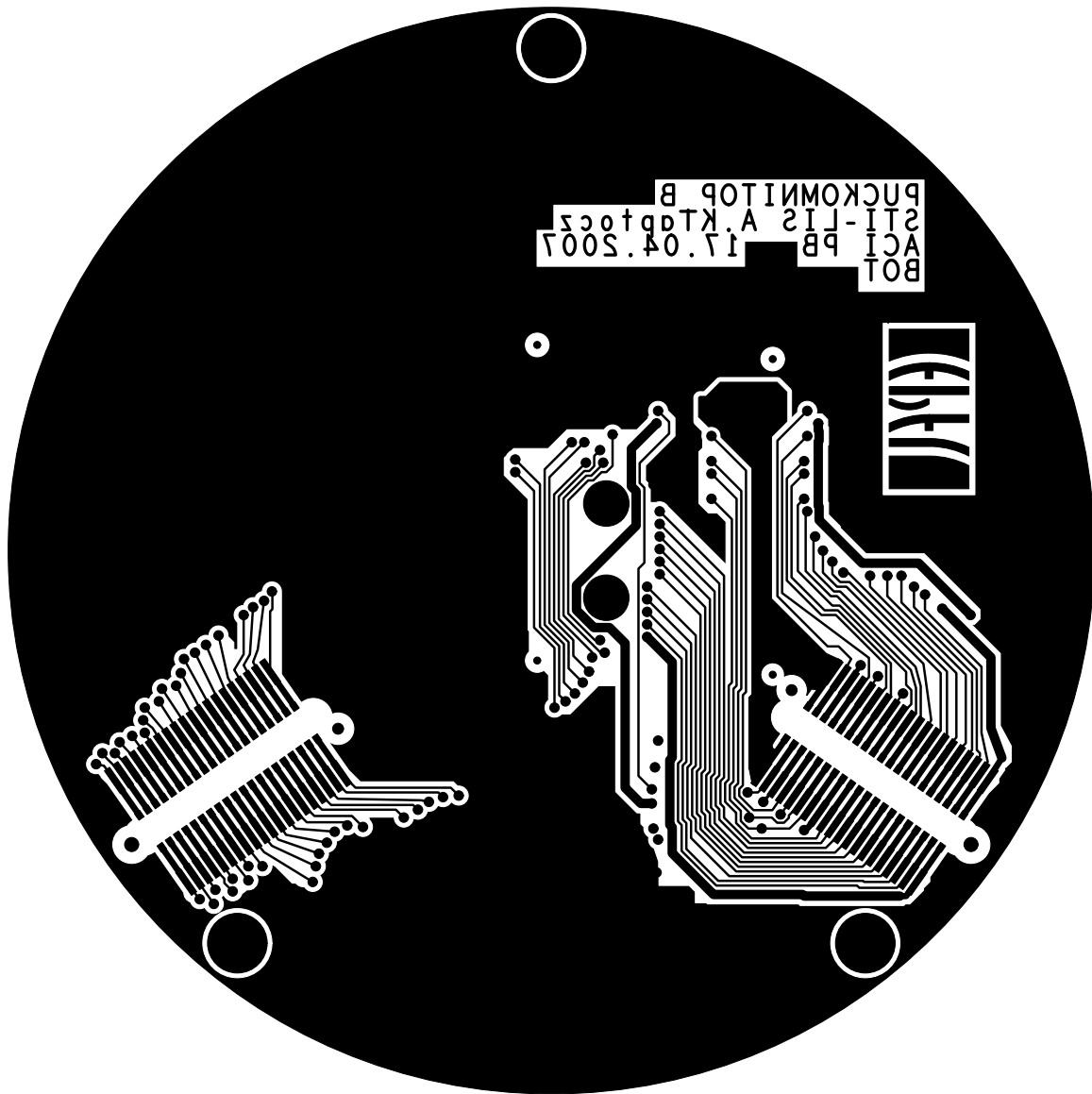
ENGINEER:

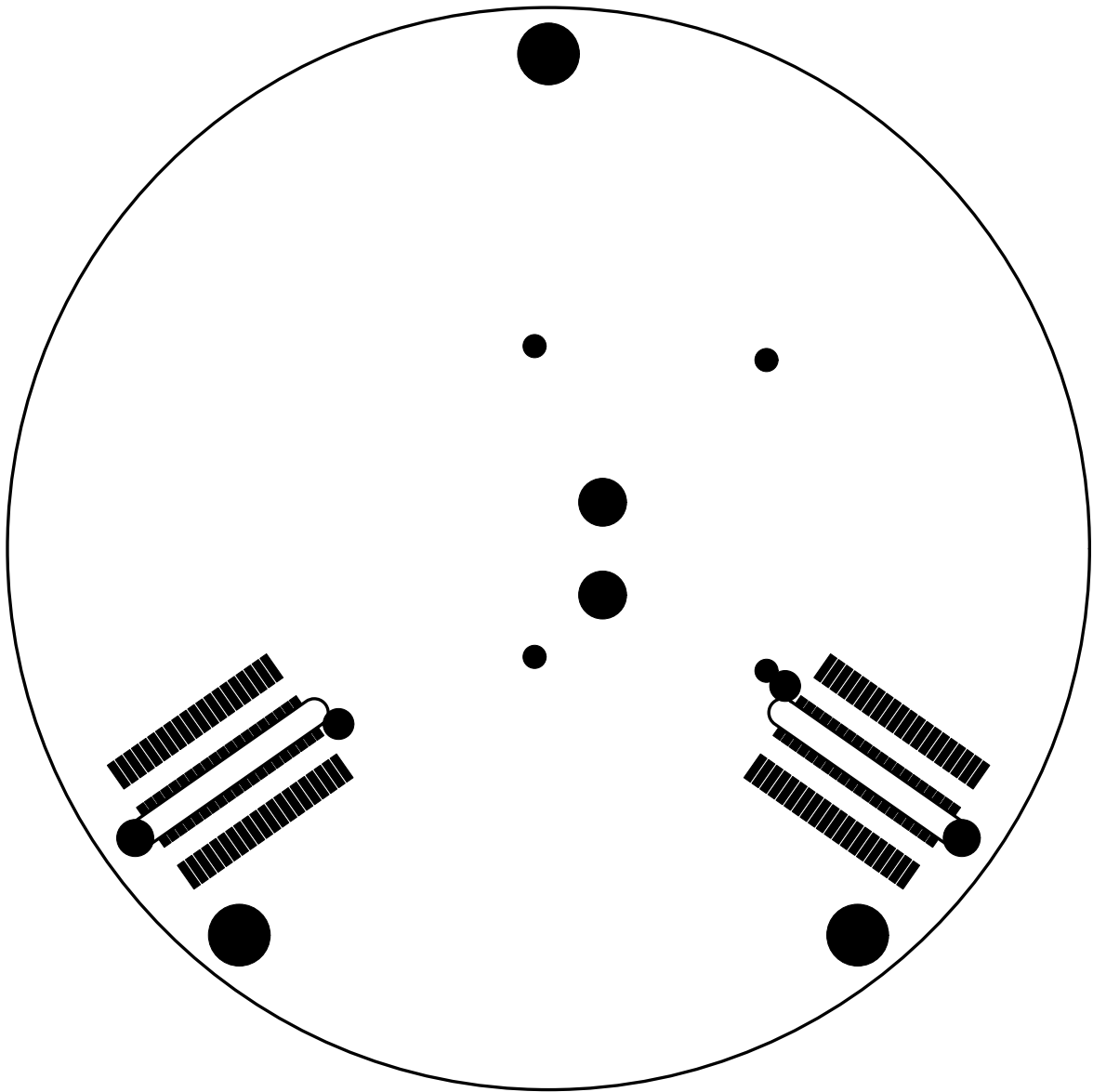
EPFL-ACORT-

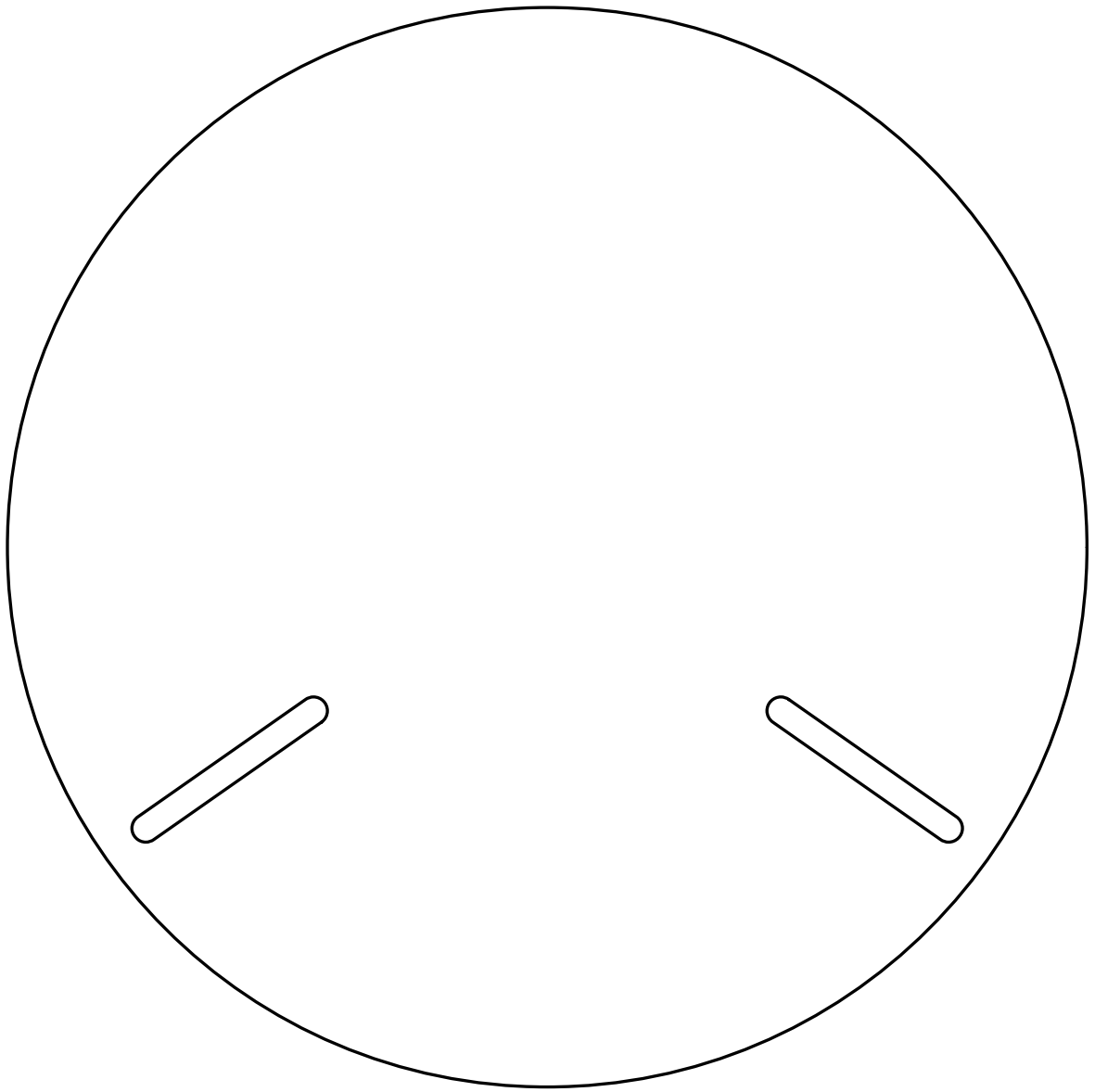


PUCKOMNITOP B
STI-LIS A.KTaptocz
ACI PB 17.04.2007
TOP









Component Report PUCKOMNITOP_B

puckomnitop_gloss

Tue Apr 17 12:33:58 MET DST 2007

Ref Des	Device Type	Value	Package Type	x	y	ang	Mir	Remark
JC1	CO40		MEC6_40_LOCK_DOWN	20.589	-14.416	145.000	YES	
JC2	CO40		MEC6_40_LOCK_DOWN	-20.589	-14.416	35.000	YES	
JCA	CO40		EDGE40_VERTICAL	20.589	-14.416	325.000	NO	
JCB	CO40		EDGE40_VERTICAL	-20.589	-14.416	215.000	NO	
JE3	CO40		SAMBSE40_SMD_08MM	11.500	2.100	90.000	NO	
JE4	CO40		SAMBSE40_SMD_08MM	-3.500	3.000	90.000	NO	

Total Component count 6

BOM Report PUCKOMNITOP_B

puckomnitop_gloss

Tue Apr 17 12:33:59 MET DST 2007

Device	Package	Value	Nb	Reference	Designators	Remark
CO40-EDGE40_VERTICAL	EDGE40_VERTICAL		2	JCA	JCB	
CO40-MEC6_40_LOCK_DO	MEC6_40_LOCK_DOWN		2	JC1	JC2	
CO40-SAMBSE40_SMD	SAMBSE40_SMD_08MM		2	JE3	JE4	

Total Component count 6

NC Pins Report PUCKOMNITOP_B

puckomnitop_gloss

Tue Apr 17 12:33:59 MET DST 2007

Ref Des	Device	Nb	Not Connected Pins	Remark
0		0		

Total count 0

Power Pins Report PUCKOMNITOP_B

puckomnitop_gloss

Tue Apr 17 12:34:00 MET DST 2007

Ref Des	Device	Name	Power Pins				Remark
JC1	CO40-MEC6_40_LOCK_DO	GND	9	10	15	16	
JCA	CO40-EDGE40_VERTICAL	GND	9	10	15	16	
JE3	CO40-SAMBSE40_SMD	GND	9	10	15	16	

Total count 3

