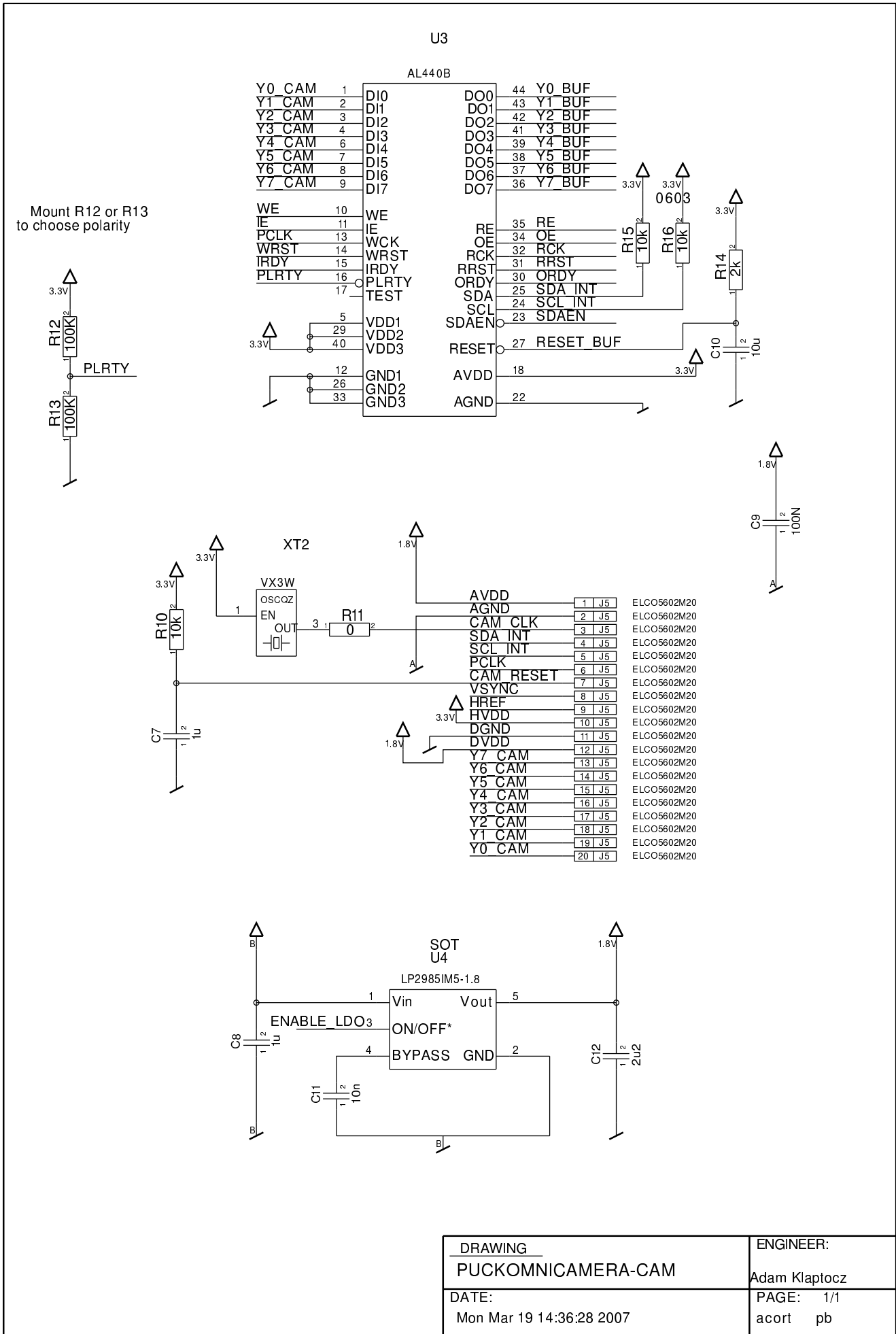


DRAWING PUCKOMNICAMERA-PIC	ENGINEER: Adam Klaptozc
DATE: Mon Mar 26 15:28:28 2007	PAGE: 1/1 acort pb



DRAWING PUCKOMNICAMERA-CAM	ENGINEER: Adam Klaptecz
DATE: Mon Mar 19 14:36:28 2007	PAGE: 1/1 acort pb

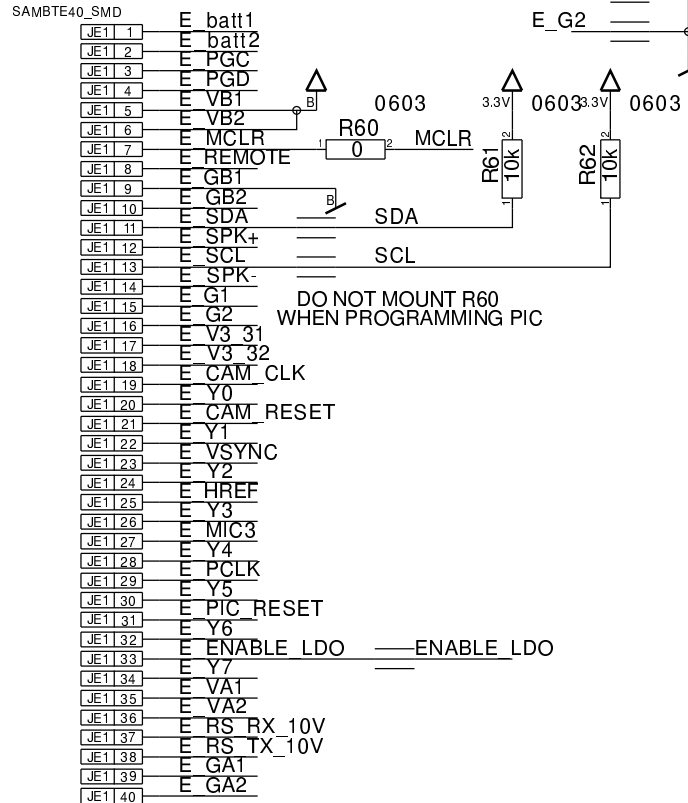
E_batt2 E_batt1

E_GB1
E_GB2
E_G1
E_G2

CARD EDGE 1

MEC6_40_LOCK	E	EDGE40_VERTICAL
JC1_1	E_batt1	1 JCA
JC1_2	E_batt2	2 JCA
JC1_3	E_PGC	3 JCA
JC1_4	E_PGD	4 JCA
JC1_5	E_VB1	5 JCA
JC1_6	E_VB2	6 JCA
JC1_7	E_MCLR	7 JCA
JC1_8	E_REMOTE	8 JCA
JC1_9	E_GB1	9 JCA
JC1_10	E_GB2	10 JCA
JC1_11	E_SDA	11 JCA
JC1_12	E_SPK+	12 JCA
JC1_13	E_SCL	13 JCA
JC1_14	E_SPK-	14 JCA
JC1_15	E_G1	15 JCA
JC1_16	E_G2	16 JCA
JC1_17	E_V3_31	17 JCA
JC1_18	E_V3_32	18 JCA
JC1_19	E_CAM_CLK	19 JCA
JC1_20	E_Y0	20 JCA
JC1_21	E_CAM_RESET	21 JCA
JC1_22	E_Y1	22 JCA
JC1_23	E_VSYNC	23 JCA
JC1_24	E_Y2	24 JCA
JC1_25	E_HREF	25 JCA
JC1_26	E_Y3	26 JCA
JC1_27	E_MIC3	27 JCA
JC1_28	E_Y4	28 JCA
JC1_29	E_PCLK	29 JCA
JC1_30	E_Y5	30 JCA
JC1_31	E_PIC_RESET	31 JCA
JC1_32	E_Y6	32 JCA
JC1_33	E_ENABLE_LDO	33 JCA
JC1_34	E_Y7	34 JCA
JC1_35	E_VA1	35 JCA
JC1_36	E_VA2	36 JCA
JC1_37	E_RS_RX_10V	37 JCA
JC1_38	E_RS_TX_10V	38 JCA
JC1_39	E_GA1	39 JCA
JC1_40	E_GA2	40 JCA

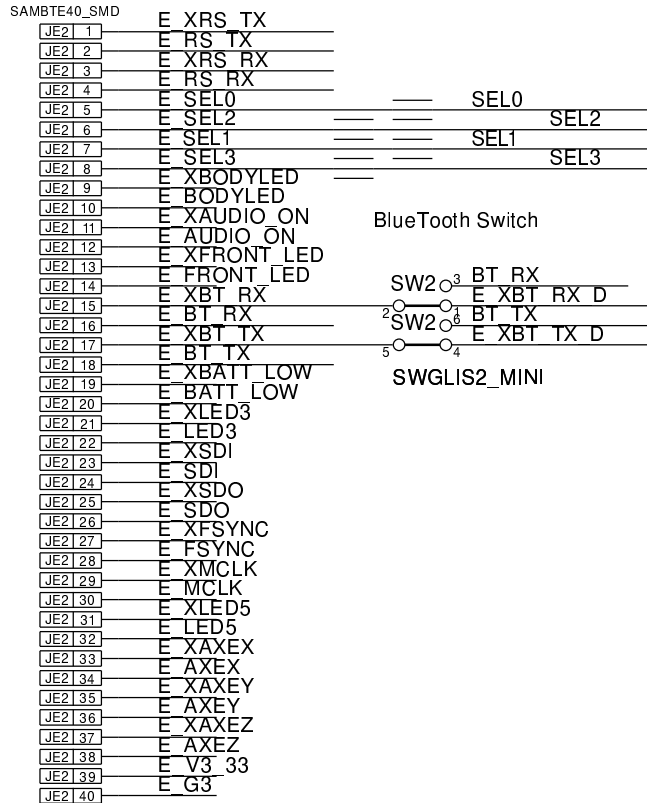
MECH SUPPORT - BOT (TO PIC)



CARD EDGE 2

MEC6_40_LOCK	E	EDGE40_VERTICAL
JC2_1	E_XRS_TX	1 JCB
JC2_2	E_RS_TX	2 JCB
JC2_3	E_XRS_RX	3 JCB
JC2_4	E_RS_RX	4 JCB
JC2_5	E_SEL0	5 JCB
JC2_6	E_SEL2	6 JCB
JC2_7	E_SEL1	7 JCB
JC2_8	E_SEL3	8 JCB
JC2_9	E_XBODYLED	9 JCB
JC2_10	E_BODYLED	10 JCB
JC2_11	E_XAUDIO_ON	11 JCB
JC2_12	E_AUDIO_ON	12 JCB
JC2_13	E_XFRONT_LED	13 JCB
JC2_14	E_FRONT_LED	14 JCB
JC2_15	E_XBT_RX_D	15 JCB
JC2_16	E_BT_RX	16 JCB
JC2_17	E_XBT_TX_D	17 JCB
JC2_18	E_BT_TX	18 JCB
JC2_19	E_XBATT_LOW	19 JCB
JC2_20	E_BATT_LOW	20 JCB
JC2_21	E_XLED3	21 JCB
JC2_22	E_LED3	22 JCB
JC2_23	E_XSDI	23 JCB
JC2_24	E_SDI	24 JCB
JC2_25	E_XSDO	25 JCB
JC2_26	E_SDO	26 JCB
JC2_27	E_XFSYNC	27 JCB
JC2_28	E_FSYNC	28 JCB
JC2_29	E_XMCLK	29 JCB
JC2_30	E_MCLK	30 JCB
JC2_31	E_XLED5	31 JCB
JC2_32	E_LED5	32 JCB
JC2_33	E_XAXEX	33 JCB
JC2_34	E_AXEX	34 JCB
JC2_35	E_XAXEY	35 JCB
JC2_36	E_AXEY	36 JCB
JC2_37	E_XAXEZ	37 JCB
JC2_38	E_AXEZ	38 JCB
JC2_39	E_V3_33	39 JCB
JC2_40	E_G3	40 JCB

JUMPER - BOT (TO PIC)



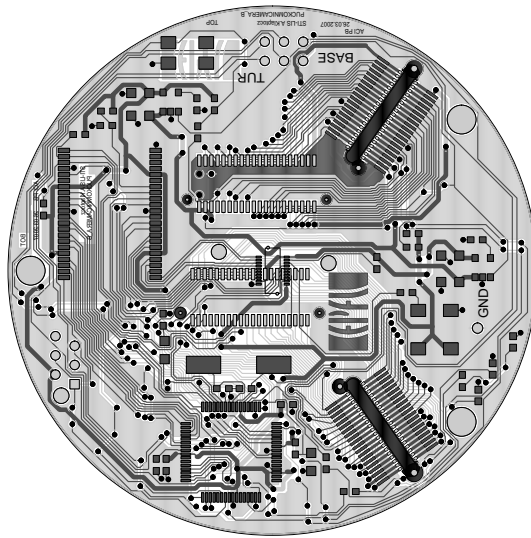
DRAWING PUCKOMNICAMERA-CONN	ENGINEER: Adam Klaptocz
DATE: Mon Mar 26 17:56:03 2007	PAGE: 1/1 acort pb

Signal Page Ref PUCKOMNICAMERA_C

puckomnicamera

Tue Mar 27 11:00:42 MET DST 2007

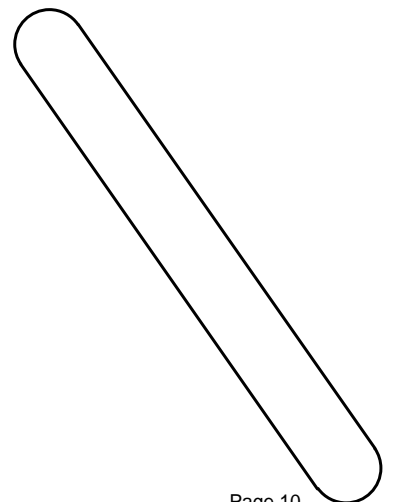
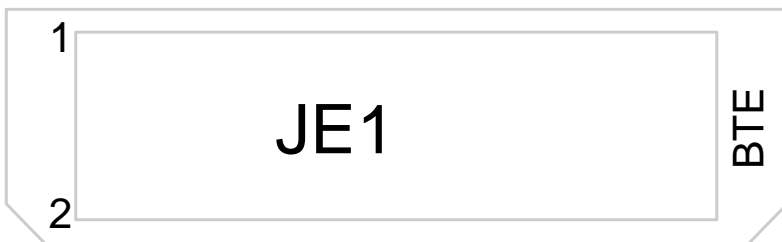
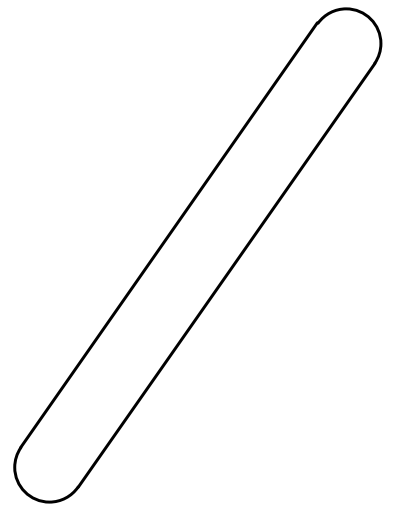
Ref Des	Pages	Ref Des	Pages
AGND	2	E_SPK-	3 3
AVDD	2	E_V3_31	3 3
BT_RX	1 3	E_V3_32	3 3
BT_TX	1 3	E_V3_33	3 3
CAM_CLK	2	E_VA1	3 3
CAM_RESET	1 2	E_VA2	3 3
DEBUG0	1 1	E_VB1	3 3
DEBUG1	1 1	E_VB2	3 3
DEBUG2	1 1	E_VSYNC	3 3
DGND	2	E_XAUDIO_ON	3 3
DVDD	2	E_XAXEX	3 3
ENABLE_LDO	1 2 3	E_XAXEY	3 3
E_AUDIO_ON	3 3	E_XAXEZ	3 3
E_AXEX	3 3	E_XBATT_LOW	3 3
E_AXEY	3 3	E_XBODYLED	3 3
E_AXEZ	3 3	E_XBT_RX	3
E_batt1	3 3 3	E_XBT_RX_D	3 3
E_batt2	3 3 3	E_XBT_TX	3
E_BATT_LOW	3 3	E_XBT_TX_D	3 3
E_BODYLED	3 3	E_XFRONT_LED	3 3
E_BT_RX	3 3	E_XFSYNC	3 3
E_BT_TX	3 3	E_XLED3	3 3
E_CAM_CLK	3 3	E_XLED5	3 3
E_CAM_RESET	3 3	E_XMCLK	3 3
E_ENABLE_LDO	3 3	E_XRS_RX	3 3
E_FRONT_LED	3 3	E_XRS_TX	3 3
E_FSYNC	3 3	E_XSDI	3 3
E_G1	3 3 3	E_XSDO	3 3
E_G2	3 3 3	E_Y0	3 3
E_G3	3 3	E_Y1	3 3
E_GA1	3 3	E_Y2	3 3
E_GA2	3 3	E_Y3	3 3
E_GB1	3 3 3	E_Y4	3 3
E_GB2	3 3 3	E_Y5	3 3
E_HREF	3 3	E_Y6	3 3
E_LED3	3 3	E_Y7	3 3
E_LED5	3 3	HREF	1 2
E_MCLK	3 3	HVDD	2
E_MCLR	3 3	IE	1 2
E_MIC3	3 3	IRDY	1 2
E_PCLK	3 3	MCLR	1 1 3
E_PGC	3 3	OE	1 2
E_PGD	3 3	ORDY	1 2
E_PIC_RESET	3 3	PCLK	1 2 2
E_REMOTE	3 3	PGC	1
E_RS_RX	3 3	PGD	1
E_RS_RX_10V	3 3	PLRTY	2 2
E_RS_TX	3 3	RCK	1 2
E_RS_TX_10V	3 3	RE	1 2
E_SCL	3 3	RESET_BUF	1 2
E_SDA	3 3	RRST	1 2
E_SDI	3 3	SCL	1 3
E_SDO	3 3	SCL_INT	1 2 2
E_SEL0	3 3	SDA	1 3
E_SEL1	3 3	SDAEN	1 2
E_SEL2	3 3	SDA_INT	1 2 2
E_SEL3	3 3	SEL0	1 3
E_SPK+	3 3	SEL1	1 3

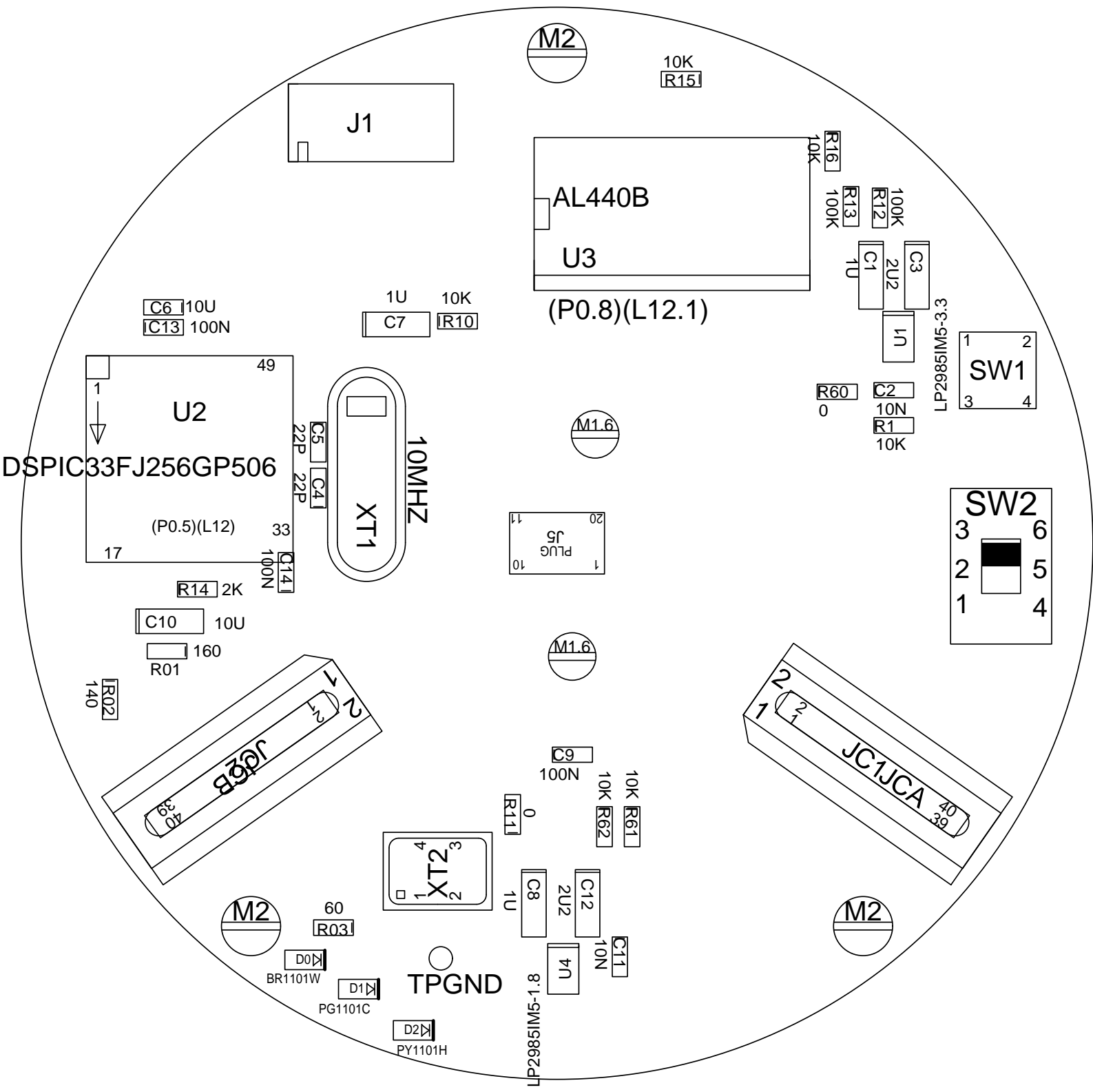


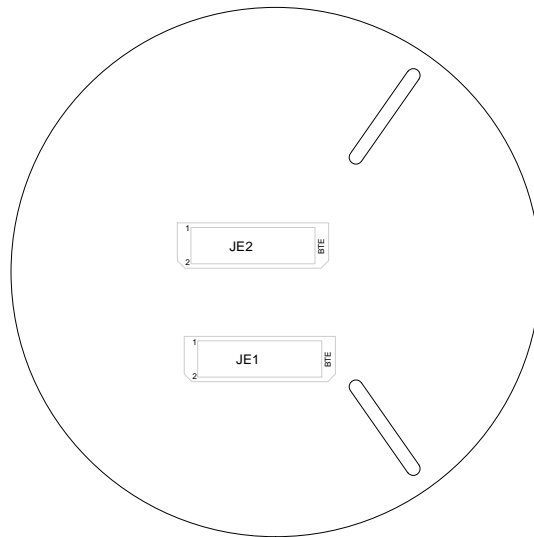
TITRE:PUCKOMINCAMERA_B

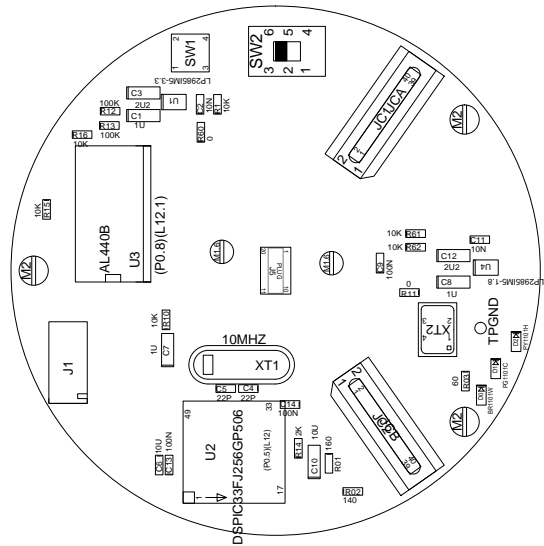
LABORATOIRE:STI-LIS
ENGINEER:A.Klaptocz

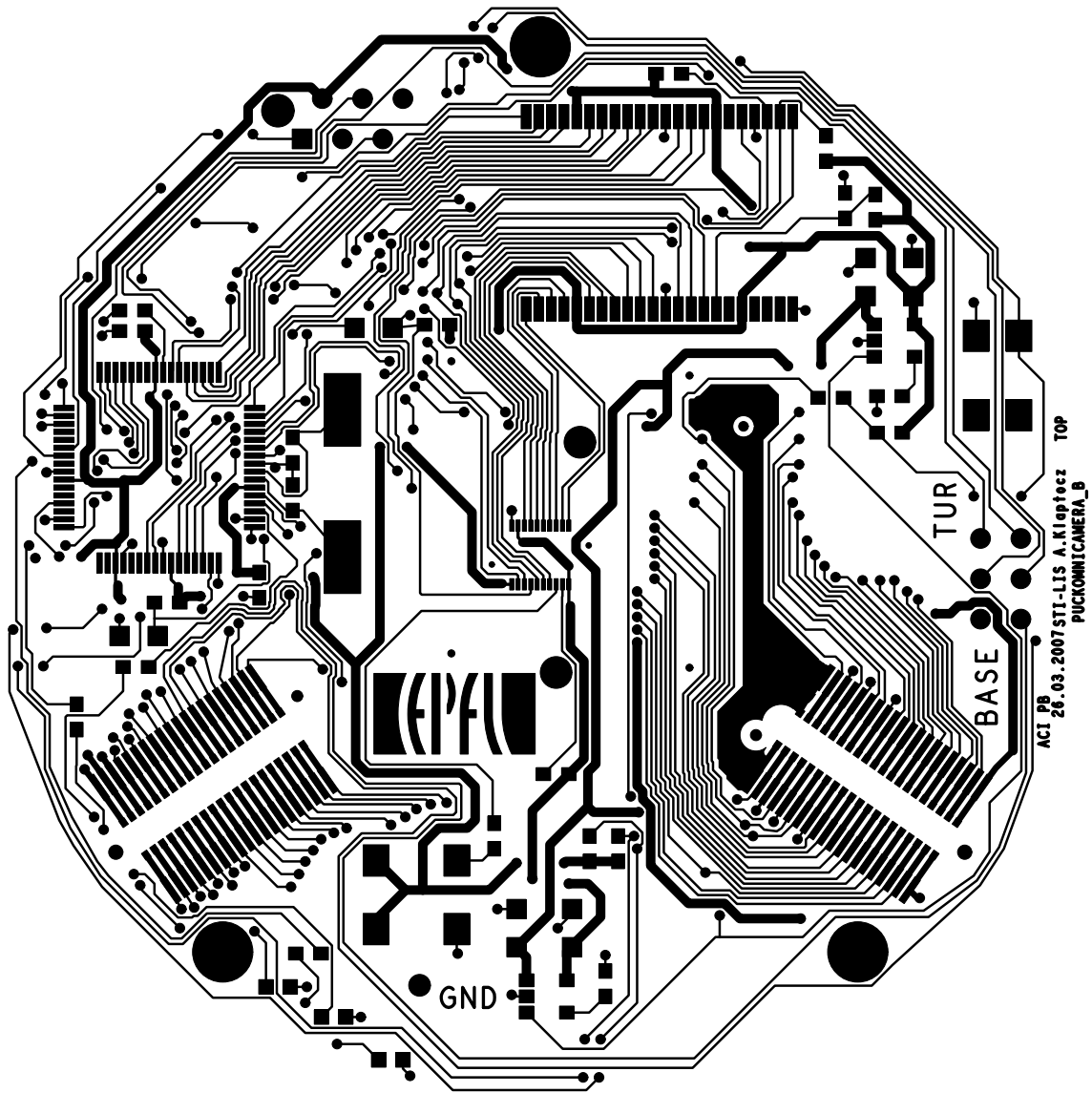
DATE:16.06.2005
EPFL-ACORT-PB

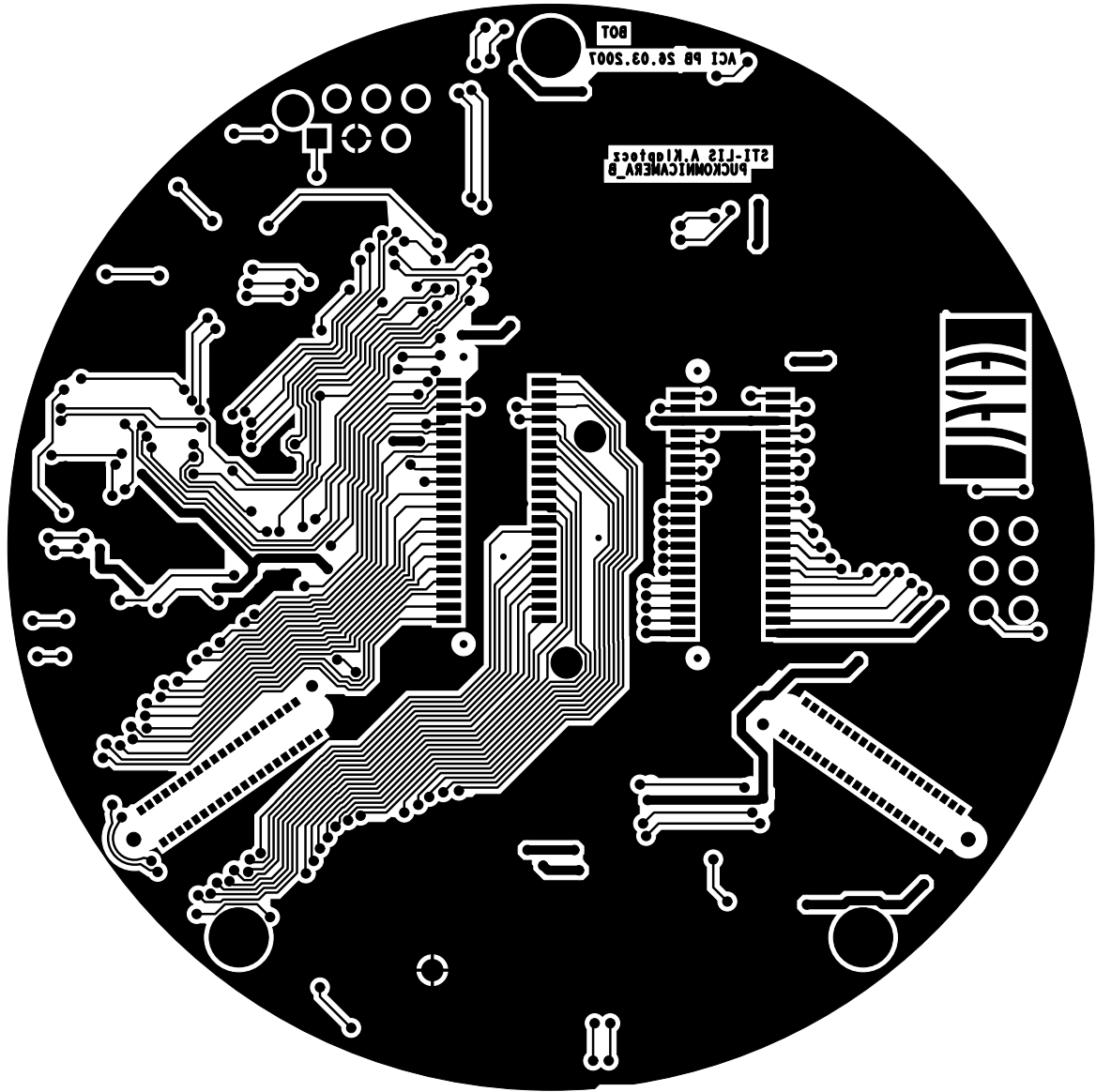


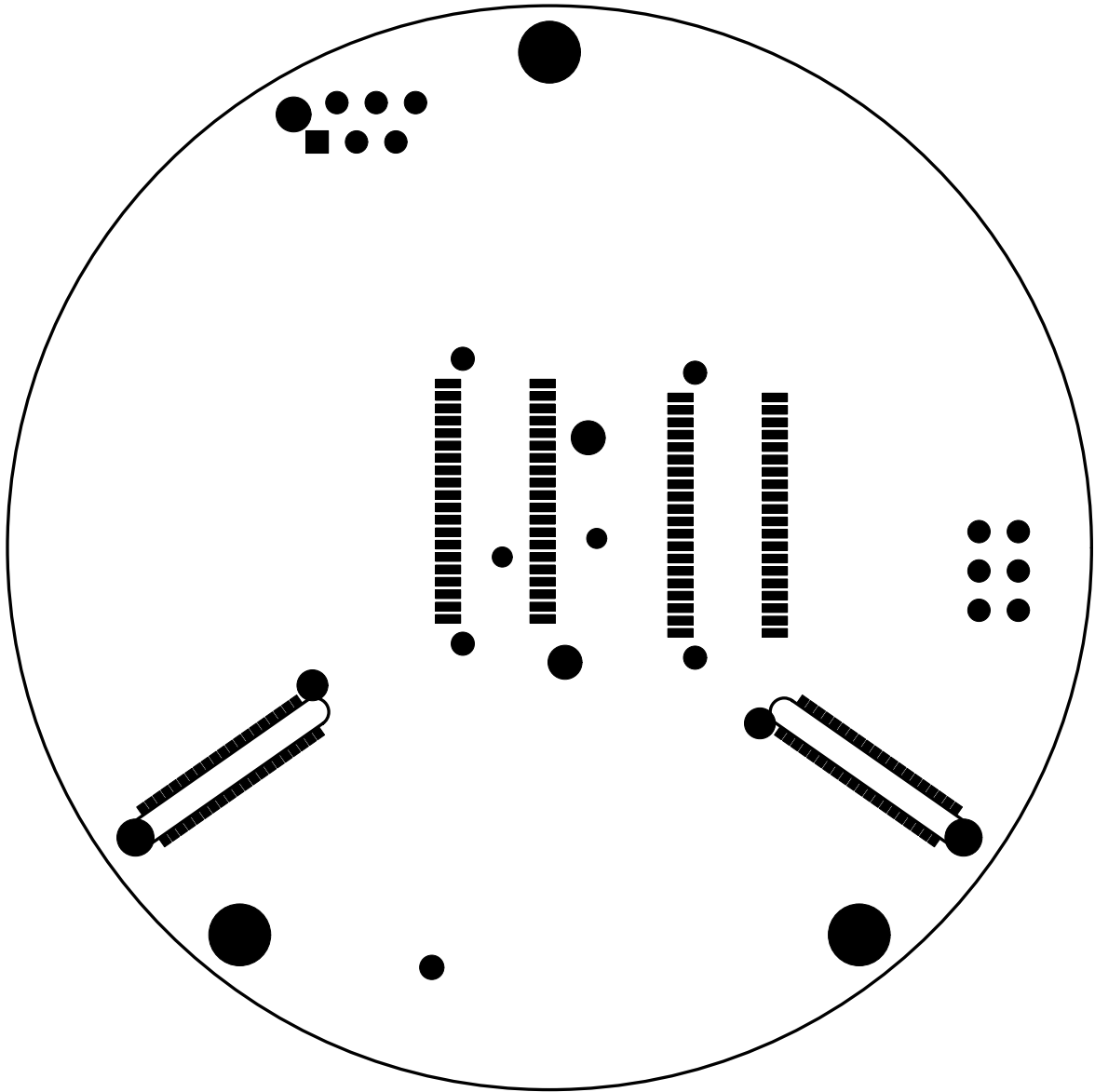


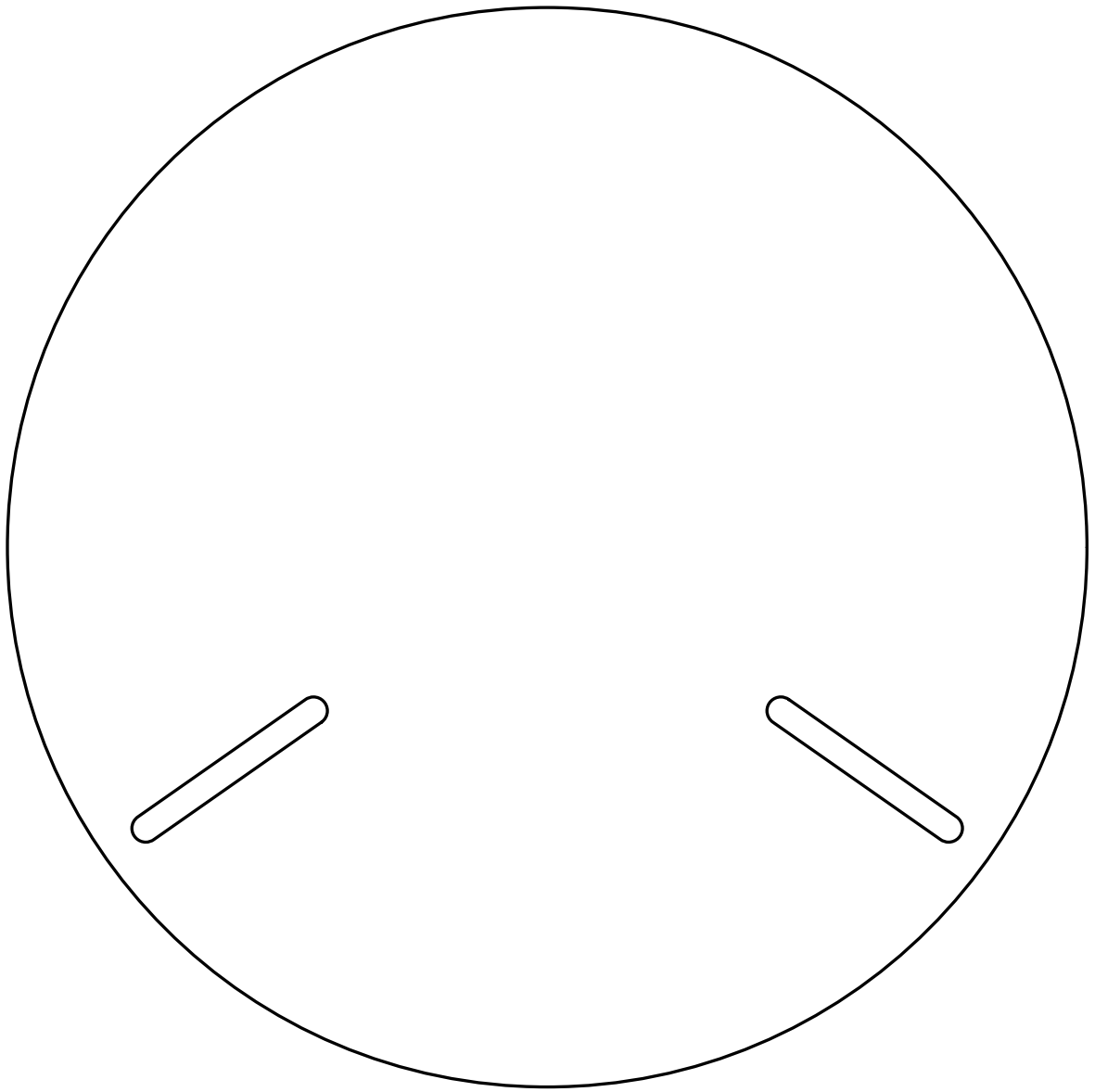












Component Report PUCKOMNICAMERA_C

puckomnicamera_gloss

Tue Mar 27 11:00:43 MET DST 2007

Ref Des	Device Type	Value	Package Type	x	y	ang	Mir	Remark
C1	0805	1U	0805	20.500	17.500	0.000	NO	
C2	0603	10N	0603	22.000	10.000	90.000	NO	
C3	0805	2U2	0805	23.500	17.500	0.000	NO	
C4	0603	22P	0603	-15.600	3.600	180.000	NO	
C5	0603	22P	0603	-15.600	6.600	0.000	NO	
C6	0603	10U	0603	-25.700	15.400	270.000	NO	
C7	0805	1U	0805	-10.500	14.300	90.000	NO	
C8	0805	1U	0805	-1.500	-23.500	0.000	NO	
C9	0603	100N	0603	1.000	-13.800	90.000	NO	
C10	0805	10U	0805	-25.300	-5.100	90.000	NO	
C11	0603	10N	0603	4.100	-27.000	0.000	NO	
C12	0805	2U2	0805	2.000	-23.500	0.000	NO	
C13	0603	100N	0603	-25.700	14.100	90.000	NO	
C14	0603	100N	0603	-17.700	-1.900	180.000	NO	
D0	BR1101H	BR1101W	SMDLED_MINI	-16.513	-27.200	270.000	NO	
D1	PG1101H	PG1101C	SMDLED_MINI	-13.013	-29.100	270.000	NO	
D2	PY1101H	PY1101H	SMDLED_MINI	-9.413	-31.800	270.000	NO	
J1	CO6		MM6	-15.000	26.200	0.000	NO	
J5	CO20		ELCO5602M20	0.000	0.000	180.000	NO	
JC1	CO40		MEC6_40_LOCK	20.589	-14.416	325.000	NO	
JC2	CO40		MEC6_40_LOCK	-20.589	-14.416	215.000	NO	
JCA	CO40		EDGE40_VERTICAL	20.589	-14.416	325.000	NO	
JCB	CO40		EDGE40_VERTICAL	-20.590	-14.417	215.000	NO	
JE1	CO40		SAMBTE40_SMD_08MM	11.500	2.100	90.000	YES	
JE2	CO40		SAMBTE40_SMD_08MM	-3.500	3.000	90.000	YES	
R01	R	160	0603	-25.473	-7.056	270.000	NO	
R1	R	10K	0603	22.000	7.700	90.000	NO	
R02	R	140	0603	-29.200	-10.200	0.000	NO	
R03	R	60	0603	-14.600	-25.100	270.000	NO	
R10	R	10K	0603	-6.500	14.500	90.000	NO	
R11	R	0	0603	-2.900	-17.700	180.000	NO	
R12	R	100K	0603	21.100	21.900	0.000	NO	
R13	R	100K	0603	19.200	22.000	0.000	NO	
R14	R	2K	0603	-23.500	-3.000	90.000	NO	
R15	R	10K	0603	8.100	30.300	270.000	NO	
R16	R	10K	0603	18.000	25.600	0.000	NO	
R60	R	0	0603	18.300	9.900	90.000	NO	
R61	R	10K	0603	4.900	-18.500	0.000	NO	
R62	R	10K	0603	3.100	-18.500	0.000	NO	
SW1	SWPOU		POUSMD4	28.800	11.300	0.000	NO	
SW2	SWCOM		SWGLIS2_MINI	29.000	-1.500	0.000	NO	
TPGND	TP		TP5435	-7.600	-27.100	0.000	NO	
U1	LP2985IM5	LP2985IM5-3.3	SOT23_5G	22.300	13.500	0.000	NO	
U2	DSPIC33FJ256GP506		STQFP64	-24.000	5.500	0.000	NO	
U3	AL440B		TSOP44	7.500	21.500	90.000	NO	
U4	LP2985IM5	LP2985IM5-1.8	SOT23_5G	0.400	-27.800	0.000	NO	
V1	VIS_METAL		VIS1_6	2.500	7.100	0.000	NO	
V2	VIS_METAL		VIS1_6	1.000	-7.400	0.000	NO	
XT1	XTAL	10MHZ	HC49US	-12.450	4.500	270.000	NO	
XT2	VX3W		HXO4	-7.800	-21.400	90.000	NO	

Total Component count 50

BOM Report PUCKOMNICAMERA_C

puckomnicamera_gloss

Tue Mar 27 11:00:44 MET DST 2007

Device	Package	Value	Nb	Reference Designators			Remark
0603-100N	0603	100N	3	C9	C13	C14	
0603-10N	0603	10N	2	C2	C11		
0603-10U	0603	10U	1	C6			
0603-22P	0603	22P	2	C4	C5		
0805-10U	0805	10U	1	C10			
0805-1U	0805	1U	3	C1	C7	C8	
0805-2U2	0805	2U2	2	C3	C12		
AL440B	TSOP44		1	U3			
BR1101H-W	SMDLED_MINI	BR1101W	1	D0			
CO20-ELCO5602M20	ELCO5602M20		1	J5			
CO40-EDGE40_VERTICAL	EDGE40_VERTICAL		2	JCA	JCB		
CO40-MEC6_40_LOCK	MEC6_40_LOCK		2	JC1	JC2		
CO40-SAMBTE40_SMD	SAMBTE40_SMD_08MM		2	JE1	JE2		
CO6-MM6	MM6		1	J1			
DSPIC33FJ256GP506	STQFP64		1	U2			
LP2985IM5-1.8	SOT23_5G	LP2985IM5-1.81	1	U4			
LP2985IM5-3.3	SOT23_5G	LP2985IM5-3.31	1	U1			
PG1101H	SMDLED_MINI	PG1101C	1	D1			
PY1101H	SMDLED_MINI	PY1101H	1	D2			
R-0603-0	0603	0	2	R11	R60		
R-0603-100K	0603	100K	2	R12	R13		
R-0603-10K	0603	10K	6	R1	R10	R15	R16
				R62			
R-0603-140	0603	140	1	R02			
R-0603-160	0603	160	1	R01			
R-0603-2K	0603	2K	1	R14			
R-0603-60	0603	60	1	R03			
SWCOM-SWGLIS2_MINI	SWGLIS2_MINI		1	SW2			
SWPOU-POUSMD4-BOURNS	POUSMD4		1	SW1			
TP-2	TP5435		1	TPGND			
VIS_METAL-M1.6	VIS1_6		2	V1	V2		
VX3W	HXO4		1	XT2			
XTAL-HC49US-10MHZ	HC49US	10MHZ	1	XT1			

Total Component count 50

NC Pins Report PUCKOMNICAMERA_C

puckomnicamera_gloss

Tue Mar 27 11:00:44 MET DST 2007

Ref Des	Device	Nb	Not Connected Pins										Remark
J1	CO6-MM6	1	6										
U2	DSPIC33FJ256GP506	13	4	5	8	11	12	13	14	17	18	21	
			22	58	59								
U3	AL440B	1	17										
V1	VIS_METAL-M1.6	1	1										
V2	VIS_METAL-M1.6	1	1										

Total count 17

Single Node Nets Report PUCKOMNICAMERA_C

puckomnicamera_gloss

Tue Mar 27 11:00:46 MET DST 2007

Netname	Node	Device	Remark
---------	------	--------	--------

Total Nets count 0