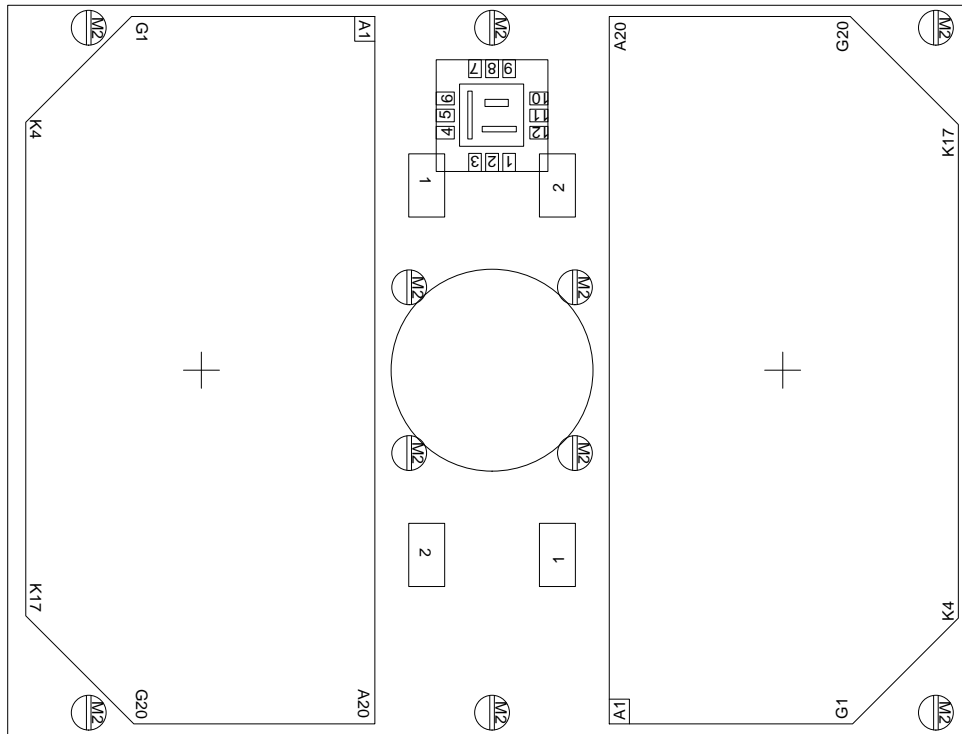


# PLUSXPANEL

CTS-GE F.Jordan  
 Phone: 35617  
 Fri Mar 7 09:58:59 MET 2008

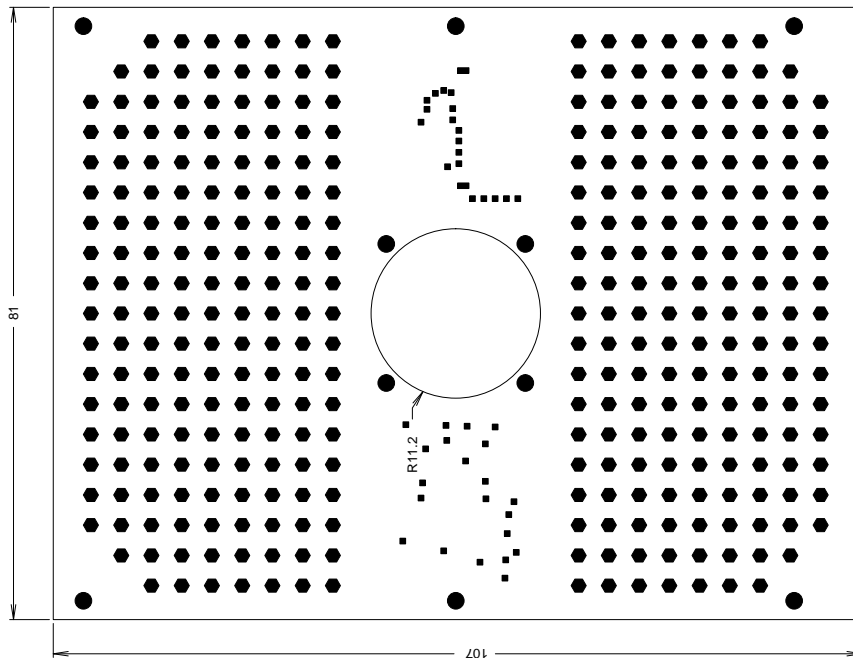
MFG\_DATE: Undefined  
 QUANTITY: 1  
 SOLDERMASK: mbot  
 MATERIAL: FR4 : 0.8 mm



CONTENTS	PAGE
Drill	2
Drill_Blind_Vias	3
Drill_Buried_Vias	4
Etch	5
OutDetail_Bottom	6
OutDetail_Top	7
Outline_Top	8
Gerber_ptop	9
Gerber_top	10
Gerber_top1	11
Gerber_top2	12
Gerber_bot2	13
Gerber_bot1	14
Gerber_bot	15

CONTENTS	PAGE
Gerber_mbot	16
Gerber_pbot	17
Gerber_cont	18
Component Report	19
BOM Report	20
NC-Pins Report	21
Power-Pins Report	22
Single Node Nets	23

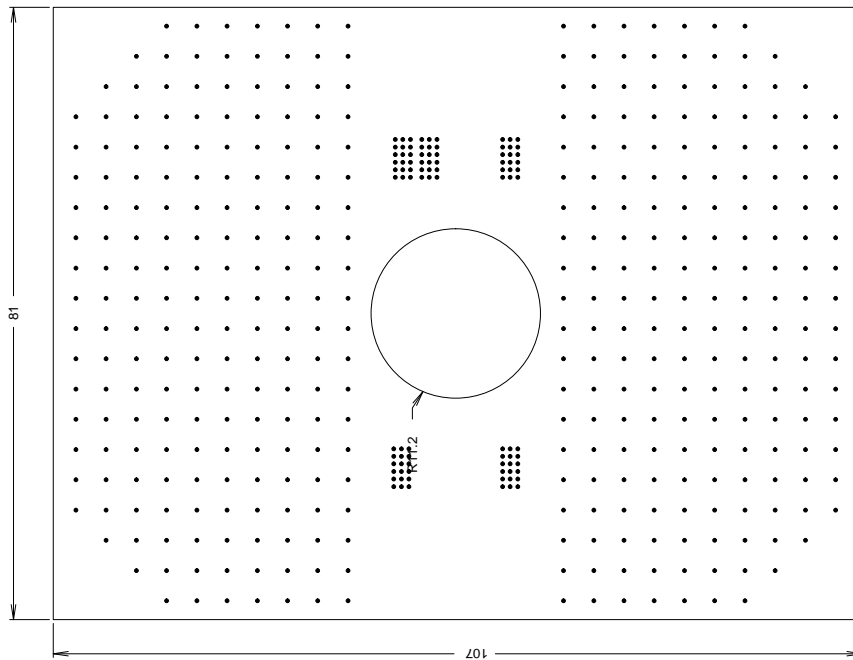
DRILL CHART			
FIGURE	SIZE	PLATED	QTY
•	0.401	PLATED	39
■	1.6	PLATED	2
●	2.2	PLATED	10
●	2.0	NOT PLATED	330



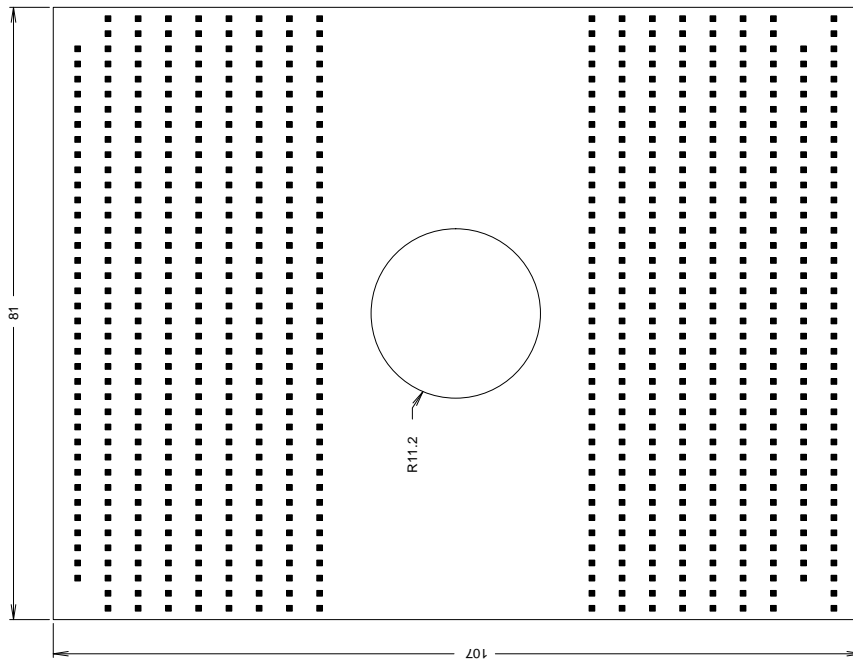
TITRE:PLUSXPANEL

LABORATOIRE:STI-CTS-GE  
ENGINEER:F.Jordan

DATE:14.1.2008  
EPFL-ACORT-PB



DRILL CHART TOP-TOP1			
FIGURE	SIZE	PLATED	QTY
.	0.2	PLATED	466

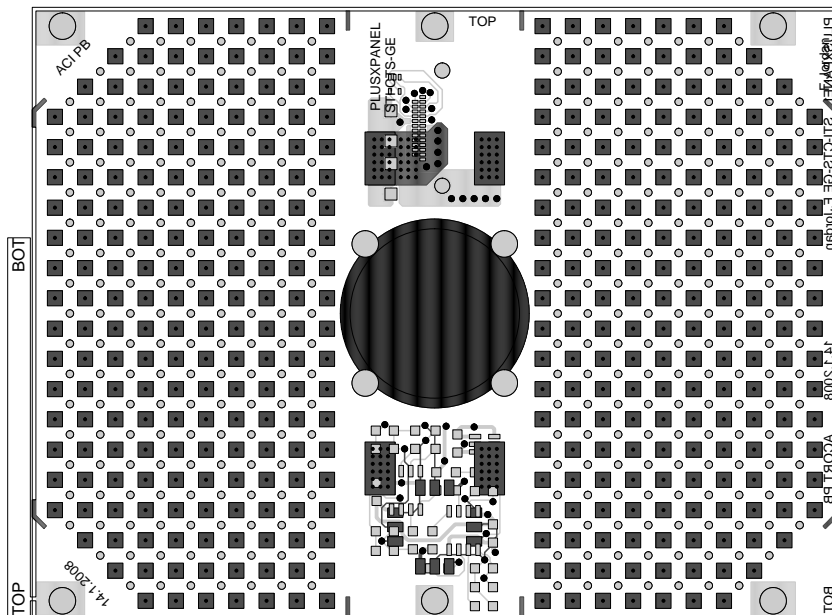


DRILL CHART TOP1-BOT1			
FIGURE	SIZE	PLATED	QTY
•	0.401	PLATED	712

TITRE:PLUSXPANEL

LABORATOIRE:STI-CTS-GE  
ENGINEER:F.Jordan

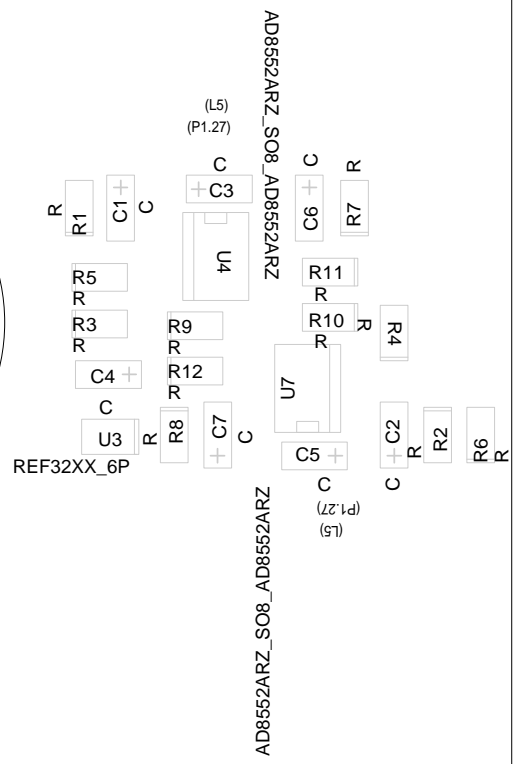
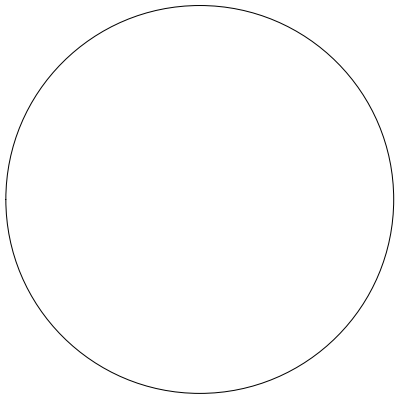
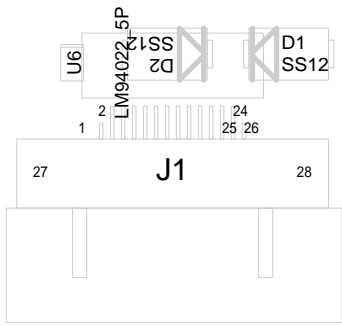
DATE:14.1.2008  
EPFL-ACORT-PB

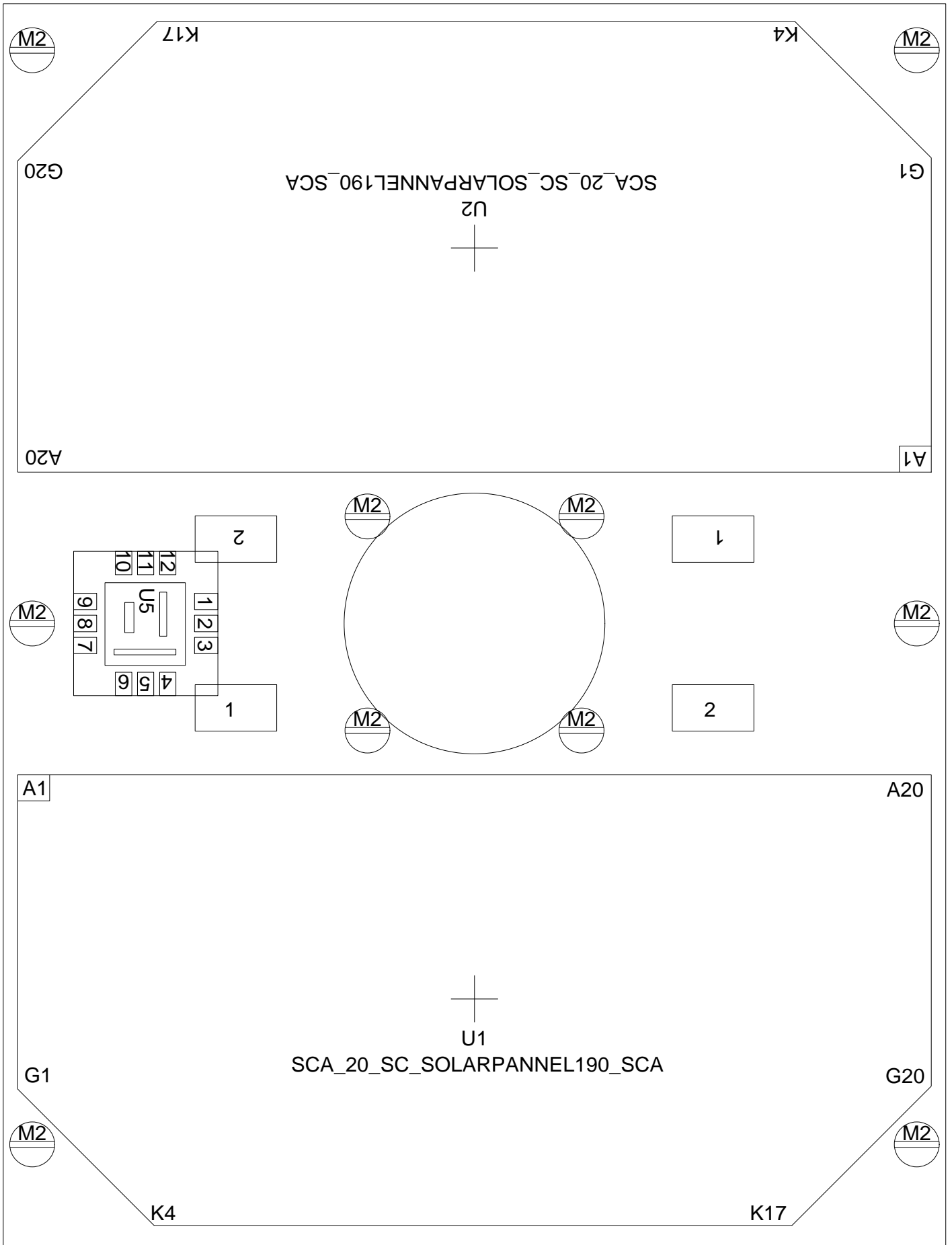


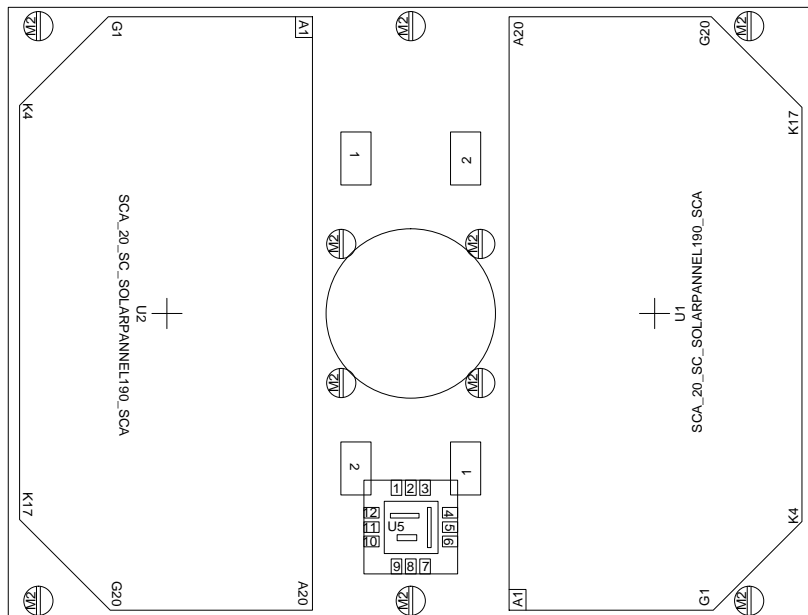
TITRE:PLUSXPANEL

LABORATOIRE:STI-CTS-GE  
ENGINEER:F.Jordan

DATE:14.1.2008  
EPFL-ACORT-PB





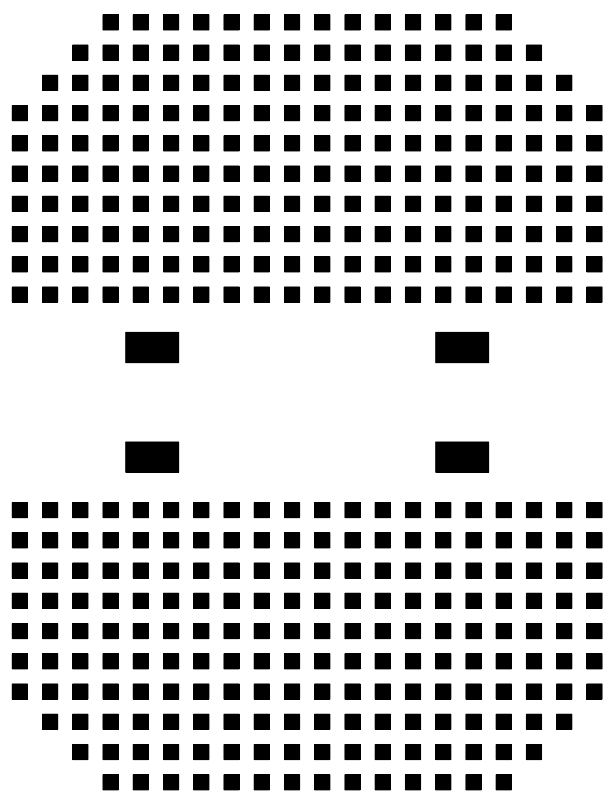


TITRE:PLUSXPANEL

LABORATOIRE:STI-CTS-GE  
ENGINEER:F.Jordan

DATE:14.1.2008  
EPFL-ACORT-PB

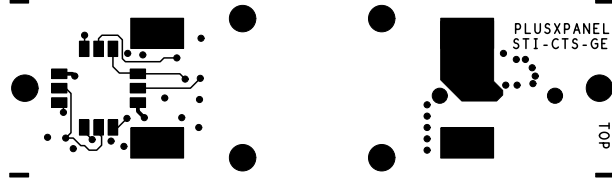
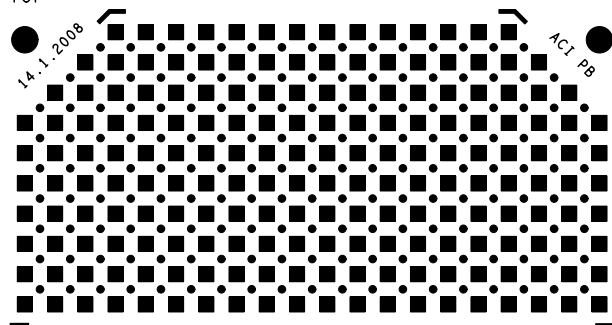




TOP

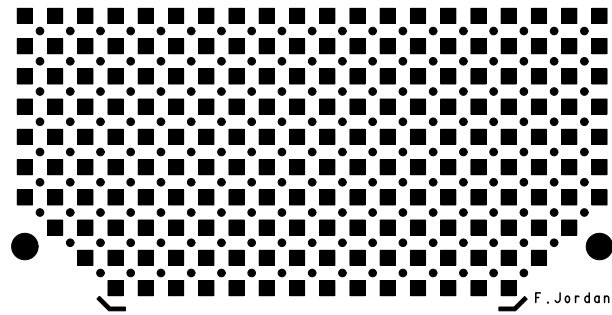
14.1.2008

ACI PB



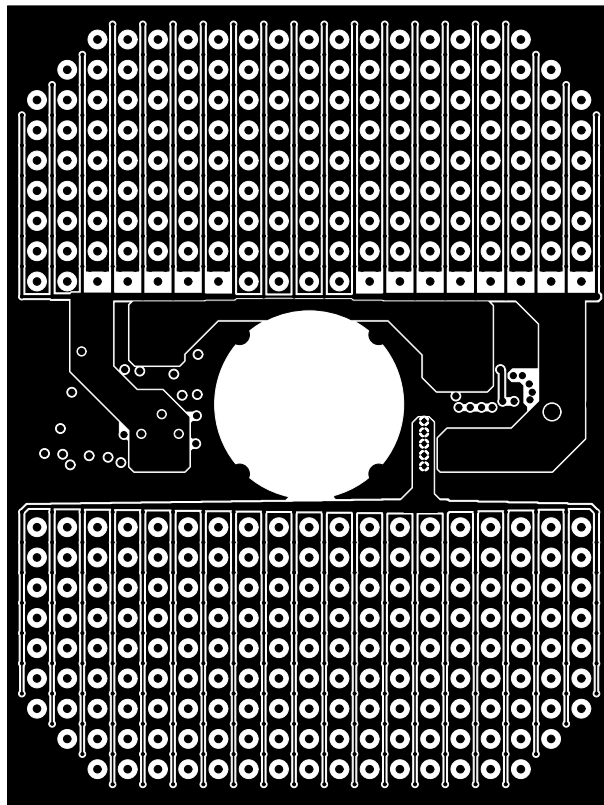
PLUSXPANEL  
STI-CTS-GE

TOP

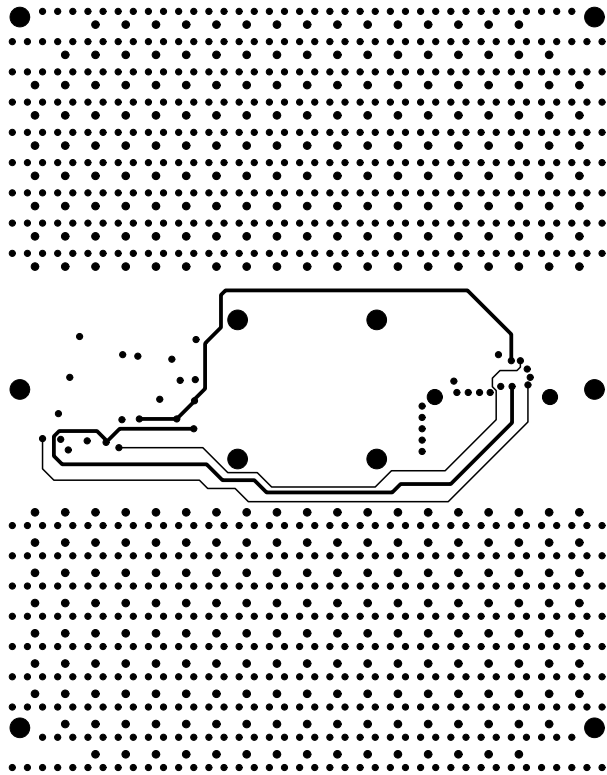


F. Jordan

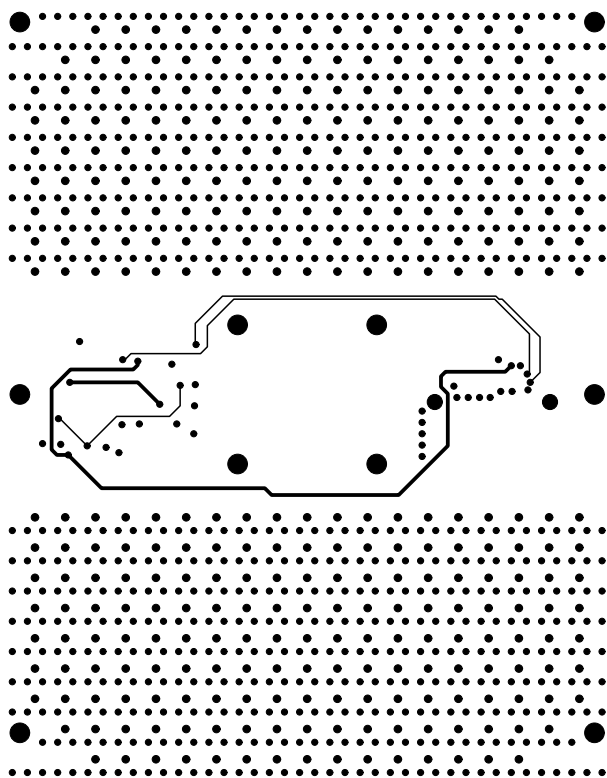
TOP 1



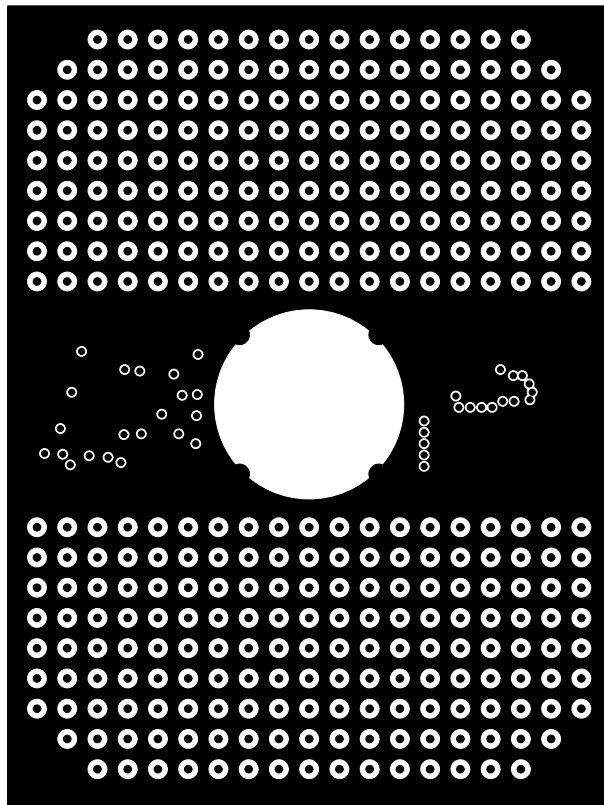
TOP2



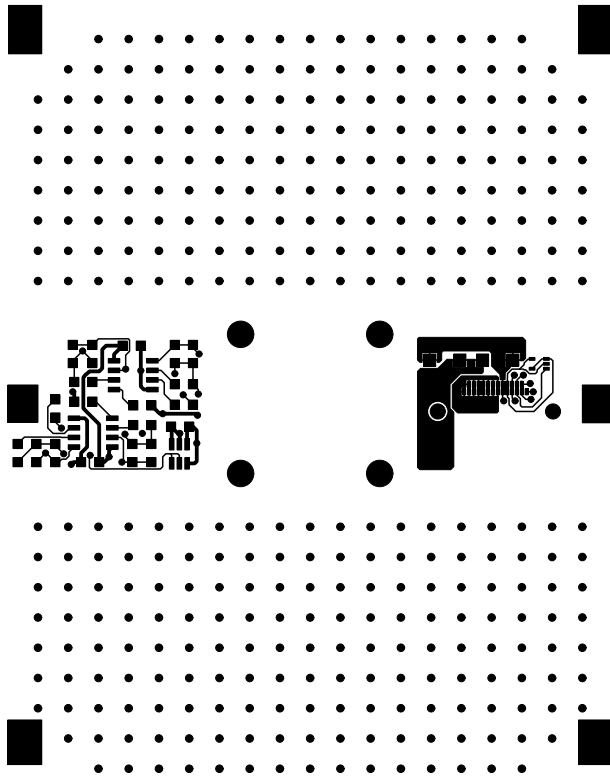
BOT2



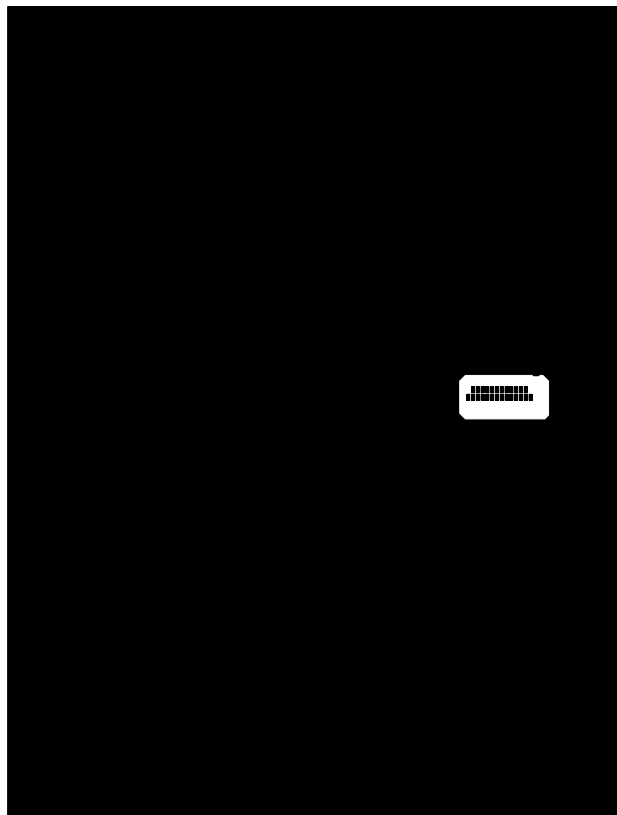
BOT1



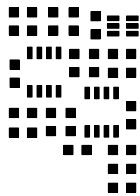
BOT

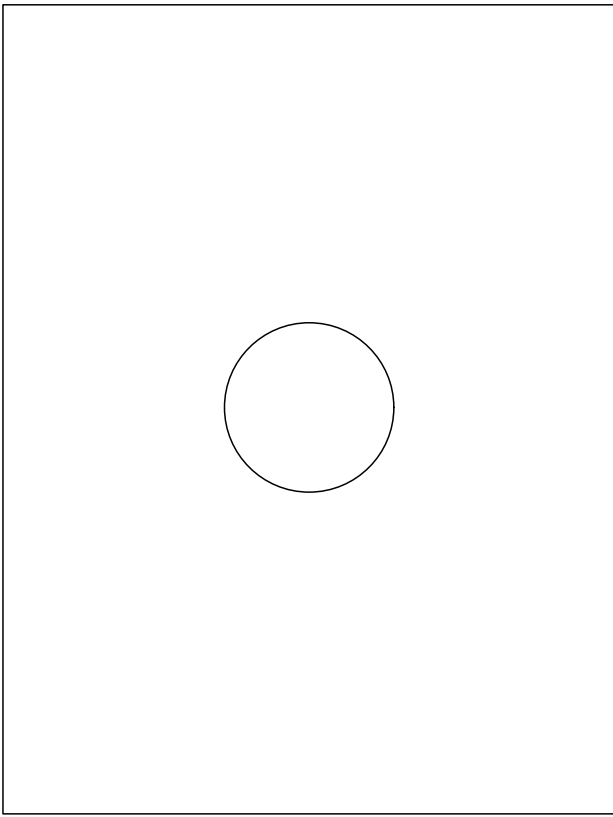


PLUXPANEL 2T1-CT2-GE F. Jordan 14.1.2008 ACORT PB BOT









# Component Report PLUSXPANEL

plusxpanel\_gloss

Fri Mar 7 09:59:00 MET 2008

Ref Des	Device Type	Value	Package Type	x	y	ang	Mir	Remark
C1	C_CP_0805_C	C	CP_0805	-17.900	6.600	180.000	YES	
C2	C_CP_0805_C	C	CP_0805	-33.700	-6.500	0.000	YES	
C3	C_CP_0805_C	C	CP_0805	-23.600	7.700	90.000	YES	
C4	C_CP_0805_C	C	CP_0805	-17.200	-3.000	270.000	YES	
C5	C_CP_0805_C	C	CP_0805	-29.100	-7.700	270.000	YES	
C6	C_CP_0805_C	C	CP_0805	-28.800	6.600	180.000	YES	
C7	C_CP_0805_C	C	CP_0805	-23.500	-6.500	0.000	YES	
D1	DIODE_SCHOTTKES	DO2	DO214C	17.800	5.800	270.000	YES	
D2	DIODE_SCHOTTKES	DO2	DO214C	24.800	5.800	90.000	YES	
J1	CON26_SC_SMD	SC_SMD28	SC_SMD28	24.500	3.000	0.000	YES	
R1	R_0805_R	R	0805	-15.500	6.600	180.000	YES	
R2	R_0805_R	R	0805	-36.200	-6.500	0.000	YES	
R3	R_0805_R	R	0805	-16.700	-0.100	270.000	YES	
R4	R_0805_R	R	0805	-33.700	-0.600	180.000	YES	
R5	R_0805_R	R	0805	-16.700	2.600	270.000	YES	
R6	R_0805_R	R	0805	-38.700	-6.500	180.000	YES	
R7	R_0805_R	R	0805	-31.400	6.600	180.000	YES	
R8	R_0805_R	R	0805	-21.000	-6.500	0.000	YES	
R9	R_0805_R	R	0805	-22.200	-0.200	270.000	YES	
R10	R_0805_R	R	0805	-30.000	0.300	90.000	YES	
R11	R_0805_R	R	0805	-30.000	2.900	90.000	YES	
R12	R_0805_R	R	0805	-22.200	-2.800	270.000	YES	
TP1	VISM2_TROU2_2	VISM2_TROU2_2	VIS2	-38.000	49.250	0.000	NO	
TP2	VISM2_TROU2_2	VISM2_TROU2_2	VIS2	38.000	0.000	0.000	NO	
TP3	VISM2_TROU2_2	VISM2_TROU2_2	VIS2	38.000	-44.750	0.000	NO	
TP4	VISM2_TROU2_2	VISM2_TROU2_2	VIS2	-38.000	-44.750	0.000	NO	
TP5	VISM2_TROU2_2	VISM2_TROU2_2	VIS2	-38.000	0.000	0.000	NO	
TP6	VISM2_TROU2_2	VISM2_TROU2_2	VIS2	-9.200	9.200	0.000	NO	
TP7	VISM2_TROU2_2	VISM2_TROU2_2	VIS2	9.200	9.200	0.000	NO	
TP8	VISM2_TROU2_2	VISM2_TROU2_2	VIS2	9.200	-9.200	0.000	NO	
TP9	VISM2_TROU2_2	VISM2_TROU2_2	VIS2	-9.200	-9.200	0.000	NO	
TP10	VISM2_TROU2_2	VISM2_TROU2_2	VIS2	38.000	49.250	0.000	NO	
U1	SCA_20_SC_SOLARP	SCA_PANNE	SC_SOLARPANEL190	0.000	-32.250	0.000	NO	
U2	SCA_20_SC_SOLARP	SCA_PANNE	SC_SOLARPANEL190	0.000	32.250	180.000	NO	
U3	REF32XX_1_SOT23	REF32XX_6P	SOT23_6	-17.300	-6.600	90.000	YES	
U4	AD8552ARZ_SO8	AD8552ARZ	SO8	-23.400	3.800	0.000	YES	
U5	SUNSENSOR_DTUS	SUNSENSOR_DTUS	DTUS	-28.250	0.000	270.000	NO	
U6	LM94022_5P_SC70	LM94022_5P	SC70_5	30.300	5.300	0.000	YES	
U7	AD8552ARZ_SO8	AD8552ARZ	SO8	-28.700	-3.800	180.000	YES	

Total Component count 39

# BOM Report PLUSXPANEL

plusxpanel\_gloss

Fri Mar 7 09:59:01 MET 2008

Device	Package	Value	Nb	Reference Designators					Remark	
AD8552ARZ_SO8_AD8552	SO8	AD8552ARZ	2	U4	U7					
CON26_SC_SMD28_CON26	SC_SMD28	CON26	1	J1						
C_CP_0805_C	CP_0805	C	7	C1	C2	C3	C4	C5		
				C6	C7					
DIODE_SCHOTTKY_0_DO2	DO214AC	SS12	2	D1	D2					
LM94022_5P_SC70_5_LM	SC70_5	LM94022_5P	1	U6						
REF32XX_1_SOT23_6_RE	SOT23_6	REF32XX_6P	1	U3						
R_0805_R	0805	R	12	R1	R2	R3	R4	R5		
				R6	R7	R8	R9	R10		
				R11	R12					
SCA_20_SC_SOLARPANNE	SC_SOLARPANNE	SCA	2	U1	U2					
SUNSENSOR_DTU_DIP12_	DTUSS	SUNSENSOR_DTU	1	U5						
VISM2_TROU2_2_VIS2_V	VIS2	VISM2_TROU2	2	TP1	TP2	TP3	TP4	TP5		
				TP6	TP7	TP8	TP9	TP10		

Total Component count 39

# NC Pins Report PLUSXPANEL

plusxpanel\_gloss

Fri Mar 7 09:59:02 MET 2008

Ref Des	Device	Nb	Not Connected Pins	Remark
0		0		

Total count 0

# Power Pins Report PLUSXPANEL

plusxpanel\_gloss

Fri Mar 7 09:59:03 MET 2008

Ref Des	Device	Name	Power Pins	Remark
J1	CON26_SC_SMD28_CON26	GND	8	
U6	LM94022_5P_SC70_5_LM	GND	2 5	

Total count 2

# Single Node Nets Report PLUSXPANEL

plusxpanel\_gloss

Fri Mar 7 09:59:04 MET 2008

Netname	Node	Device	Remark
---------	------	--------	--------

Total Nets count 0