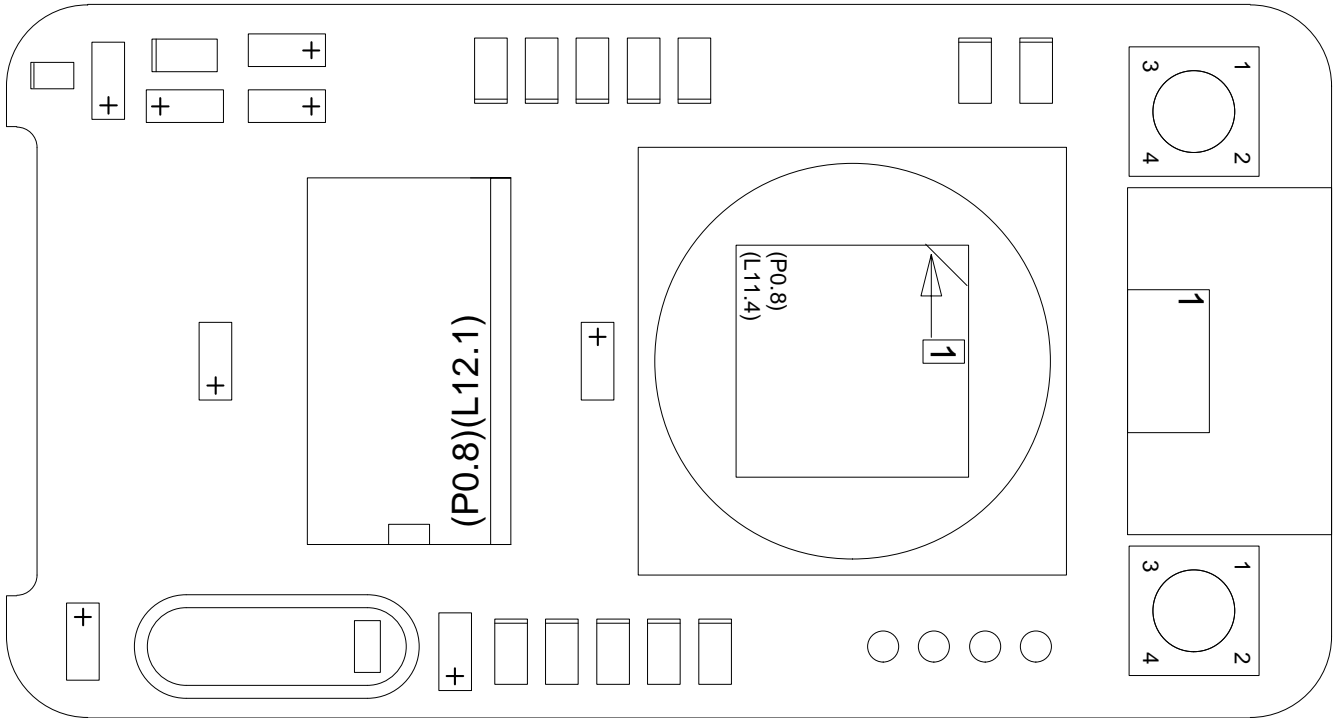


PAYLOAD

CTS-GE F.Jordan
 Phone: 35617
 Mon Jun 16 16:28:53 MET DST 2008

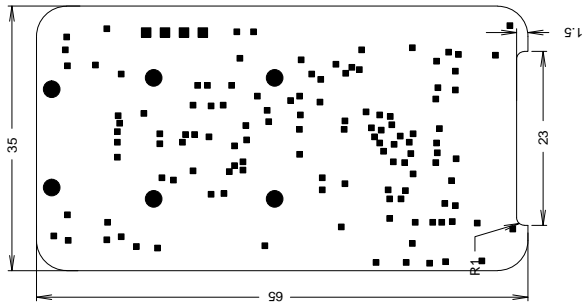
MFG_DATE: Undefined
 QUANTITY: 1
 SOLDERMASK: mtop mbot
 MATERIAL: FR4 : 1.6 mm



CONTENTS	PAGE
Drill	2
Etch	3
OutDetail_Bottom	4
OutDetail_Top	5
Outline_Bottom	6
Outline_Top	7
Gerber_ptop	8
Gerber_mtop	9
Gerber_top	10
Gerber_top1	11
Gerber_top2	12
Gerber_bot2	13
Gerber_bot1	14
Gerber_bot	15

CONTENTS	PAGE
Gerber_mbot	16
Gerber_pbot	17
Gerber_cont	18
Component Report	19 - 20
BOM Report	21
NC-Pins Report	22
Power-Pins Report	23
Single Node Nets	24

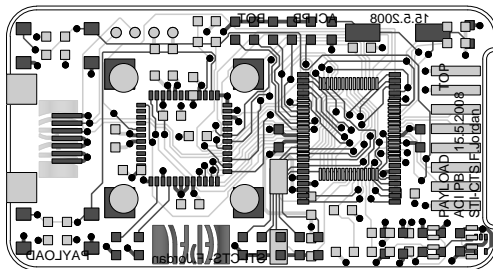
DRILL CHART			
FIGURE	SIZE	PLATED	QTY
•	0.401	PLATED	123
▪	0.889	PLATED	4
●	2.2	PLATED	6



TITRE:PAYLOAD

LABORATOIRE:STI-CTS-GE
ENGINEER:F.Jordan

DATE:15.5.2008
EPFL-ACORT-PB

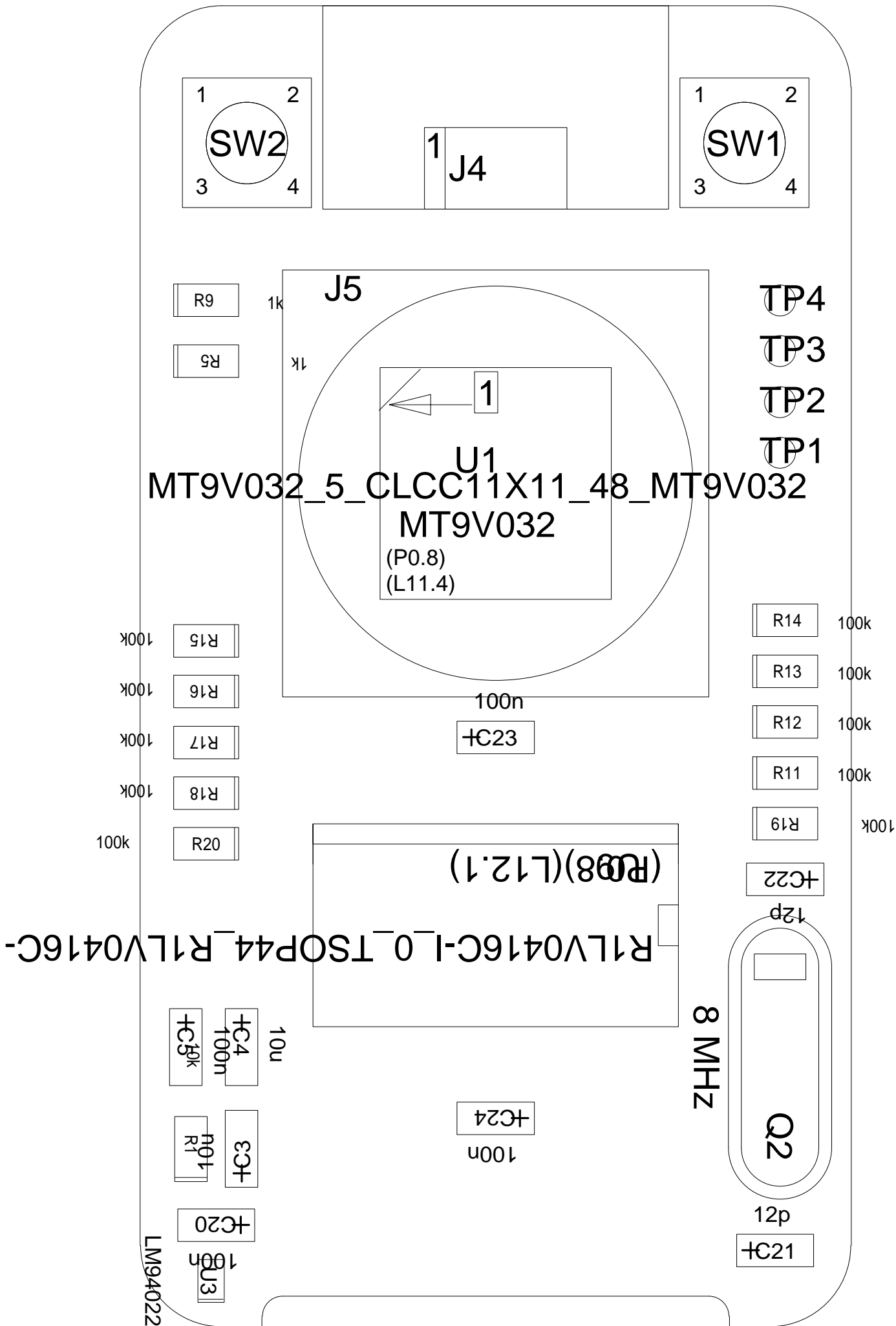


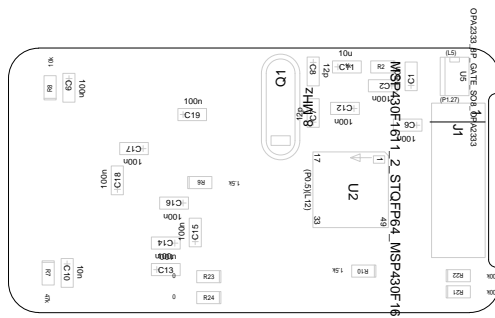
TITRE:PAYLOAD

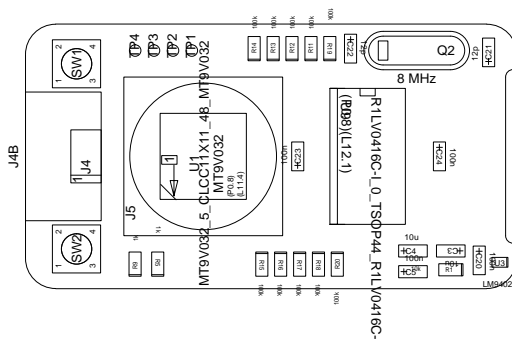
LABORATOIRE:STI-CTS-GE
ENGINEER:F.Jordan

DATE:15.5.2008
EPFL-ACORT-PB

J4B



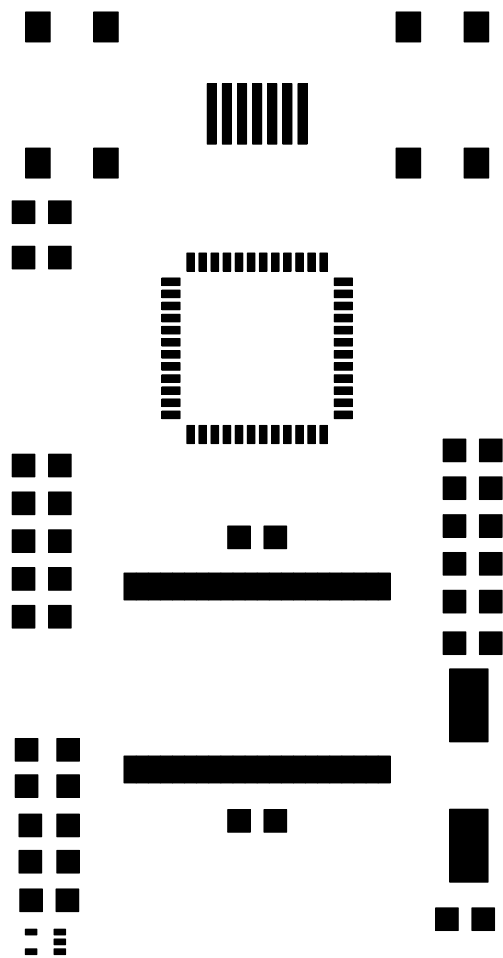


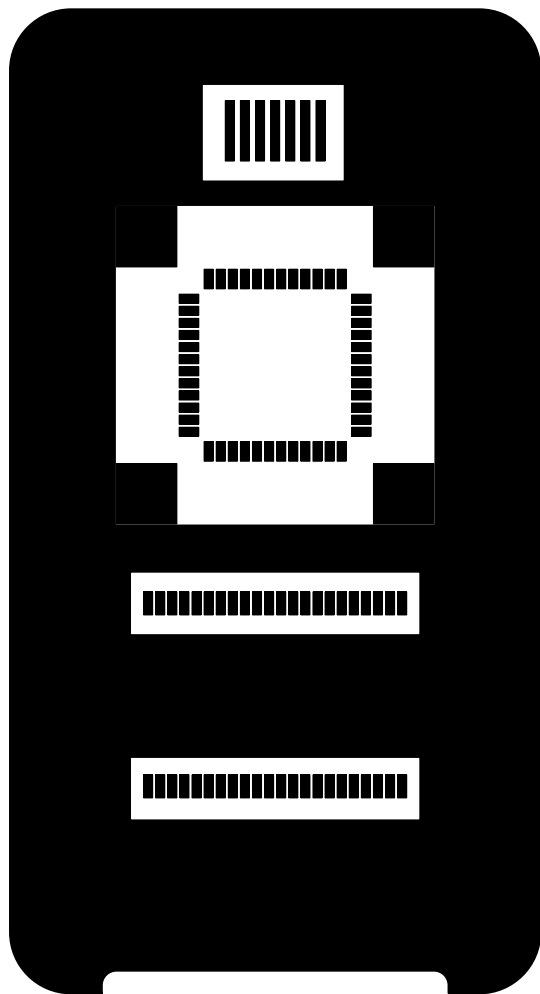


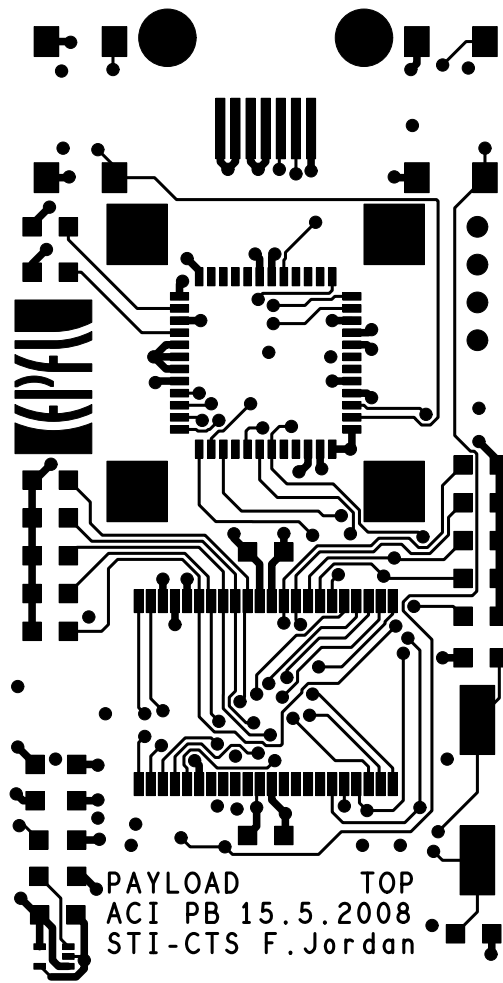
TITRE:PAYLOAD

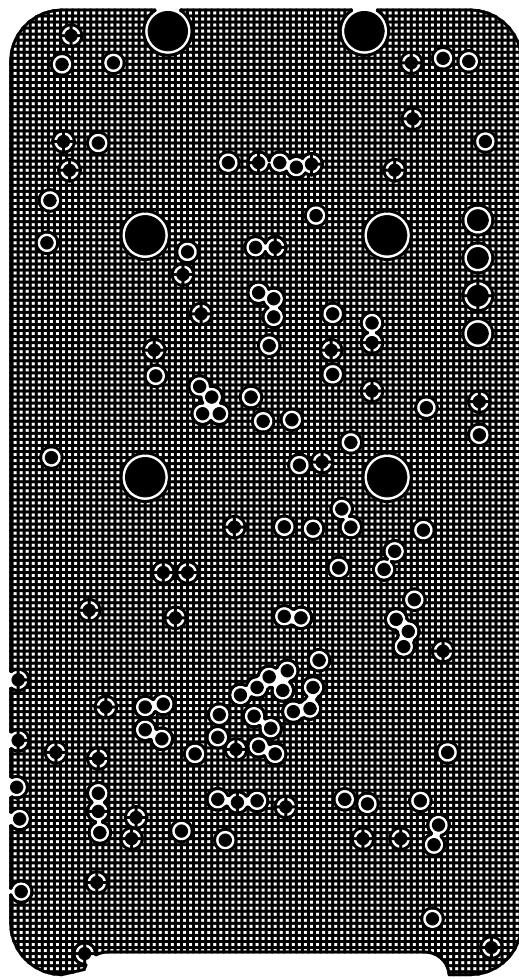
LABORATOIRE:STI-CTS-GE
ENGINEER:F.Jordan

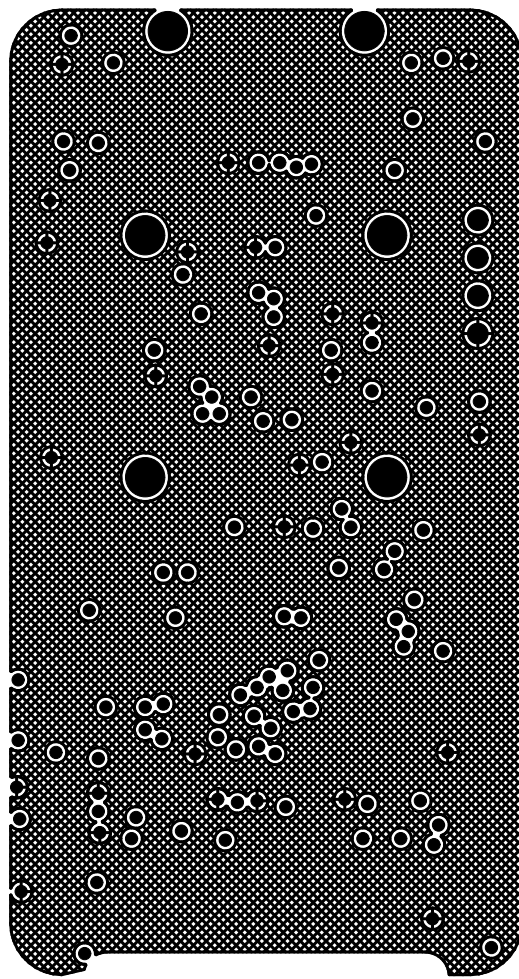
DATE:15.5.2008
EPFL-ACORT-PB

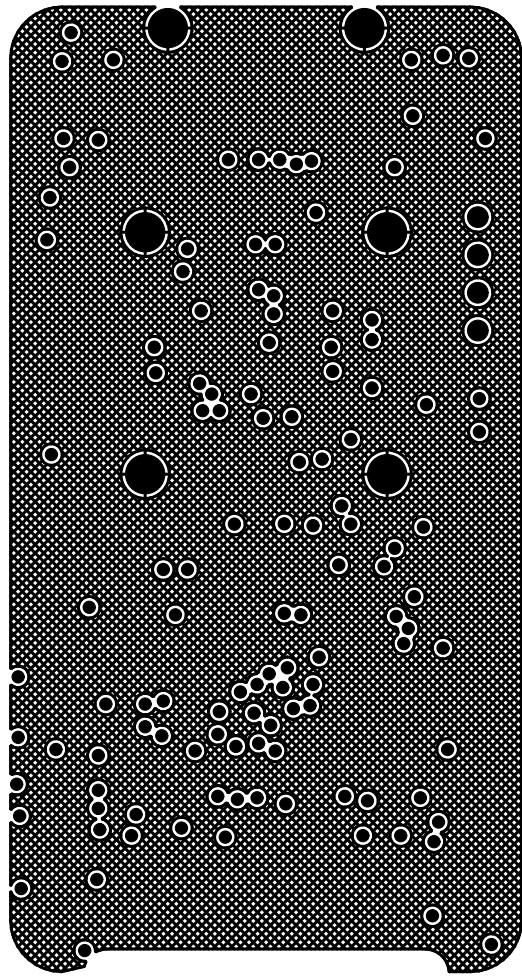


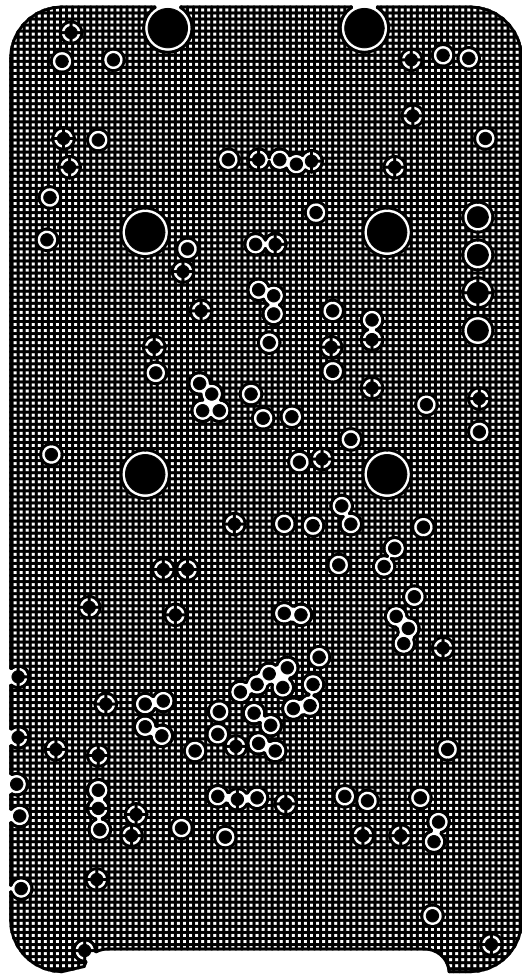


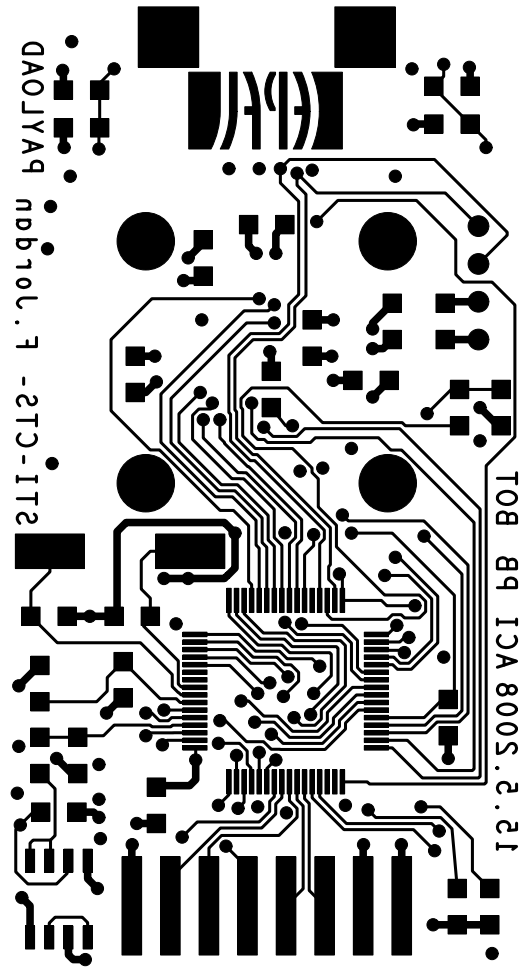


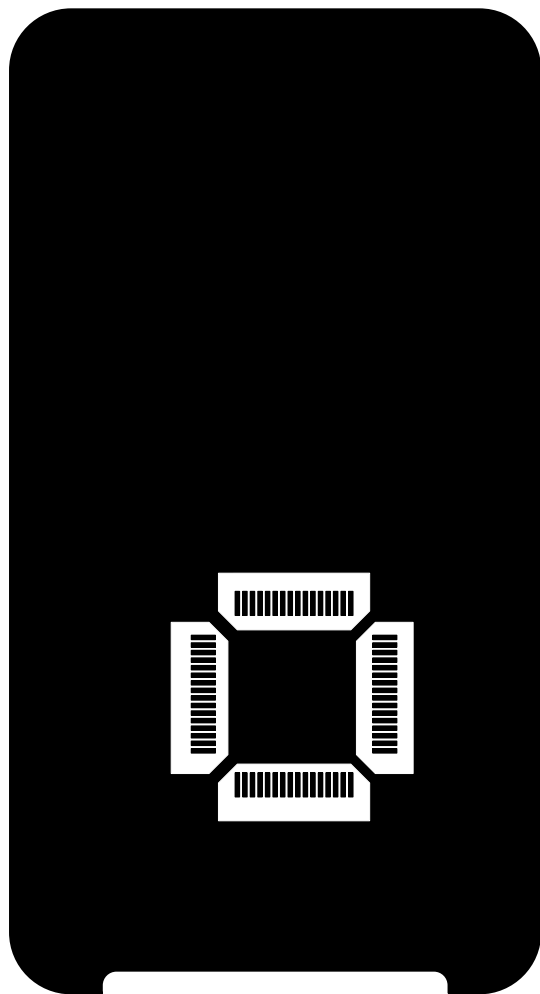


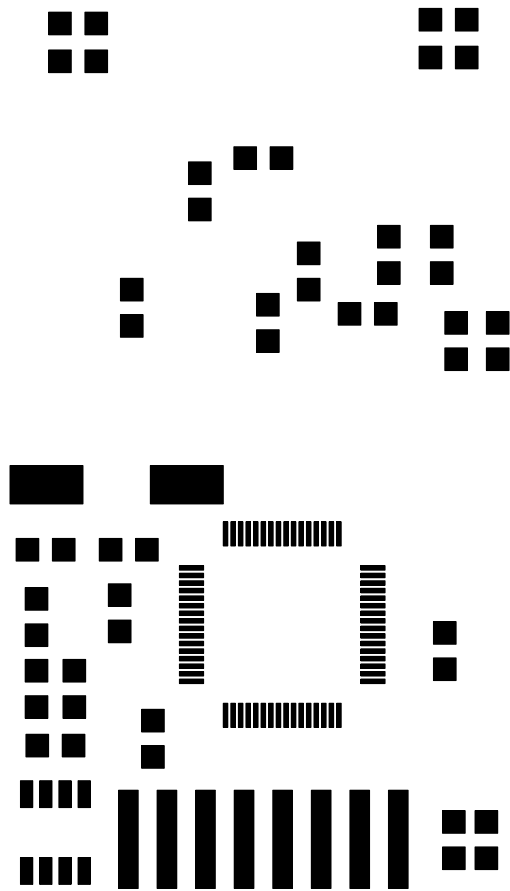


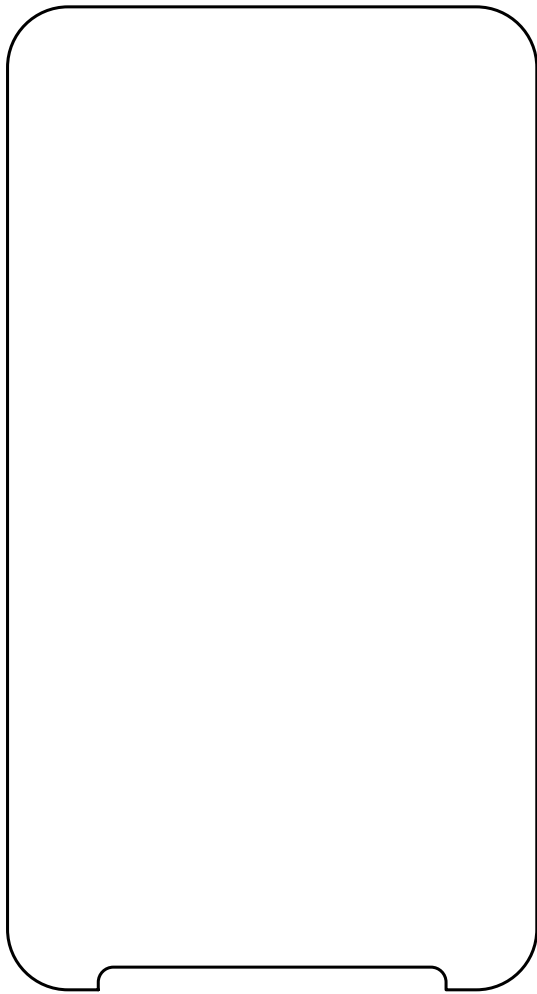












Component Report PAYLOAD

payload_gloss

Mon Jun 16 16:28:54 MET DST 2008

Ref Des	Device Type	Value	Package Type	x	y	ang	Mir	Remark
C1	C_CP_0805_150N	150n	CP_0805	-13.750	11.750	90.000	YES	
C2	C_CP_0805_100N	100n	CP_0805	-12.500	15.500	0.000	YES	
C3	C_CP_0805_10U	10u	CP_0805	-12.500	8.750	0.000	NO	
C4	C_CP_0805_10U	10u	CP_0805	-12.500	13.750	180.000	NO	
C5	C_CP_0805_100N	100n	CP_0805	-15.250	13.750	180.000	NO	
C6	C_CP_0805_100N	100n	CP_0805	-7.300	12.200	0.000	YES	
C7	C_CP_0805_12P	12p	CP_0805	-8.900	24.700	90.000	YES	
C8	C_CP_0805_12P	12p	CP_0805	-14.400	24.700	270.000	YES	
C9	C_CP_0805_100N	100n	CP_0805	-12.250	57.000	270.000	YES	
C10	C_CP_0805_10N	10n	CP_0805	12.250	57.250	270.000	YES	
C11	C_CP_0805_10U	10u	CP_0805	-15.000	20.250	180.000	YES	
C12	C_CP_0805_100N	100n	CP_0805	-9.500	20.500	0.000	YES	
C13	C_CP_0805_100N	100n	CP_0805	11.800	44.200	180.000	YES	
C14	C_CP_0805_100N	100n	CP_0805	8.300	44.200	0.000	YES	
C15	C_CP_0805_100N	100n	CP_0805	6.900	40.300	90.000	YES	
C16	C_CP_0805_100N	100n	CP_0805	3.000	43.100	0.000	YES	
C17	C_CP_0805_100N	100n	CP_0805	-4.200	48.400	0.000	YES	
C18	C_CP_0805_100N	100n	CP_0805	0.000	50.600	90.000	YES	
C19	C_CP_0805_100N	100n	CP_0805	-8.700	40.700	180.000	YES	
C20	C_CP_0805_100N	100n	CP_0805	-13.750	5.000	90.000	NO	
C21	C_CP_0805_12P	12p	CP_0805	13.750	3.750	270.000	NO	
C22	C_CP_0805_12P	12p	CP_0805	14.250	22.000	90.000	NO	
C23	C_CP_0805_100N	100n	CP_0805	0.000	29.000	270.000	NO	
C24	C_CP_0805_100N	100n	CP_0805	0.000	10.250	90.000	NO	
J1	CON8_RIBBON_8_25MM	8_25MM	RIBBON_8_2_55MM	-8.925	5.550	180.000	YES	
J4	CON7_RIBBON_7_1MM	7_1MM	RIBBON_7_1MM	-3.000	57.000	0.000	NO	
J5	CON4_SC_OPTI21X21	SC OPTI21X21	SC_OPTI21X21	0.000	41.500	0.000	NO	
J4B	CON2_SC_CON7_10X17	SC CON7_10X17	SC_CON7_10X17	0.000	65.000	0.000	NO	
Q1	HC49US_TH_2P	HC49US	HC49US	-9.700	29.000	0.000	YES	
Q2	HC49US_TH_2P	HC49US	HC49US	14.000	13.250	270.000	NO	
R1	R_0805_10K	10k	0805	-15.000	8.750	180.000	NO	
R2	R_0805_1K	1k	0805	-15.000	15.500	180.000	YES	
R5	R_0805_1K	1k	0805	-14.250	47.500	90.000	NO	
R6	R_0805_1.5K	1.5k	0805	0.300	39.700	0.000	YES	
R7	R_0805_47K	47k	0805	12.250	59.750	90.000	YES	
R8	R_0805_10K	10k	0805	-12.250	59.500	270.000	YES	
R9	R_0805_1K	1k	0805	-14.250	50.500	90.000	NO	
R10	R_0805_1.5K	1.5k	0805	12.000	18.000	180.000	YES	
R11	R_0805_100K	100k	0805	14.250	27.250	90.000	NO	
R12	R_0805_100K	100k	0805	14.250	29.750	90.000	NO	
R13	R_0805_100K	100k	0805	14.250	32.250	90.000	NO	
R14	R_0805_100K	100k	0805	14.250	34.750	90.000	NO	
R15	R_0805_100K	100k	0805	-14.250	33.750	270.000	NO	
R16	R_0805_100K	100k	0805	-14.250	31.250	270.000	NO	
R17	R_0805_100K	100k	0805	-14.250	28.750	270.000	NO	
R18	R_0805_100K	100k	0805	-14.250	26.250	270.000	NO	
R19	R_0805_100K	100k	0805	14.250	24.750	90.000	NO	
R20	R_0805_100K	100k	0805	-14.250	23.750	270.000	NO	
R21	R_0805_100K	100k	0805	14.750	5.500	0.000	YES	
R22	R_0805_100K	100k	0805	12.600	5.500	0.000	YES	
R23	R_0805_0	0	0805	12.750	38.500	180.000	YES	
R24	R_0805_0	0	0805	15.500	38.500	180.000	YES	
SW1	SW PUSHBUTTON	SW PUSHBUTTON	DPSSMD3	12.250	58.250	0.000	NO	
SW2	SW PUSHBUTTON	SW PUSHBUTTON	DPSSMD3	-12.250	58.250	0.000	NO	
TP1	VISM3_TROU3_3_T5435	T5435	TP5435	14.000	43.000	0.000	NO	
TP2	VISM3_TROU3_3_T5435	T5435	TP5435	14.000	45.500	0.000	NO	
TP3	VISM3_TROU3_3_T5435	T5435	TP5435	14.000	48.000	0.000	NO	
TP4	VISM3_TROU3_3_T5435	T5435	TP5435	14.000	50.500	0.000	NO	

Component Report PAYLOAD

payload_gloss

Mon Jun 16 16:28:54 MET DST 2008

Ref Des	Device Type	Value	Package Type	x	y	ang	Mir	Remark
U1	MT9V032_5_CLCC	MT9V032	CLCC11X11_48	0.000	41.500	0.000	NO	
U2	MSP430F1611_2	MSP430F1611	STQFP64	1.250	19.750	180.000	YES	
U3	LM94022_5P_SC70	LM94022	SC70_5	-14.000	2.250	180.000	NO	
U5	OPA2333_8P_GATE	OPA2333	SO8	-13.750	6.000	90.000	YES	
U9	R1LV0416C	R1LV0416C-I	TSOP44	0.000	19.750	270.000	NO	

Total Component count 63

BOM Report PAYLOAD

payload_gloss

Mon Jun 16 16:28:55 MET DST 2008

Device	Package	Value	Nb	Reference Designators	Remark
CON2_SC_CON7_10X17_V	SC_CON7_10X17	VIS_J4	1	J4B	
CON4_SC_OPTI21X21_VI	SC_OPTI21X21	VIS_Payload	1	J5	
CON7_RIBBON_7_1MM_MB	RIBBON_7_1MM	MB_CONN	1	J4	
CON8_RIBBON_8_2_55MM	RIBBON_8_2_55MM	PRG_CONN	1	J1	
C_CP_0805_100N	CP_0805	100n	15	C2 C5 C6 C9 C12 C13 C14 C15 C16 C17 C18 C19 C20 C23 C24	
C_CP_0805_10N	CP_0805	10n	1	C10	
C_CP_0805_10U	CP_0805	10u	3	C3 C4 C11	
C_CP_0805_12P	CP_0805	12p	4	C7 C8 C21 C22	
C_CP_0805_150N	CP_0805	150n	1	C1	
HC49US_TH_2P_HC49US_	HC49US	8 MHz	2	Q1 Q2	
LM94022_5P_SC70_5_LM	SC70_5	LM94022	1	U3	
MSP430F1611_2_STQFP6	STQFP64	MSP430F1611	1	U2	
MT9V032_5_CLCC11X11_	CLCC11X11_48	MT9V032	1	U1	
OPA2333_8P_GATE_SO8_	SO8	OPA2333	1	U5	
R1LV0416C-I_0_TSOP44	TSOP44	R1LV0416C-I	1	U9	
R_0805_0	0805	0	2	R23 R24	
R_0805_1.5K	0805	1.5k	2	R6 R10	
R_0805_100K	0805	100k	12	R11 R12 R13 R14 R15 R16 R17 R18 R19 R20 R21 R22	
R_0805_10K	0805	10k	2	R1 R8	
R_0805_1K	0805	1k	3	R2 R5 R9	
R_0805_47K	0805	47k	1	R7	
SW PUSHBUTTON-DPST_1	POUSMD3	SW PUSHBUTTON-DPST	1	SW2	
VISM3_TROU3_3_TP5435	TP5435	Test Point	4	TP1 TP2 TP3 TP4	

Total Component count 63

NC Pins Report PAYLOAD

payload_gloss

Mon Jun 16 16:28:55 MET DST 2008

Ref Des	Device	Nb	Not Connected Pins										Remark
U1	MT9V032_5_CLCC11X11_	12	2	3	4	5	22	26	27	36	37	44	
			45	46									
U2	MSP430F1611_2_STQFP6	5	10	11	28	50	51						
U9	R1LV0416C-I_0_TSOP44	8	29	30	31	32	35	36	37	38			

Total count 25

Power Pins Report PAYLOAD

payload_gloss

Mon Jun 16 16:28:56 MET DST 2008

Ref Des	Device	Name	Power Pins	Remark
J1	CON8_RIBBON_8_2_55MM	GND	1 7 8	
J4	CON7_RIBBON_7_1MM_MB	GND	3 4 7	
SW1	SW_PUSHBUTTON-DPST_1	GND	1 3	
SW2	SW_PUSHBUTTON-DPST_1	GND	1 3	
TP2	VISM3_TROU3_3_TP5435	GND	1	
U1	MT9V032_5_CLCC11X11_	GND	7 9 11 12 13 29 34 38 48	
U2	MSP430F1611_2_STQFP6	GND	62 63	
U3	LM94022_5P_SC70_5_LM	GND	2 5	
U5	OPA2333_8P_GATE_SO8_	GND	4 6	
U9	R1LV0416C-I_0_TSOP44	GND	12 18 19 20 34	

Total count 10

Single Node Nets Report PAYLOAD

payload_gloss

Mon Jun 16 16:28:57 MET DST 2008

Netname	Node	Device	Remark
---------	------	--------	--------

Total Nets count 0