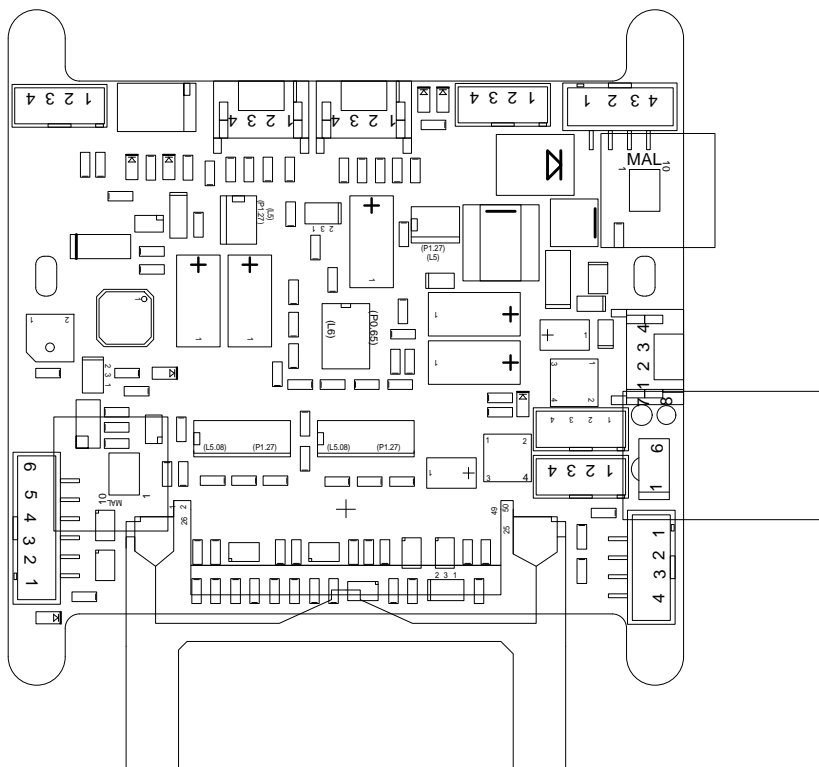


OS4

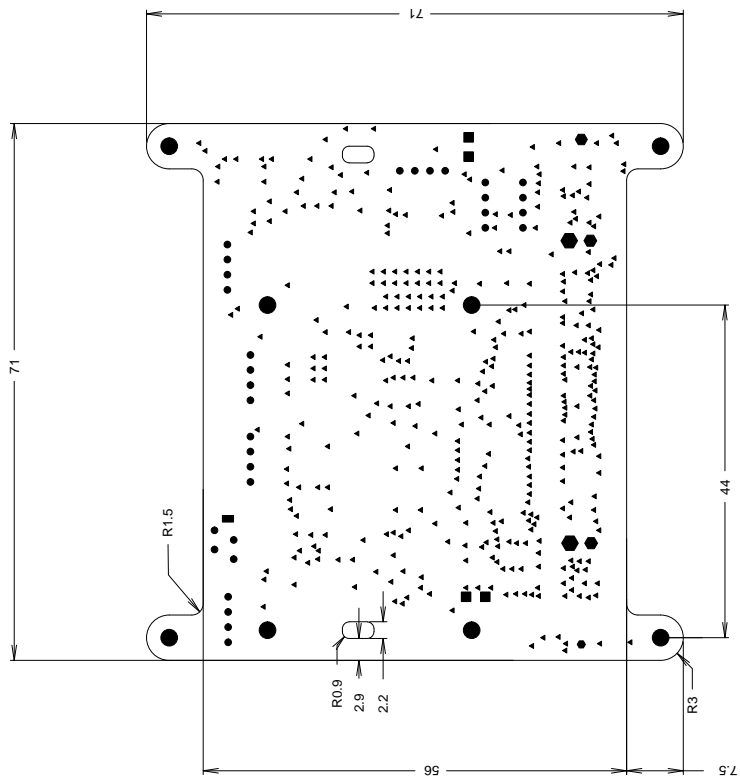
I2S S.Bouabdallah
 Phone:
 Fri Dec 24 11:12:29 MET 2004

MFG_DATE: Undefined
 QUANTITY: 4
 SOLDERMASK: mtop mbot
 MATERIAL: FR4 : 1 mm



CONTENTS	PAGE
Drill	3
Etch	4
OutDetail_Bottom	5
OutDetail_Top	6
Outline_Top	7
Gerber_mtop	8
Gerber_top	9
Gerber_gnd	10
Gerber_top1	11
Gerber_bot1	12
Gerber_v33	13
Gerber_bot	14
Gerber_mbot	15
Gerber_cont	16

CONTENTS	PAGE
Component Report	17 - 19
BOM Report	20 - 21
NC-Pins Report	22
Power-Pins Report	23
Single Node Nets	24 - 25



DRILL CHART			
FIGURE	SIZE	PLATED	QTY
.	0.203	PLATED	394
•	0.787	PLATED	32
■	0.889	PLATED	4
■	1.499	PLATED	1
●	2.2	PLATED	8
●	1.1	NOT PLATED	1
●	1.6	NOT PLATED	1
●	1.7	NOT PLATED	2
●	2.2	NOT PLATED	2

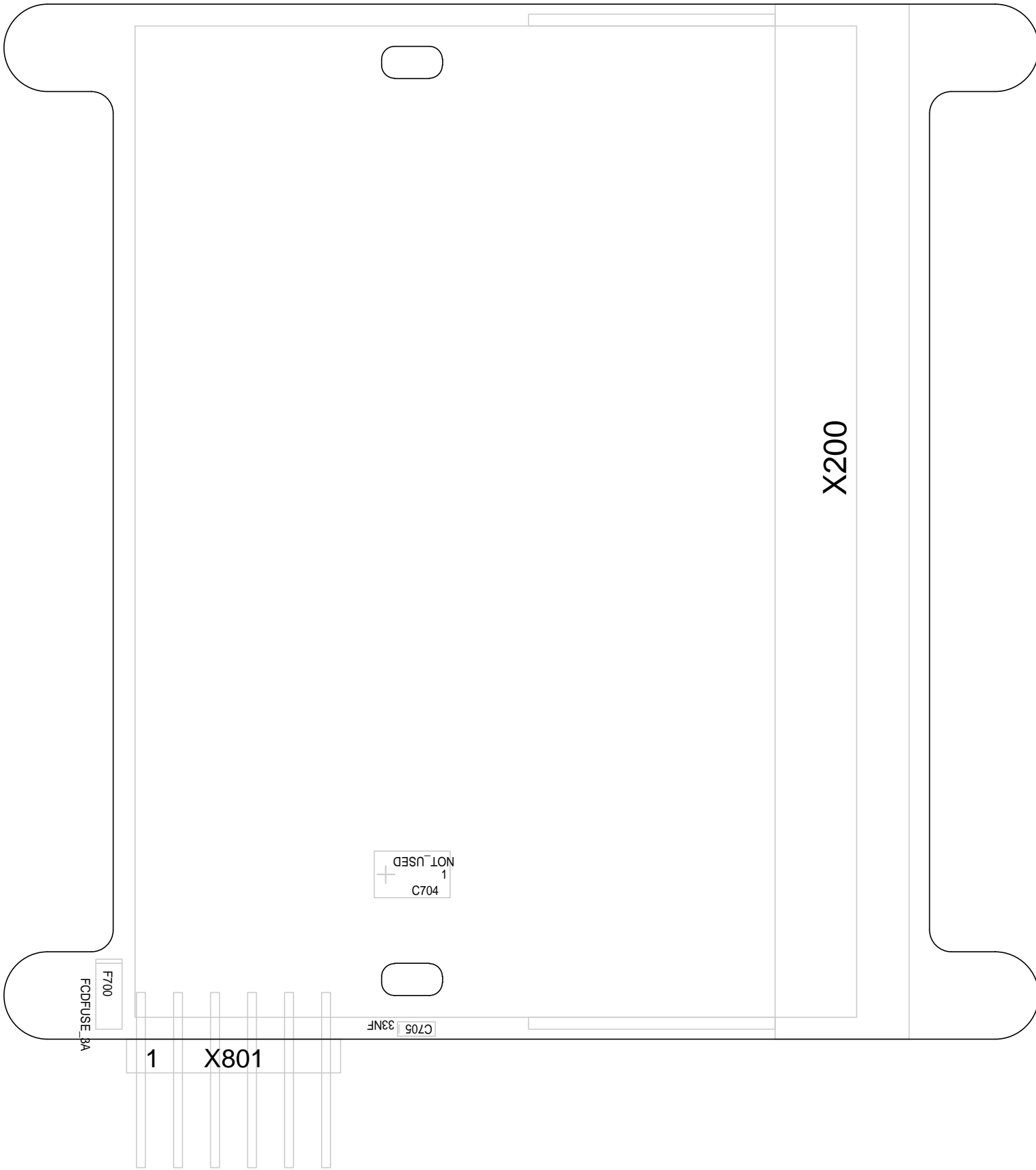
TITRE:

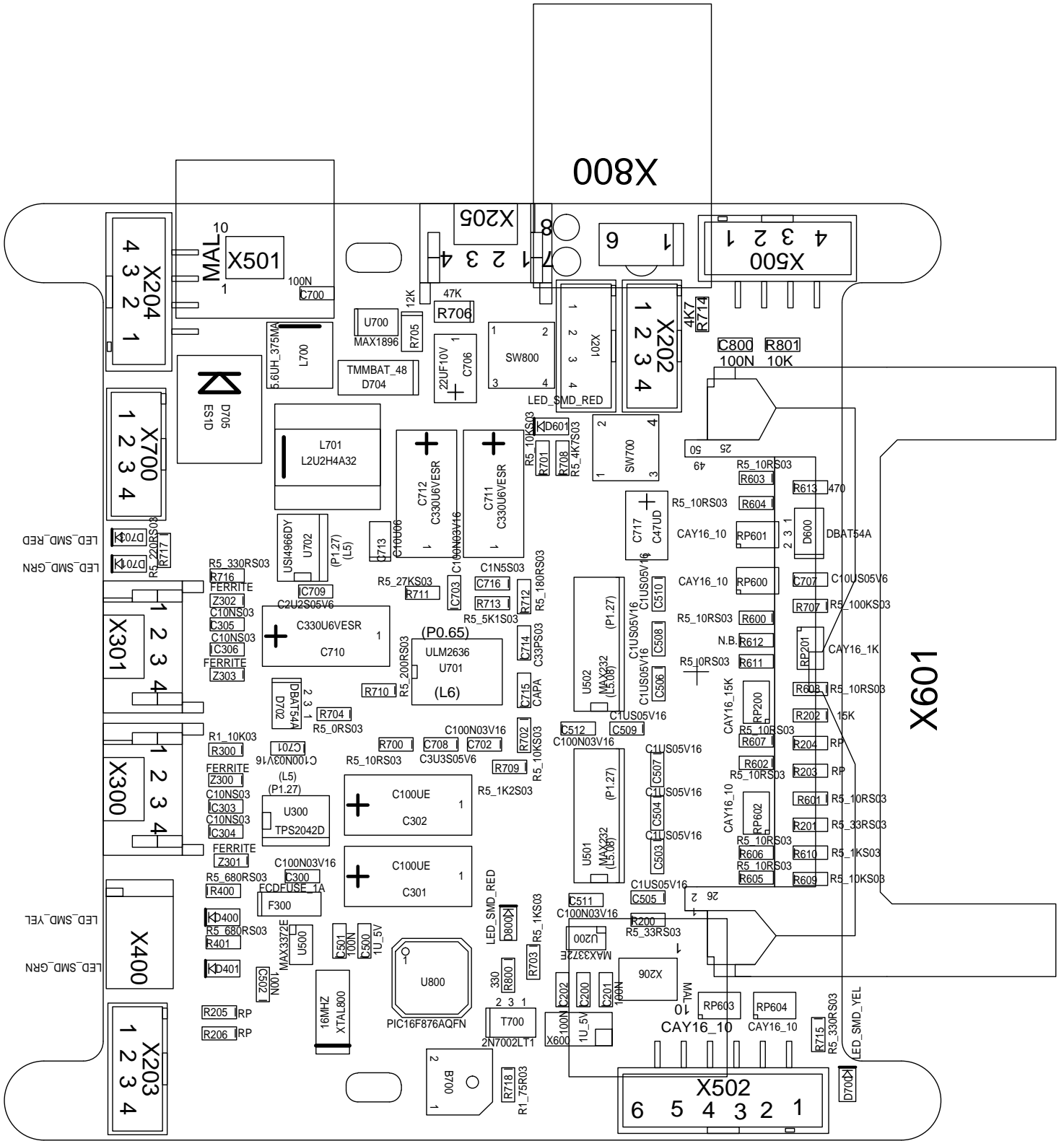
LABORATOIRE:

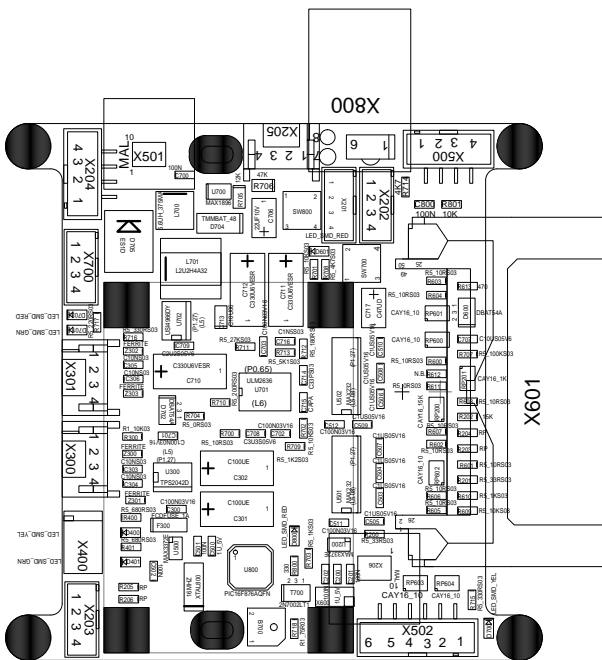
DATE:

ENGINEER:

EPFL-ACORT-







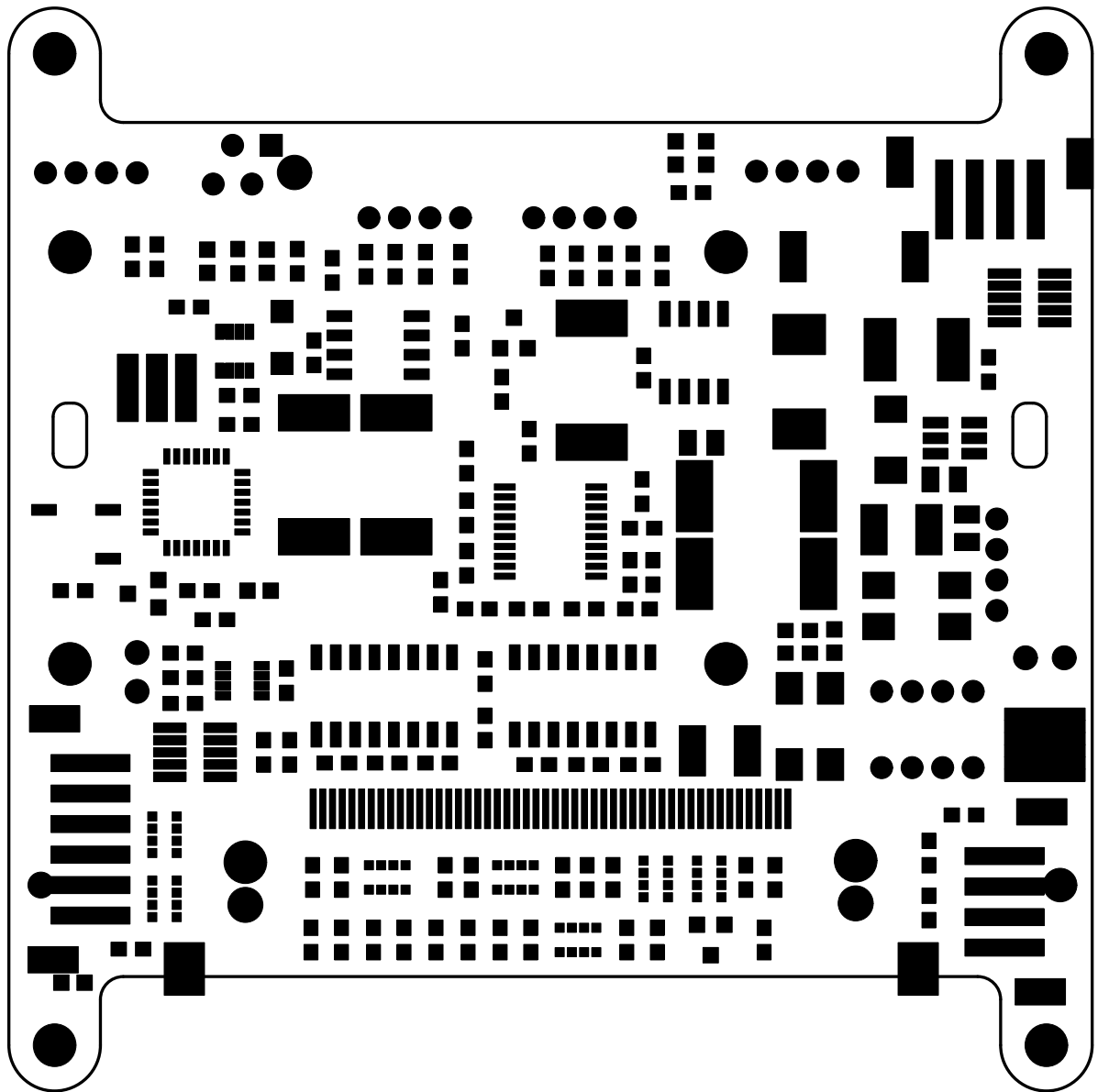
TITRE:

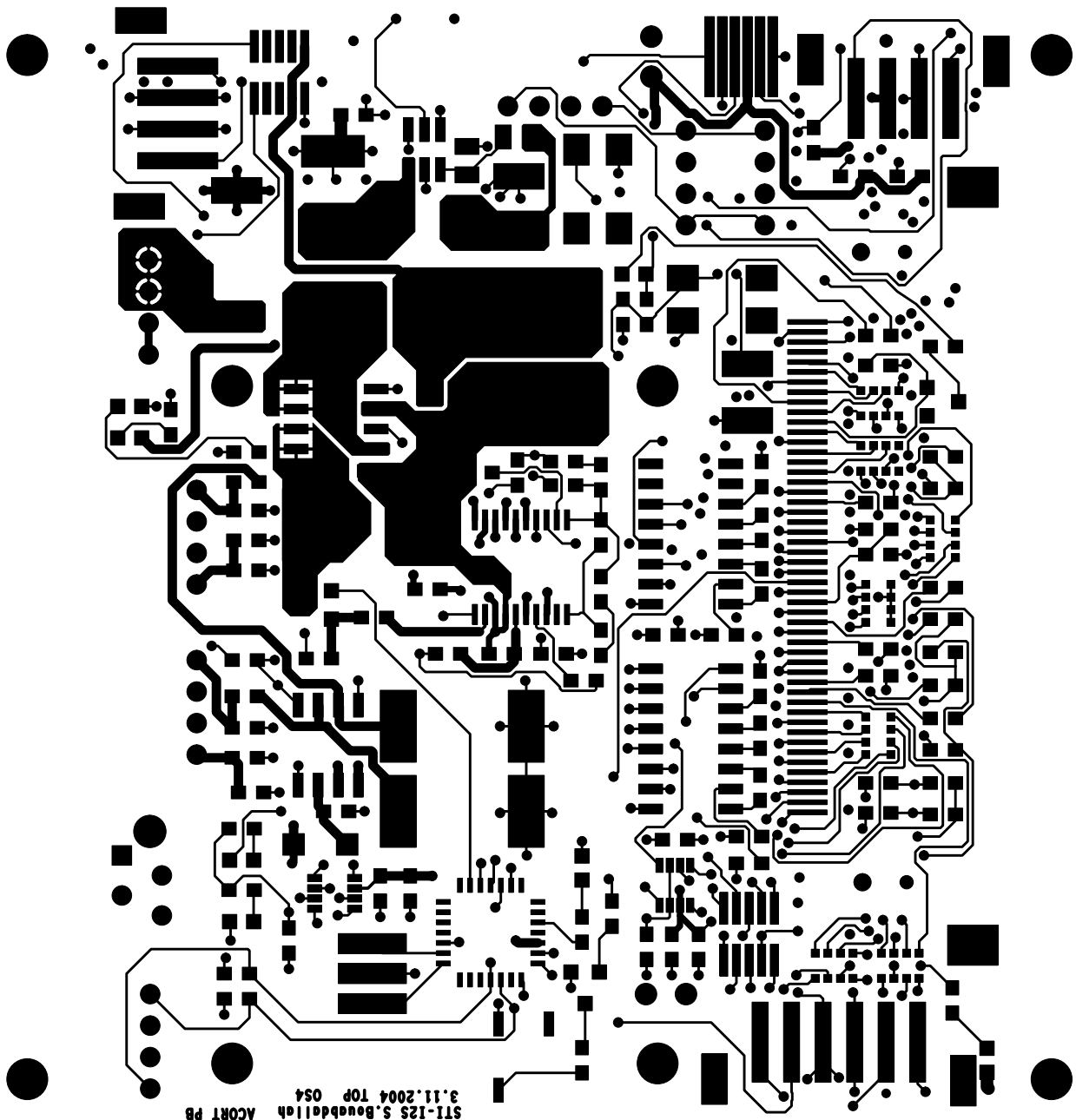
LABORATOIRE:

DATE:

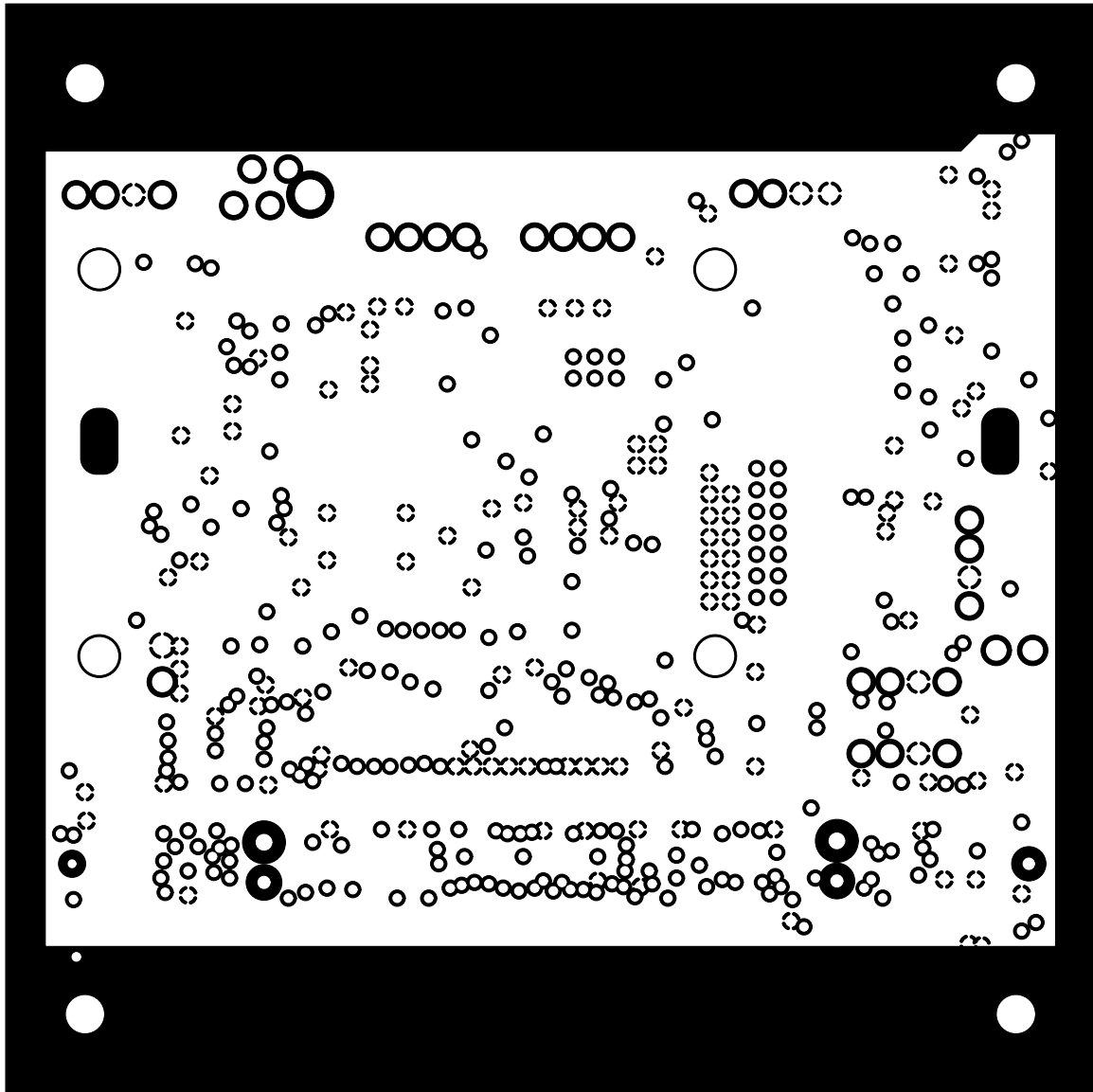
ENGINEER:

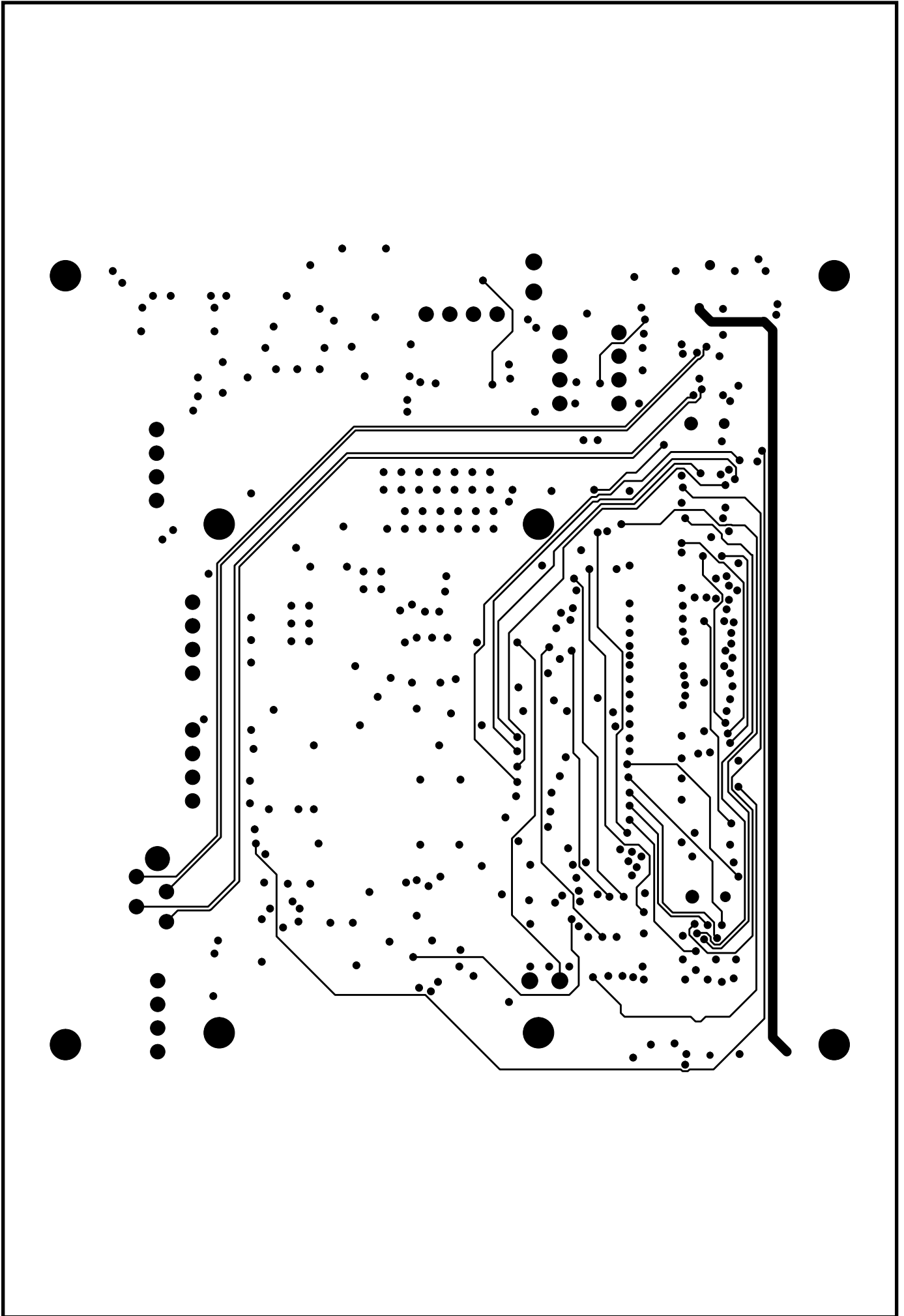
EPFL-ACORT-

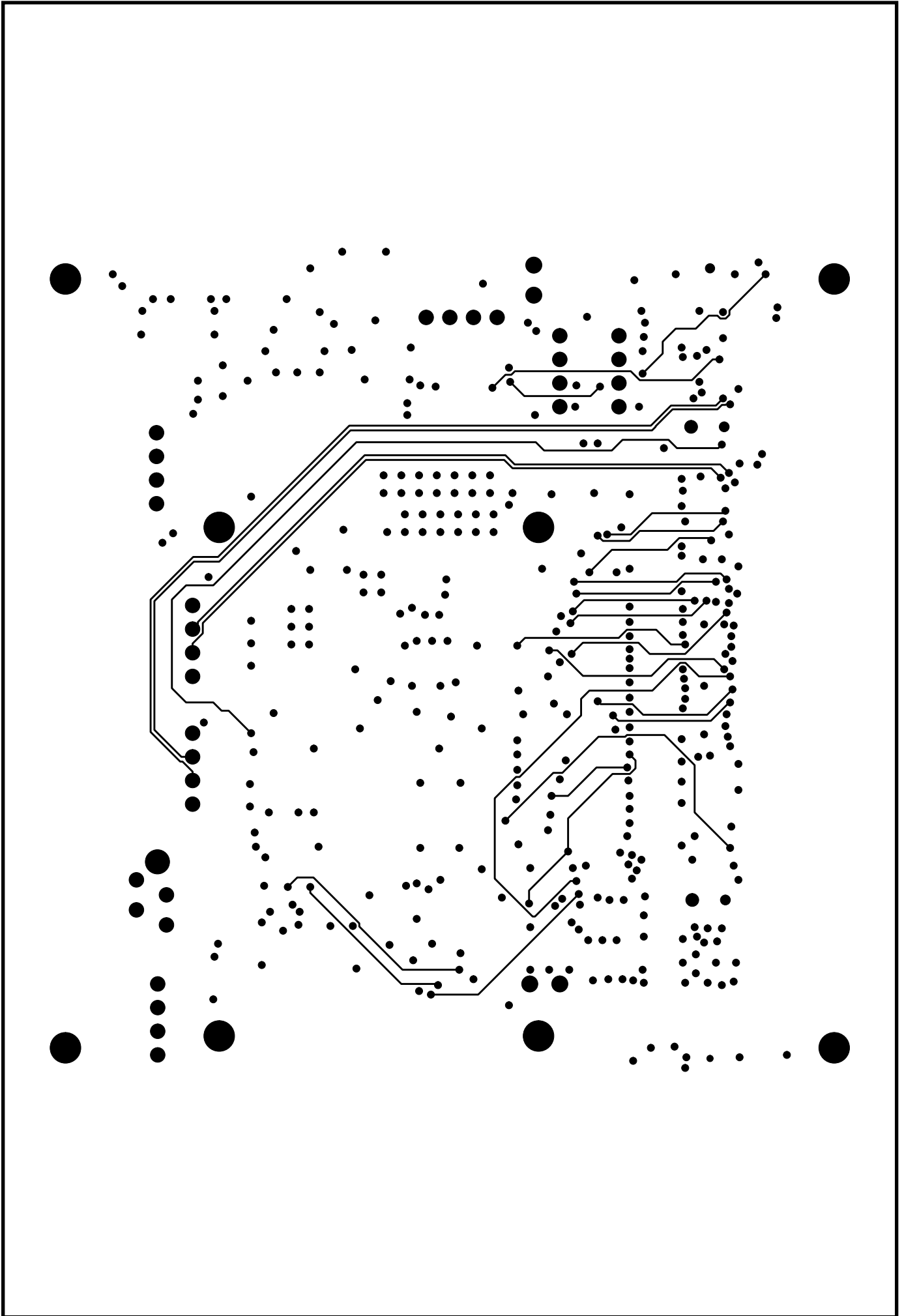


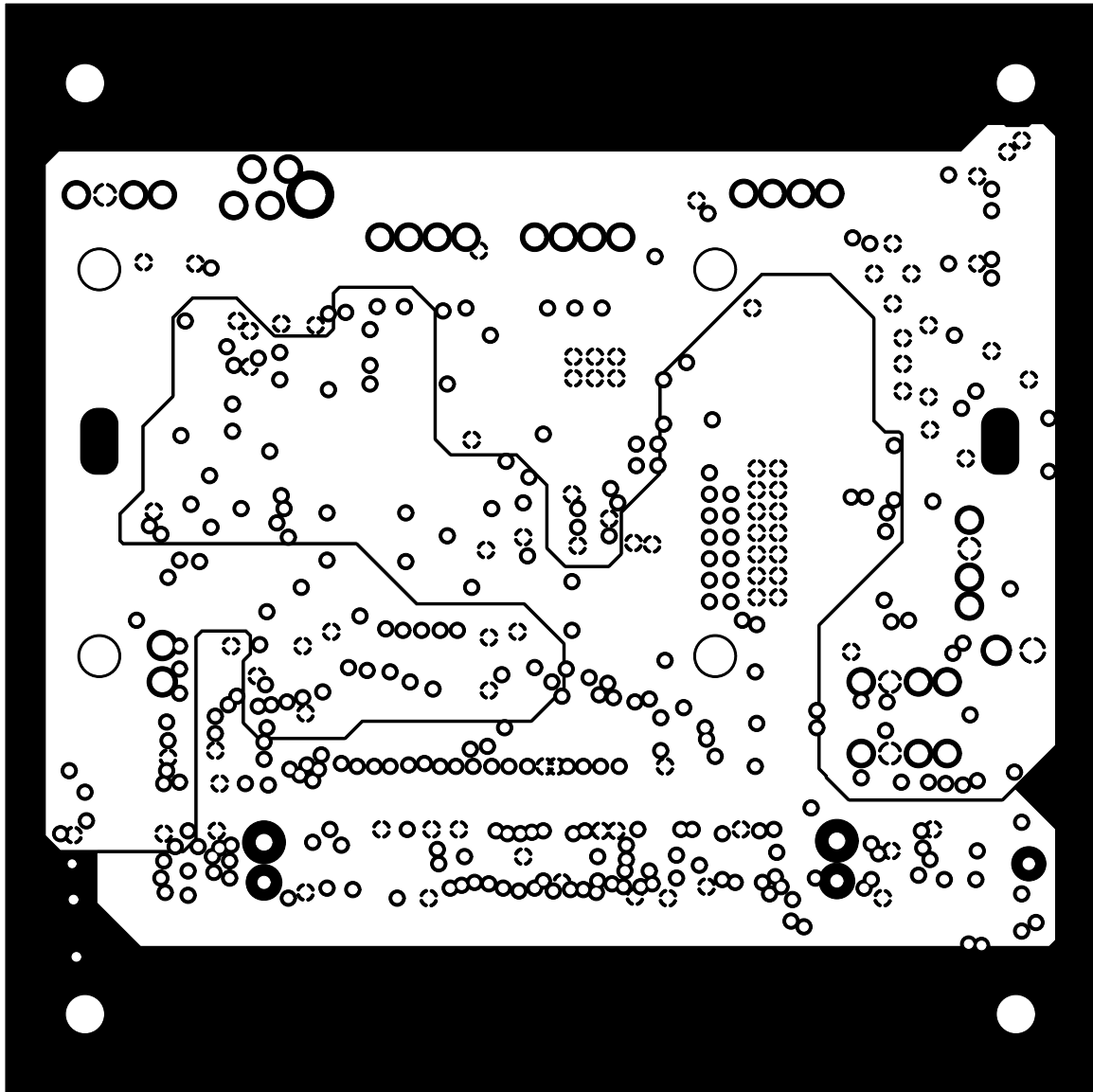


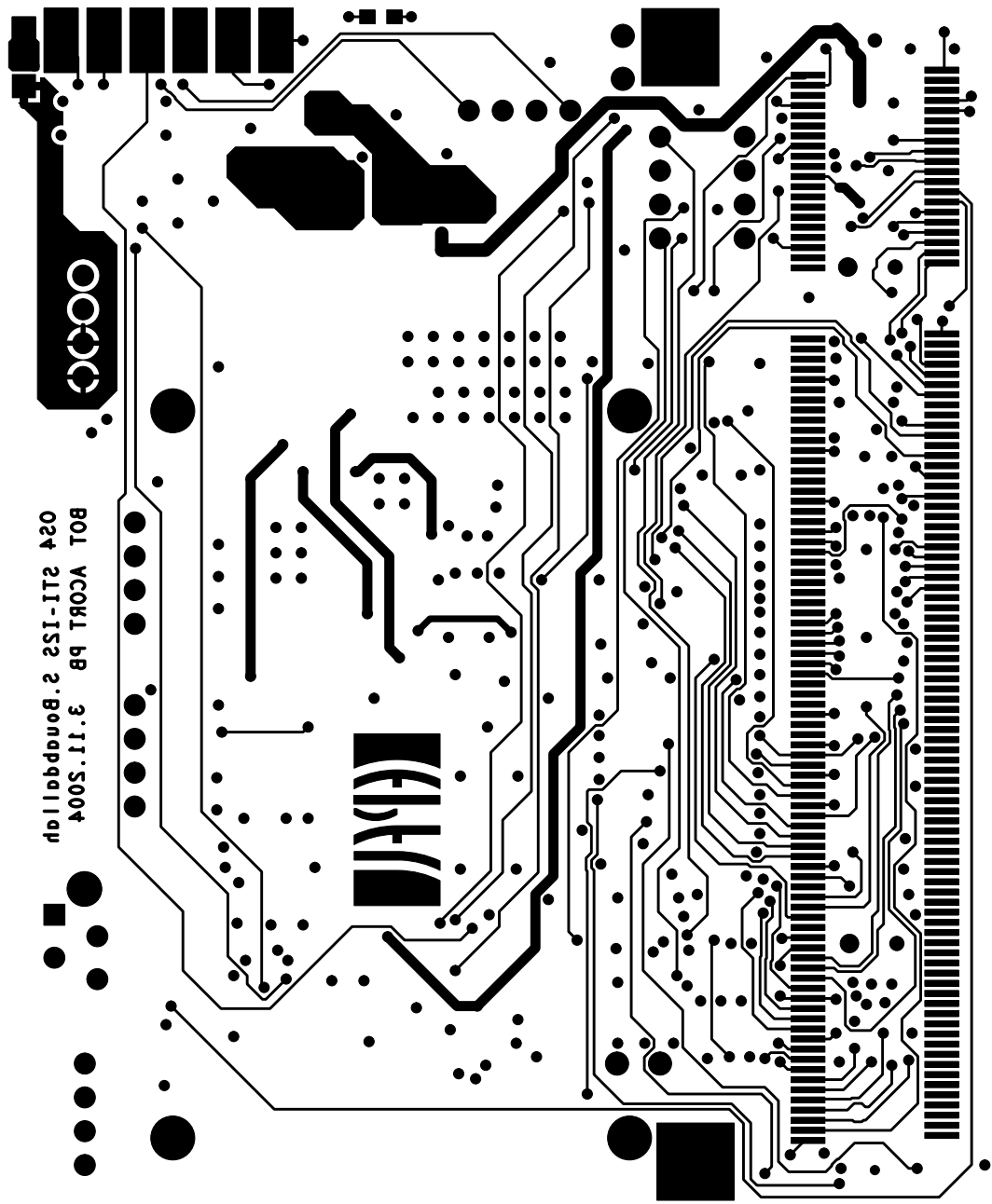
STI-125 S. Bourdeliuh
ACORT PB
3.11.2004 TOP OS4



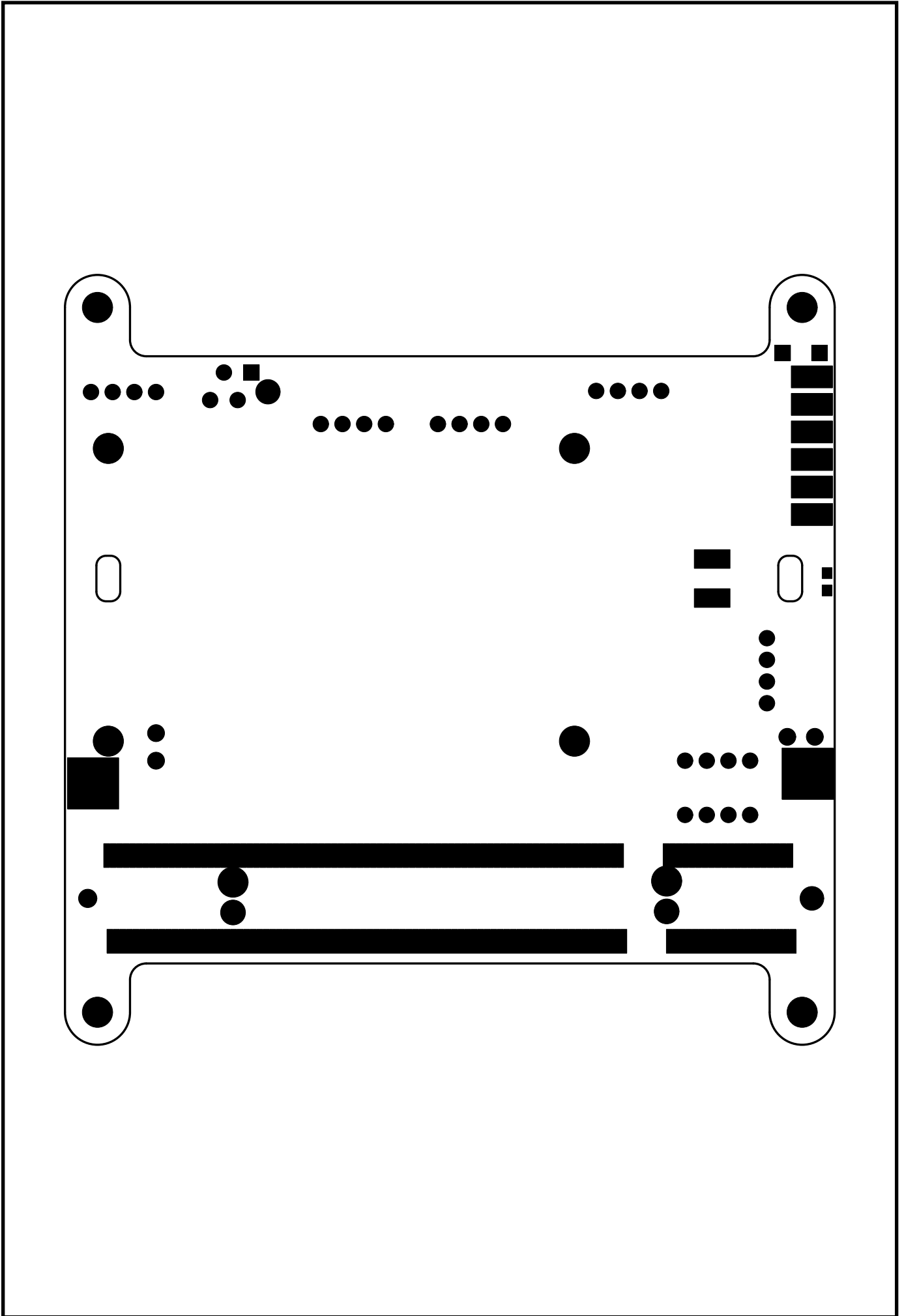


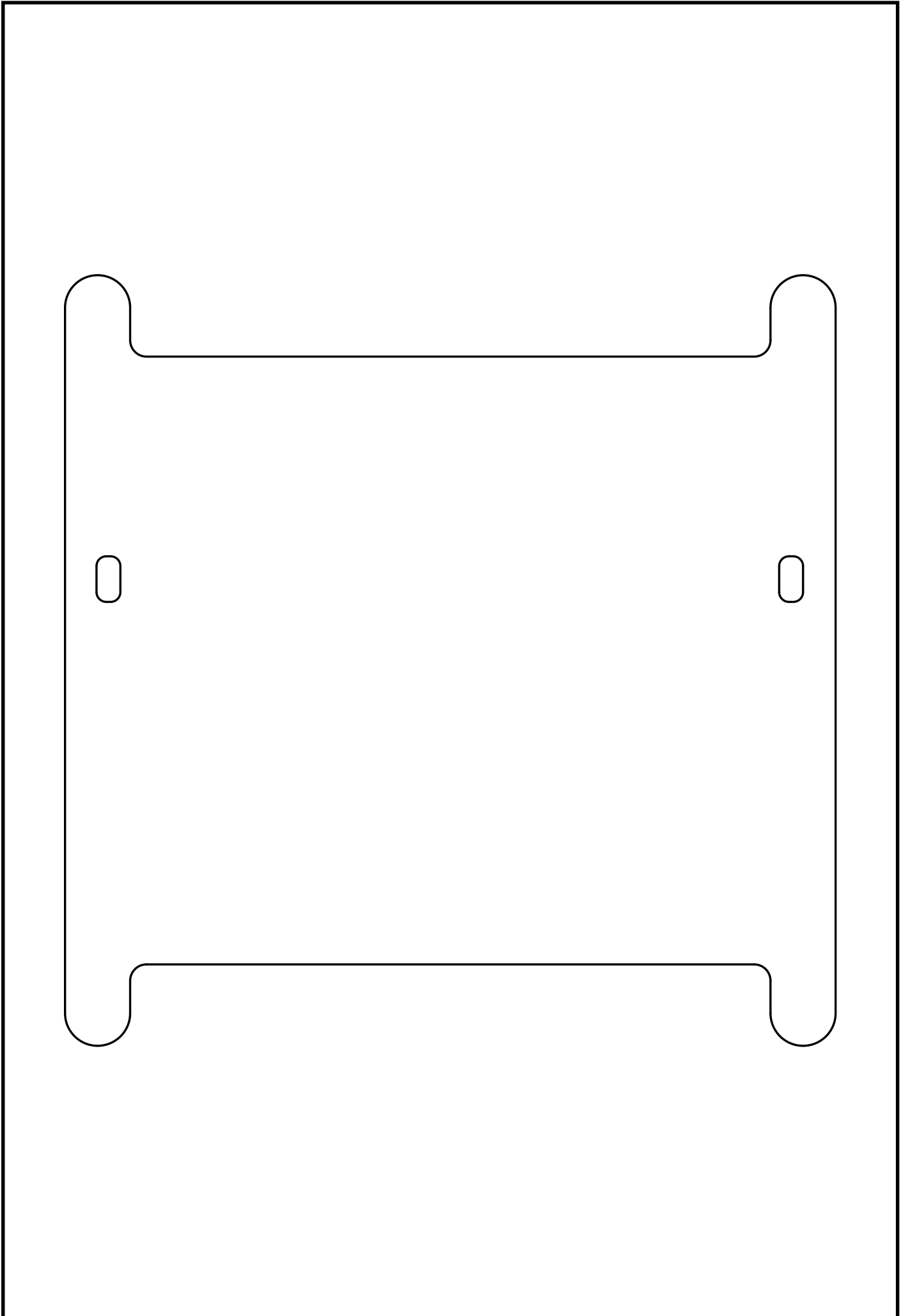






024 211-1S2 2 Bonobpqlilqhu
A00S.11.3 3.11.S004
BOT ACORT PB 3.11.S004





Component Report OS4

os4_gloss

Fri Dec 24 11:12:30 MET 2004

Ref Des	Device Type	Value	Package Type	x	y	ang	Mir	Remark
B700	BUZZER	BUZZER	BUZZ_NFT_03A	1.400	33.500	180.000	NO	
C200	1U_5V	1U_5V	0603	8.400	24.100	90.000	NO	
C201	100N	100N	0603	8.400	22.400	90.000	NO	
C202	100N	100N	0603	8.400	25.700	90.000	NO	
C300	C100N03V16	C100N03V16	0603	17.000	45.400	0.000	NO	
C301	C100UE	C100UE	CP_3216	17.000	37.400	180.000	NO	
C302	C100UE	C100UE	CP_3216	22.400	37.400	180.000	NO	
C303	C10NS03	C10NS03	0603	22.300	51.200	0.000	NO	
C304	C10NS03	C10NS03	0603	20.400	51.200	0.000	NO	
C305	C10NS03	C10NS03	0603	36.100	51.100	0.000	NO	
C306	C10NS03	C10NS03	0603	34.200	51.100	0.000	NO	
C500	1U_5V	1U_5V	0603	12.100	40.700	90.000	NO	
C501	100N	100N	0603	12.100	42.600	90.000	NO	
C502	100N	100N	0603	8.800	48.400	90.000	NO	
C503	C1US05V16	C1US05V16	0603	18.500	18.500	270.000	NO	
C504	C1US05V16	C1US05V16	0603	21.800	18.500	270.000	NO	
C505	C1US05V16	C1US05V16	0603	15.400	19.200	180.000	NO	
C506	C1US05V16	C1US05V16	0603	31.600	18.400	270.000	NO	
C507	C1US05V16	C1US05V16	0603	25.100	18.500	270.000	NO	
C508	C1US05V16	C1US05V16	0603	35.000	18.400	270.000	NO	
C509	C1US05V16	C1US05V16	0603	28.200	20.800	180.000	NO	
C510	C1US05V16	C1US05V16	0603	38.400	18.400	270.000	NO	
C511	C100N03V16	C100N03V16	0603	15.200	23.900	0.000	NO	
C512	C100N03V16	C100N03V16	0603	28.200	24.500	0.000	NO	
C700	100N	100N	0603	61.200	44.300	0.000	NO	
C701	C100N03V16	C100N03V16	0603	26.700	46.500	180.000	NO	
C702	C100N03V16	C100N03V16	0603	27.000	31.600	180.000	NO	
C703	C100N03V16	C100N03V16	0603	38.500	33.900	90.000	NO	
C704	NOTUSED	NOT_USED	CP_1412	56.700	40.000	180.000	YES	
C705	33NF	33NF	0603	67.300	39.700	0.000	YES	
C706	22UF10V	22UF10V	CP_1412	55.500	33.800	270.000	NO	
C707	C10US05V6	C10US05V6	0603	39.500	6.900	0.000	NO	
C708	C3U3S05V6	C3U3S05V6	0603	27.000	34.900	180.000	NO	
C709	C2U2S05V6	C2U2S05V6	0603	38.600	44.400	0.000	NO	
C710	C330U6VESR	C330U6VESR	CP_3216	35.200	43.600	180.000	NO	
C711	C330U6VESR	C330U6VESR	CP_3216	46.000	30.900	90.000	NO	
C712	C330U6VESR	C330U6VESR	CP_3216	46.000	36.000	90.000	NO	
C713	C10U06	C10U06	0805_G	42.400	39.500	90.000	NO	
C714	C33PS03	C33PS03	0603	34.700	28.600	90.000	NO	
C715	CAPA	CAPA	0603	31.100	28.600	90.000	NO	
C716	C1N5S03	C1N5S03	0603	39.200	31.000	180.000	NO	
C717	C47UD	C47UD	CP_1412	43.600	19.300	90.000	NO	
C800	100N	100N	0603	57.300	12.600	0.000	NO	
D400	LEDSMDYEL	LED_SMD_YEL	SMDLED_MINI	13.900	51.400	0.000	NO	
D401	LEDSMDGRN	LED_SMD_GRN	SMDLED_MINI	10.000	51.400	0.000	NO	
D600	DBAT54A	DBAT54A	SOT23_2	43.000	6.900	270.000	NO	
D601	LEDSMDRED	LED_SMD_RED	SMDLED_MINI	51.100	26.500	0.000	NO	
D700	LEDSMDYEL	LED_SMD_YEL	SMDLED_MINI	1.200	4.100	270.000	NO	
D701	LEDSMDGRN	LED_SMD_GRN	SMDLED_MINI	40.700	58.500	0.000	NO	
D702	DBAT54A	DBAT54A	SOT23_2	30.100	46.700	90.000	NO	
D703	LEDSMDRED	LED_SMD_RED	SMDLED_MINI	42.700	58.500	0.000	NO	
D704	TMMBAT48	TMMBAT_48	MINIMELF	54.800	39.700	180.000	NO	
D705	ES1D	ES1D	DO214AB	52.400	51.700	270.000	NO	
D800	LEDSMDRED	LED_SMD_RED	SMDLED_MINI	13.400	29.800	270.000	NO	
F300	FCDFUSE_1A	FCDFUSE_1A	1206	14.900	46.400	0.000	NO	
F700	FCDFUSE_3A	FCDFUSE_3A	1206	64.900	60.800	90.000	YES	
L700	5_6UH_375MA	5.6UH_375MA	SELF5X5MM	56.500	45.600	270.000	NO	
L701	L2U2H4A32	L2U2H4A32	DR73	48.800	43.500	0.000	NO	

Component Report OS4

os4_gloss

Fri Dec 24 11:12:30 MET 2004

Ref Des	Device Type	Value	Package Type	x	y	ang	Mir	Remark
R200	R5_33RS03	R5_33RS03	0603	13.700	19.200	0.000	NO	
R201	R5_33RS03	R5_33RS03	0603	20.900	6.900	0.000	NO	
R202	15K	15K	0603	29.200	6.900	180.000	NO	
R203	RP	RP	0603	25.000	6.900	0.000	NO	
R204	RP	RP	0603	27.100	6.900	0.000	NO	
R205	RP	RP	0603	6.700	51.700	180.000	NO	
R206	RP	RP	0603	5.100	51.700	180.000	NO	
R300	R1_10K03	R1_10K03	0603	26.600	51.200	180.000	NO	
R400	R5_680RS03	R5_680RS03	0603	15.900	51.400	0.000	NO	
R401	R5_680RS03	R5_680RS03	0603	12.000	51.400	0.000	NO	
R600	R5_10RS03	R5_10RS03	0603	36.600	11.000	180.000	NO	
R601	R5_10RS03	R5_10RS03	0603	22.900	6.900	180.000	NO	
R602	R5_10RS03	R5_10RS03	0603	25.600	11.000	180.000	NO	
R603	R5_10RS03	R5_10RS03	0603	47.200	11.000	180.000	NO	
R604	R5_10RS03	R5_10RS03	0603	45.300	11.000	180.000	NO	
R605	R5_10RS03	R5_10RS03	0603	16.900	11.000	0.000	NO	
R606	R5_10RS03	R5_10RS03	0603	18.800	11.000	0.000	NO	
R607	R5_10RS03	R5_10RS03	0603	27.300	11.000	180.000	NO	
R608	R5_10RS03	R5_10RS03	0603	31.200	6.900	180.000	NO	
R609	R5_10KS03	R5_10KS03	0603	16.800	6.900	0.000	NO	
R610	R5_1KS03	R5_1KS03	0603	18.800	6.900	0.000	NO	
R611	R5_0RS03	R5_0RS03	0603	33.300	11.000	0.000	NO	
R612	N_B_	N.B.	0603	34.900	11.000	0.000	NO	
R613	470	470	0603	46.500	6.900	0.000	NO	
R700	R5_10RS03	R5_10RS03	0603	27.000	38.300	180.000	NO	
R701	R5_10KS03	R5_10KS03	0603	48.700	27.200	90.000	NO	
R702	R5_10KS03	R5_10KS03	0603	27.700	28.600	270.000	NO	
R703	R5_1KS03	R5_1KS03	0603	10.500	27.900	270.000	NO	
R704	R5_0RS03	R5_0RS03	0603	29.300	43.000	180.000	NO	
R705	12K	12K	0805_G	58.300	37.100	270.000	NO	
R706	47K	47K	0805_G	59.800	33.900	180.000	NO	
R707	R5_100KS03	R5_100KS03	0603	37.500	6.900	180.000	NO	
R708	R5_4K7S03	R5_4K7S03	0603	48.700	25.700	90.000	NO	
R709	R5_1K2S03	R5_1K2S03	0603	25.300	29.700	180.000	NO	
R710	R5_200RS03	R5_200RS03	0603	31.100	39.600	180.000	NO	
R711	R5_27KS03	R5_27KS03	0603	38.500	36.300	0.000	NO	
R712	R5_180RS03	R5_180RS03	0603	38.200	28.600	90.000	NO	
R713	R5_5K1S03	R5_5K1S03	0603	37.700	31.000	180.000	NO	
R714	4K7	4K7	0603	59.600	15.100	270.000	NO	
R715	R5_330RS03	R5_330RS03	0603	5.000	6.300	270.000	NO	
R716	R5_330RS03	R5_330RS03	0603	39.800	51.100	0.000	NO	
R717	R5_220RS03	R5_220RS03	0603	41.700	55.900	270.000	NO	
R718	R1_75R03	R1_75R03	0603	1.200	29.800	270.000	NO	
R800	330	330	0603	9.500	29.800	270.000	NO	
R801	10K	10K	0603	57.300	9.000	0.000	NO	
RP200	CAY16_15K	CAY16_15K	RN4_1206	30.200	11.000	90.000	NO	
RP201	CAY16_1K	CAY16_1K	RN4_1206	34.300	6.900	270.000	NO	
RP600	CAY16_10	CAY16_10	RN4_1206	39.400	10.900	0.000	NO	
RP601	CAY16_10	CAY16_10	RN4_1206	42.900	10.900	0.000	NO	
RP602	CAY16_10	CAY16_10	RN4_1206	21.800	11.000	90.000	NO	
RP603	CAY16_10	CAY16_10	RN4_1206	7.200	13.800	0.000	NO	
RP604	CAY16_10	CAY16_10	RN4_1206	7.200	9.600	0.000	NO	
SW700	SW7914J	SW7914J	POUSMD4	49.500	20.900	0.000	NO	
SW800	SW	SW_PB	POUSMD4	56.500	28.800	270.000	NO	
T700	2N7002LT1	2N7002LT1	SOT23_2	5.800	29.600	180.000	NO	
U200	MAX3372E	MAX3372E	SOT23_8	12.300	23.900	90.000	NO	
U300	TPS2042D	TPS2042D	SO8	21.200	45.900	0.000	NO	
U500	MAX3372E	MAX3372E	SOT23_8	11.800	45.500	180.000	NO	

Component Report OS4

os4_gloss

Fri Dec 24 11:12:30 MET 2004

Ref Des	Device Type	Value	Package Type	x	y	ang	Mir	Remark
U501	MAX232	MAX232	SO16	21.600	22.900	90.000	NO	
U502	MAX232	MAX232	SO16	34.600	22.900	90.000	NO	
U700	MAX1896	MAX1896	SOT23_6	59.000	39.800	0.000	NO	
U701	ULM2636	ULM2636	TSSOP20	32.500	36.600	0.000	NO	
U702	USI4966DY	USI4966DY	SO8	41.900	45.400	90.000	NO	
U800	PIC16F876AQFN	PIC16F876AQFN28QFN28_065MM		9.300	35.600	270.000	NO	
X200	DDR	SODIMM_200	SODIMM200	32.500	10.500	0.000	YES	
X201	JST4_2MM	JST4_2MM	JST4_TH	57.200	23.900	180.000	NO	
X202	JST4_2MM	JST4_2MM	JST4_TH	57.200	18.900	180.000	NO	
X203	JST4_2MM	JST4_2MM	JST4_TH	2.400	57.900	180.000	NO	
X204	JST4_2MM	JST4_2MM	JST4_SMD	61.300	57.800	180.000	NO	
X205	JST4_2MM	JST4_2MM	JST4_THS	68.000	31.500	90.000	NO	
X206	SAM10F	SAM10F	BLUETOOTH_OS4	9.200	19.200	90.000	NO	
X300	JST4_2MM	JST4_2MM	JST4_THS	23.600	60.500	180.000	NO	
X301	JST4_2MM	JST4_2MM	JST4_THS	34.400	60.500	180.000	NO	
X400	JST4_2MM	JST4_2MM	MM4	14.200	59.000	180.000	NO	
X500	JST4_2MM	JST4_2MM	JST4_SMD	64.600	9.400	90.000	NO	
X501	SAM10F	SAM10F	BLUETOOTH_OS4	63.900	49.000	270.000	NO	
X502	JST6_2MM	JST6_2MM	JST6_SMD	0.000	13.500	270.000	NO	
X600	JUMP2	JUMP2	JUMP2	5.400	23.200	0.000	NO	
X601	COMPACTFLASH	COMPACT_FLASH	HCF50MC_SMD_2	32.500	15.500	0.000	NO	
X700	JST4_2MM	JST4_2MM	JST4_TH	49.000	58.000	180.000	NO	
X800	PROGPIC	PROGPIC	PROGPIC	64.900	19.700	90.000	NO	
X801	SIL6	SIL6	SIL6_SMD	68.000	58.600	90.000	YES	
XTAL800	16MHZ	16MHZ	OSC_CERAMIC	6.700	43.100	90.000	NO	
Z300	FERRITE	FERRITE	0603	24.300	51.200	180.000	NO	
Z301	FERRITE	FERRITE	0603	18.200	50.800	180.000	NO	
Z302	FERRITE	FERRITE	0603	37.900	51.100	180.000	NO	
Z303	FERRITE	FERRITE	0603	32.300	51.100	180.000	NO	

Total Component count 145

BOM Report OS4

os4_gloss

Fri Dec 24 11:12:31 MET 2004

Device	Package	Value	Nb	Reference Designators					Remark
100N	0603	100N	6	C201 C800	C202	C501	C502	C700	
10K	0603	10K	1	R801					
12K	0805_G	12K	1	R705					
15K	0603	15K	1	R202					
16MHZ	OSC_CERAMIC	16MHZ	1	XTAL800					
1U_5V	0603	1U_5V	2	C200	C500				
22UF10V	CP_1412	22UF10V	1	C706					
2N7002LT1	SOT23_2	2N7002LT1	1	T700					
330	0603	330	1	R800					
33NF	0603	33NF	1	C705					
470	0603	470	1	R613					
47K	0805_G	47K	1	R706					
4K7	0603	4K7	1	R714					
5_6UH_375MA	SELF5X5MM	5.6UH_375MA	1	L700					
BUZZER	BUZZ_NFT_03A	BUZZER	1	B700					
C100N03V16	0603	C100N03V16	6	C300 C703	C511	C512	C701	C702	
C100UE	CP_3216	C100UE	2	C301	C302				
C10NS03	0603	C10NS03	4	C303	C304	C305	C306		
C10U06	0805_G	C10U06	1	C713					
C10US05V6	0603	C10US05V6	1	C707					
C1N5S03	0603	C1N5S03	1	C716					
C1US05V16	0603	C1US05V16	8	C503 C508	C504 C509	C505 C510	C506	C507	
C2U2S05V6	0603	C2U2S05V6	1	C709					
C330U6VESR	CP_3216	C330U6VESR	3	C710	C711	C712			
C33PS03	0603	C33PS03	1	C714					
C3U3S05V6	0603	C3U3S05V6	1	C708					
C47UD	CP_1412	C47UD	1	C717					
CAPA	0603	CAPA	1	C715					
CAY16_10	RN4_1206	CAY16_10	5	RP600	RP601	RP602	RP603	RP604	
CAY16_15K	RN4_1206	CAY16_15K	1	RP200					
CAY16_1K	RN4_1206	CAY16_1K	1	RP201					
COMPACTFLASH	CF50MC_SMD_2	COMPACT_FLASH	X601						
DBAT54A	SOT23_2	DBAT54A	2	D600	D702				
DDR-SODIMM-20	SODIMM200	SODIMM_200	1	X200					
ES1D	DO214AB	ES1D	1	D705					
FCDFUSE_1A	1206	FCDFUSE_1A	1	F300					
FCDFUSE_3A	1206	FCDFUSE_3A	1	F700					
FERRITE	0603	FERRITE	4	Z300	Z301	Z302	Z303		
JST4_2MM	JST4_TH	JST4_2MM	4	X201	X202	X203	X700		
JST4_2MM-1	JST4_SMD	JST4_2MM	2	X204	X500				
JST4_2MM-2	JST4_THS	JST4_2MM	3	X205	X300	X301			
JST4_2MM-3	MM4	JST4_2MM	1	X400					
JST6_2MM	JST6_SMD	JST6_2MM	1	X502					
JUMP2	JUMP2	JUMP2	1	X600					
L2U2H4A32	DR73	L2U2H4A32	1	L701					
LEDSMDGRN	SMDLED_MINI	LED_SMD_GRN	X	D401	D701				
LEDSMDRED	SMDLED_MINI	LED_SMD_RED	X	D601	D703	D800			
LEDSMDYEL	SMDLED_MINI	LED_SMD_YEL	X2	D400	D700				
MAX1896	SOT23_6	MAX1896	1	U700					
MAX232	SO16	MAX232	2	U501	U502				
MAX3372E	SOT23_8	MAX3372E	2	U200	U500				
NOTUSED	CP_1412	NOT_USED	1	C704					
N_B_	0603	N.B.	1	R612					
PIC16F876AQFN	QFN28_065MM	PIC16F876AQFN	28	U800					
PROGPIC	PROGPIC	PROGPIC	1	X800					

BOM Report OS4

os4_gloss

Fri Dec 24 11:12:31 MET 2004

Device	Package	Value	Nb	Reference Designators					Remark
R1_10K03	0603	R1_10K03	1	R300					
R1_75R03	0603	R1_75R03	1	R718					
R5_0RS03	0603	R5_0RS03	2	R611	R704				
R5_100KS03	0603	R5_100KS03	1	R707					
R5_10KS03	0603	R5_10KS03	3	R609	R701	R702			
R5_10RS03	0603	R5_10RS03	10	R600	R601	R602	R603	R604	
				R605	R606	R607	R608	R700	
R5_180RS03	0603	R5_180RS03	1	R712					
R5_1K2S03	0603	R5_1K2S03	1	R709					
R5_1KS03	0603	R5_1KS03	2	R610	R703				
R5_200RS03	0603	R5_200RS03	1	R710					
R5_220RS03	0603	R5_220RS03	1	R717					
R5_27KS03	0603	R5_27KS03	1	R711					
R5_330RS03	0603	R5_330RS03	2	R715	R716				
R5_33RS03	0603	R5_33RS03	2	R200	R201				
R5_4K7S03	0603	R5_4K7S03	1	R708					
R5_5K1S03	0603	R5_5K1S03	1	R713					
R5_680RS03	0603	R5_680RS03	2	R400	R401				
RP	0603	RP	4	R203	R204	R205	R206		
SAM10F-1	BLUETOOTH_OS4	SAM10F	2	X206	X501				
SIL6	SIL6_SMD	SIL6	1	X801					
SW-PB	POUSMD4	SW_PB	1	SW800					
SW7914J	POUSMD4	SW7914J	1	SW700					
TMMBAT48	MINIMELF	TMMBAT_48	1	D704					
TPS2042D	SO8	TPS2042D	1	U300					
ULM2636	TSSOP20	ULM2636	1	U701					
USI4966DY	SO8	USI4966DY	1	U702					

Total Component count 145

NC Pins Report OS4

os4_gloss

Fri Dec 24 11:12:32 MET 2004

Ref Des	Device	Nb	Not Connected Pins										Remark
D600	DBAT54A	1	2										
RP600	CAY16_10	2	7	8									
SW700	SW7914J	2	3	4									
SW800	SW-PB	2	3	4									
U502	MAX232	4	7	8	9	10							
U701	ULM2636	1	9										
U800	PIC16F876AQFN	13	1	2	3	4	8	9	10	13	18	20	
			21	22	28								
X200	DDR-SODIMM-20	2	201		202								
X400	JST4_2MM-3	1	5										
X501	SAM10F-1	5	2	3	7	8	9						
X601	COMPACTFLASH	3	24	40		43							
X801	SIL6	1	4										

Total count 37

Power Pins Report OS4

os4_gloss

Fri Dec 24 11:12:33 MET 2004

Ref Des	Device	Name	Power Pins	Remark
U200	MAX3372E	GND	2	
U300	TPS2042D	GND	1 3 4	
U500	MAX3372E	GND	2	
U501	MAX232	GND	15	
U502	MAX232	GND	15	
U700	MAX1896	GND	2	
U701	ULM2636	GND	3 4 15 16 18	
U702	USI4966DY	GND	3	
U800	PIC16F876AQFN	GND	5 16	

Total count 9

Single Node Nets Report OS4

os4_gloss

Fri Dec 24 11:12:34 MET 2004

Netname	Node	Device	Remark
-BATTLOW/2	X200.90	DDR-SODIMM-20	
-CLKRUN/2	X200.131	DDR-SODIMM-20	
-CTS2/2	X200.67	DDR-SODIMM-20	
-DCD1/2	X200.43	DDR-SODIMM-20	
-DEVSEL/2	X200.125	DDR-SODIMM-20	
-DSR1/2	X200.45	DDR-SODIMM-20	
-DTR1/2	X200.55	DDR-SODIMM-20	
-EXTSMI/2	X200.96	DDR-SODIMM-20	
-FRAME/2	X200.137	DDR-SODIMM-20	
-GNT0/2	X200.185	DDR-SODIMM-20	
-GNT1/2	X200.181	DDR-SODIMM-20	
-GPE1/2	X200.92	DDR-SODIMM-20	
-INTA/2	X200.197	DDR-SODIMM-20	
-INTB/2	X200.199	DDR-SODIMM-20	
-IRDY/2	X200.135	DDR-SODIMM-20	
-LFRAME_X/2	X200.110	DDR-SODIMM-20	
-LOCK/2	X200.121	DDR-SODIMM-20	
-LPCPD_X/2	X200.112	DDR-SODIMM-20	
-PERR/2	X200.123	DDR-SODIMM-20	
-PME/2	X200.175	DDR-SODIMM-20	
-PORST/2	X200.86	DDR-SODIMM-20	
-PS_ON/2	X200.94	DDR-SODIMM-20	
-REQ0/2	X200.183	DDR-SODIMM-20	
-REQ1/2	X200.179	DDR-SODIMM-20	
-RI1/2	X200.57	DDR-SODIMM-20	
-RTS2/2	X200.63	DDR-SODIMM-20	
-SERR/2	X200.127	DDR-SODIMM-20	
-SMB_ALERT/2	X200.88	DDR-SODIMM-20	
-STOP/2	X200.129	DDR-SODIMM-20	
-TRDY/2	X200.133	DDR-SODIMM-20	
AC97_CLK/2	X200.3	DDR-SODIMM-20	
AC97_SDOOUT/2	X200.5	DDR-SODIMM-20	
AC97_SYNC/2	X200.11	DDR-SODIMM-20	
AC97_RESET/2	X200.13	DDR-SODIMM-20	
AD10/2	X200.107	DDR-SODIMM-20	
AD11/2	X200.109	DDR-SODIMM-20	
AD12/2	X200.111	DDR-SODIMM-20	
AD13/2	X200.113	DDR-SODIMM-20	
AD14/2	X200.115	DDR-SODIMM-20	
AD15/2	X200.119	DDR-SODIMM-20	
AD16/2	X200.139	DDR-SODIMM-20	
AD17/2	X200.143	DDR-SODIMM-20	
AD18/2	X200.147	DDR-SODIMM-20	
AD19/2	X200.149	DDR-SODIMM-20	
AD20/2	X200.151	DDR-SODIMM-20	
AD21/2	X200.153	DDR-SODIMM-20	
AD22/2	X200.155	DDR-SODIMM-20	
AD23/2	X200.157	DDR-SODIMM-20	
AD24/2	X200.161	DDR-SODIMM-20	
AD25/2	X200.163	DDR-SODIMM-20	
AD26/2	X200.165	DDR-SODIMM-20	
AD27/2	X200.167	DDR-SODIMM-20	
AD28/2	X200.169	DDR-SODIMM-20	
AD29/2	X200.171	DDR-SODIMM-20	
AD30/2	X200.173	DDR-SODIMM-20	
AD31/2	X200.177	DDR-SODIMM-20	
AD4/2	X200.93	DDR-SODIMM-20	
AD5/2	X200.95	DDR-SODIMM-20	

Single Node Nets Report OS4

os4_gloss

Fri Dec 24 11:12:34 MET 2004

Netname	Node	Device	Remark
AD6/2	X200.97	DDR-SODIMM-20	
AD7/2	X200.99	DDR-SODIMM-20	
AD8/2	X200.101	DDR-SODIMM-20	
AD9/2	X200.105	DDR-SODIMM-20	
B/2	X200.14	DDR-SODIMM-20	
B0/2	X200.62	DDR-SODIMM-20	
B1/2	X200.60	DDR-SODIMM-20	
B2/2	X200.58	DDR-SODIMM-20	
B3/2	X200.56	DDR-SODIMM-20	
B4/2	X200.54	DDR-SODIMM-20	
B5/2	X200.52	DDR-SODIMM-20	
BIASON/2	X200.76	DDR-SODIMM-20	
C/_BE0/2	X200.103	DDR-SODIMM-20	
C/_BE1/2	X200.117	DDR-SODIMM-20	
C/_BE2/2	X200.141	DDR-SODIMM-20	
C/_BE3/2	X200.159	DDR-SODIMM-20	
CLK1/2	X200.189	DDR-SODIMM-20	
CLK2/2	X200.191	DDR-SODIMM-20	
CLK3/2	X200.193	DDR-SODIMM-20	
CLK4/2	X200.195	DDR-SODIMM-20	
DE/2	X200.70	DDR-SODIMM-20	
DIGON/2	X200.78	DDR-SODIMM-20	
G/2	X200.12	DDR-SODIMM-20	
G0/2	X200.48	DDR-SODIMM-20	
G1/2	X200.46	DDR-SODIMM-20	
G2/2	X200.44	DDR-SODIMM-20	
G3/2	X200.42	DDR-SODIMM-20	
G4/2	X200.40	DDR-SODIMM-20	
G5/2	X200.38	DDR-SODIMM-20	
HSY/2	X200.18	DDR-SODIMM-20	
HSYNC/2	X200.66	DDR-SODIMM-20	
IDE_DRQ/2	X200.158	DDR-SODIMM-20	
IDE__AK/2	X200.150	DDR-SODIMM-20	
PAR/2	X200.145	DDR-SODIMM-20	
PCI__RST/2	X200.187	DDR-SODIMM-20	
PXA_GPIO1/2	X200.71	DDR-SODIMM-20	
R/2	X200.10	DDR-SODIMM-20	
R0/2	X200.34	DDR-SODIMM-20	
R1/2	X200.32	DDR-SODIMM-20	
R2/2	X200.30	DDR-SODIMM-20	
R3/2	X200.28	DDR-SODIMM-20	
R4/2	X200.26	DDR-SODIMM-20	
R5/2	X200.24	DDR-SODIMM-20	
SCLK/2	X200.72	DDR-SODIMM-20	
SERIRQ_X/2	X200.114	DDR-SODIMM-20	
S_ATA_A/2	X200.75	DDR-SODIMM-20	
S_ATA_B/2	X200.81	DDR-SODIMM-20	
S_ATA__A/2	X200.77	DDR-SODIMM-20	
S_ATA__B/2	X200.79	DDR-SODIMM-20	
TV_CP_OUT/2	X200.6	DDR-SODIMM-20	
USB3_DATA/2	X200.118	DDR-SODIMM-20	
USB3__DATA/2	X200.120	DDR-SODIMM-20	
VSX/2	X200.20	DDR-SODIMM-20	
VSXNC/2	X200.68	DDR-SODIMM-20	

Total Nets count 112