

# EPUCKPROD\_C

LSRO1 F.Mondada

Phone: 37357

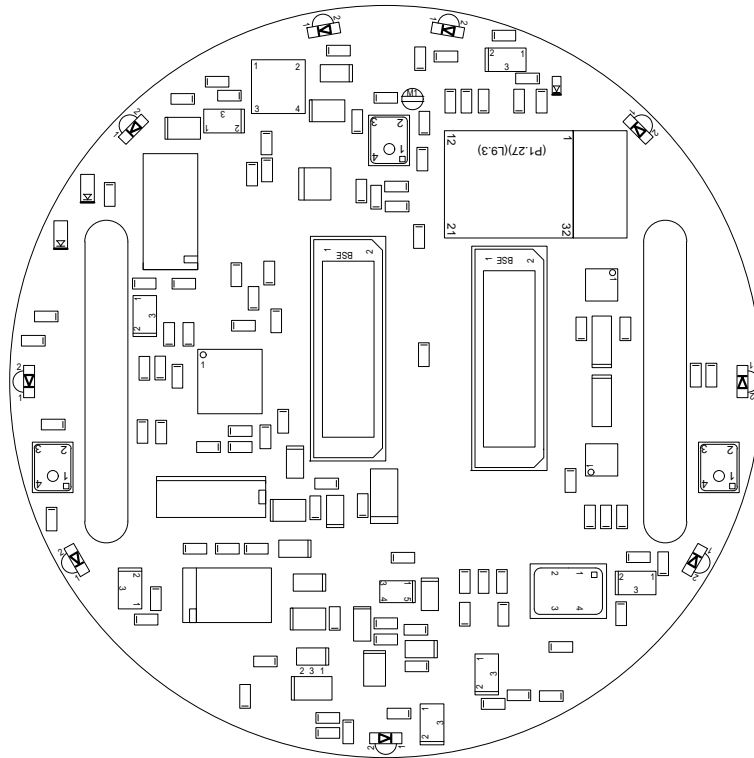
Wed Apr 30 14:49:57 MET DST 2008

MFG\_DATE: 28.04.2008

QUANTITY: 1

SOLDERMASK: mtop mbot

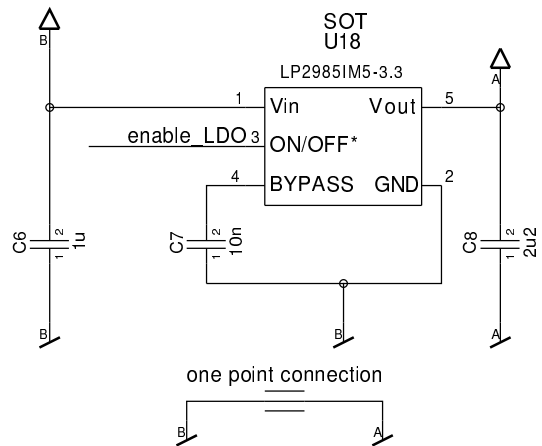
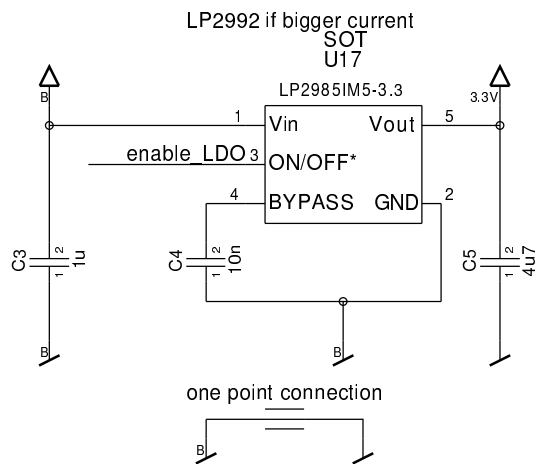
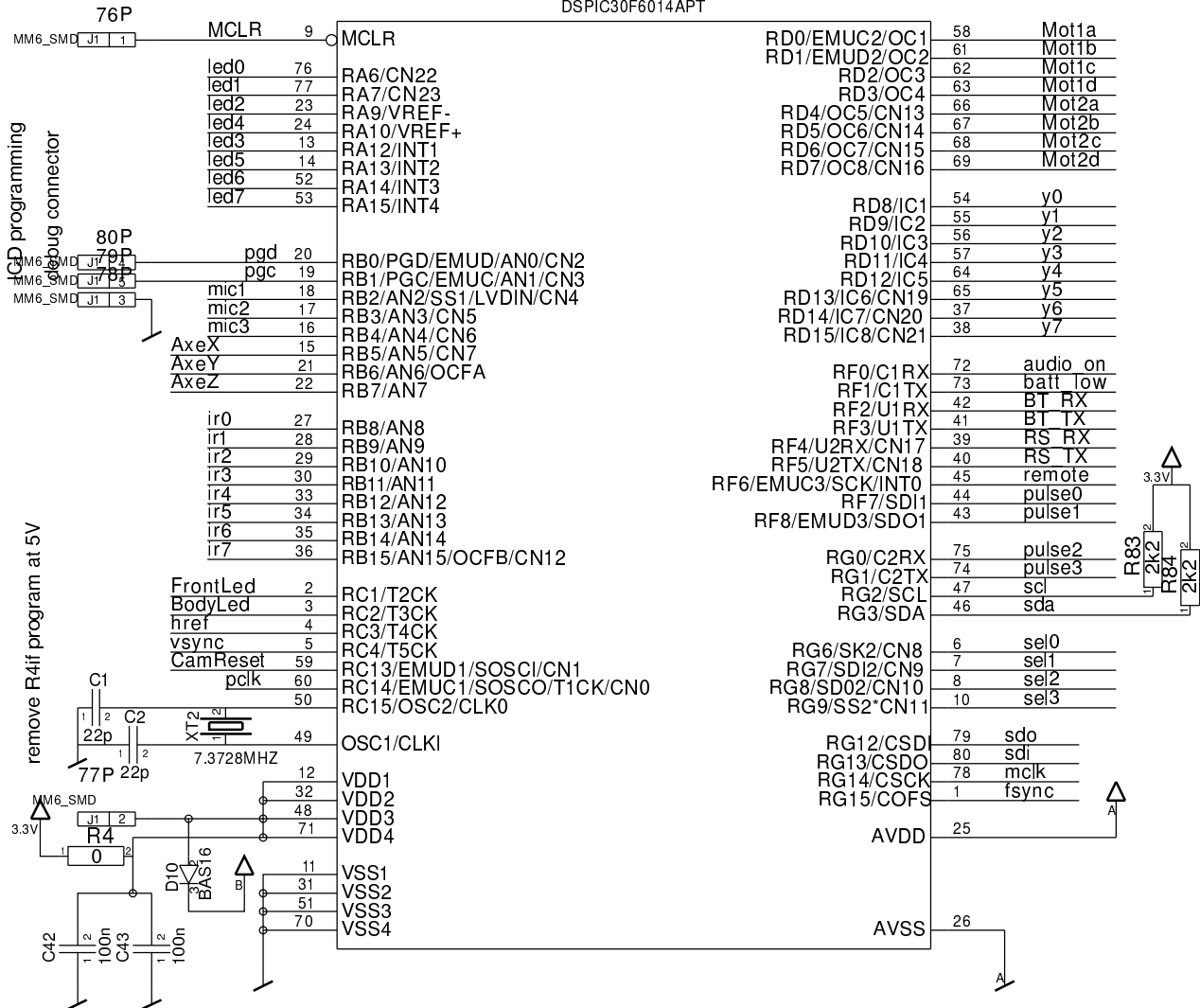
MATERIAL: FR4 : 1.6 mm



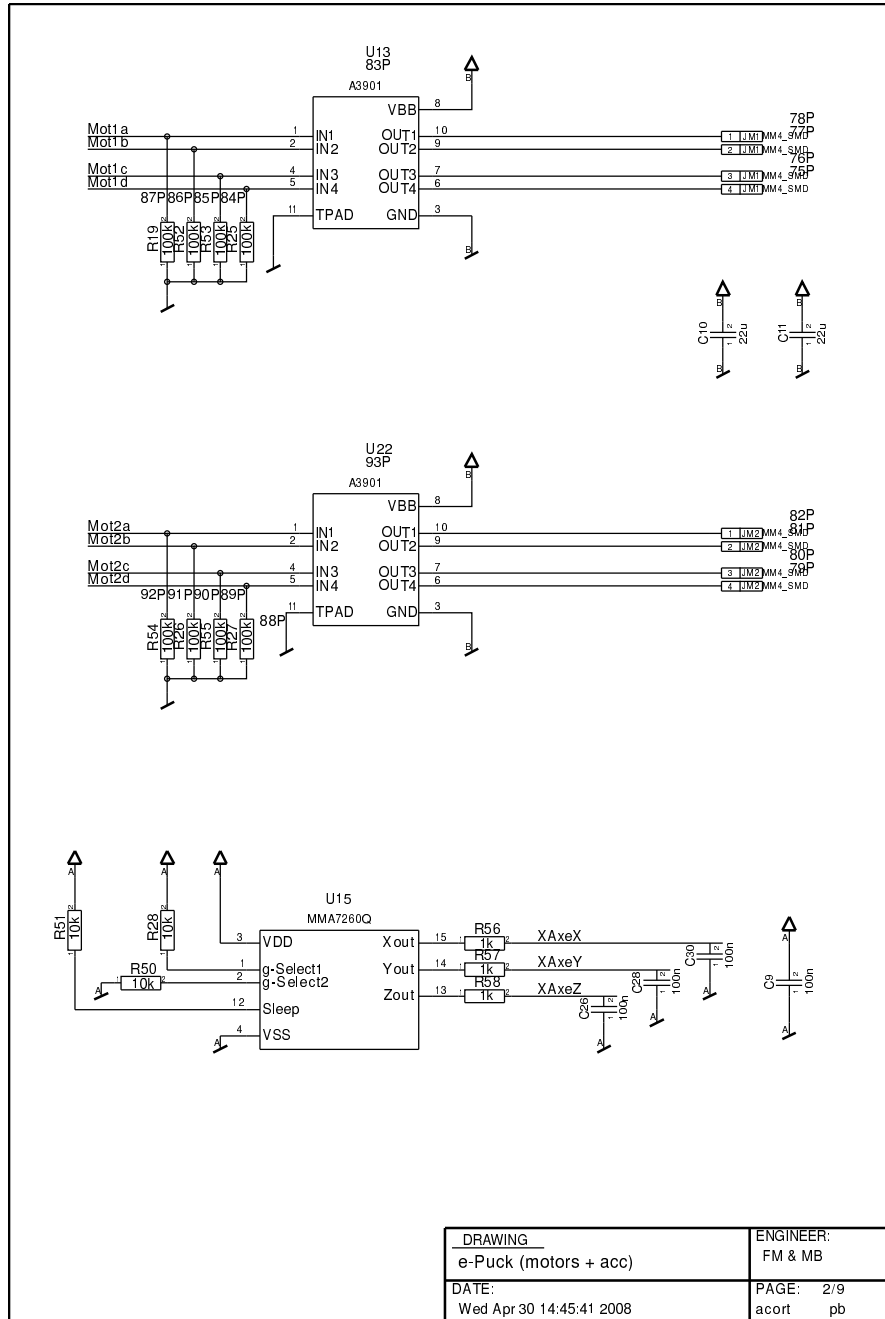
CONTENTS	PAGE
Root Schema epufl	2 - 10
Xref epufl	11
Drill	12
Etch	13
OutDetail_Bottom	14
OutDetail_Top	15
Outline_Top	16
Gerber_ptop	17
Gerber_mtop	18
Gerber_top	19
Gerber_gnd	20
Gerber_vcc	21
Gerber_bot	22
Gerber_mbot	23

CONTENTS	PAGE
Gerber_pbot	24
Gerber_cont	25
Component Report	26 - 29
BOM Report	30 - 31
NC-Pins Report	32
Power-Pins Report	33 - 34
Single Node Nets	35

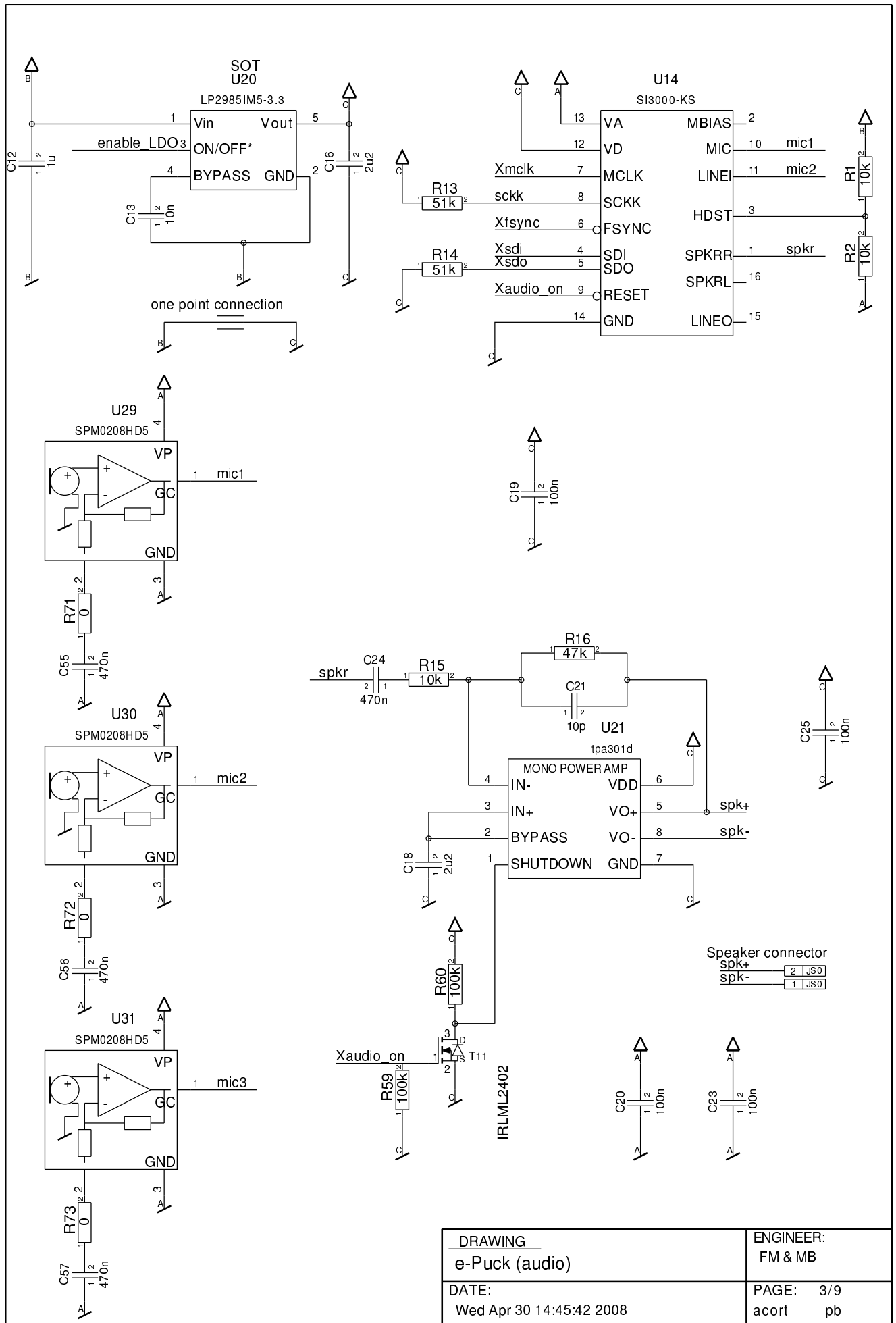
NO  
U16  
DSPIC30F6014APT



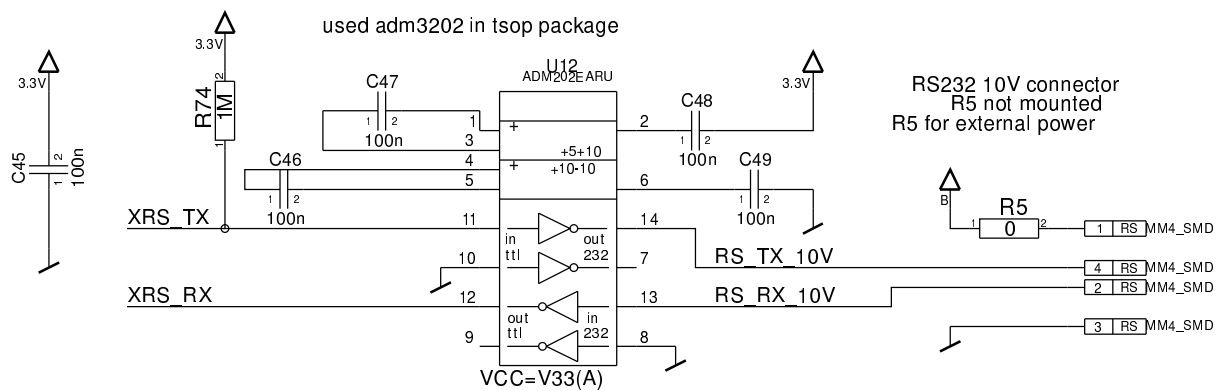
DRAWING e-Puck V:c (processor)	ENGINEER: FM & MB
DATE: Wed Apr 30 14:45:41 2008	PAGE: 1/9 acort pb



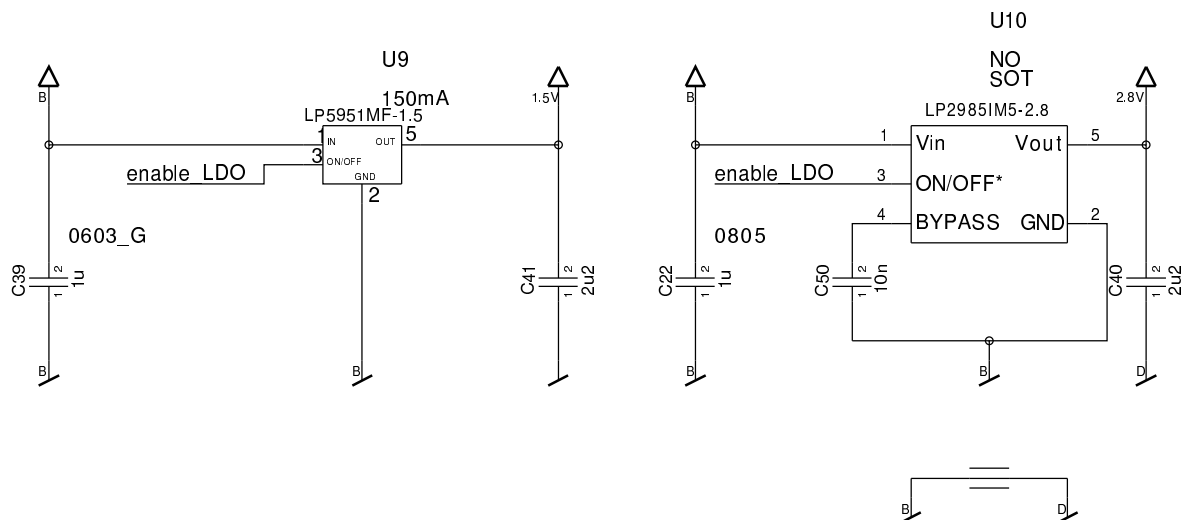
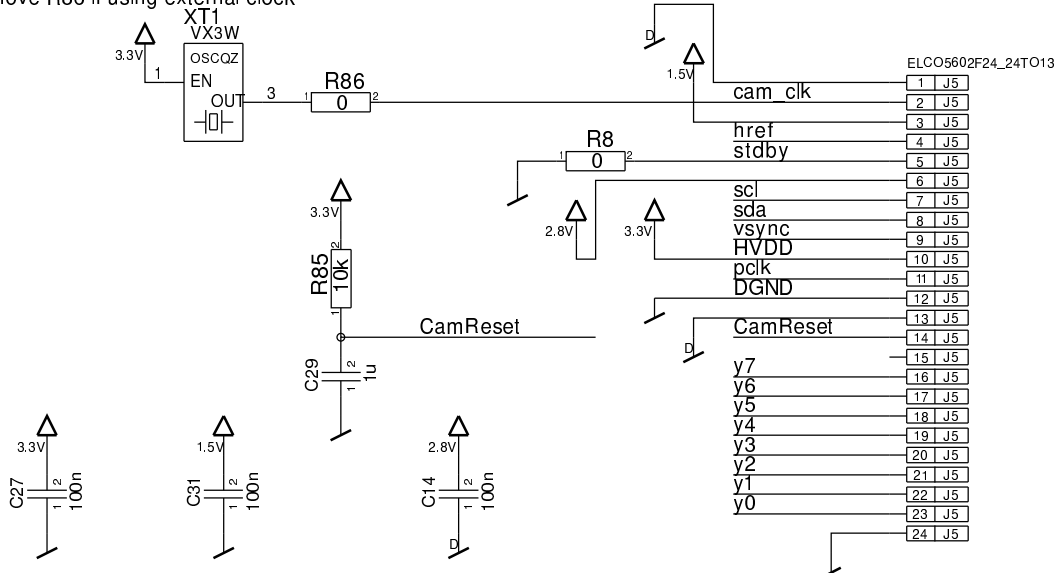
DRAWING e-Puck (motors + acc)	ENGINEER: FM & MB
DATE: Wed Apr 30 14:45:41 2008	PAGE: 2/9 acort pb



DRAWING	ENGINEER:
e-Puck (audio)	FM & MB
DATE:	PAGE: 3/9
Wed Apr 30 14:45:42 2008	acort pb

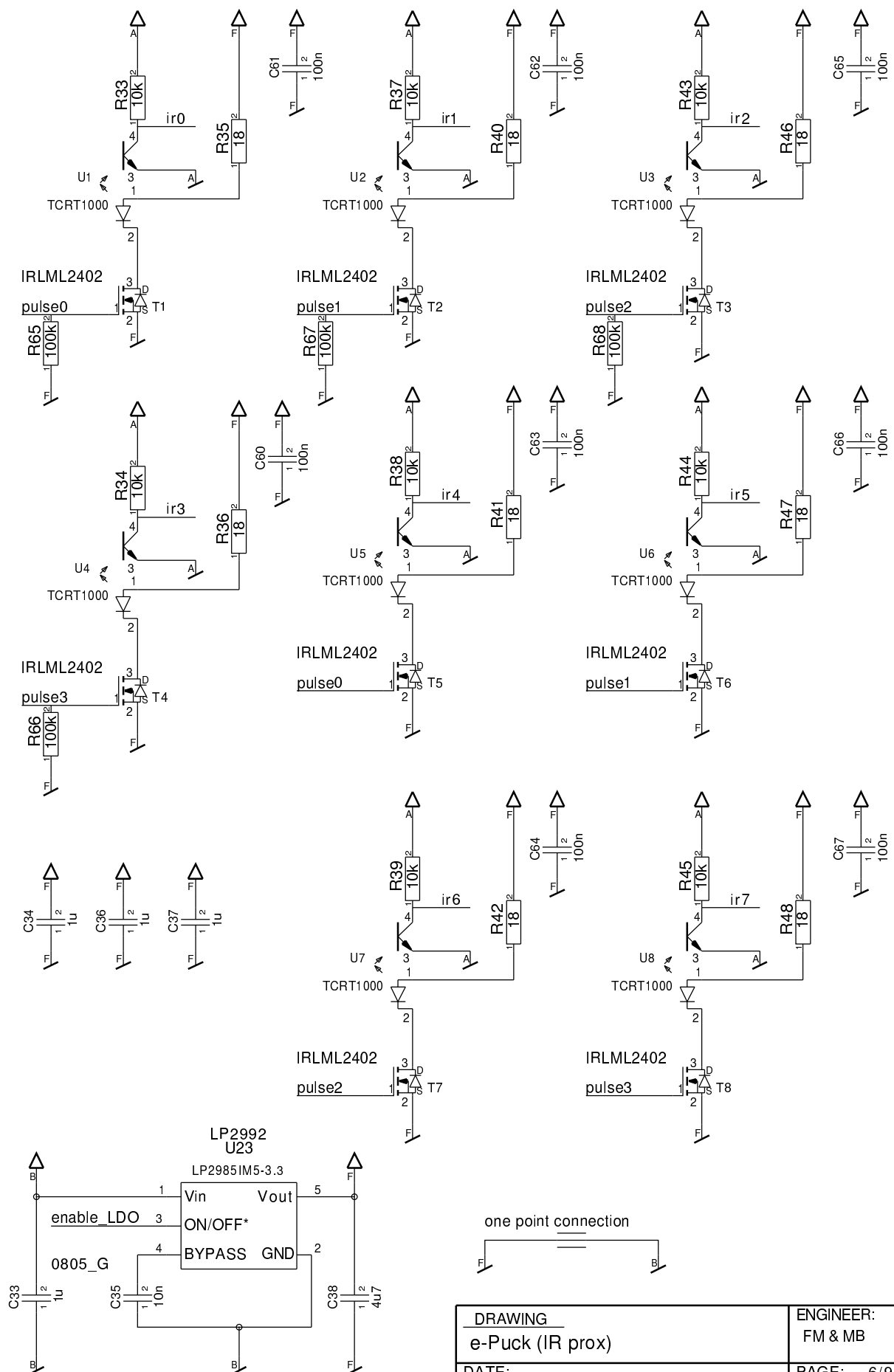


remove R86 if using external clock



DRAWING	ENGINEER:
e-Puck (RS + camera)	FM & MB
DATE:	PAGE: 4/9
Wed Apr 30 14:45:42 2008	acort pb

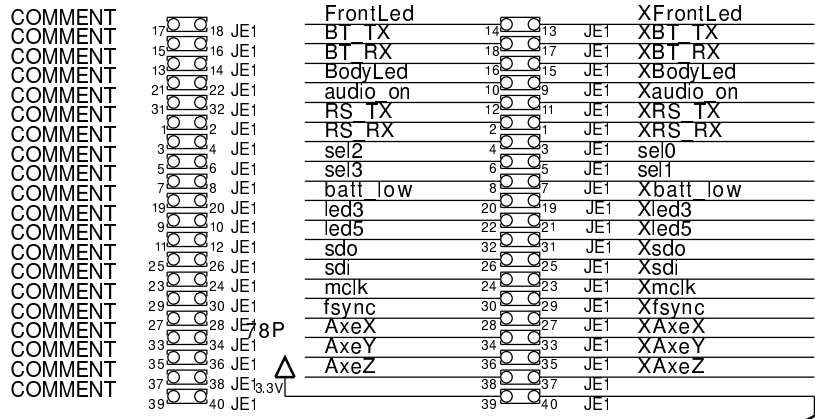




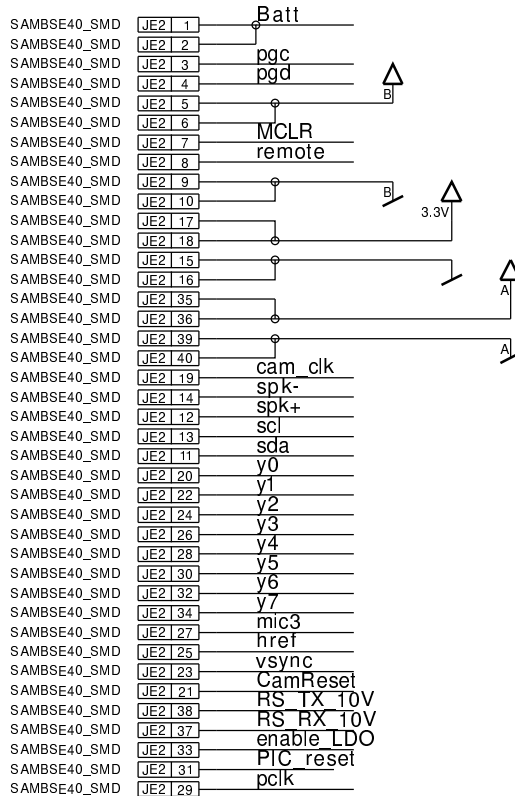
DRAWING e-Puck (IR prox)	ENGINEER: FM & MB
DATE: Wed Apr 30 14:45:43 2008	PAGE: 6/9 acort pb

to be jumped by a connector with shorts 1-2 3-4 etc

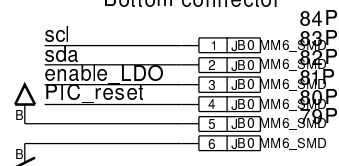
excepted 5-6 7-8 39-40  
SAMBSE40\_SMD



#### Extension connector



#### Bottom connector



DRAWING  
e-Puck (ext conn)

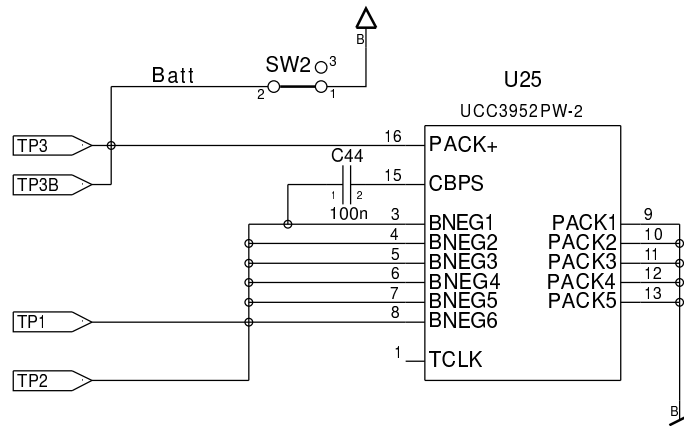
DATE:  
Wed Apr 30 14:45:43 2008

ENGINEER:  
FM & MB

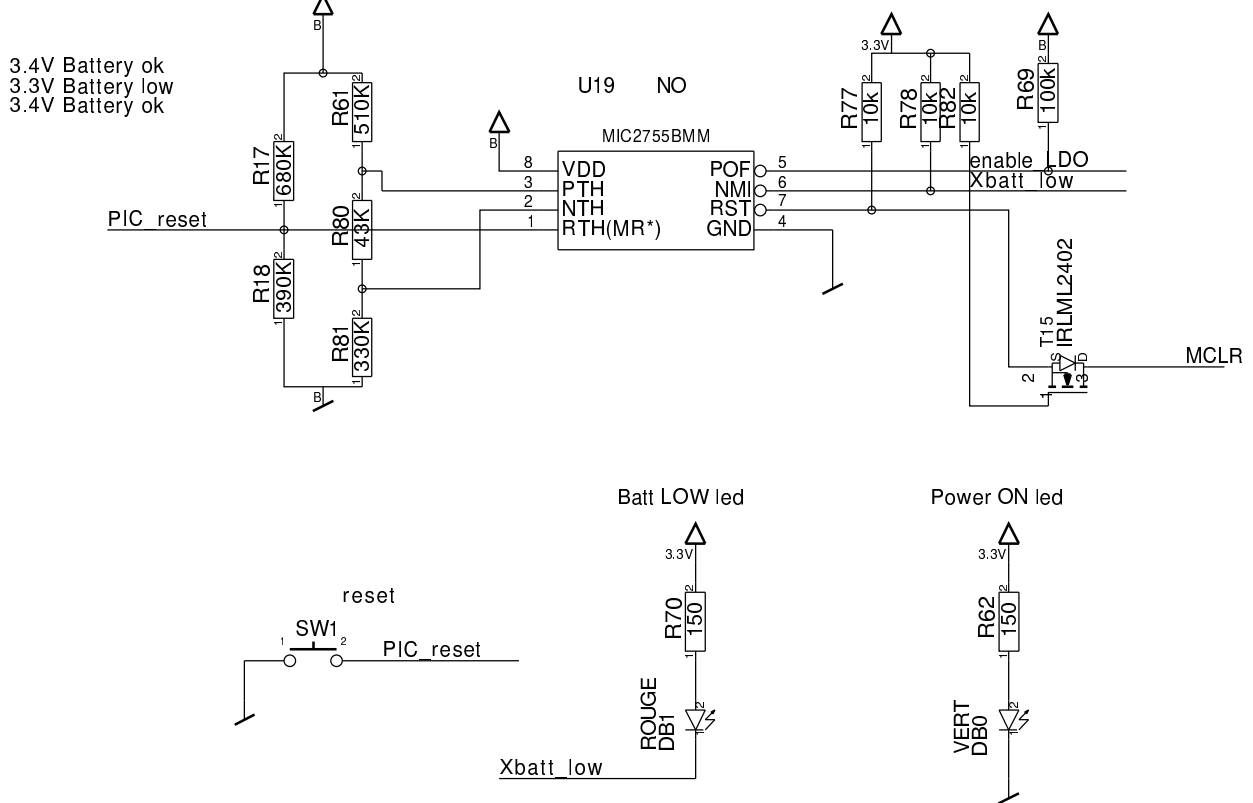
PAGE: 7/9  
acort pb



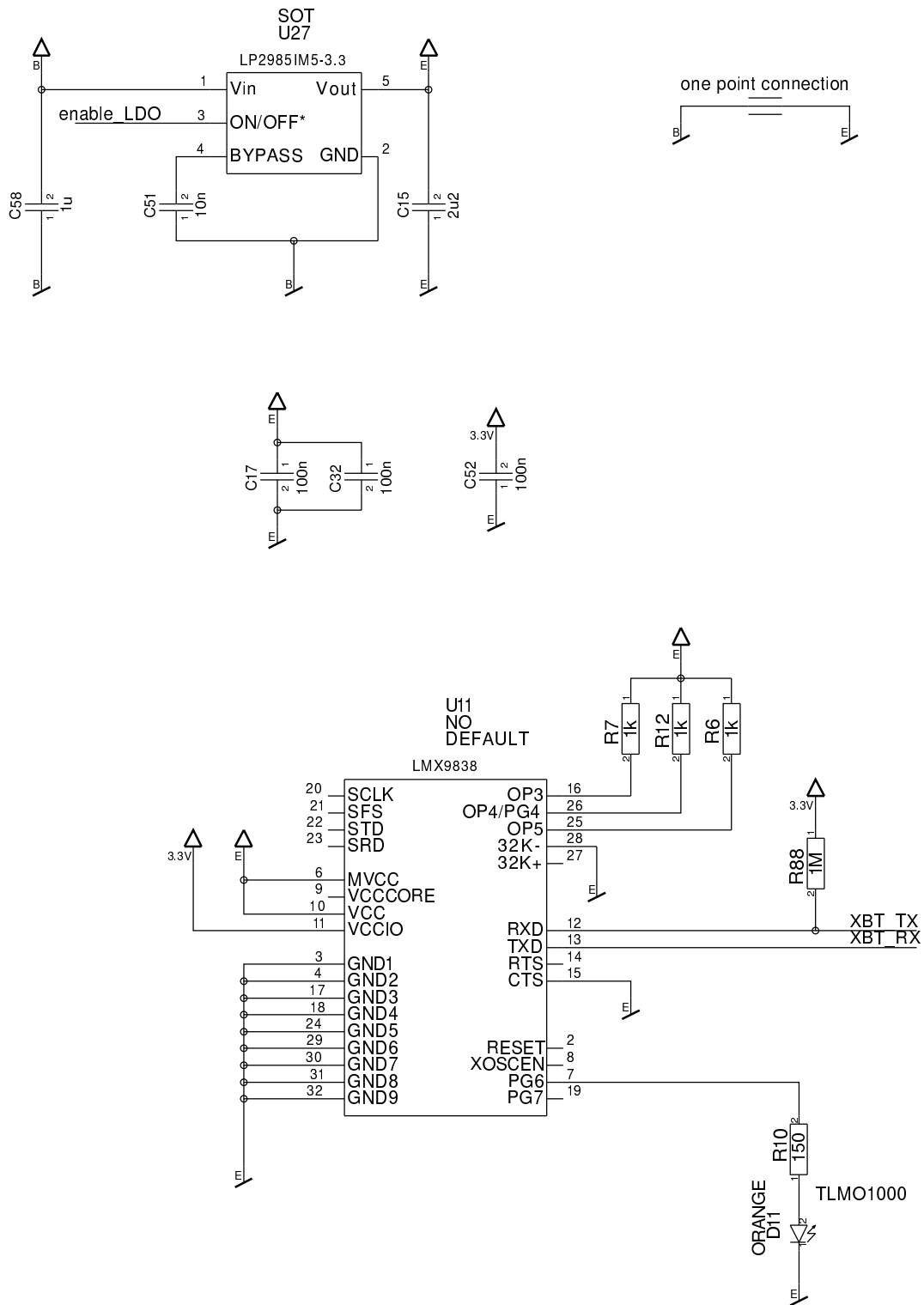
## Battery protection



Battery level controller



e-Puck (battery prot.)	ENGINEER: FM & MB
DATE:	PAGE: 8 / 9



e-Puck(Bluetooth)	ENGINEER: mb/fm/gc
DATE:	PAGE: 9/9

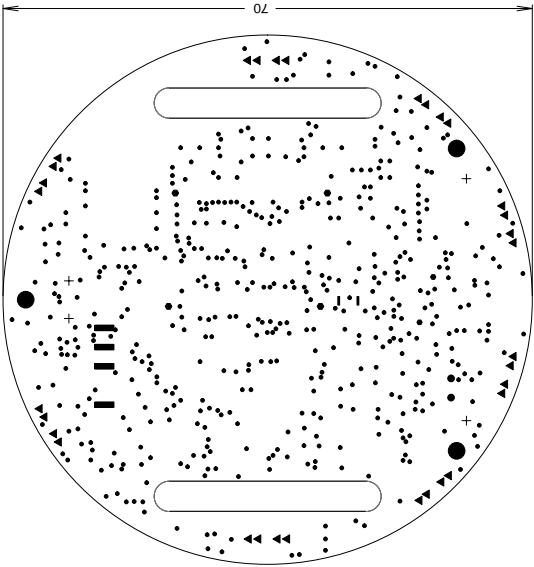
# Signal Page Ref EPUCKPROD\_C

epufl

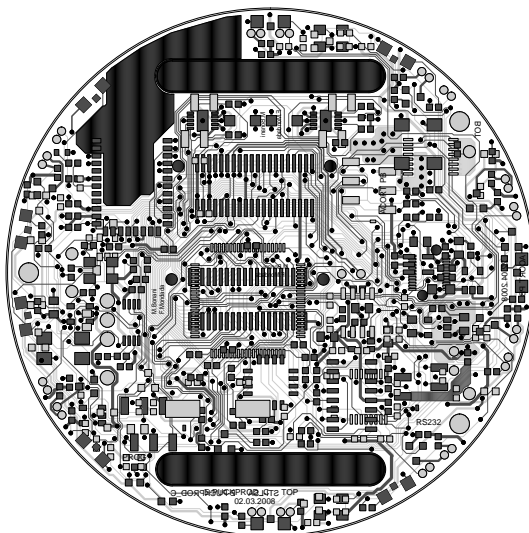
Wed Apr 30 14:50:05 MET DST 2008

Ref Des	Pages	Ref Des	Pages
audio_on	1 7	RS_TX_10V	4 7
AxeX	1 7	sckk	3
AxeY	1 7	scl	1 4 7 7
AxeZ	1 7	sda	1 4 7 7
Batt	7 8	sdi	1 7
batt_low	1 7	sdo	1 7
BodyLed	1 7	sel0	1 7
BT_RX	1 7	sel1	1 7
BT_TX	1 7	sel2	1 7
CamReset	1 4 4 7	sel3	1 7
cam_clk	4 7	spk+	3 3 7
DGND	4	spk-	3 3 7
enable_LDO	1 1 3 4 4 6 7 7 8 9	spkr	3 3
FrontLed	1 7	stdby	4
fsync	1 7	vsync	1 4 7
href	1 4 7	Xaudio_on	3 3 7
HVDD	4	XAxeX	2 7
ir0	1 6	XAxeY	2 7
ir1	1 6	XAxeZ	2 7
ir2	1 6	Xbatt_low	7 8 8
ir3	1 6	XBodyLed	5 7
ir4	1 6	XBT_RX	7 9
ir5	1 6	XBT_TX	7 9
ir6	1 6	XFrontLed	5 7
ir7	1 6	Xfsync	3 7
led0	1 5	Xled3	5 7
led1	1 5	Xled5	5 7
led2	1 5	Xmclk	3 7
led3	1 7	XRS_RX	4 7
led4	1 5	XRS_TX	4 7
led5	1 7	Xsdi	3 7
led6	1 5	Xsdo	3 7
led7	1 5	y0	1 4 7
mclk	1 7	y1	1 4 7
MCLR	1 7 8	y2	1 4 7
mic1	1 3 3	y3	1 4 7
mic2	1 3 3	y4	1 4 7
mic3	1 3 7	y5	1 4 7
Mot1a	1 2	y6	1 4 7
Mot1b	1 2	y7	1 4 7
Mot1c	1 2	Total Signals count 98	
Mot1d	1 2		
Mot2a	1 2		
Mot2b	1 2		
Mot2c	1 2		
Mot2d	1 2		
pclk	1 4 7		
pgc	1 7		
pgd	1 7		
PIC_reset	7 7 8 8		
pulse0	1 6 6		
pulse1	1 6 6		
pulse2	1 6 6		
pulse3	1 6 6		
remote	1 7		
RS_RX	1 7		
RS_RX_10V	4 7		
RS_TX	1 7		

DRILL CHART			
FIGURE	SIZE	PLATED	QTY
•	0.25	PLATED	519
▪	0.711	PLATED	2
▲	0.75	PLATED	32
●	0.787	PLATED	2
■	1.1	PLATED	4
+	1.2	PLATED	4
●	2.2	PLATED	3
•	0.7	NOT PLATED	2
•	0.9	NOT PLATED	4



Solder mask is same size as copper.  
 It can be increased to suit mask technology,  
 but not more than 150 microns.



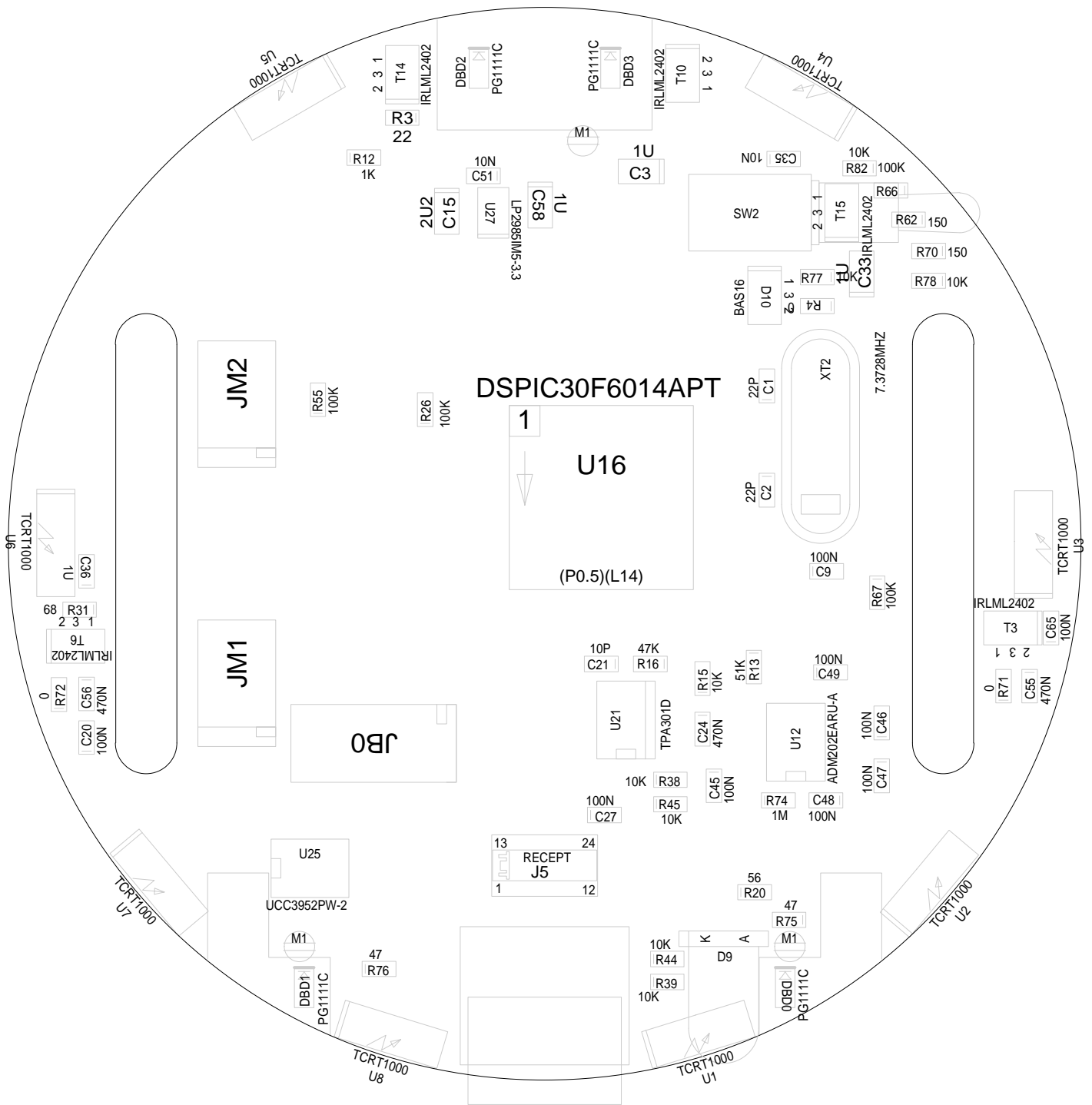
TITRE:EPUCKPROD\_C

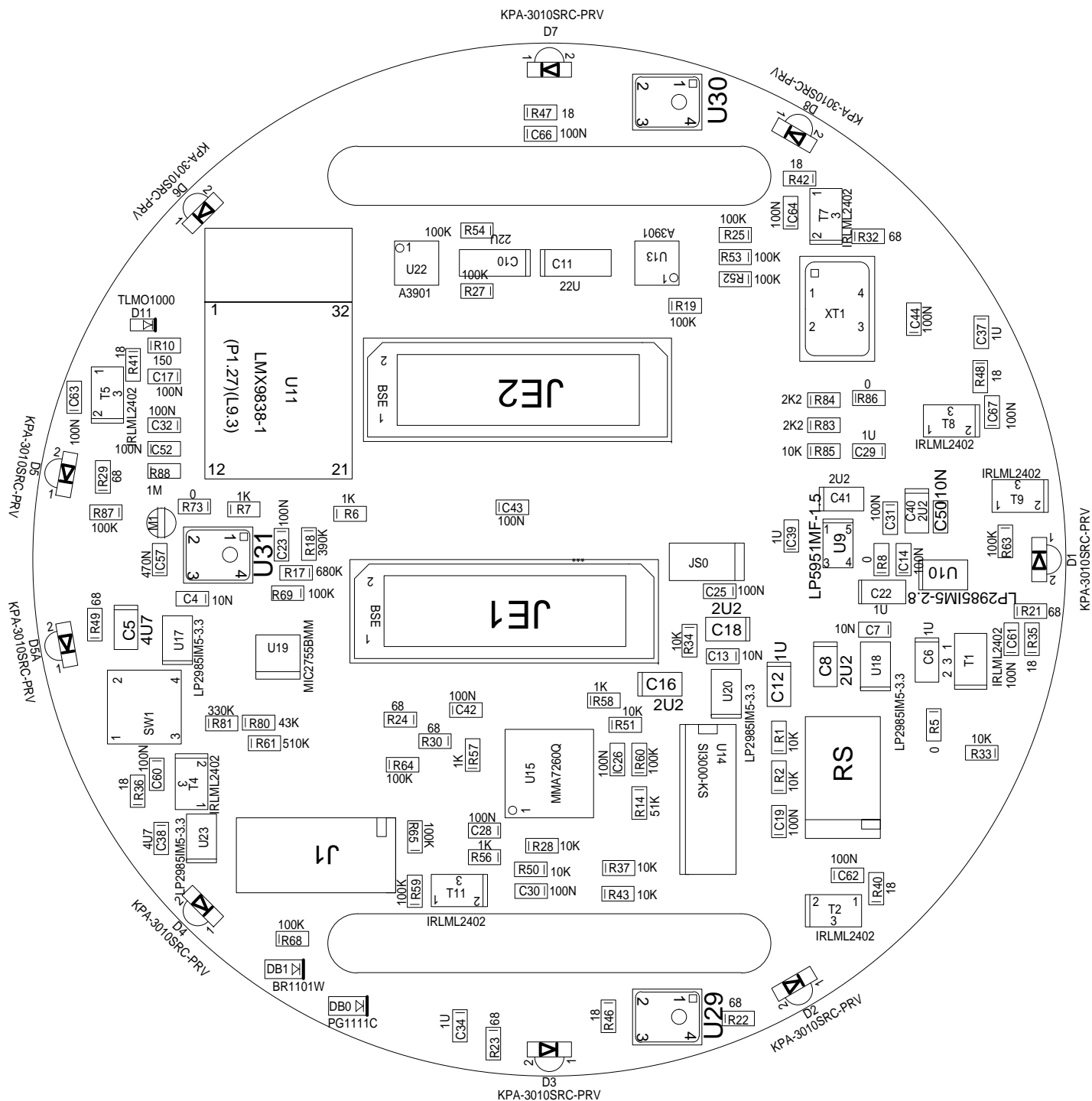
LABORATOIRE:STI-LSA2

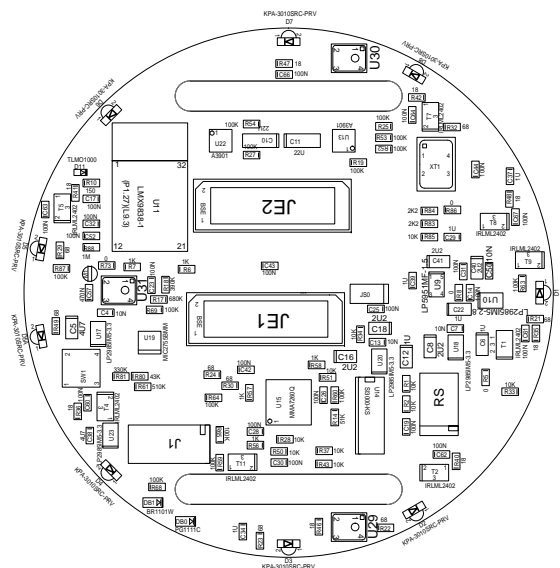
DATE:2.03.2008

ENGINEER:F.Mondada M.Bonani

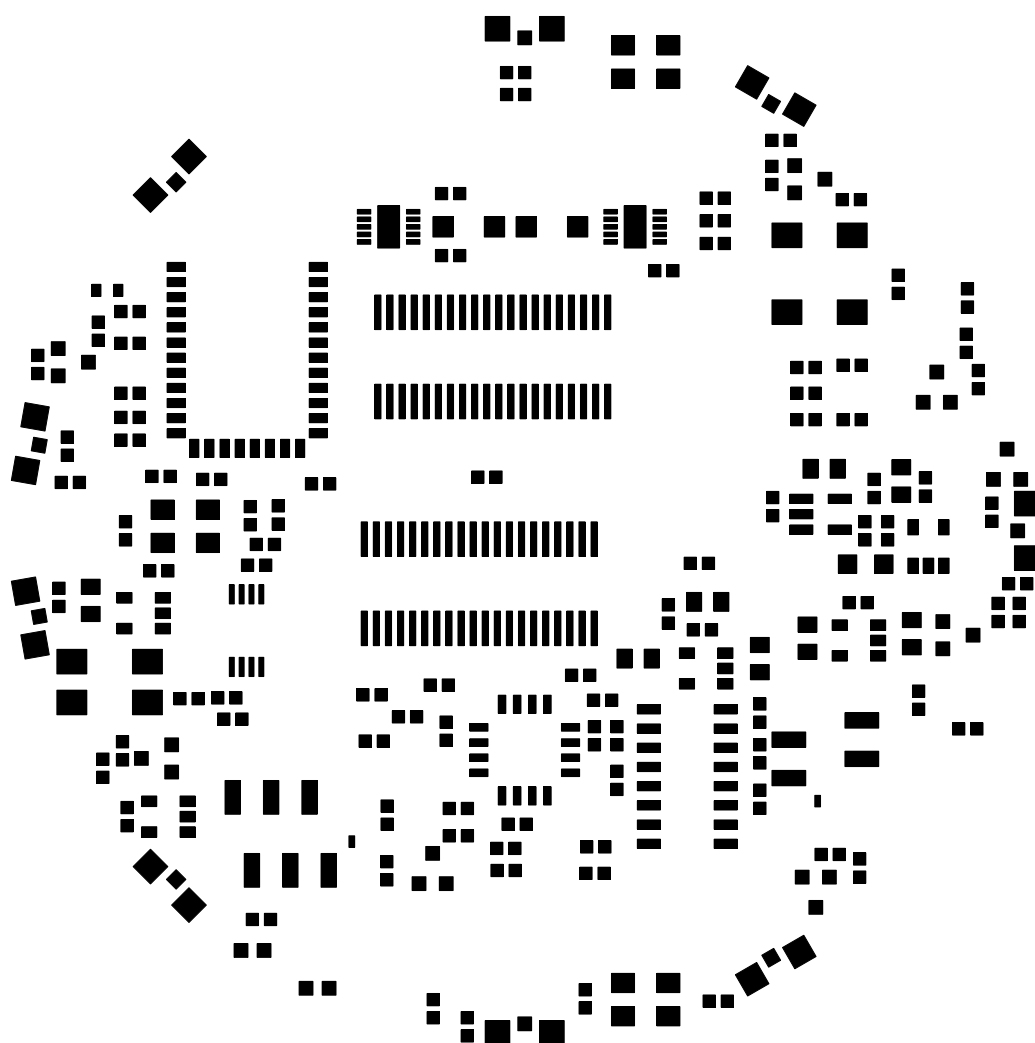
EPFL-ACORT-PB

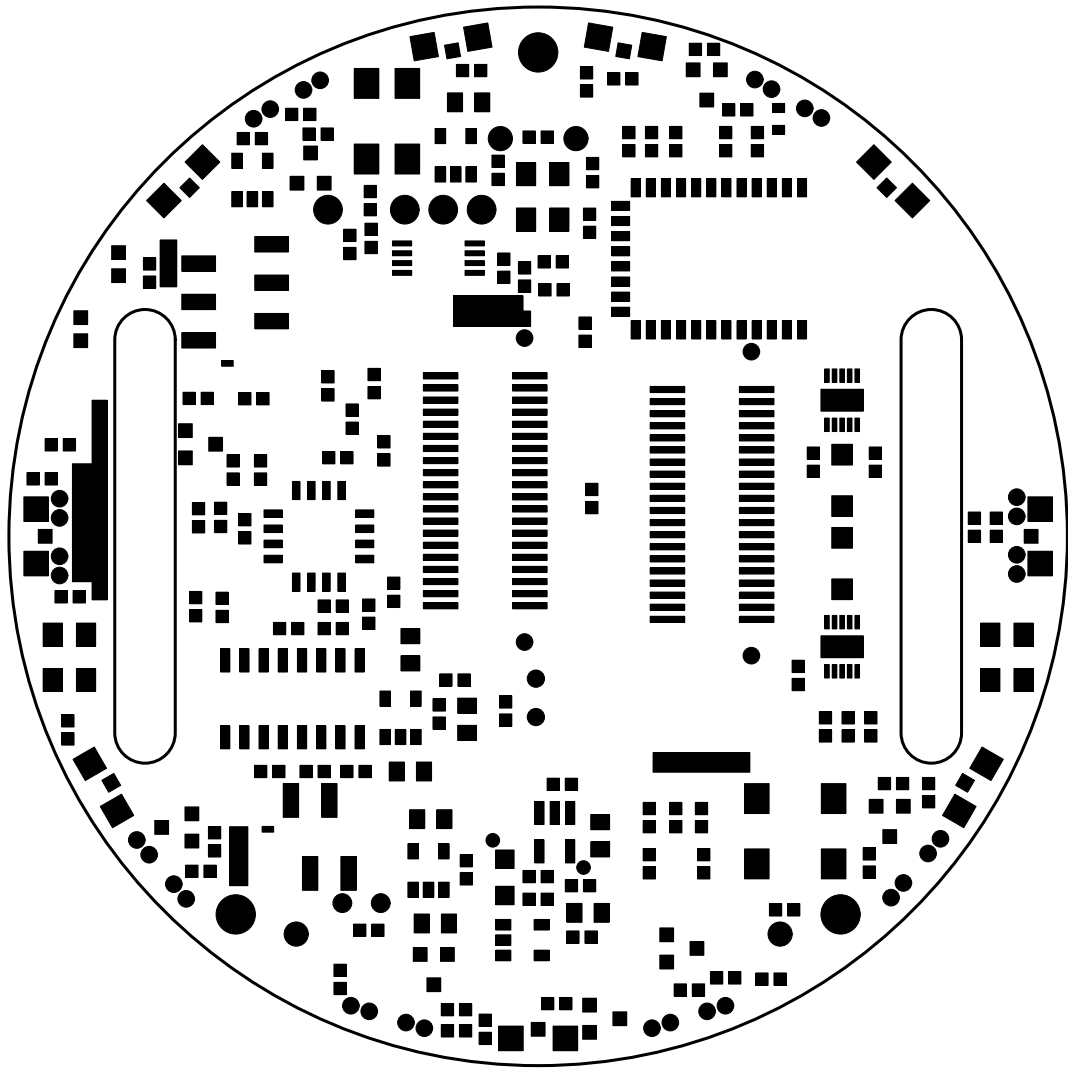


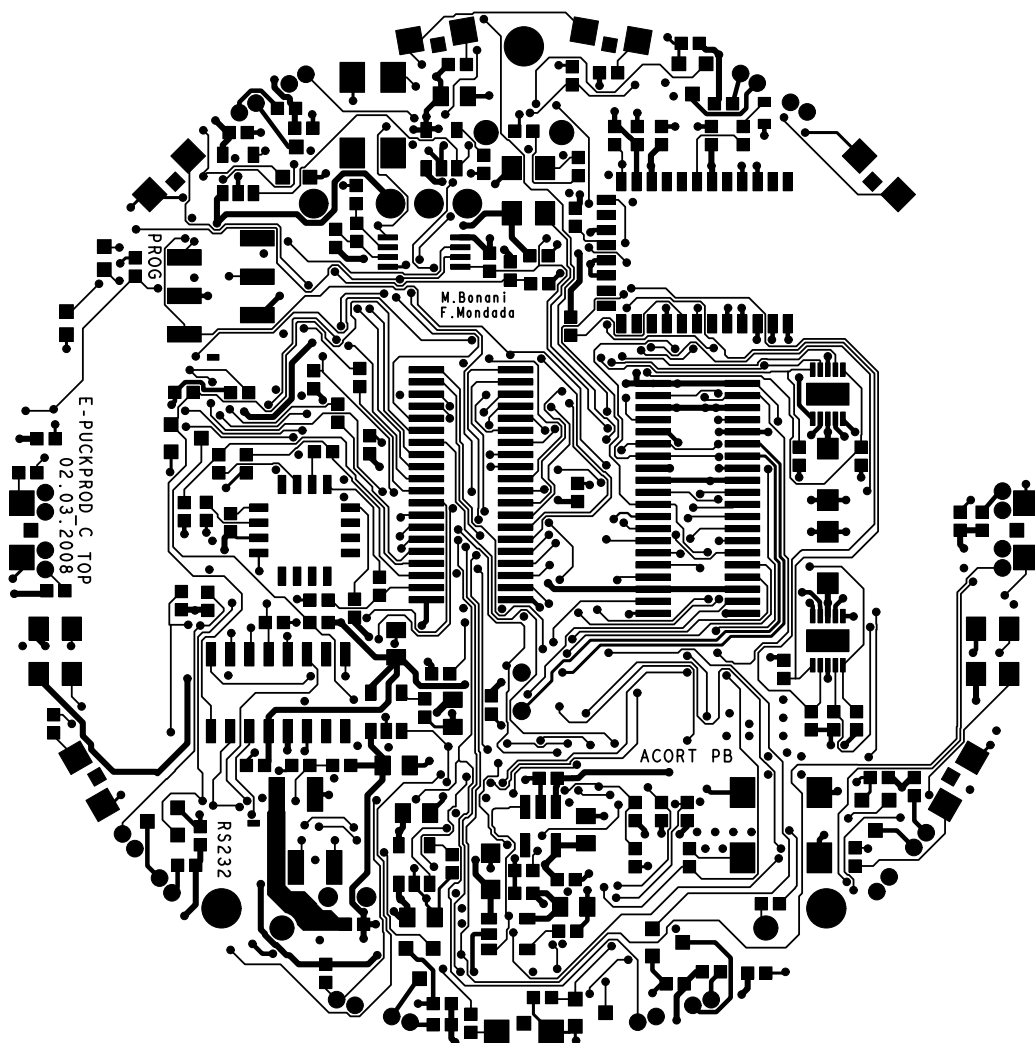


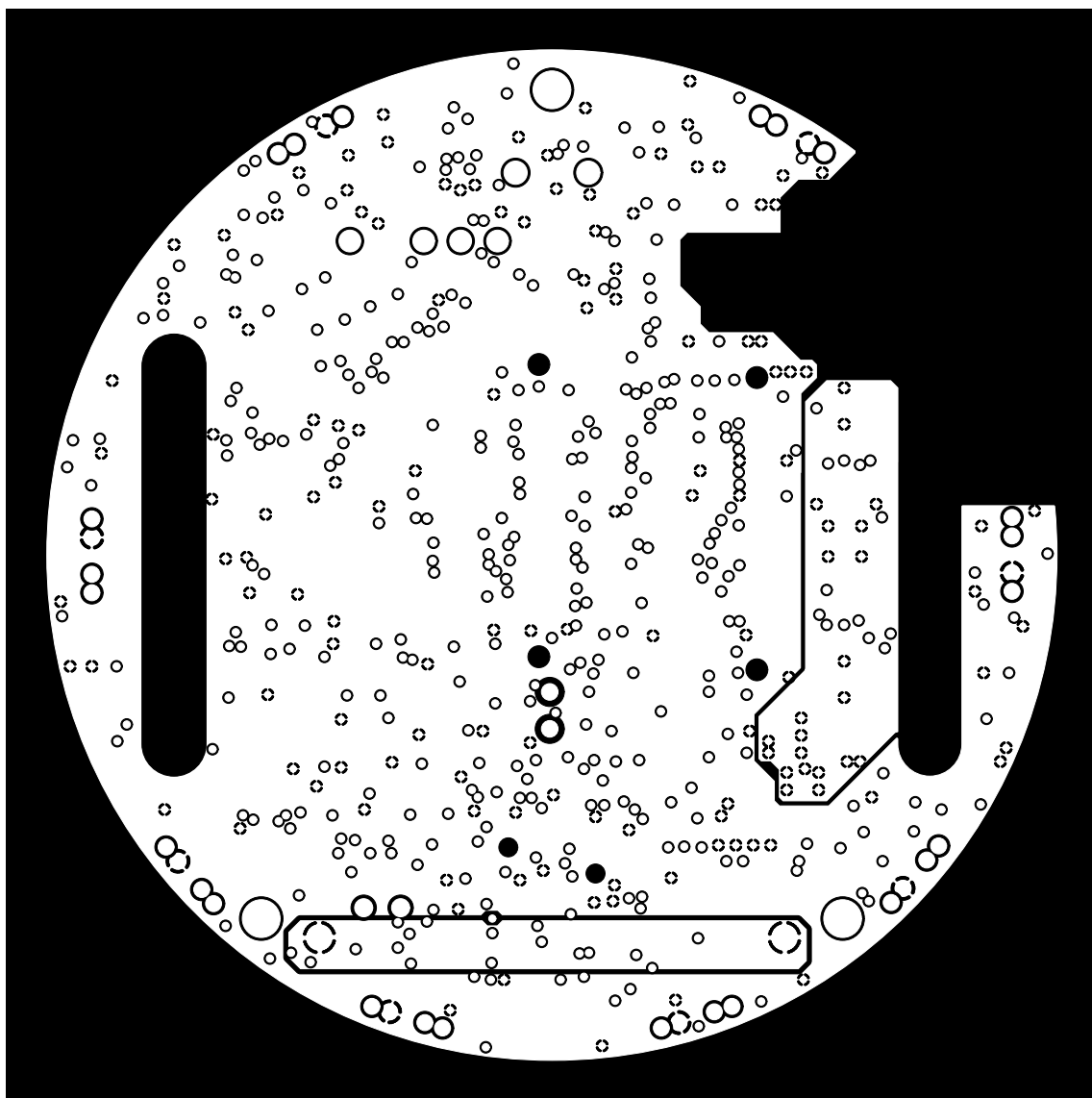


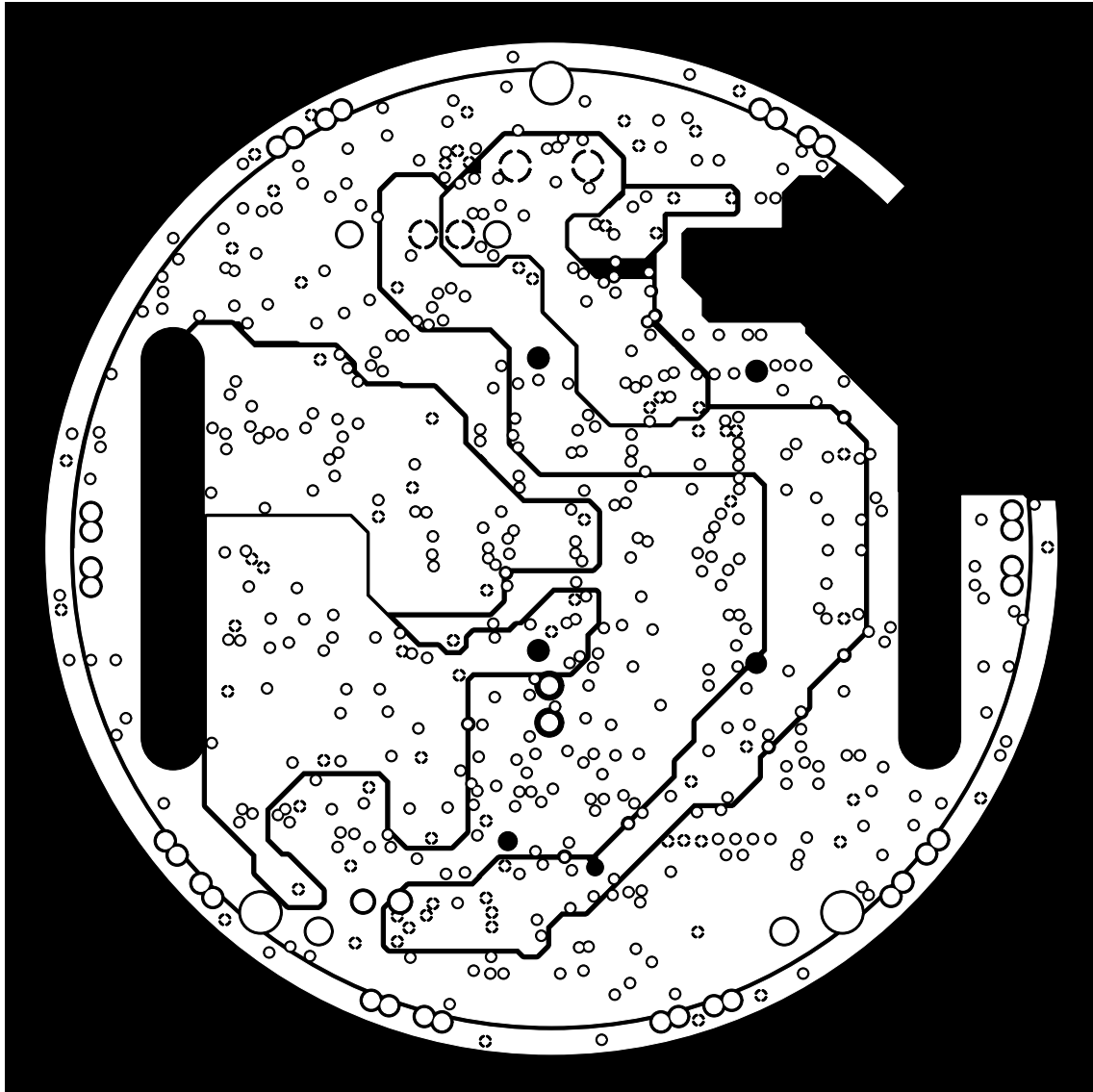


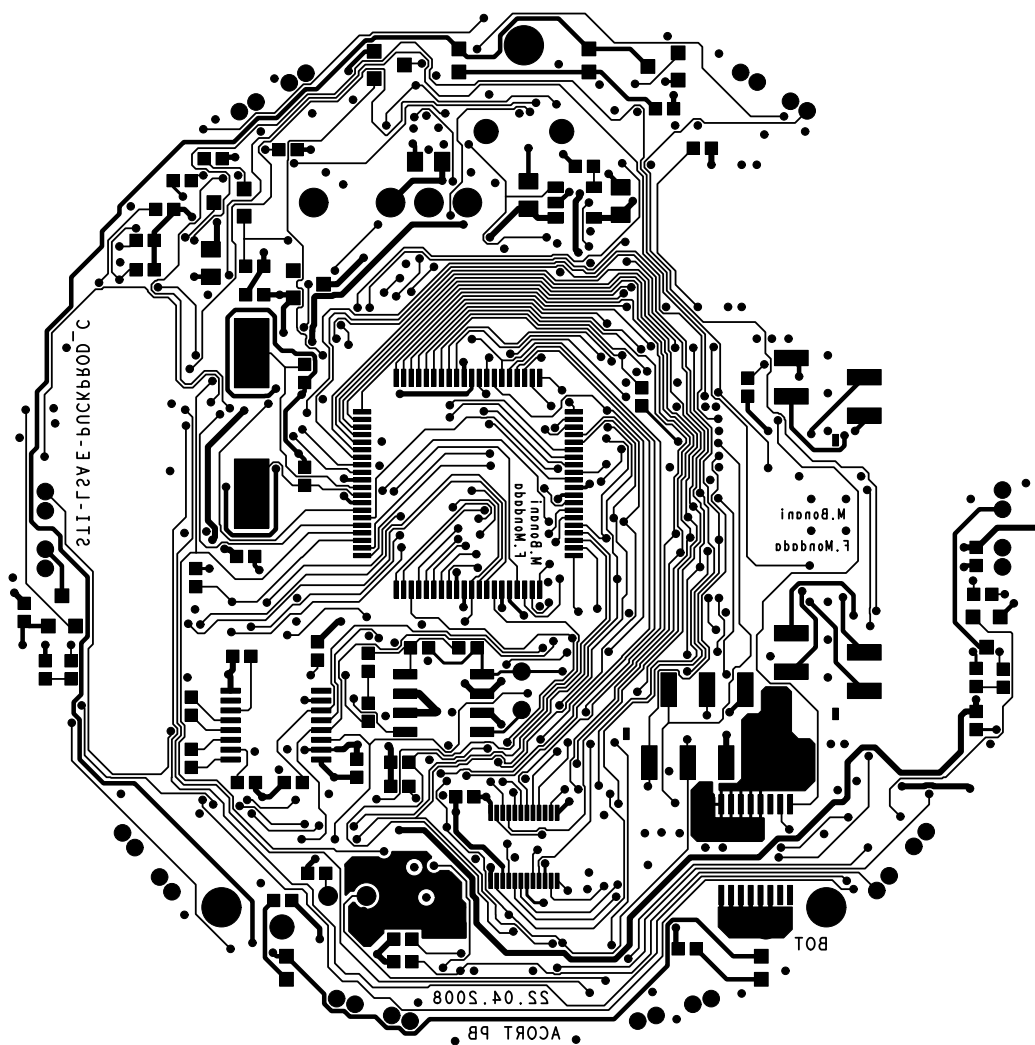


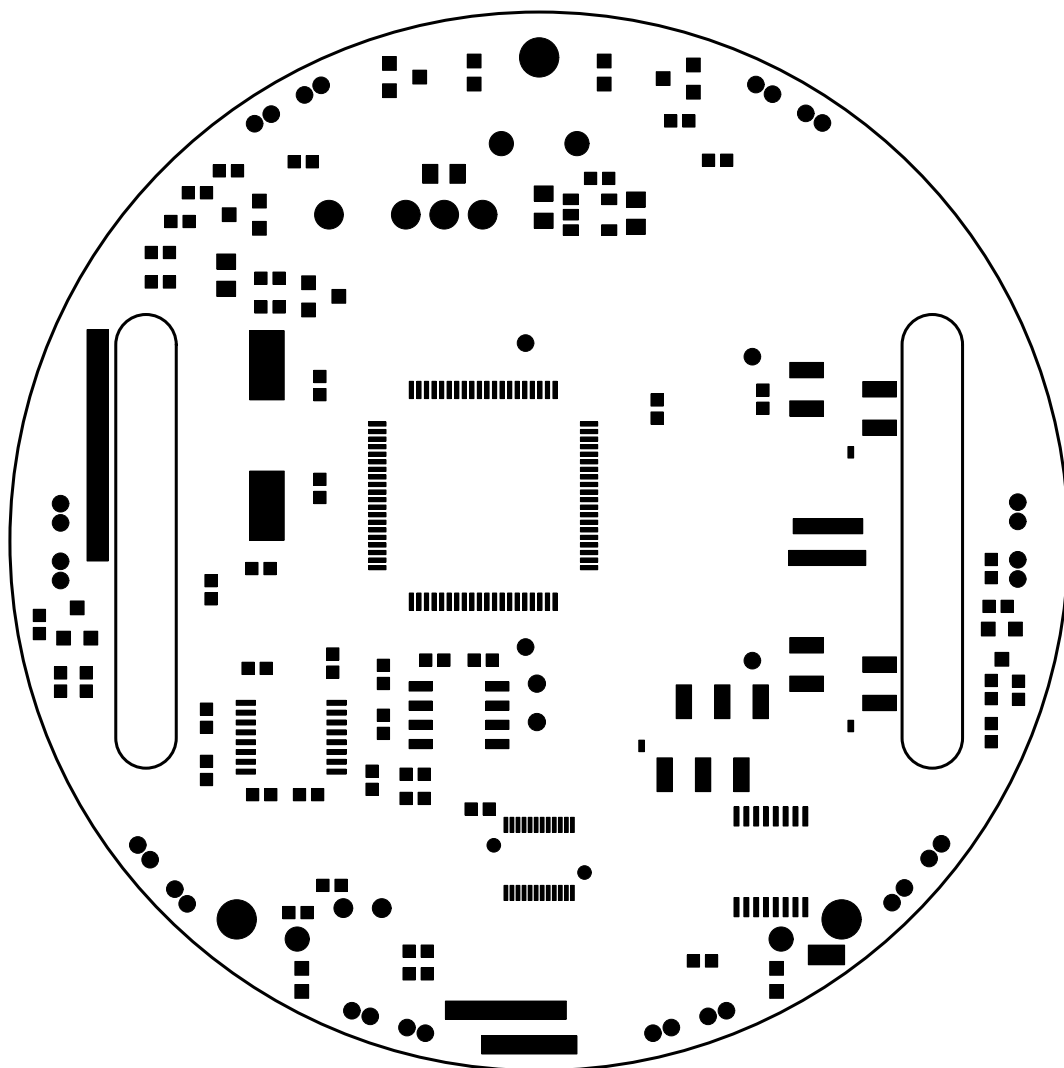


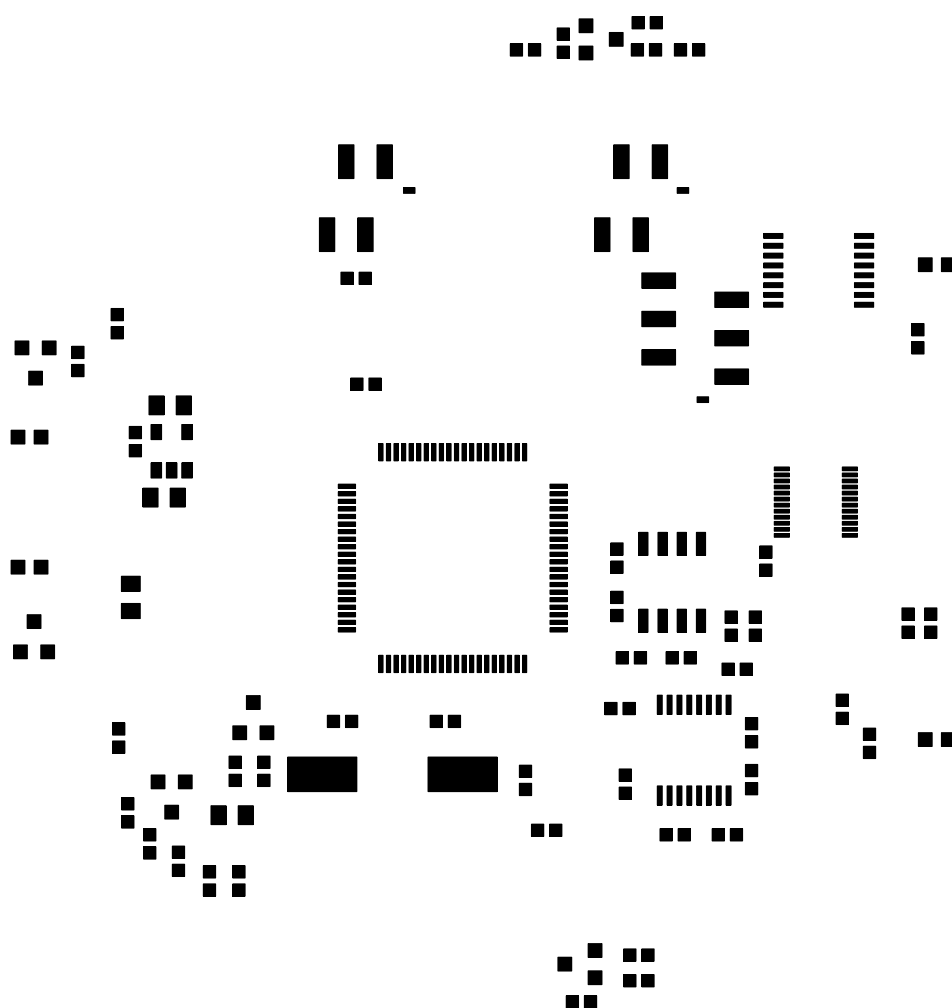




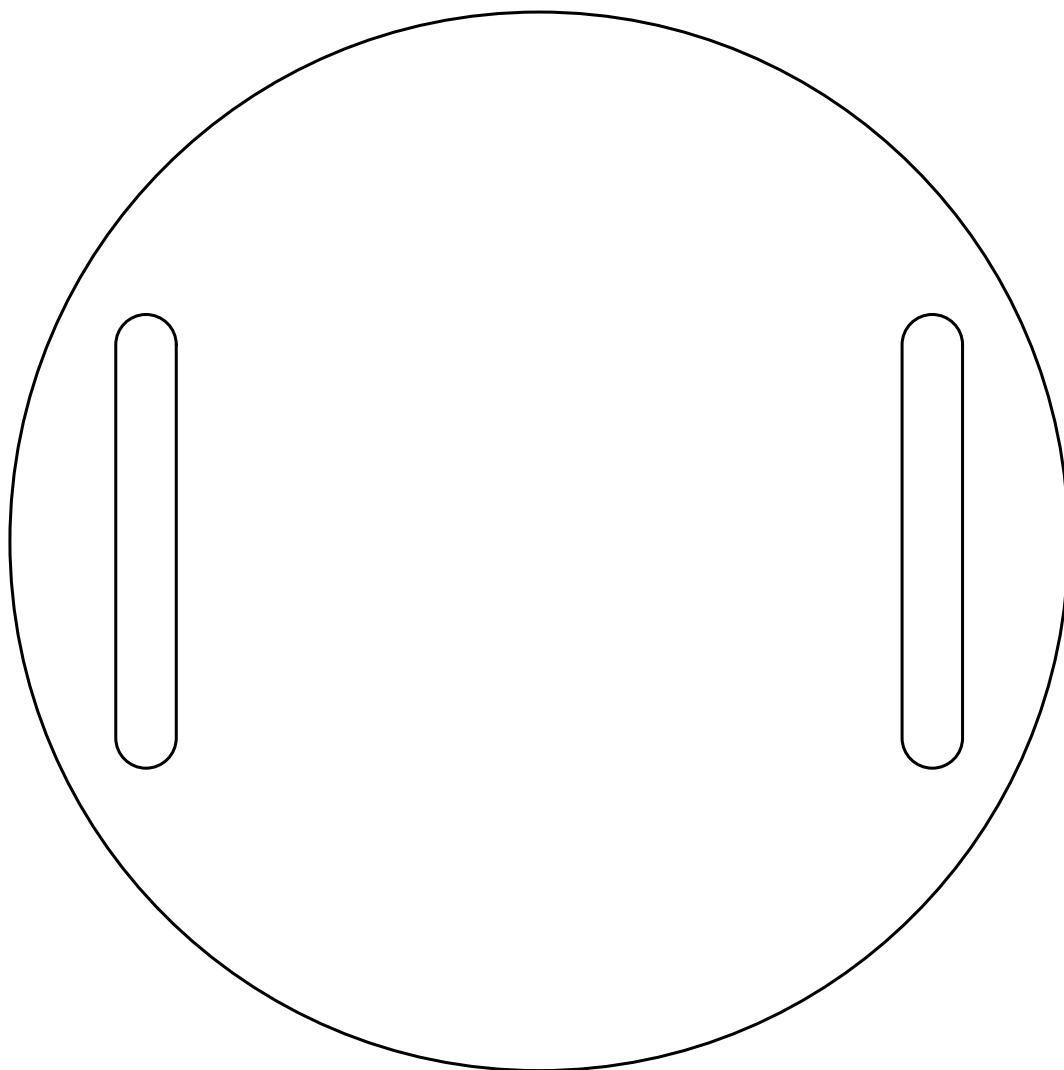












# Component Report EPUCKPROD\_C

epuckprod\_c\_gloss

Wed Apr 30 14:50:05 MET DST 2008

Ref Des	Device Type	Value	Package Type	x	y	ang	Mir	Remark
C1	0603	22P	0603_G	-14.500	10.300	180.000	YES	
C2	0603	22P	0603_G	-14.500	3.500	0.000	YES	
C3	0805	1U	0805_G	-6.300	24.300	90.000	YES	
C4	0603	10N	0603_G	-2.650	24.200	180.000	NO	
C5	0805	4U7	0805_G	-4.600	28.700	270.000	NO	
C6	0805	1U	0805_G	-6.800	-25.600	270.000	NO	
C7	0603	10N	0603_G	-4.750	-22.050	180.000	NO	
C8	0805	2U2	0805_G	-7.100	-18.700	270.000	NO	
C9	0603	100N	0603_G	-18.400	-1.800	270.000	YES	
C10	1206	22U	1206	20.100	3.700	180.000	NO	
C11	1206	22U	1206	20.100	-1.800	0.000	NO	
C12	0805	1U	0805_G	-8.450	-15.550	270.000	NO	
C13	0603	10N	0603_G	-6.550	-11.750	180.000	NO	
C14	0603	100N	0603_G	0.000	-24.000	90.000	NO	
C15	0805	2U2	0805_G	6.400	21.700	0.000	YES	
C16	0805	2U2	0805_G	-8.450	-7.500	0.000	NO	
C17	0603	100N	0603_G	12.400	26.100	180.000	NO	
C18	0805	2U2	0805_G	-4.700	-12.100	180.000	NO	
C19	0603	100N	0603_G	-17.750	-15.550	90.000	NO	
C20	0603	100N	0603_G	29.900	-12.650	180.000	YES	
C21	0603	10P	0603_G	-3.700	-7.850	90.000	YES	
C22	0805	1U	0805	-2.200	-22.550	0.000	NO	
C23	0603	100N	0603_G	1.000	18.150	270.000	NO	
C24	0603	470N	0603_G	-10.300	-12.100	0.000	YES	
C25	0603	100N	0603_G	-2.150	-11.550	180.000	NO	
C26	0603	100N	0603_G	-13.550	-4.610	90.000	NO	
C27	0603	100N	0603_G	-3.900	-17.700	270.000	YES	
C28	0603	100N	0603_G	-18.360	4.390	180.000	NO	
C29	0603	1U	0603_G	7.350	-21.650	180.000	NO	
C30	0603	100N	0603_G	-22.460	1.230	180.000	NO	
C31	0603	100N	0603_G	2.800	-23.100	270.000	NO	
C32	0603	100N	0603_G	9.100	26.100	180.000	NO	
C33	0805	1U	0805_G	-20.700	17.600	180.000	YES	
C34	0603	1U	0603_G	-31.600	6.050	270.000	NO	
C35	0603	10N	0603_G	-15.600	25.100	270.000	YES	
C36	0603	1U	0603_G	29.900	-1.800	180.000	YES	
C37	0603	1U	0603_G	15.400	-29.278	270.000	NO	
C38	0603	4U7	0603_G	-18.900	26.300	270.000	NO	
C39	0603	1U	0603_G	1.600	-16.400	90.000	NO	
C40	0805	2U2	0805_G	3.300	-24.900	270.000	NO	
C41	0805	2U2	0805_G	4.100	-19.800	0.000	NO	
C42	0603	100N	0603_G	-10.200	5.650	0.000	NO	
C43	0603	100N	0603_G	3.550	2.500	0.000	NO	
C44	0603	100N	0603_G	16.300	-24.700	90.000	NO	
C45	0603	100N	0603_G	-11.050	-15.800	0.000	YES	
C46	0603	100N	0603_G	-22.000	-11.700	180.000	YES	
C47	0603	100N	0603_G	-22.000	-15.150	0.000	YES	
C48	0603	100N	0603_G	-18.350	-16.750	90.000	YES	
C49	0603	100N	0603_G	-18.650	-8.400	270.000	YES	
C50	0603	10N	0603_G	2.900	-26.500	270.000	NO	
C51	0603	10N	0603_G	4.000	24.000	90.000	YES	
C52	0603	100N	0603_G	7.500	26.100	0.000	NO	
C55	0603	470N	0603_G	-31.650	-9.300	0.000	YES	
C56	0603	470N	0603_G	29.900	-9.800	0.000	YES	
C57	0603	470N	0603_G	0.000	26.400	90.000	NO	
C58	0805	1U	0805_G	0.300	22.100	0.000	YES	
C60	0603	100N	0603_G	-14.550	26.600	270.000	NO	
C61	0603	100N	0603_G	-5.400	-31.300	90.000	NO	

# Component Report EPUCKPROD\_C

epuckprod\_c\_gloss

Wed Apr 30 14:50:05 MET DST 2008

Ref Des	Device Type	Value	Package Type	x	y	ang	Mir	Remark
C62	0603	100N	0603_G	-21.400	-20.200	0.000	NO	
C63	0603	100N	0603_G	11.000	32.200	90.000	NO	
C64	0603	100N	0603_G	23.500	-16.350	90.000	NO	
C65	0603	100N	0603_G	-33.050	-5.500	180.000	YES	
C66	0603	100N	0603_G	28.850	0.600	0.000	NO	
C67	0603	100N	0603_G	10.000	-30.000	90.000	NO	
D1	LED	KPA-3010SRC-PRVSM	LED_3	0.000	-33.200	90.000	NO	
D2	LED	KPA-3010SRC-PRVSM	LED_3	-28.752	-16.600	30.000	NO	
D3	LED	KPA-3010SRC-PRVSM	LED_3	-33.200	0.000	0.000	NO	
D4	LED	KPA-3010SRC-PRVSM	LED_3	-23.476	23.476	315.000	NO	
D5	LED	KPA-3010SRC-PRVSM	LED_3	5.765	32.696	260.000	NO	
D6	LED	KPA-3010SRC-PRVSM	LED_3	23.476	23.476	225.000	NO	
D7	LED	KPA-3010SRC-PRVSM	LED_3	33.200	0.000	180.000	NO	
D8	LED	KPA-3010SRC-PRVSM	LED_3	28.752	-16.600	150.000	NO	
D9	LED	LD271	LED4_90_1MM	-11.680	-24.253	0.000	YES	
D10	BAS16	BAS16	SOT23	-14.250	16.200	180.000	YES	
D11	TLMO1000	TLMO1000	SMDLED_0603	15.900	27.600	180.000	NO	
D5A	LED	KPA-3010SRC-PRVSM	LED_3	-5.765	32.696	280.000	NO	
DB0	PG1111C	PG1111C	SMDLED_MINI	-30.250	13.700	180.000	NO	
DB1	LED	BR1101W	SMDLED_MINI	-27.750	18.000	180.000	NO	
DBD0	PG1111C	PG1111C	SMDLED_MINI	-15.700	-29.000	0.000	YES	
DBD1	PG1111C	PG1111C	SMDLED_MINI	15.700	-29.000	0.000	YES	
DBD2	PG1111C	PG1111C	SMDLED_MINI	4.300	31.000	0.000	YES	
DBD3	PG1111C	PG1111C	SMDLED_MINI	-4.300	31.000	0.000	YES	
J1	CO6		MM6_SMD	-18.770	12.960	90.000	NO	
J5	CO24		ELCO5602F24_24TO13	0.000	-21.000	0.000	YES	
JB0	CO6		MM6_SMD	8.300	-11.750	180.000	YES	
JE1	JUMP2		SAMBSE40_SMD_08MM	-3.500	3.010	90.000	NO	
JE2	CO40		SAMBSE40_SMD_08MM	11.500	2.110	90.000	NO	
JM1	CO4		MM4_SMD	18.830	-10.688	270.000	YES	
JM2	CO4		MM4_SMD	18.830	7.512	270.000	YES	
JS0	CO2		SIL2	-0.150	-11.950	90.000	NO	
R1	R	10K	0603_G	-12.050	-15.550	90.000	NO	
R2	R	10K	0603_G	-14.750	-15.550	90.000	NO	
R3	R	22	0603_G	9.300	27.800	90.000	YES	
R4	R	0	0603_G	-17.800	15.500	90.000	YES	
R5	R	0	0603_G	-11.200	-26.050	270.000	NO	
R6	R	1K	0603_G	3.100	13.500	0.000	NO	
R7	R	1K	0603_G	3.400	20.700	0.000	NO	
R8	R	0	0603_G	0.000	-22.500	90.000	NO	
R10	R	150	0603_G	14.500	26.100	0.000	NO	
R12	R	1K	0603_G	11.800	25.200	270.000	YES	
R13	R	51K	0603_G	-13.650	-8.050	0.000	YES	
R14	R	51K	0603_G	-16.500	-6.100	270.000	NO	
R15	R	10K	0603_G	-10.300	-8.800	180.000	YES	
R16	R	47K	0603_G	-6.900	-7.850	90.000	YES	
R17	R	680K	0603_G	-0.900	17.150	180.000	NO	
R18	R	390K	0603_G	1.050	16.300	270.000	NO	
R19	R	100K	0603_G	17.200	-9.200	0.000	NO	
R20	R	56	0603_G	-13.700	-22.750	270.000	YES	
R21	R	68	0603_G	-3.500	-32.600	0.000	NO	
R22	R	68	0603_G	-31.100	-12.800	0.000	NO	
R23	R	68	0603_G	-32.800	3.800	270.000	NO	
R24	R	68	0603_G	-10.850	10.100	180.000	NO	
R25	R	100K	0603_G	22.000	-12.600	180.000	NO	
R26	R	100K	0603_G	7.800	8.750	180.000	YES	
R27	R	100K	0603_G	18.200	4.900	180.000	NO	
R28	R	10K	0603_G	-19.400	0.500	0.000	NO	

# Component Report EPUCKPROD\_C

epuckprod\_c\_gloss

Wed Apr 30 14:50:05 MET DST 2008

Ref Des	Device Type	Value	Package Type	x	y	ang	Mir	Remark
R29	R	68	0603_G	5.600	30.250	90.000	NO	
R30	R	68	0603_G	-12.300	7.750	180.000	NO	
R31	R	68	0603_G	30.350	-4.300	90.000	YES	
R32	R	68	0603_G	21.900	-21.600	0.000	NO	
R33	R	10K	0603_G	-13.100	-29.300	180.000	NO	
R34	R	10K	0603_G	-5.500	-9.500	270.000	NO	
R35	R	18	0603_G	-5.400	-32.700	90.000	NO	
R36	R	18	0603_G	-15.700	27.900	90.000	NO	
R37	R	10K	0603_G	-20.900	-4.700	0.000	NO	
R38	R	10K	0603_G	-8.200	-15.400	270.000	YES	
R39	R	10K	0603_G	-8.000	-28.600	270.000	YES	
R40	R	18	0603_G	-22.300	-22.150	90.000	NO	
R41	R	18	0603_G	13.200	28.200	270.000	NO	
R42	R	18	0603_G	25.820	-16.950	180.000	NO	
R43	R	10K	0603_G	-22.650	-4.650	0.000	NO	
R44	R	10K	0603_G	-8.000	-27.100	270.000	YES	
R45	R	10K	0603_G	-8.200	-17.000	270.000	YES	
R46	R	18	0603_G	-30.950	-4.000	270.000	NO	
R47	R	18	0603_G	30.300	0.600	0.000	NO	
R48	R	18	0603_G	12.400	-29.200	270.000	NO	
R49	R	68	0603_G	-4.400	30.800	90.000	NO	
R50	R	10K	0603_G	-21.000	1.250	180.000	NO	
R51	R	10K	0603_G	-11.200	-5.150	0.000	NO	
R52	R	100K	0603_G	19.000	-12.600	180.000	NO	
R53	R	100K	0603_G	20.500	-12.600	180.000	NO	
R54	R	100K	0603_G	22.300	4.900	180.000	NO	
R55	R	100K	0603_G	14.800	9.400	180.000	YES	
R56	R	1K	0603_G	-20.170	4.390	180.000	NO	
R57	R	1K	0603_G	-13.250	5.200	90.000	NO	
R58	R	1K	0603_G	-9.550	-3.700	0.000	NO	
R59	R	100K	0603_G	-22.480	9.120	90.000	NO	
R60	R	100K	0603_G	-13.550	-6.100	90.000	NO	
R61	R	510K	0603_G	-12.450	19.300	0.000	NO	
R62	R	150	0603_G	-23.750	21.150	90.000	YES	
R63	R	100K	0603_G	1.230	-30.900	270.000	NO	
R64	R	100K	0603_G	-13.900	9.950	0.000	NO	
R65	R	100K	0603_G	-18.800	9.100	90.000	NO	
R66	R	100K	0603_G	-22.600	23.050	90.000	YES	
R67	R	100K	0603_G	-21.700	-3.200	0.000	YES	
R68	R	100K	0603_G	-25.700	17.410	0.000	NO	
R69	R	100K	0603_G	-2.270	17.730	180.000	NO	
R70	R	150	0603_G	-25.050	19.100	90.000	YES	
R71	R	0	0603_G	-29.950	-9.300	180.000	YES	
R72	R	0	0603_G	31.700	-9.850	180.000	YES	
R73	R	0	0603_G	3.600	24.050	180.000	NO	
R74	R	1M	0603_G	-15.250	-16.750	270.000	YES	
R75	R	47	0603_G	-15.950	-24.550	90.000	YES	
R76	R	47	0603_G	10.800	-27.750	270.000	YES	
R77	R	10K	0603_G	-17.800	17.400	90.000	YES	
R78	R	10K	0603_G	-25.050	17.150	90.000	YES	
R80	R	43K	0603_G	-11.050	19.700	0.000	NO	
R81	R	330K	0603_G	-11.100	22.200	0.000	NO	
R82	R	10K	0603_G	-20.550	24.500	90.000	YES	
R83	R	2K2	0603_G	9.100	-18.600	0.000	NO	
R84	R	2K2	0603_G	10.800	-18.600	0.000	NO	
R85	R	10K	0603_G	7.350	-18.600	0.000	NO	
R86	R	0	0603_G	10.950	-21.650	0.000	NO	
R87	R	100K	0603_G	3.200	30.050	180.000	NO	

# Component Report EPUCKPROD\_C

epuckprod\_c\_gloss

Wed Apr 30 14:50:05 MET DST 2008

Ref Des	Device Type	Value	Package Type	x	y	ang	Mir	Remark
R88	R	1M	0603_G	6.000	26.100	0.000	NO	
RS	CO4		MM4_SMD	-16.350	-21.150	0.000	NO	
SW1	SWPOU		POUSMD4	-10.000	27.450	0.000	NO	
SW2	SWCOM		APEM_TL4	-17.400	21.600	90.000	YES	
T1	IRLML2402	IRLML2402	SOT23_2	-6.900	-28.650	270.000	NO	
T2	IRLML2402	IRLML2402	SOT23_2	-23.900	-19.250	180.000	NO	
T3	IRLML2402	IRLML2402	SOT23_2	-30.550	-5.400	270.000	YES	
T4	IRLML2402	IRLML2402	SOT23_2	-15.050	24.350	90.000	NO	
T5	IRLML2402	IRLML2402	SOT23_2	11.150	29.850	270.000	NO	
T6	IRLML2402	IRLML2402	SOT23_2	30.600	-6.800	90.000	YES	
T7	IRLML2402	IRLML2402	SOT23_2	23.250	-18.850	270.000	NO	
T8	IRLML2402	IRLML2402	SOT23_2	9.500	-27.250	0.000	NO	
T9	IRLML2402	IRLML2402	SOT23_2	4.400	-31.900	0.000	NO	
T10	IRLML2402	IRLML2402	SOT23_2	-8.900	30.700	180.000	YES	
T11	IRLML2402	IRLML2402	SOT23_2	-22.330	6.090	0.000	NO	
T14	IRLML2402	IRLML2402	SOT23_2	9.200	30.600	0.000	YES	
T15	IRLML2402	IRLML2402	SOT23_2	-19.500	21.600	0.000	YES	
TP1	VIS1		VIS1	-16.000	-26.300	0.000	YES	
TP2	VIS1		VIS1	16.000	-26.300	0.000	YES	
TP3	VIS1		VIS1	-2.500	26.300	0.000	YES	
TP3B	VIS1		VIS1	2.500	26.300	0.000	NO	
U1	TCRT1000	TCRT1000	TCRT1000	-9.956	-31.782	343.000	YES	
U2	TCRT1000	TCRT1000	TCRT1000	-24.910	-22.025	310.000	YES	
U3	TCRT1000	TCRT1000	TCRT1000	-31.650	-0.050	270.000	YES	
U4	TCRT1000	TCRT1000	TCRT1000	-16.618	28.885	210.000	YES	
U5	TCRT1000	TCRT1000	TCRT1000	16.532	28.935	150.000	YES	
U6	TCRT1000	TCRT1000	TCRT1000	31.650	0.050	90.000	YES	
U7	TCRT1000	TCRT1000	TCRT1000	24.971	-21.946	50.000	YES	
U8	TCRT1000	TCRT1000	TCRT1000	9.956	-31.782	17.000	YES	
U9	LP5951MF	LP5951MF-1.5	SOT23_5	1.100	-19.564	270.000	NO	
U10	LP2985IM5	LP2985IM5-2.8	SOT23_5G	-1.037	-26.700	0.000	NO	
U11	LMX9838		BLUETOOTH32_LMX9839	11.450	18.350	270.000	NO	
U12	ADM202EARU		TSSOP16	-16.400	-12.950	180.000	YES	
U13	A3901		TDFN3X3_11	20.100	-7.300	90.000	NO	
U14	SI3000		SO16	-16.250	-10.750	270.000	NO	
U15	MMA7260Q		QFN6X6_16	-14.500	0.000	0.000	NO	
U16	DSPIC30F6014APT		TQFP80	-3.700	3.010	0.000	YES	
U17	LP2985IM5	LP2985IM5-3.3	SOT23_5G	-5.450	25.200	90.000	NO	
U18	LP2985IM5	LP2985IM5-3.3	SOT23_5G	-7.250	-22.100	90.000	NO	
U19	MIC2755BMM		MSO8	-6.600	18.400	0.000	NO	
U20	LP2985IM5	LP2985IM5-3.3	SOT23_5G	-9.100	-12.000	90.000	NO	
U21	TPA301D		SO8	-5.300	-11.500	180.000	YES	
U22	A3901		TDFN3X3_11	20.100	9.000	270.000	NO	
U23	LP2985IM5	LP2985IM5-3.3	SOT23_5G	-18.900	23.564	90.000	NO	
U25	UCC3952PW		TSSOP16	15.320	-21.190	270.000	YES	
U27	LP2985IM5	LP2985IM5-3.3	SOT23_5G	3.363	21.600	180.000	YES	
U29	SPM0208HD5		SISONIC4_SMALL	-31.000	-8.000	180.000	NO	
U30	SPM0208HD5		SISONIC4_SMALL	31.000	-8.000	180.000	NO	
U31	SPM0208HD5		SISONIC4_SMALL	0.300	22.450	180.000	NO	
XT1	VX3W		HXO4	17.000	-19.500	270.000	NO	
XT2	XTAL	7.3728MHZ	HC49US	-18.000	7.000	270.000	YES	

Total Component count 225

# BOM Report EPUCKPROD\_C

epuckprod\_c\_gloss

Wed Apr 30 14:50:06 MET DST 2008

Device	Package	Value	Nb	Reference Designators					Remark
0603-1-100N	0603_G	100N	30	C9 C23 C30 C44 C49 C63	C14 C25 C31 C45 C52 C64	C17 C26 C32 C46 C60 C65	C19 C27 C42 C47 C61 C66	C20 C28 C43 C48 C62 C67	
0603-1-10N	0603_G	10N	6	C4 C51	C7	C13	C35	C50	
0603-1-10P	0603_G	10P	1	C21					
0603-1-1U	0603_G	1U	5	C29	C34	C36	C37	C39	
0603-1-22P	0603_G	22P	2	C1	C2				
0603-1-470N	0603_G	470N	4	C24	C55	C56	C57		
0603-1-4U7	0603_G	4U7	1	C38					
0805-1-1U	0805_G	1U	5	C3	C6	C12	C33	C58	
0805-1-2U2	0805_G	2U2	6	C8 C41	C15	C16	C18	C40	
0805-1-4U7	0805_G	4U7	1	C5					
0805-1U	0805	1U	1	C22					
1206-22U	1206	22U	2	C10	C11				
A3901	TDFN3X3_11		2	U13	U22				
ADM202EARU-A	TSSOP16		1	U12					
BAS16-BAS16	SOT23	BAS16	1	D10					
CO2-SIL2	SIL2		1	JS0					
CO24-ELCO5602F24-1	ELCO5602F24_24TO13		1	J5					
CO4-MM4_SMD	MM4_SMD		3	JM1	JM2	RS			
CO40-SAMBSE40_SMD	SAMBSE40_SMD_08MM		1	JE2					
CO6-MM6_SMD	MM6_SMD		2	J1	JB0				
DSPIC30F6014APT	TQFP80		1	U16					
IRLML2402	SOT23_2	IRLML2402	13	T1 T6 T11	T2 T7 T14	T3 T8 T15	T4 T9	T5 T10	
JUMP2-SAM40SE	SAMBSE40_SMD_08MM		1	JE1					
LED-BR1101H-W	SMDLED_MINI	BR1101W	1	DB1					
LED-KPA-3010SRC-PRV	SMDLED_3	KPA-3010SRC-PRV	1	D1 D6	D2 D7	D3 D8	D4 D5A	D5	
LED-LD271	LED4_90_1MM	LD271	1	D9					
LMX9838-1	BLUETOOTH32_LMX9839		1	U11					
LP2985IM5-2.8	SOT23_5G	LP2985IM5-2.8	1	U10					
LP2985IM5-3.3	SOT23_5G	LP2985IM5-3.35	1	U17	U18	U20	U23	U27	
LP5951MF-1.5-LP5951M	SOT23_5	LP5951MF-1.5	1	U9					
MIC2755BMM	MSO8		1	U19					
MMA7260Q	QFN6X6_16		1	U15					
PG1111C	SMDLED_MINI	PG1111C	5	DB0	DBD0	DBD1	DBD2	DBD3	
R-0603_G-0	0603_G	0	7	R4 R73	R5 R86	R8	R71	R72	
R-0603_G-100K	0603_G	100K	18	R19 R53 R63 R68	R25 R54 R64 R69	R26 R55 R65 R87	R27 R59 R66	R52 R60 R67	
R-0603_G-10K	0603_G	10K	18	R1 R34 R44 R78	R2 R37 R45 R82	R15 R38 R50 R85	R28 R39 R51	R33 R43 R77	
R-0603_G-150	0603_G	150	3	R10	R62	R70			
R-0603_G-18	0603_G	18	8	R35 R46	R36 R47	R40 R48	R41	R42	
R-0603_G-1K	0603_G	1K	6	R6 R58	R7	R12	R56	R57	

# BOM Report EPUCKPROD\_C

epuckprod\_c\_gloss

Wed Apr 30 14:50:06 MET DST 2008

Device	Package	Value	Nb	Reference Designators					Remark
R-0603_G-1M	0603_G	1M	2	R74	R88				
R-0603_G-22	0603_G	22	1	R3					
R-0603_G-2K2	0603_G	2K2	2	R83	R84				
R-0603_G-330K	0603_G	330K	1	R81					
R-0603_G-390K	0603_G	390K	1	R18					
R-0603_G-43K	0603_G	43K	1	R80					
R-0603_G-47	0603_G	47	2	R75	R76				
R-0603_G-47K	0603_G	47K	1	R16					
R-0603_G-510K	0603_G	510K	1	R61					
R-0603_G-51K	0603_G	51K	2	R13	R14				
R-0603_G-56	0603_G	56	1	R20					
R-0603_G-68	0603_G	68	9	R21	R22	R23	R24	R29	
				R30	R31	R32	R49		
R-0603_G-680K	0603_G	680K	1	R17					
SI3000-KS	SO16		1	U14					
SPM0208HD5	SISONIC4_SMALL		3	U29	U30	U31			
SWCOM-TL36WW00050	APEM_TL4		1	SW2					
SWPOU-POUSMD4-BOURNS	POUSMD4		1	SW1					
TCRT1000	TCRT1000	TCRT1000	8	U1	U2	U3	U4	U5	
				U6	U7	U8			
TLMO1000	SMDLED_0603	TLMO1000	1	D11					
TPA301D	SO8		1	U21					
UCC3952PW-2	TSSOP16		1	U25					
VIS1	VIS1		4	TP1	TP2	TP3	TP3B		
VX3W	HXO4		1	XT1					
XTAL-HC49US-7.3728MH	HC49US	7.3728MHZ	1	XT2					

Total Component count 225

# NC Pins Report EPUCKPROD\_C

epuckprod\_c\_gloss

Wed Apr 30 14:50:07 MET DST 2008

Ref Des	Device	Nb	Not Connected Pins											Remark
J1	CO6-MM6_SMD	1	6											
J5	CO24-ELCO5602F24-1	1	15											
SW2	SWCOM-TL36WW00050	1	3											
U11	LMX9838-1	10	2	8	9	14	19	20	21	22	23	27		
U12	ADM202EARU-A	2	7	9										
U14	SI3000-KS	3	2	15	16									
U25	UCC3952PW-2	1	1											

Total count 19



# Power Pins Report EPUCKPROD\_C

epuckprod\_c\_gloss

Wed Apr 30 14:50:08 MET DST 2008

Ref Des	Device	Name	Power Pins										Remark
D1	LED-KPA-3010SRC-PRV	GND	1										
D2	LED-KPA-3010SRC-PRV	GND	1										
D3	LED-KPA-3010SRC-PRV	GND	1										
D4	LED-KPA-3010SRC-PRV	GND	1										
D6	LED-KPA-3010SRC-PRV	GND	1										
D7	LED-KPA-3010SRC-PRV	GND	1										
D8	LED-KPA-3010SRC-PRV	GND	1										
D10	BAS16-BAS16	VCCB	3										
D11	TLMO1000	GND	1										
DB0	PG1111C	GND	1										
J1	CO6-MM6_SMD	GND	3										
J5	CO24-ELCO5602F24-1	GND	1	12	13	24							
		V1_5	3										
		V33	10										
JB0	CO6-MM6_SMD	GND	6										
		VCCB	5										
JE1	JUMP2-SAM40SE	GND	40										
		V33	39										
JE2	CO40-SAMBSE40_SMD	GND	9	10	15	16	39	40					
		V33	17	18									
		VCCA	35	36									
		VCCB	5	6									
RS	CO4-MM4_SMD	GND	3										
SW1	SWPOU-POUSMD4-BOURNS	GND	1										
SW2	SWCOM-TL36WW00050	VCCB	1										
T1	IRLML2402	GND	2										
T2	IRLML2402	GND	2										
T3	IRLML2402	GND	2										
T4	IRLML2402	GND	2										
T5	IRLML2402	GND	2										
T6	IRLML2402	GND	2										
T7	IRLML2402	GND	2										
T8	IRLML2402	GND	2										
T9	IRLML2402	GND	2										
T10	IRLML2402	GND	2										
T11	IRLML2402	GND	2										
T14	IRLML2402	GND	2										
U1	TCRT1000	GND	3										
U2	TCRT1000	GND	3										
U3	TCRT1000	GND	3										
U4	TCRT1000	GND	3										
U5	TCRT1000	GND	3										
U6	TCRT1000	GND	3										
U7	TCRT1000	GND	3										
U8	TCRT1000	GND	3										
U9	LP5951MF-1.5-LP5951M	GND	2										
		V1_5	5										
		VCCB	1										
U10	LP2985IM5-2.8	GND	2										
		VCCB	1										
U11	LMX9838-1	GND	3	4	15	17	18	24	28	29	30	31	
			32										
		V33	11										
U12	ADM202EARU-A	VCCE	6	10									
		GND	8	10	15								
U13	A3901	V33	16										
		GND	3	11									

# Power Pins Report EPUCKPROD\_C

epuckprod\_c\_gloss

Wed Apr 30 14:50:08 MET DST 2008

Ref Des	Device	Name	Power Pins					Remark
		VCCB	8					
U14	SI3000-KS	GND	14					
		VCCA	13					
		VCCC	12					
U15	MMA7260Q	GND	4					
		VCCA	3					
U16	DSPIC30F6014APT	GND	11	26	31	51	70	
		VCCA	25					
U17	LP2985IM5-3.3	GND	2					
		V33	5					
		VCCB	1					
U18	LP2985IM5-3.3	GND	2					
		VCCA	5					
		VCCB	1					
U19	MIC2755BMM	GND	4					
		VCCB	8					
U20	LP2985IM5-3.3	GND	2					
		VCCB	1					
		VCCC	5					
U21	TPA301D	GND	7					
		VCCC	6					
U22	A3901	GND	3	11				
		VCCB	8					
U23	LP2985IM5-3.3	GND	2					
		VCCB	1					
		VCCF	5					
U25	UCC3952PW-2	GND	9	10	11	12	13	
U27	LP2985IM5-3.3	GND	2					
		VCCB	1					
		VCCE	5					
U29	SPM0208HD5	GND	3					
		VCCA	4					
U30	SPM0208HD5	GND	3					
		VCCA	4					
U31	SPM0208HD5	GND	3					
		VCCA	4					
XT1	VX3W	GND	2					
		V33	1	4				

Total count 59

# Single Node Nets Report EPUCKPROD\_C

epuckprod\_c\_gloss

Wed Apr 30 14:50:08 MET DST 2008

Netname

Node

Device

Remark

Total Nets count 0