

COAX2LOGIC

LSA1 S.Bouabdallah

Phone: 35911

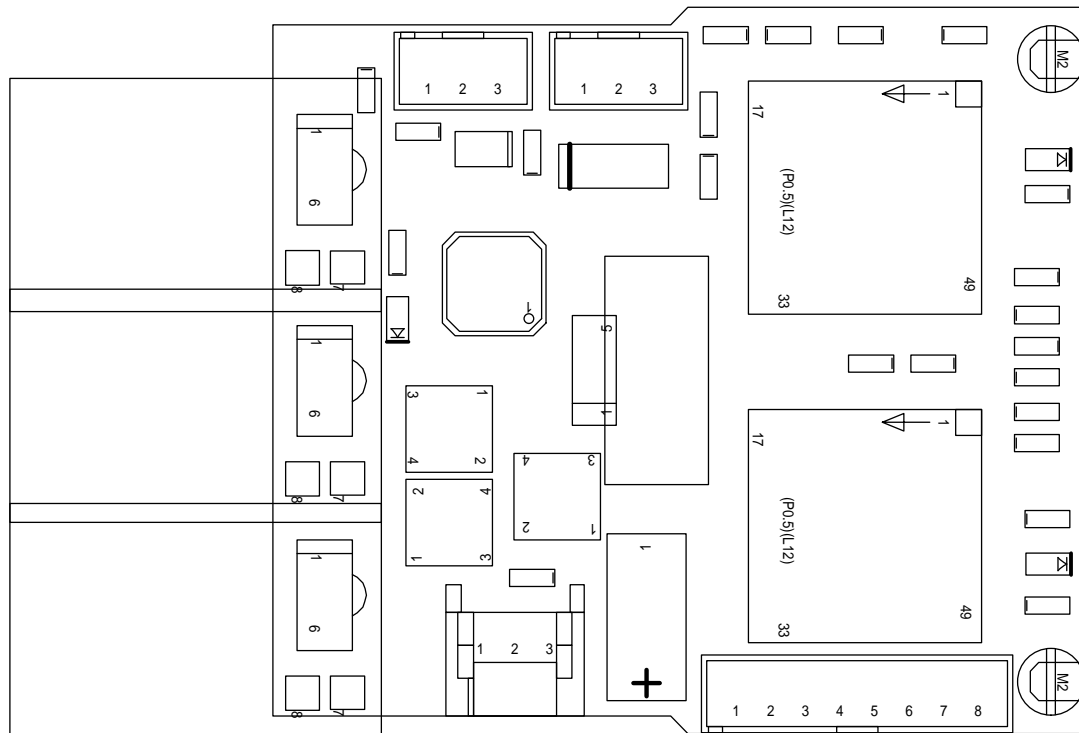
Thu May 26 10:33:10 MET DST 2005

MFG_DATE: 30.05.2005

QUANTITY: 3

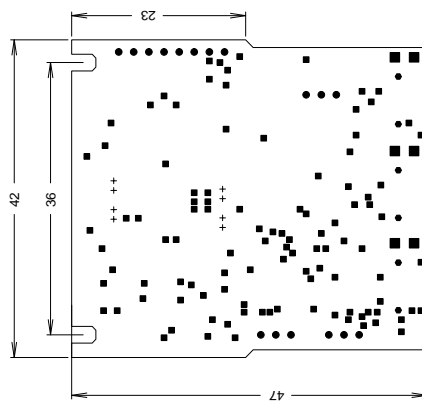
SOLDERMASK: mtop mbot

MATERIAL: FR4 : 0.5 mm



CONTENTS	PAGE
Drill	3
Etch	4
OutDetail_Bottom	5
OutDetail_Top	6
Outline_Top	7
Gerber_mtop	8
Gerber_top	9
Gerber_bot	10
Gerber_mbot	11
Gerber_cont	12
Component Report	13 - 14
BOM Report	15
NC-Pins Report	16
Power-Pins Report	17

CONTENTS	PAGE
Single Node Nets	18 - 19

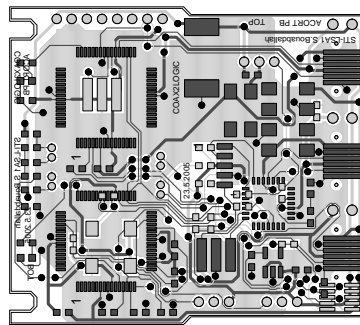


DRILL CHART			
FIGURE	SIZE	PLATED	QTY
■	0.406	PLATED	105
+	0.635	PLATED	8
●	0.767	PLATED	17
■	0.889	PLATED	6
●	0.85	NOT PLATED	6

TITRE:

LABORATOIRE:
ENGINEER:

DATE:
EPFL-ACORT-



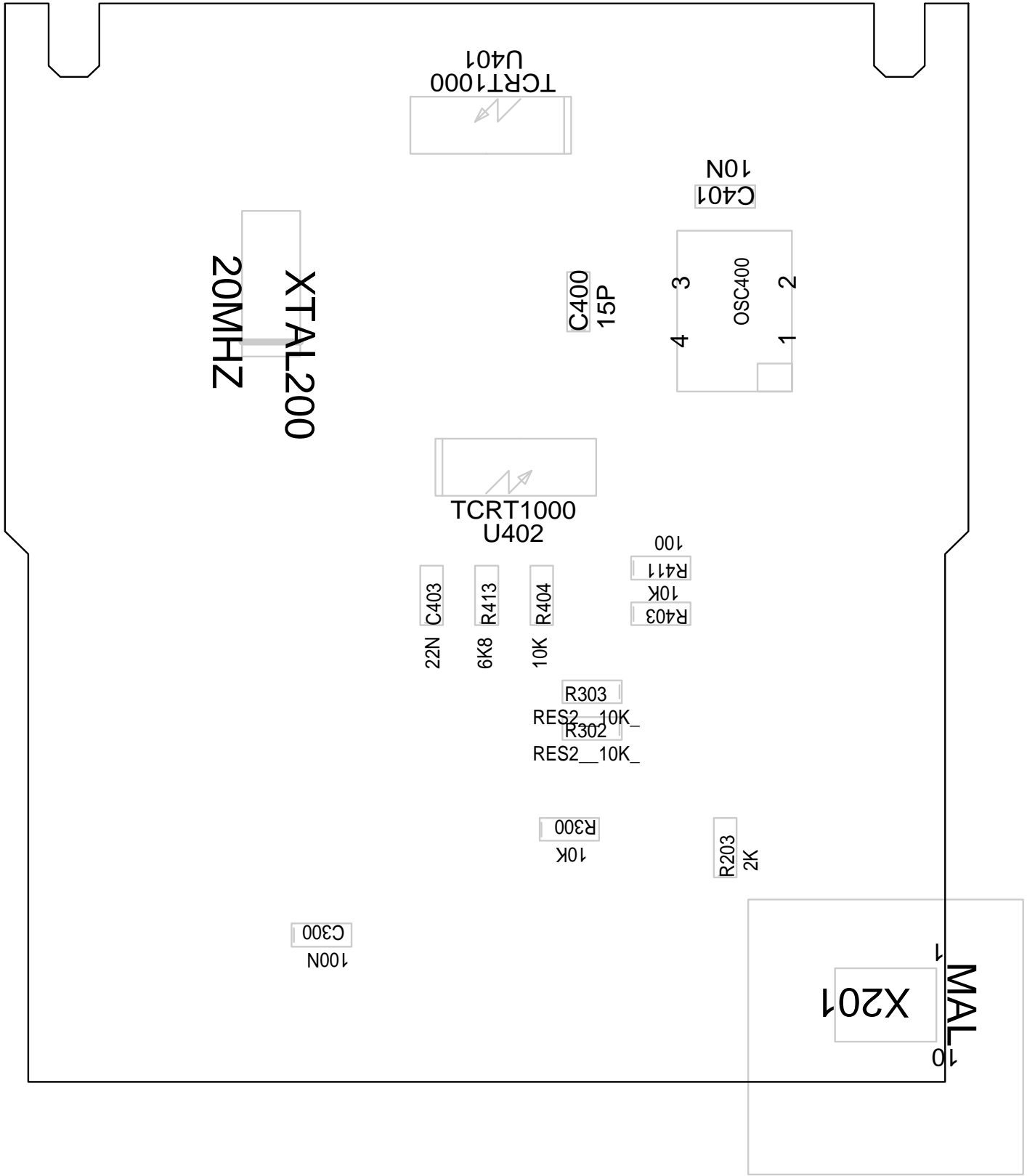
TITRE:

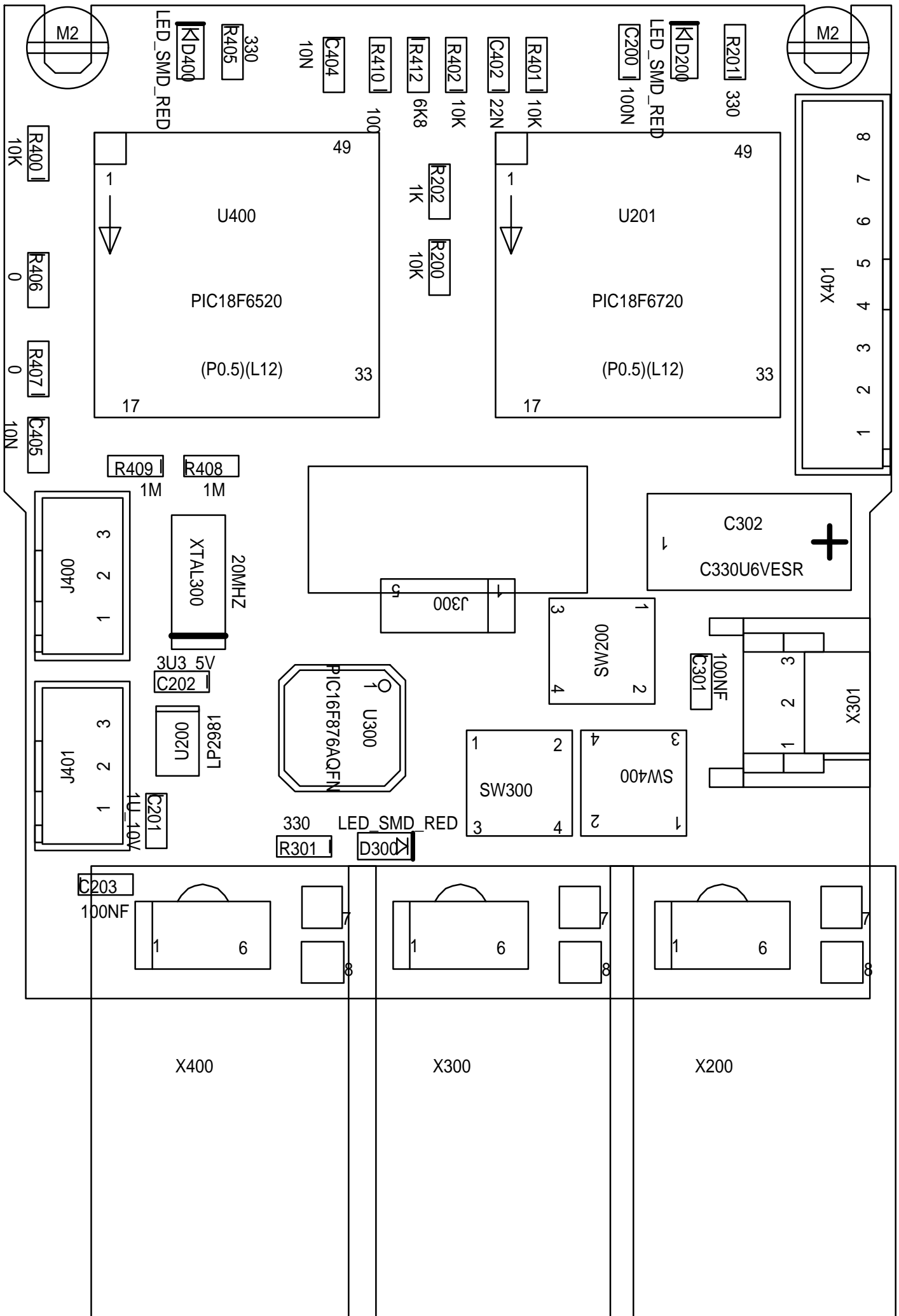
LABORATOIRE:

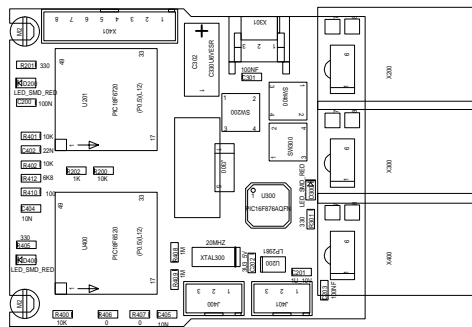
DATE:

ENGINEER:

EPFL-ACORT-



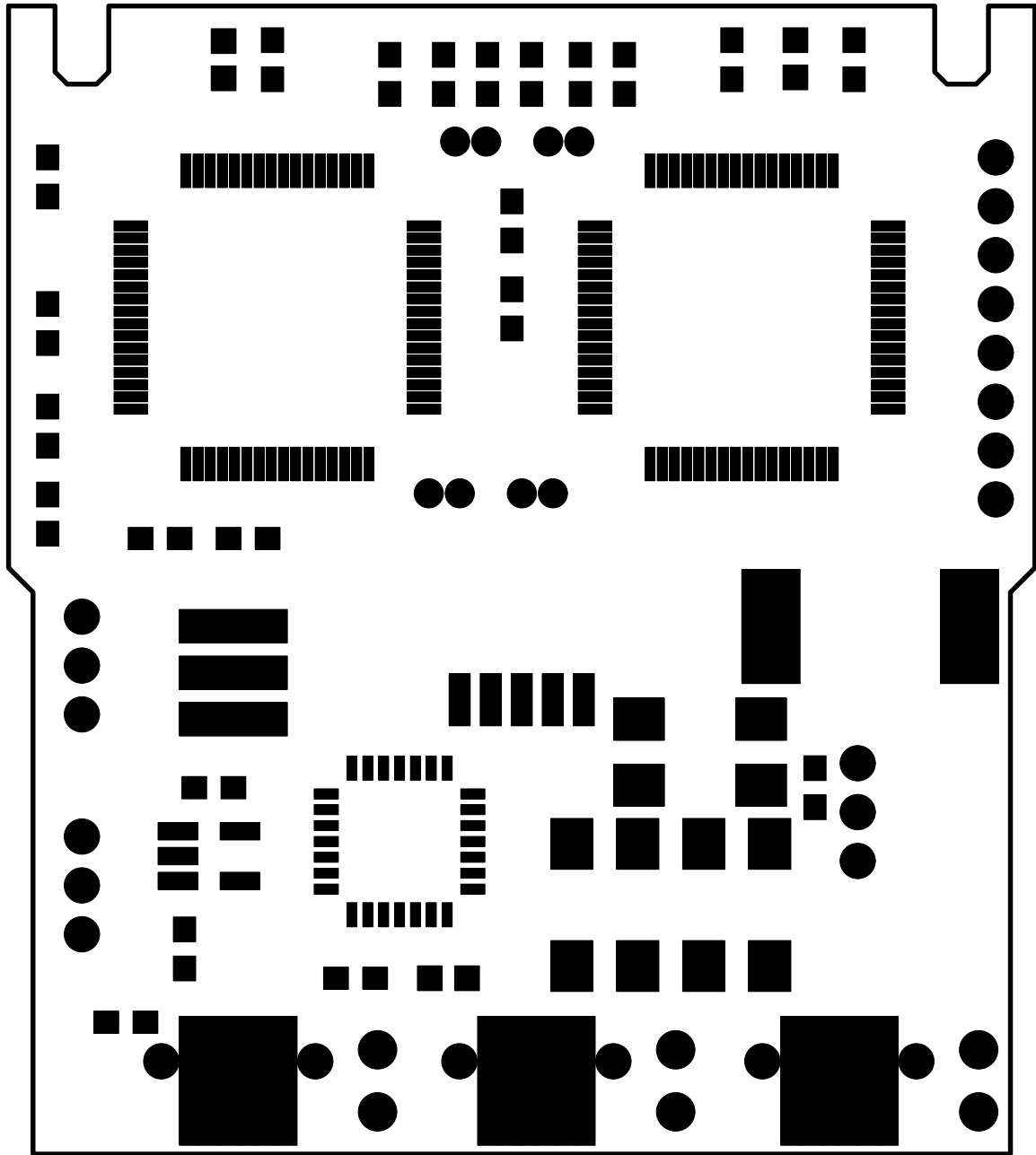


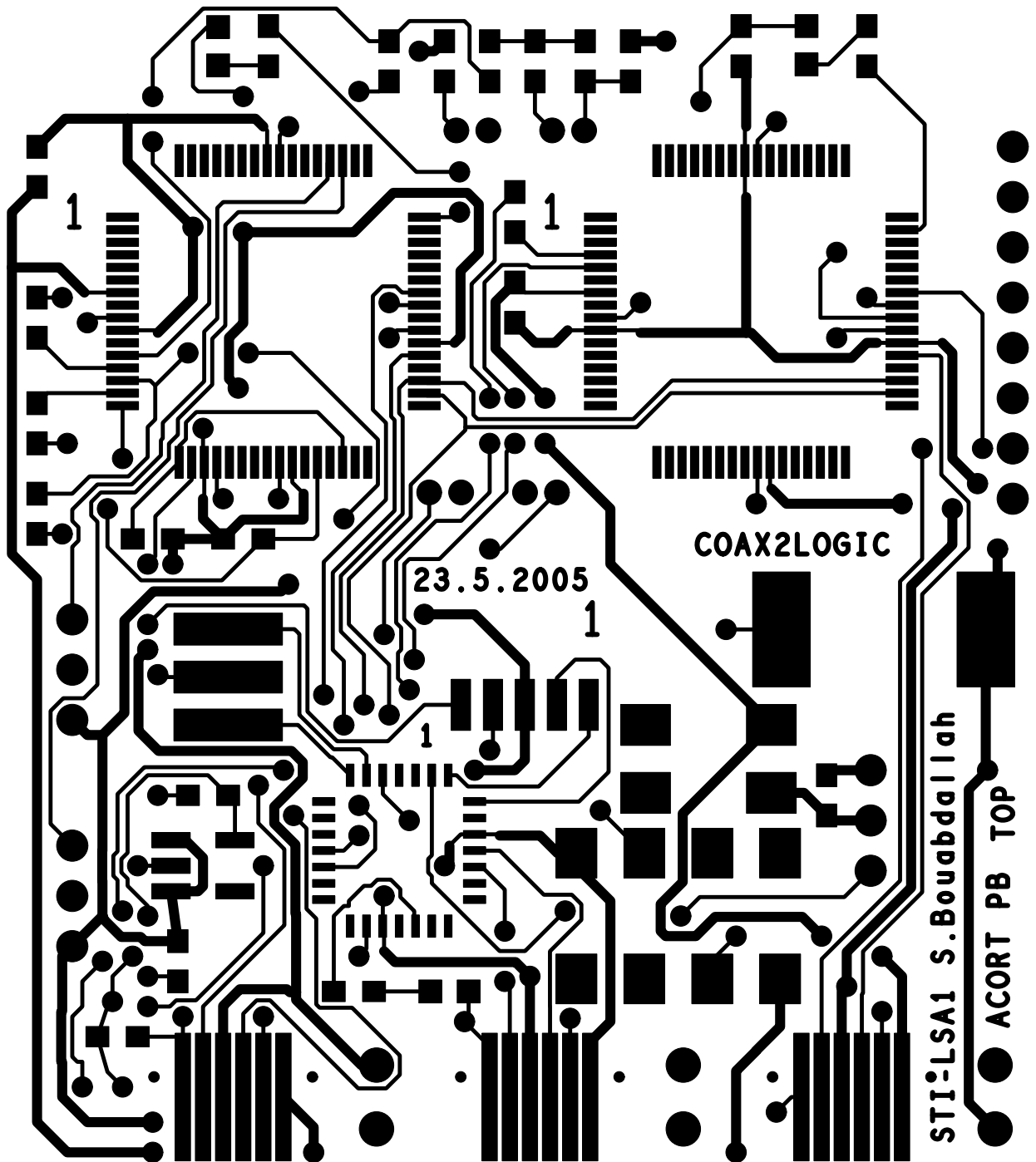


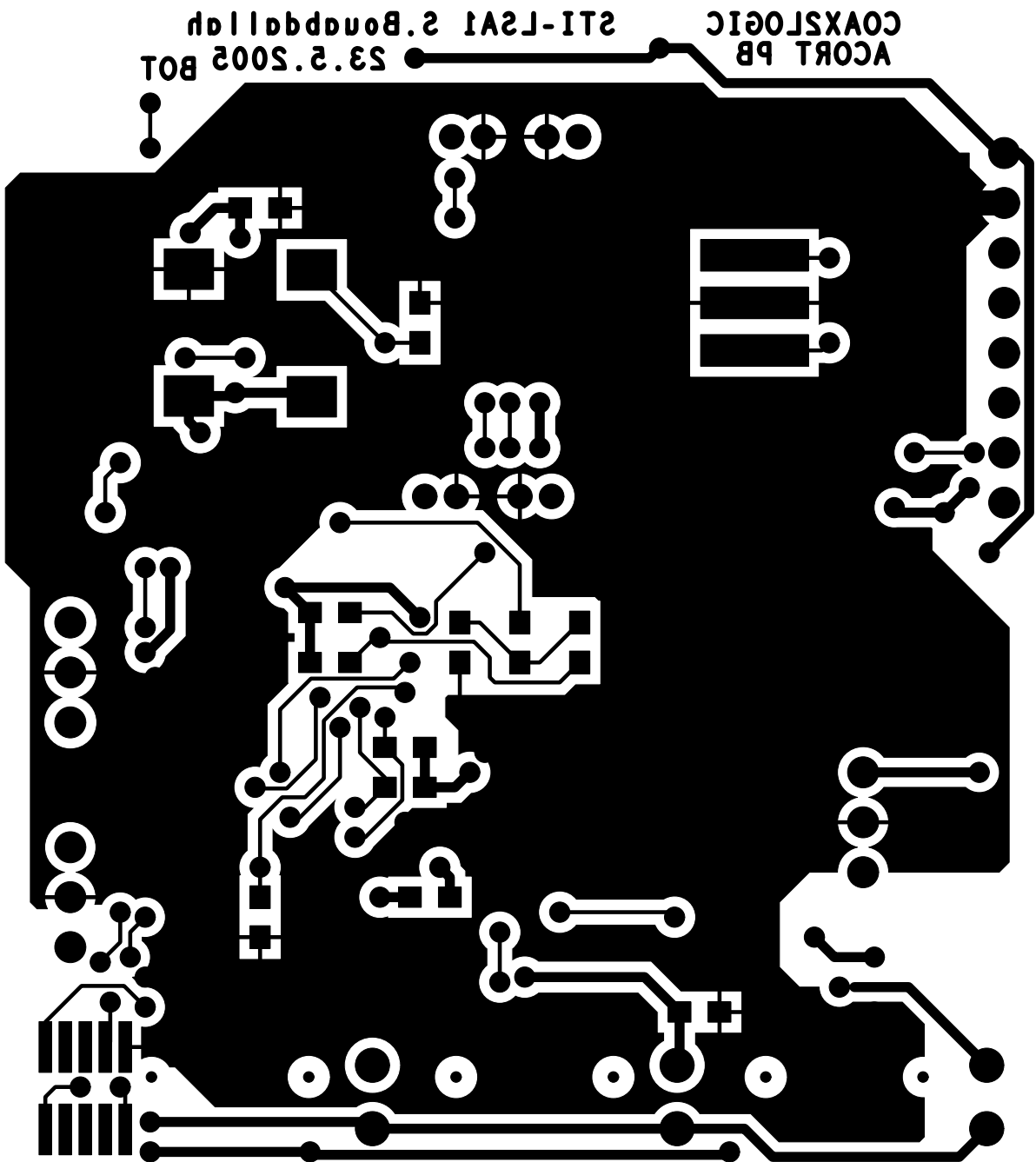
TITRE:

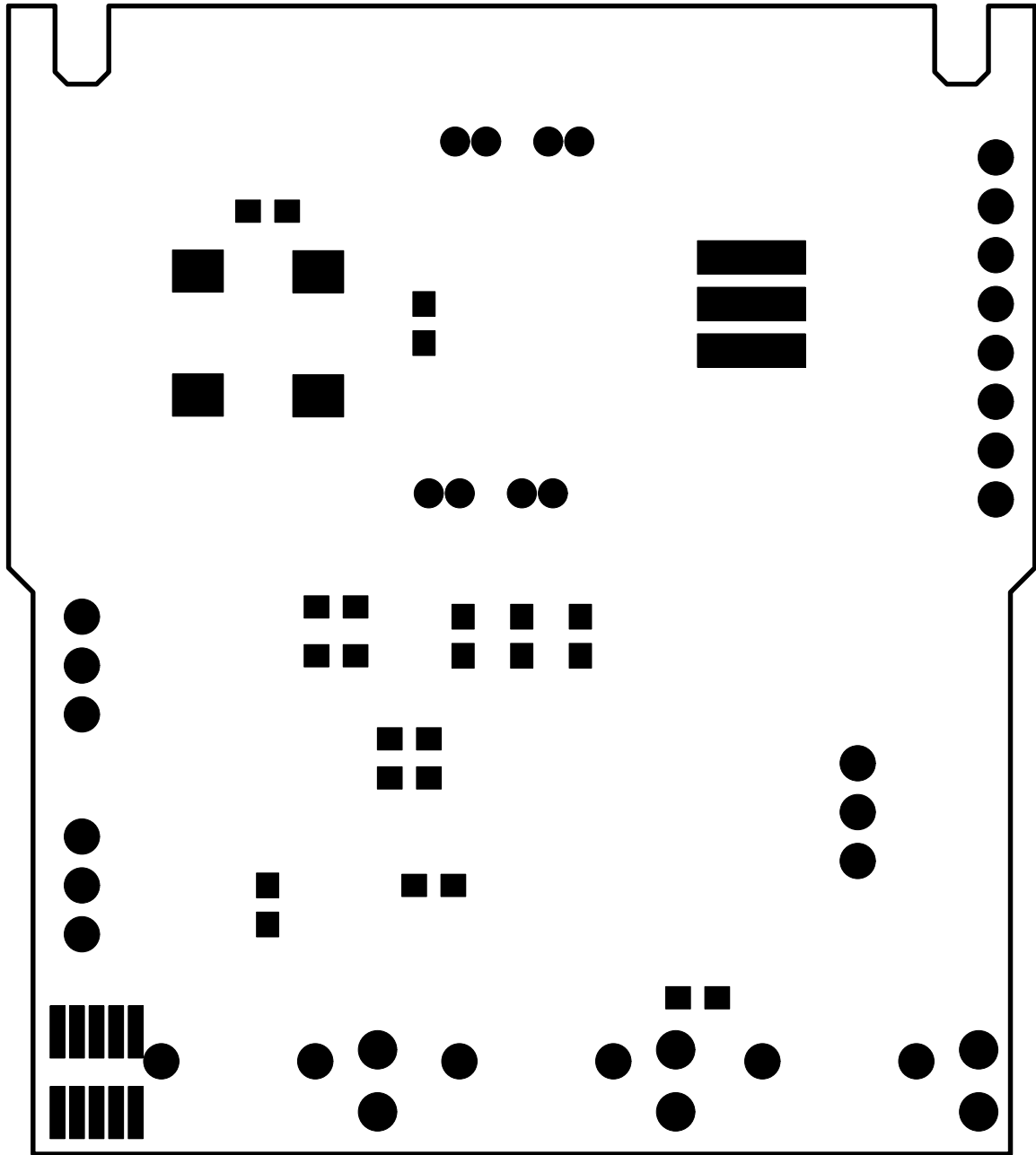
LABORATOIRE:
ENGINEER:

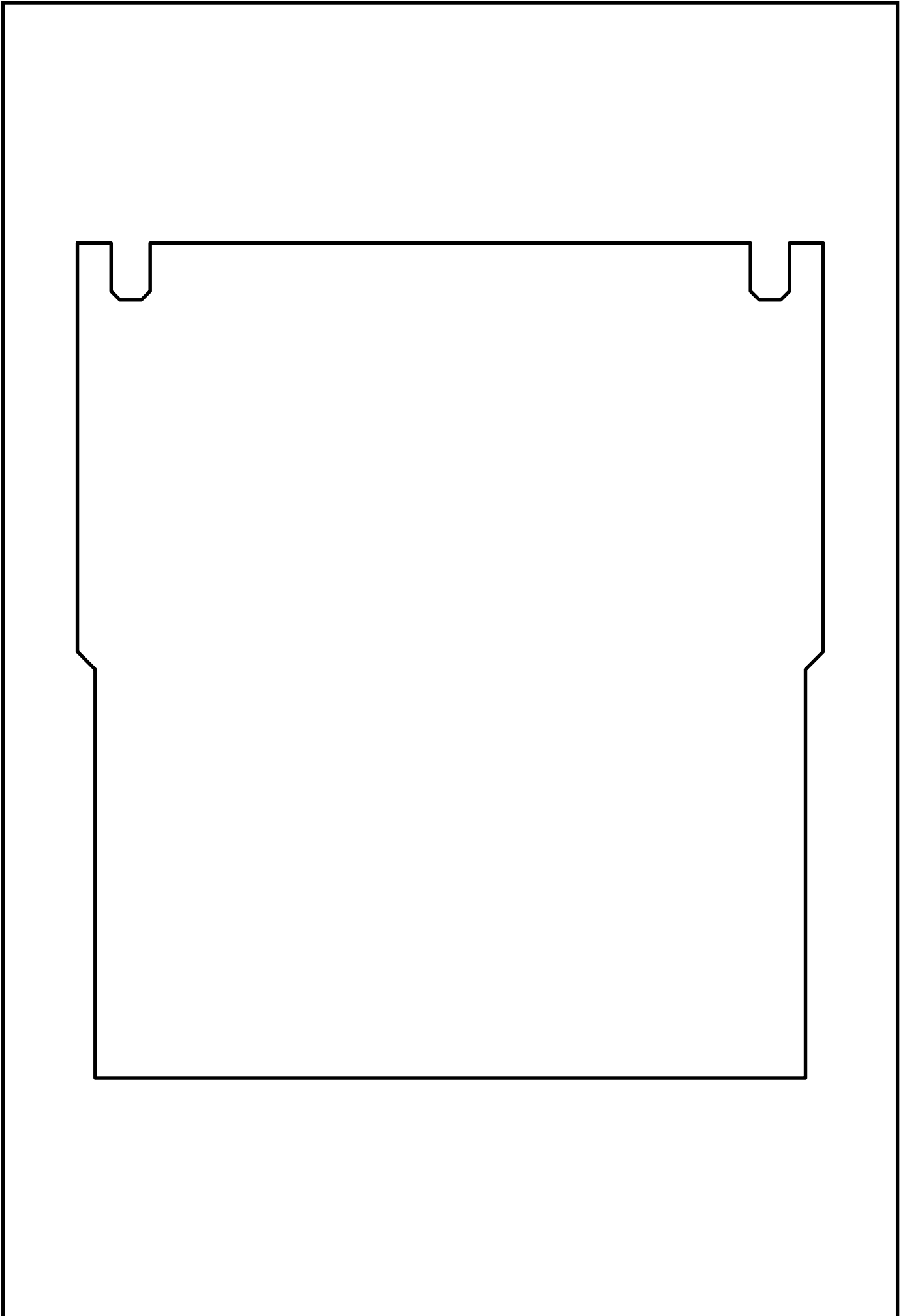
DATE:
EPFL-ACORT-











Component Report COAX2LOGIC

coax2logic_gloss

Thu May 26 10:33:11 MET DST 2005

Ref Des	Device Type	Value	Package Type	x	y	ang	Mir	Remark
C200	100N	100N	0603	8.600	20.800	180.000	NO	
C201	1U_10V	1U_10V	0603	-13.800	-15.600	0.000	NO	
C202	3U3_5V	3U3_5V	0603	-12.600	-9.000	270.000	NO	
C203	100NF	100NF	0603	-16.200	-18.600	90.000	NO	
C300	100N	100N	0603	7.200	-17.600	270.000	YES	
C301	100NF	100NF	0603	12.000	-9.000	0.000	NO	
C302	C330U6VESR	C330U6VESR	CP_3216	14.264	-2.400	90.000	NO	
C400	15P	15P	0603	-4.000	10.000	180.000	YES	
C401	10N	10N	0603	-10.400	14.600	90.000	YES	
C402	22N	22N	0603	2.400	20.200	180.000	NO	
C403	22N	22N	0603	2.400	-2.800	180.000	YES	
C404	10N	10N	0603	-5.400	20.200	0.000	NO	
C405	10N	10N	0603	-19.400	2.200	0.000	NO	
D200	LEDSMDRED	LED_SMD_RED	SMDLED_MINI	11.200	20.838	0.000	NO	
D300	LEDSMDRED	LED_SMD_RED	SMDLED_MINI	-3.000	-16.800	270.000	NO	
D400	LEDSMDRED	LED_SMD_RED	SMDLED_MINI	-12.200	20.800	0.000	NO	
J300	CON5	CON5	EDGE5_50	2.540	-5.400	180.000	NO	
J400	JST3_2MM	JST3_2MM	JST3_TH	-17.300	-4.000	90.000	NO	
J401	JST3_2MM	JST3_2MM	JST3_TH	-17.300	-13.000	90.000	NO	
OSC400	VX3_40MHZ	VX3_40MHZ	VX3	-10.800	9.600	270.000	YES	
R200	10K	10K	0603	-0.400	10.600	0.000	NO	
R201	330	330	0603	13.600	20.800	180.000	NO	
R202	1K	1K	0603	-0.400	14.200	0.000	NO	
R203	2K	2K	0603	-10.400	-13.800	180.000	YES	
R300	10K	10K	0603	-3.600	-13.000	270.000	YES	
R301	330	330	0603	-6.800	-16.800	270.000	NO	
R302	RES2_10K_	RES2_10K_	0603	-4.600	-8.600	90.000	YES	
R303	RES2_10K_	RES2_10K_	0603	-4.600	-7.000	90.000	YES	
R400	10K	10K	0603	-19.400	16.000	180.000	NO	
R401	10K	10K	0603	4.200	20.200	180.000	NO	
R402	10K	10K	0603	0.400	20.200	180.000	NO	
R403	10K	10K	0603	-7.600	-3.600	270.000	YES	
R404	10K	10K	0603	-2.400	-2.800	180.000	YES	
R405	330	330	0603	-10.200	20.800	0.000	NO	
R406	0	0	0603	-19.400	10.000	0.000	NO	
R407	0	0	0603	-19.400	5.800	180.000	NO	
R408	1M	1M	0603	-11.200	1.200	90.000	NO	
R409	1M	1M	0603	-14.800	1.200	270.000	NO	
R410	100	100	0603	-3.200	20.200	180.000	NO	
R411	100	100	0603	-7.600	-1.600	270.000	YES	
R412	6K8	6K8	0603	-1.400	20.200	0.000	NO	
R413	6K8	6K8	0603	0.000	-2.800	180.000	YES	
SW200	SW	SW_PB	POUSMD4	7.300	-7.550	270.000	NO	
SW300	SW	SW_PB	POUSMD4	3.400	-13.800	0.000	NO	
SW400	SW	SW_PB	POUSMD4	8.800	-13.800	180.000	NO	
U200	LP2981	LP2981	SOT23_5	-12.800	-11.800	0.000	NO	
U201	PIC18F6720	PIC18F6720	STQFP64	9.000	10.250	0.000	NO	
U300	PIC16F876AQFN	PIC16F876AQFN	28QFN28_065MM	-5.000	-11.200	270.000	NO	
U400	PIC18F6520	PIC18F6520	STQFP64	-10.000	10.250	0.000	NO	
U401	TCRT1000	TCRT1000	TCRT1000	-0.185	17.450	180.000	YES	
U402	TCRT1000	TCRT1000	TCRT1000	-1.265	3.050	0.000	YES	
X200	PROGPIC	PROGPIC	PROGPIC	13.000	-21.000	0.000	NO	
X201	SAM10F	SAM10F	BLUETOOTH_OS4	-17.400	-20.650	180.000	YES	
X300	PROGPIC	PROGPIC	PROGPIC	0.600	-21.000	0.000	NO	
X301	JST3_2MM	JST3_2MM	JST3_THS	20.000	-10.000	90.000	NO	
X400	PROGPIC	PROGPIC	PROGPIC	-11.600	-21.000	0.000	NO	
X401	JST8_2MM	JST8_2MM	JST8_TH	18.700	9.800	90.000	NO	
XTAL200	20MHZ	20MHZ	OSC_CERAMIC	9.400	10.800	180.000	YES	

Component Report COAX2LOGIC

coax2logic_gloss

Thu May 26 10:33:11 MET DST 2005

Ref Des	Device Type	Value	Package Type	x	y	ang	Mir	Remark
XTAL300	20MHZ	20MHZ	OSC_CERAMIC	-11.800	-4.295	180.000	NO	

Total Component count 59

BOM Report COAX2LOGIC

coax2logic_gloss

Thu May 26 10:33:11 MET DST 2005

Device	Package	Value	Nb	Reference Designators			Remark
0	0603	0	2	R406	R407		
100	0603	100	2	R410	R411		
100N	0603	100N	2	C200	C300		
100NF	0603	100NF	2	C203	C301		
10K	0603	10K	7	R200 R403	R300 R404	R400 R401 R402	
10N	0603	10N	3	C401	C404	C405	
15P	0603	15P	1	C400			
1K	0603	1K	1	R202			
1M	0603	1M	2	R408	R409		
1U_10V	0603	1U_10V	1	C201			
20MHZ	OSC_CERAMIC	20MHZ	2	XTAL200	XTAL300		
22N	0603	22N	2	C402	C403		
2K	0603	2K	1	R203			
330	0603	330	3	R201	R301	R405	
3U3_5V	0603	3U3_5V	1	C202			
6K8	0603	6K8	2	R412	R413		
C330U6VESR	CP_3216	C330U6VESR	1	C302			
CON5	EDGE5_50	CON5	1	J300			
JST3_2MM	JST3_TH	JST3_2MM	2	J400	J401		
JST3_2MM-1	JST3_THS	JST3_2MM	1	X301			
JST8_2MM	JST8_TH	JST8_2MM	1	X401			
LEDSMDRED	SMDLED_MINI	LED_SMD_RED	3	D200	D300	D400	
LP2981	SOT23_5	LP2981	1	U200			
PIC16F876AQFN	QFN28_065MM	PIC16F876AQFN	28	U300			
PIC18F6520	STQFP64	PIC18F6520	1	U400			
PIC18F6720	STQFP64	PIC18F6720	1	U201			
PROGPIC	PROGPIC	PROGPIC	3	X200	X300	X400	
RES2_10K_	0603	RES2_10K_	2	R302	R303		
SAM10F	BLUETOOTH_OS4	SAM10F	1	X201			
SW-PB	POUSMD4	SW_PB	3	SW200	SW300	SW400	
TCRT1000	TCRT1000	TCRT1000	2	U401	U402		
VX3_40MHZ	VX3	VX3_40MHZ	1	OSC400			

Total Component count 59

NC Pins Report COAX2LOGIC

coax2logic_gloss

Thu May 26 10:33:12 MET DST 2005

Ref Des	Device	Nb	Not Connected Pins			Remark
SW200	SW-PB	2	3	4		
SW300	SW-PB	2	3	4		
SW400	SW-PB	2	3	4		

Total count 6

Power Pins Report COAX2LOGIC

coax2logic_gloss

Thu May 26 10:33:12 MET DST 2005

Ref Des	Device	Name	Power Pins				Remark
U200	LP2981	GND	2				
U201	PIC18F6720	GND	9	25	41	56	
U300	PIC16F876AQFN	GND	5	16			
U400	PIC18F6520	GND	9	20	25	41	56
U401	TCRT1000	GND	2	3			
U402	TCRT1000	GND	2	3			

Total count 6

Single Node Nets Report COAX2LOGIC

coax2logic_gloss

Thu May 26 10:33:13 MET DST 2005

Netname	Node	Device	Remark
CHS_1/4	U400.62	PIC18F6520	
CHS_2/4	U400.61	PIC18F6520	
CML_1/4	U400.47	PIC18F6520	
CML_2/4	U400.46	PIC18F6520	
NETU200/4	U200.4	LP2981	
NETU201/1	U201.1	PIC18F6720	
NETU201/11	U201.11	PIC18F6720	
NETU201/12	U201.12	PIC18F6720	
NETU201/13	U201.13	PIC18F6720	
NETU201/14	U201.14	PIC18F6720	
NETU201/15	U201.15	PIC18F6720	
NETU201/16	U201.16	PIC18F6720	
NETU201/17	U201.17	PIC18F6720	
NETU201/18	U201.18	PIC18F6720	
NETU201/19	U201.19	PIC18F6720	
NETU201/2	U201.2	PIC18F6720	
NETU201/20	U201.20	PIC18F6720	
NETU201/21	U201.21	PIC18F6720	
NETU201/22	U201.22	PIC18F6720	
NETU201/23	U201.23	PIC18F6720	
NETU201/24	U201.24	PIC18F6720	
NETU201/27	U201.27	PIC18F6720	
NETU201/28	U201.28	PIC18F6720	
NETU201/29	U201.29	PIC18F6720	
NETU201/3	U201.3	PIC18F6720	
NETU201/30	U201.30	PIC18F6720	
NETU201/31	U201.31	PIC18F6720	
NETU201/32	U201.32	PIC18F6720	
NETU201/33	U201.33	PIC18F6720	
NETU201/36	U201.36	PIC18F6720	
NETU201/43	U201.43	PIC18F6720	
NETU201/44	U201.44	PIC18F6720	
NETU201/45	U201.45	PIC18F6720	
NETU201/46	U201.46	PIC18F6720	
NETU201/48	U201.48	PIC18F6720	
NETU201/49	U201.49	PIC18F6720	
NETU201/50	U201.50	PIC18F6720	
NETU201/51	U201.51	PIC18F6720	
NETU201/52	U201.52	PIC18F6720	
NETU201/53	U201.53	PIC18F6720	
NETU201/54	U201.54	PIC18F6720	
NETU201/55	U201.55	PIC18F6720	
NETU201/58	U201.58	PIC18F6720	
NETU201/59	U201.59	PIC18F6720	
NETU201/6	U201.6	PIC18F6720	
NETU201/60	U201.60	PIC18F6720	
NETU201/61	U201.61	PIC18F6720	
NETU201/62	U201.62	PIC18F6720	
NETU201/63	U201.63	PIC18F6720	
NETU201/64	U201.64	PIC18F6720	
NETU201/8	U201.8	PIC18F6720	
NETU300/10	U300.10	PIC16F876AQFN	
NETU300/13	U300.13	PIC16F876AQFN	
NETU300/14	U300.14	PIC16F876AQFN	
NETU300/15	U300.15	PIC16F876AQFN	
NETU300/18	U300.18	PIC16F876AQFN	
NETU300/20	U300.20	PIC16F876AQFN	
NETU300/21	U300.21	PIC16F876AQFN	

Single Node Nets Report COAX2LOGIC

coax2logic_gloss

Thu May 26 10:33:13 MET DST 2005

Netname	Node	Device	Remark
NETU300/22	U300.22	PIC16F876AQFN	
NETU300/23	U300.23	PIC16F876AQFN	
NETU300/27	U300.27	PIC16F876AQFN	
NETU300/3	U300.3	PIC16F876AQFN	
NETU300/4	U300.4	PIC16F876AQFN	
NETU300/8	U300.8	PIC16F876AQFN	
NETU300/9	U300.9	PIC16F876AQFN	
NETU400/1	U400.1	PIC18F6520	
NETU400/11	U400.11	PIC18F6520	
NETU400/2	U400.2	PIC18F6520	
NETU400/21	U400.21	PIC18F6520	
NETU400/22	U400.22	PIC18F6520	
NETU400/23	U400.23	PIC18F6520	
NETU400/24	U400.24	PIC18F6520	
NETU400/27	U400.27	PIC18F6520	
NETU400/29	U400.29	PIC18F6520	
NETU400/3	U400.3	PIC18F6520	
NETU400/31	U400.31	PIC18F6520	
NETU400/32	U400.32	PIC18F6520	
NETU400/33	U400.33	PIC18F6520	
NETU400/36	U400.36	PIC18F6520	
NETU400/4	U400.4	PIC18F6520	
NETU400/40	U400.40	PIC18F6520	
NETU400/43	U400.43	PIC18F6520	
NETU400/44	U400.44	PIC18F6520	
NETU400/45	U400.45	PIC18F6520	
NETU400/5	U400.5	PIC18F6520	
NETU400/53	U400.53	PIC18F6520	
NETU400/54	U400.54	PIC18F6520	
NETU400/55	U400.55	PIC18F6520	
NETU400/58	U400.58	PIC18F6520	
NETU400/59	U400.59	PIC18F6520	
NETU400/6	U400.6	PIC18F6520	
NETU400/60	U400.60	PIC18F6520	
NETU400/63	U400.63	PIC18F6520	
NETU400/64	U400.64	PIC18F6520	
NETU400/8	U400.8	PIC18F6520	
NETX201/2	X201.2	SAM10F	
NETX201/3	X201.3	SAM10F	
NETX201/7	X201.7	SAM10F	
NETX201/8	X201.8	SAM10F	
NETX201/9	X201.9	SAM10F	
NETX401/1	X401.1	JST8_2MM	
NETX401/2	X401.2	JST8_2MM	
NETX401/3	X401.3	JST8_2MM	
NETX401/4	X401.4	JST8_2MM	
NETX401/5	X401.5	JST8_2MM	
NETX401/6	X401.6	JST8_2MM	
PWM_1/4	U400.50	PIC18F6520	
PWM_2/4	U400.49	PIC18F6520	

Total Nets count 108