

# ADCS

CTS-GE N.Steiner

Phone:

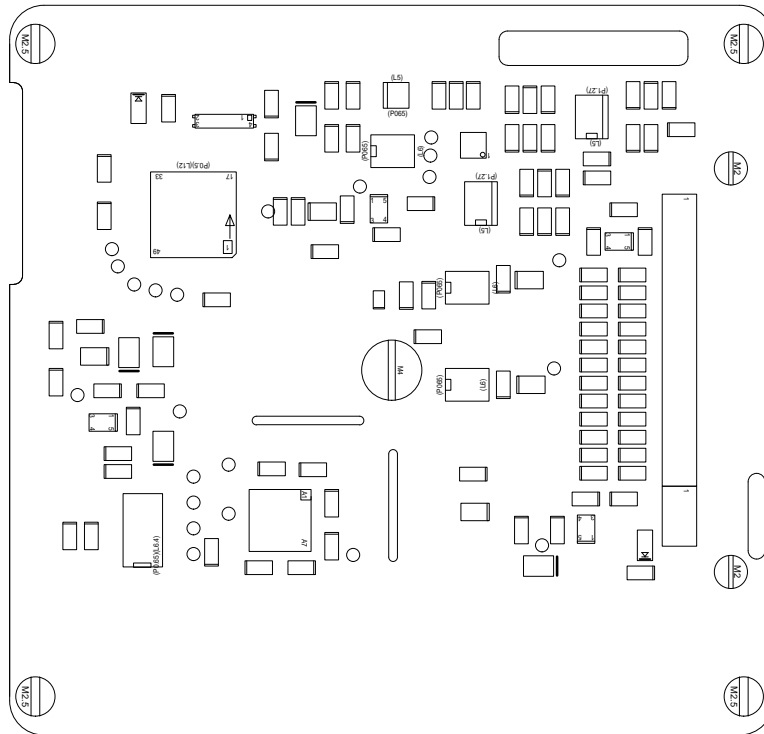
Thu Mar 6 13:04:32 MET 2008

MFG\_DATE: 03.03.2008

QUANTITY: 1

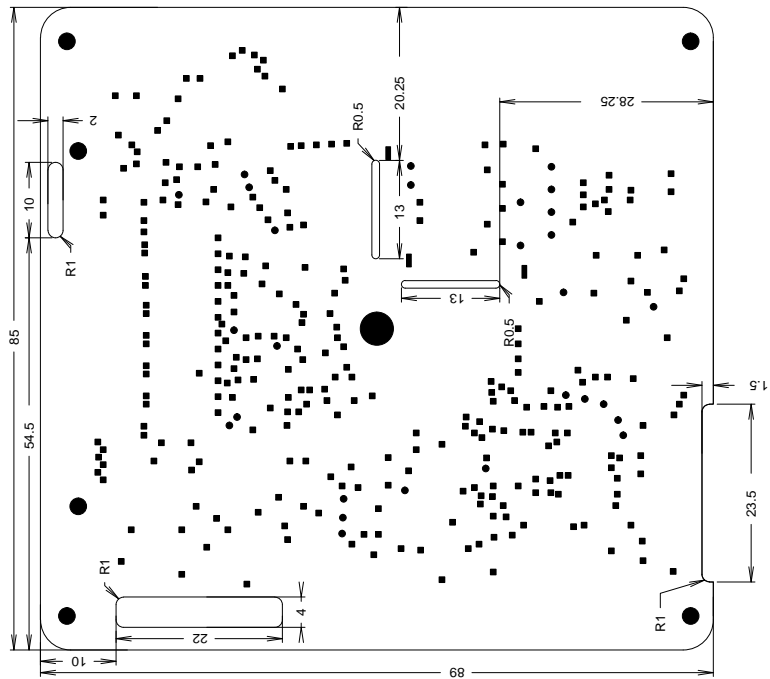
SOLDERMASK: mtop mbot

MATERIAL: FR4 : 1.6 mm

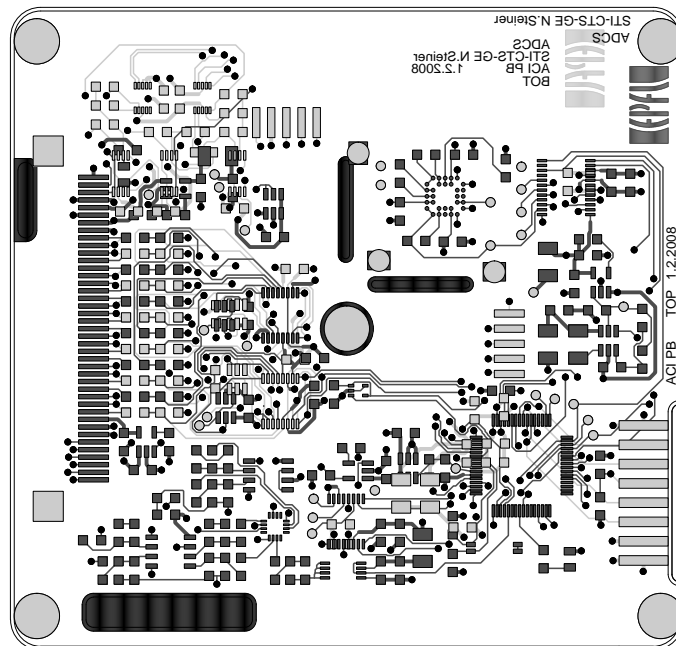


CONTENTS	PAGE
Drill	2
Etch	3
OutDetail_Bottom	4
OutDetail_Top	5
Outline_Bottom	6
Outline_Top	7
Gerber_ptop	8
Gerber_mtop	9
Gerber_top	10
Gerber_top1	11
Gerber_top2	12
Gerber_bot2	13
Gerber_bot1	14
Gerber_bot	15

CONTENTS	PAGE
Gerber_mbot	16
Gerber_pbot	17
Gerber_cont	18
Component Report	19 - 22
BOM Report	23 - 24
NC-Pins Report	25
Power-Pins Report	26 - 28
Single Node Nets	29



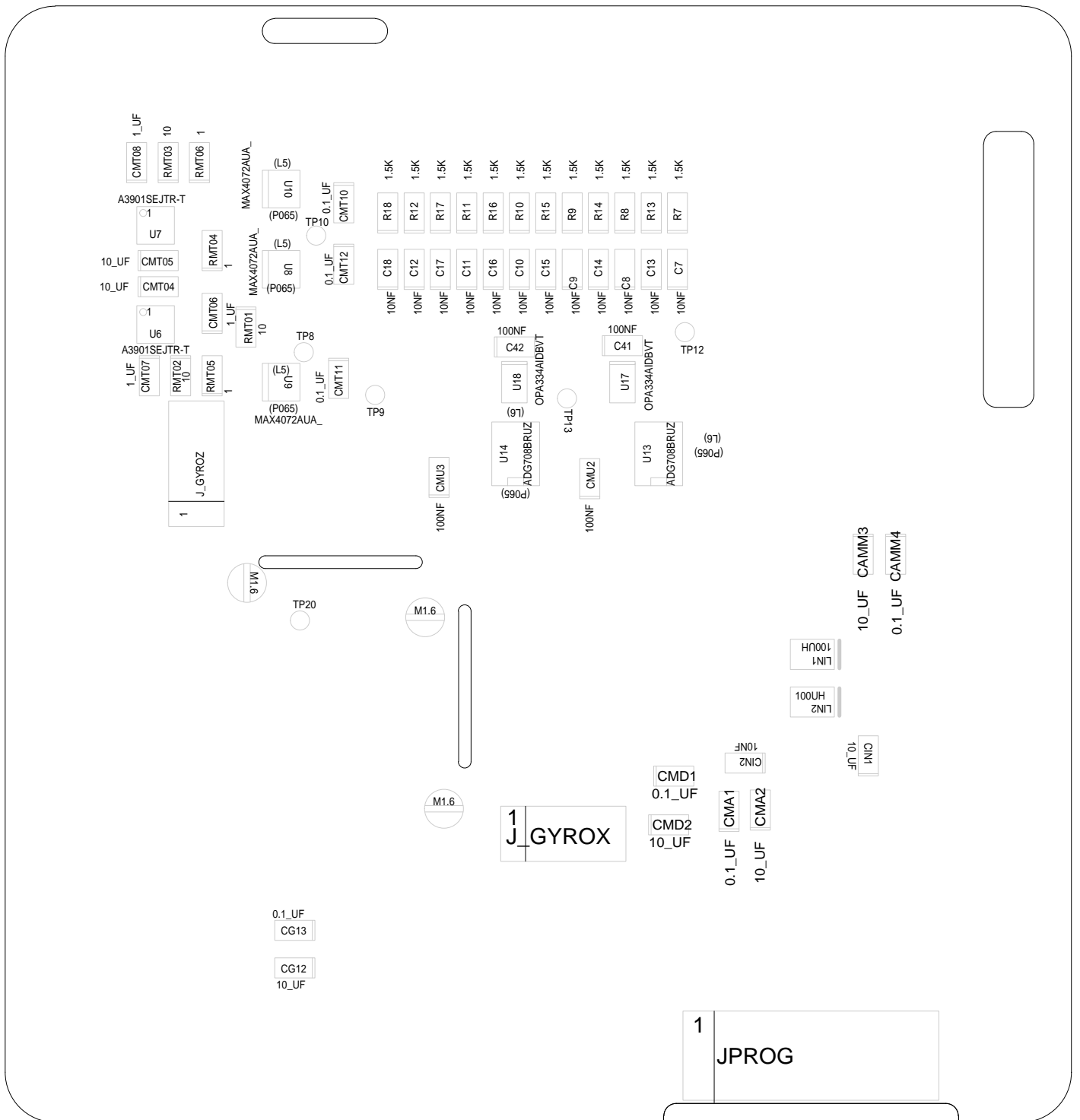
DRILL CHART			
FIGURE	SIZE	PLATED	QTY
•	0.401	PLATED	292
•	0.787	PLATED	28
■	1.7	PLATED	3
●	2.2	PLATED	6
●	4.4	PLATED	1

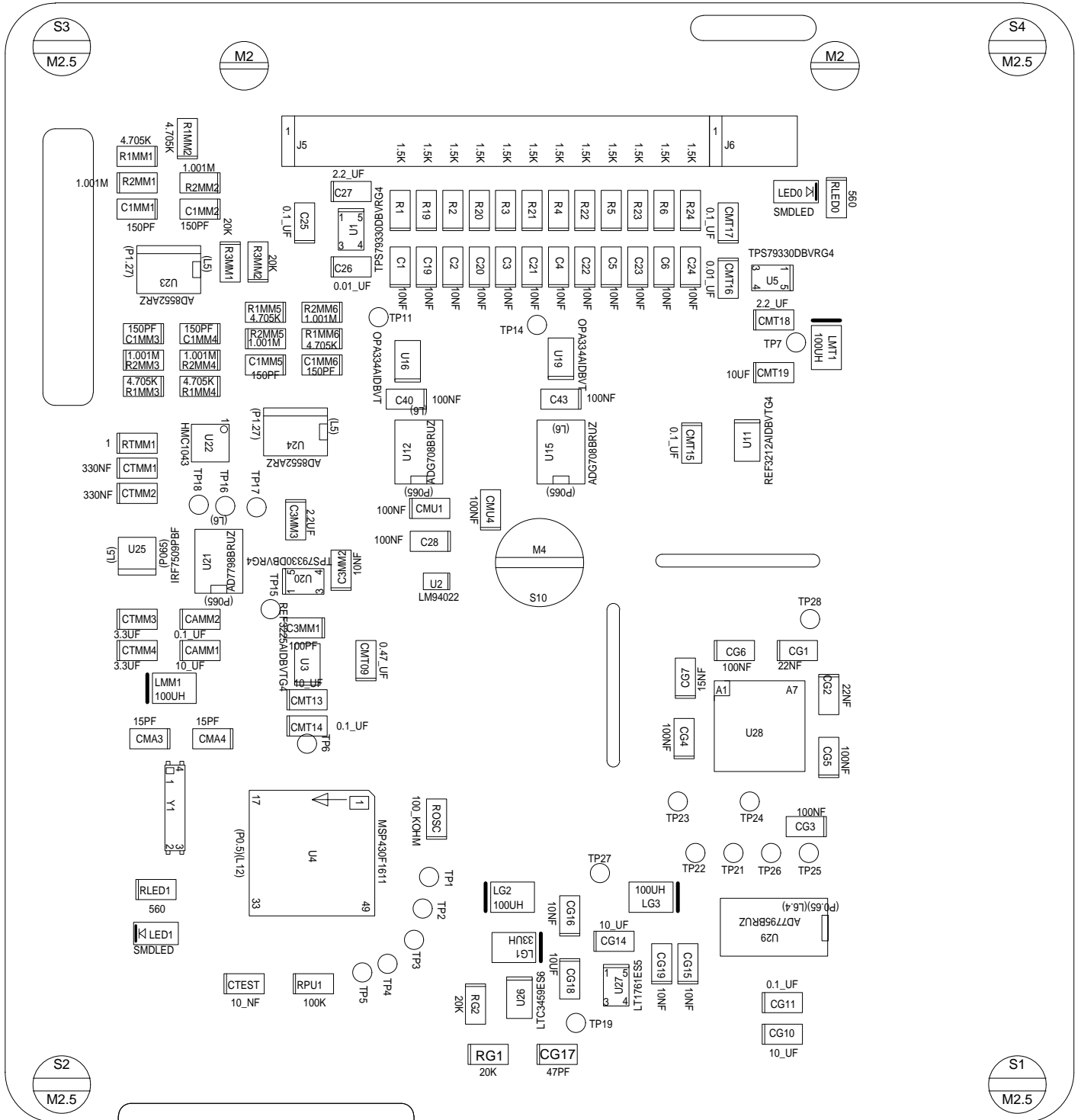


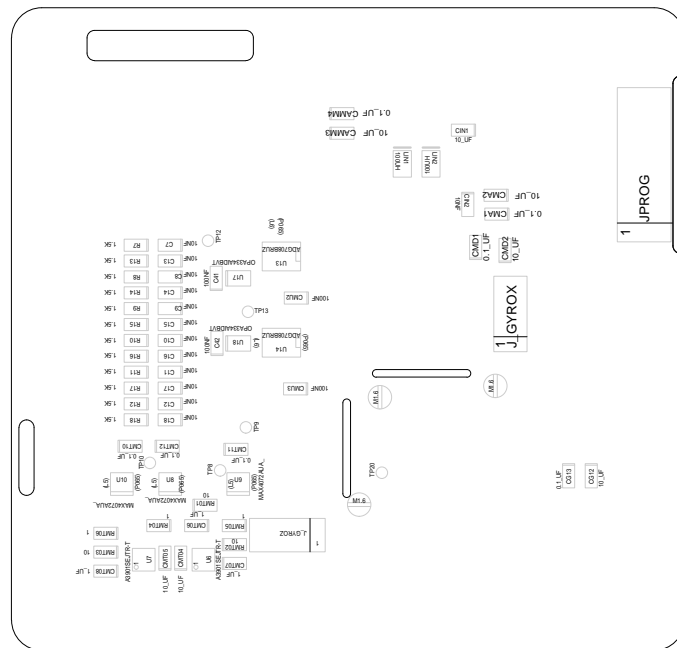
TITRE:ADCS

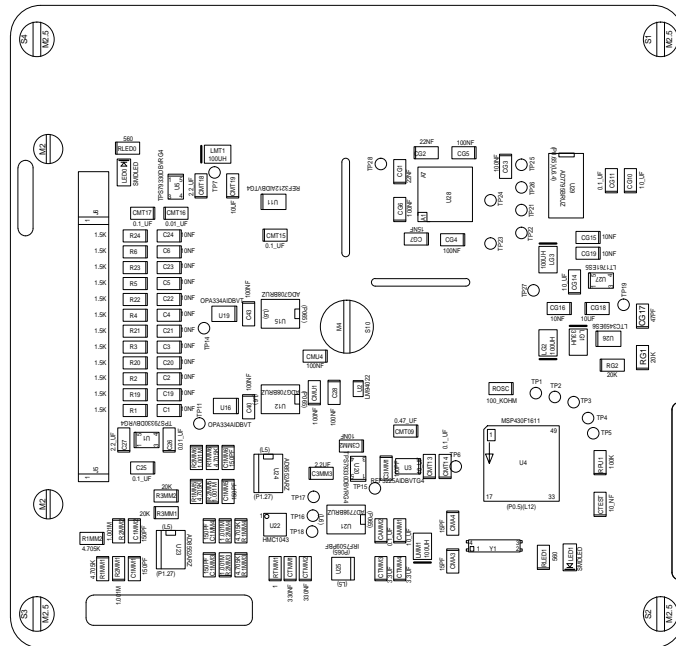
LABORATOIRE:STI-CTS-GE  
ENGINEER:N.Steiner

DATE:1.2.2008  
EPFL-ACORT-PB





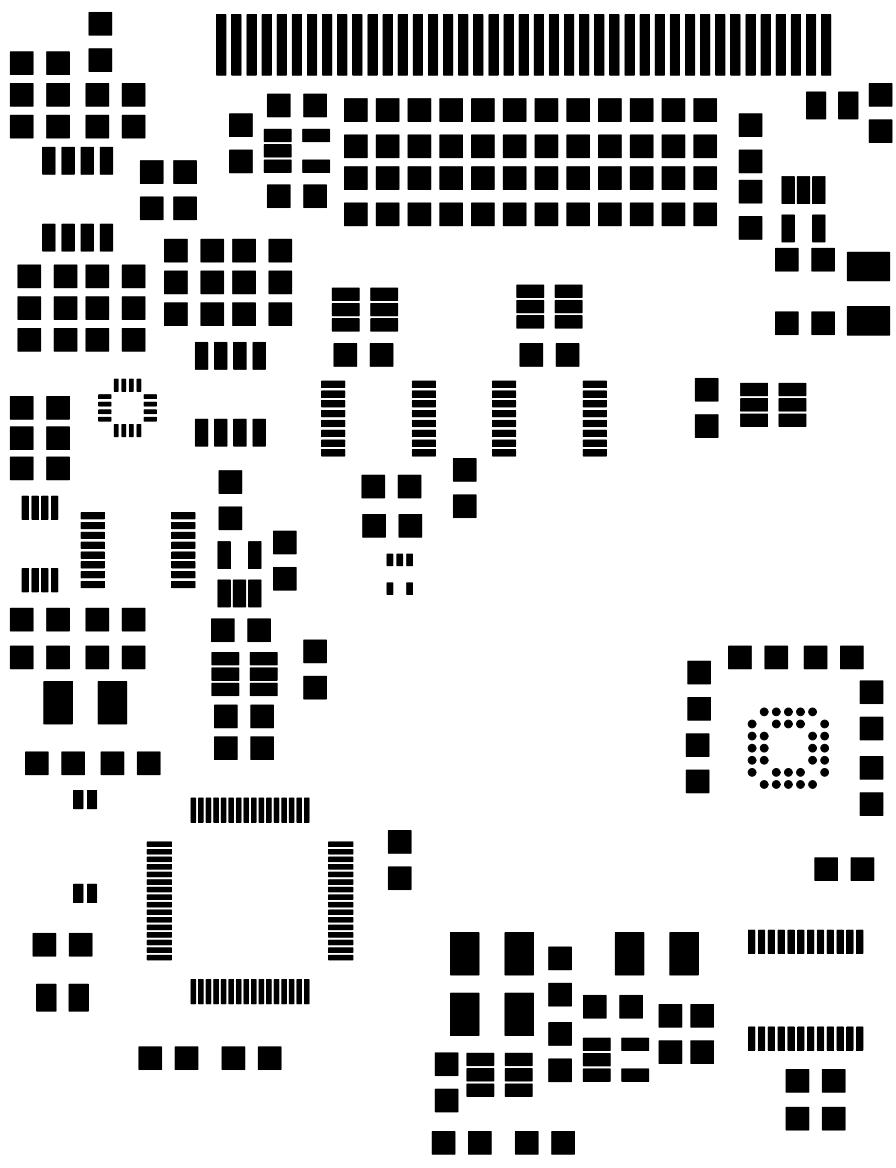




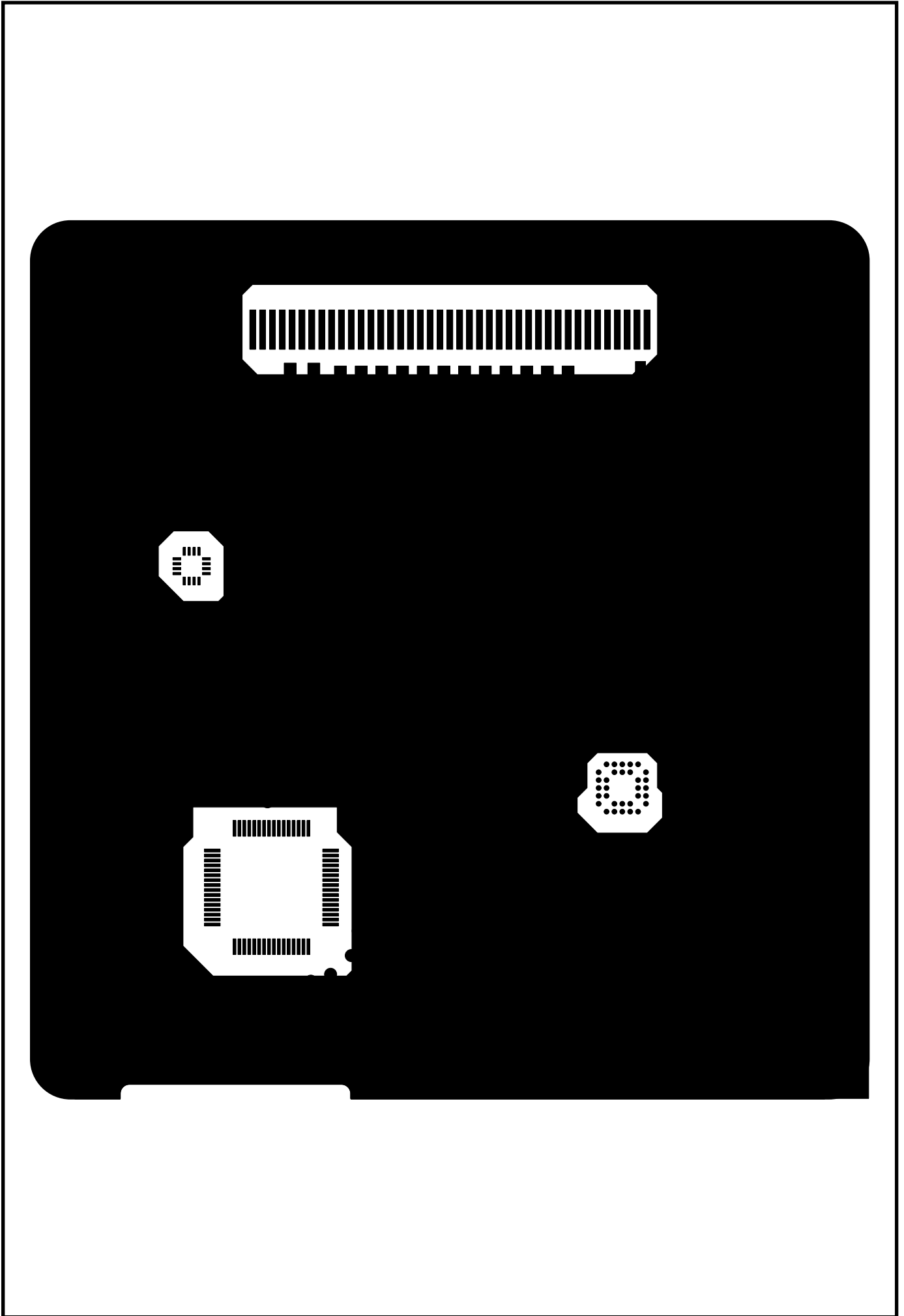
TITRE:ADCS

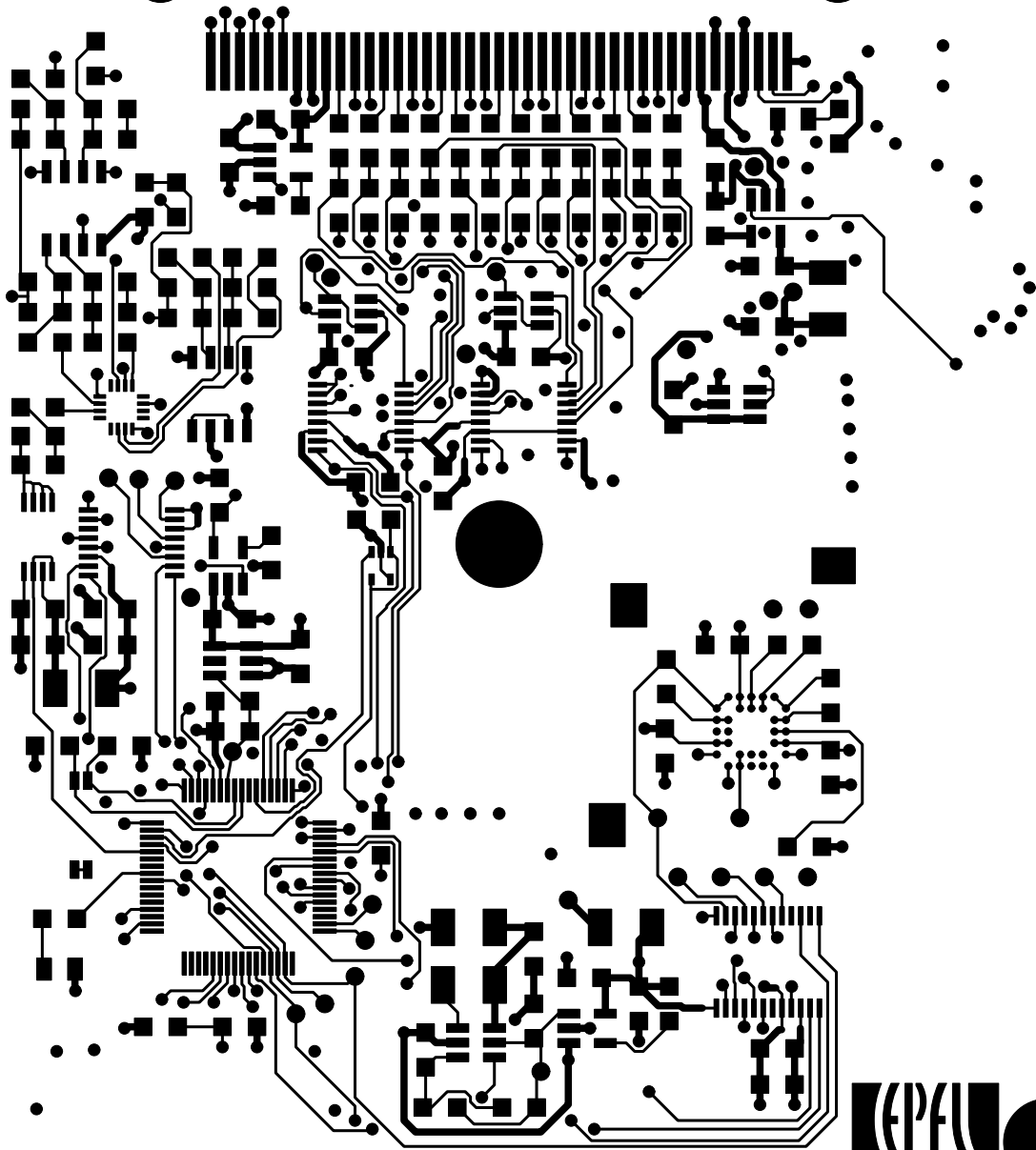
LABORATOIRE:STI-CTS-GE  
ENGINEER:N.Steiner

DATE:1.2.2008  
EPFL-ACORT-PB





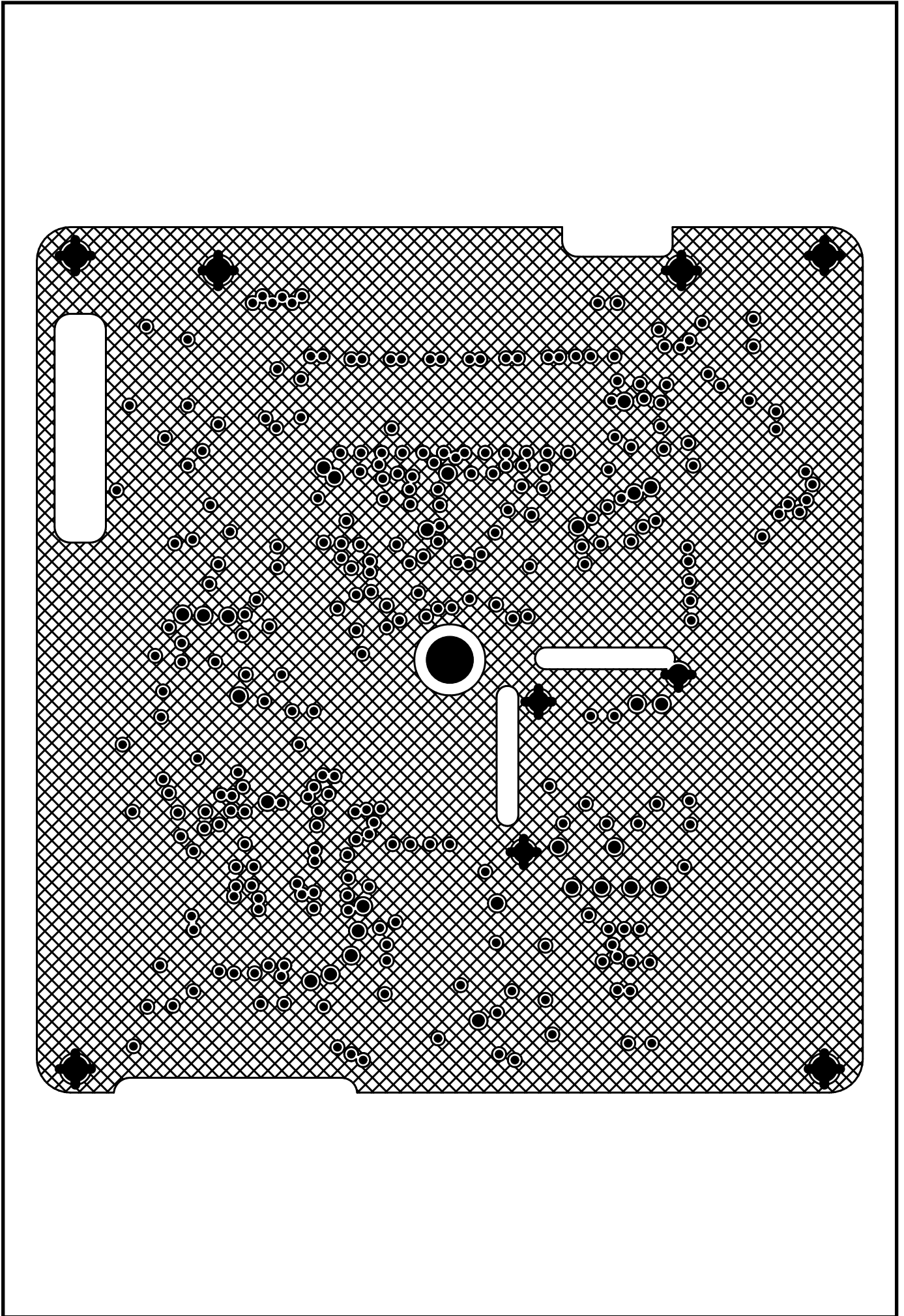


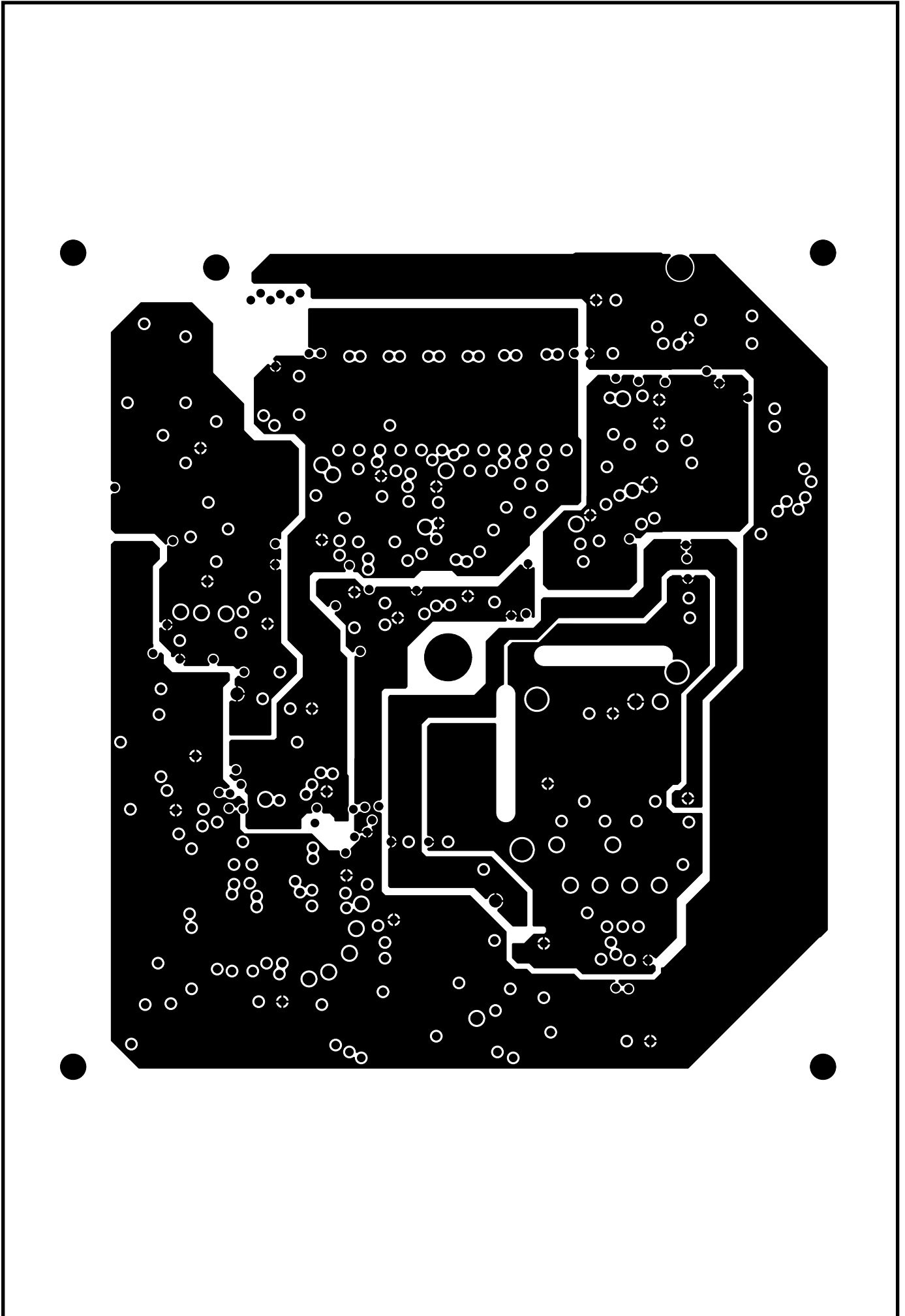


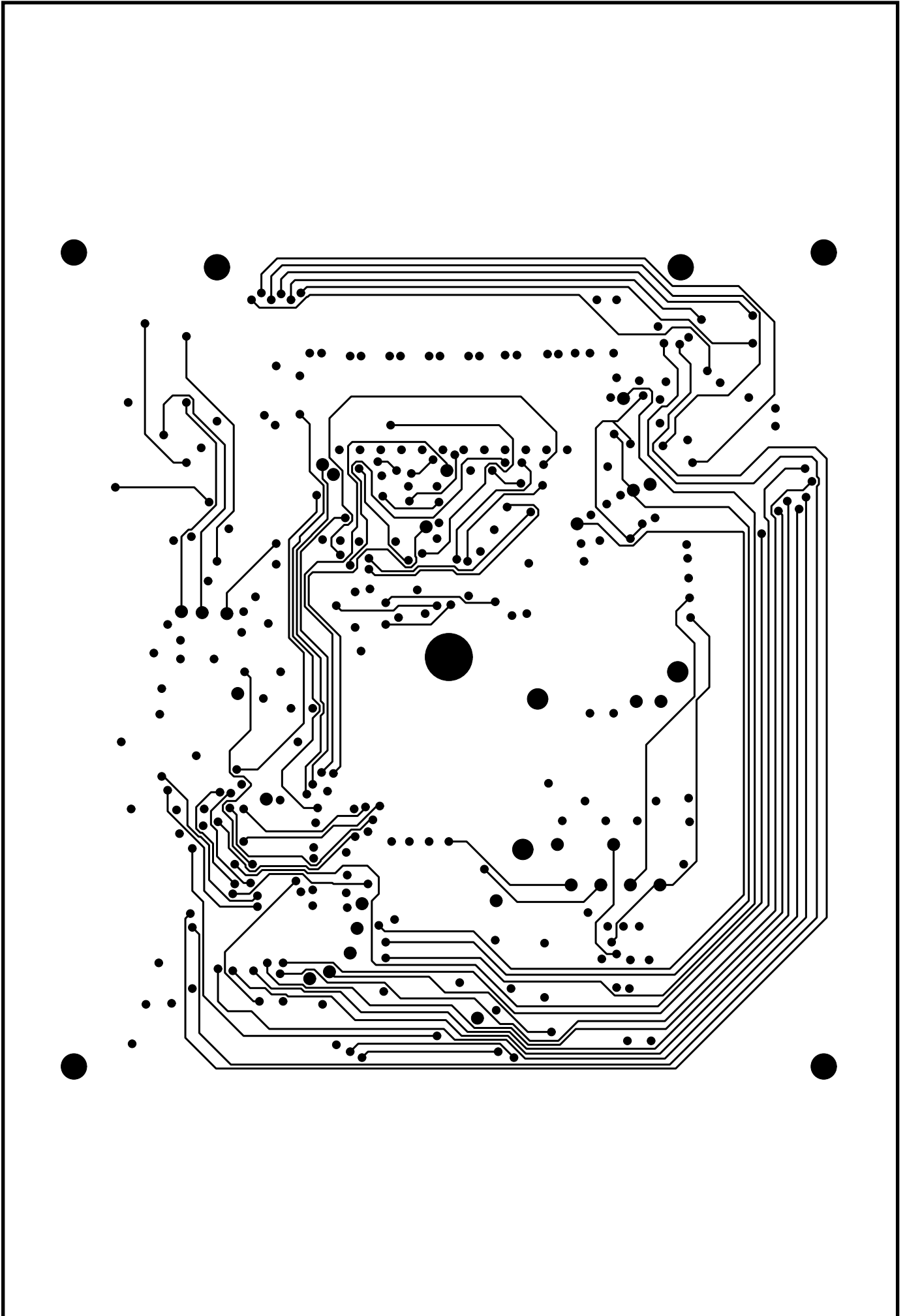
ACI PB TOP 1.2.2008

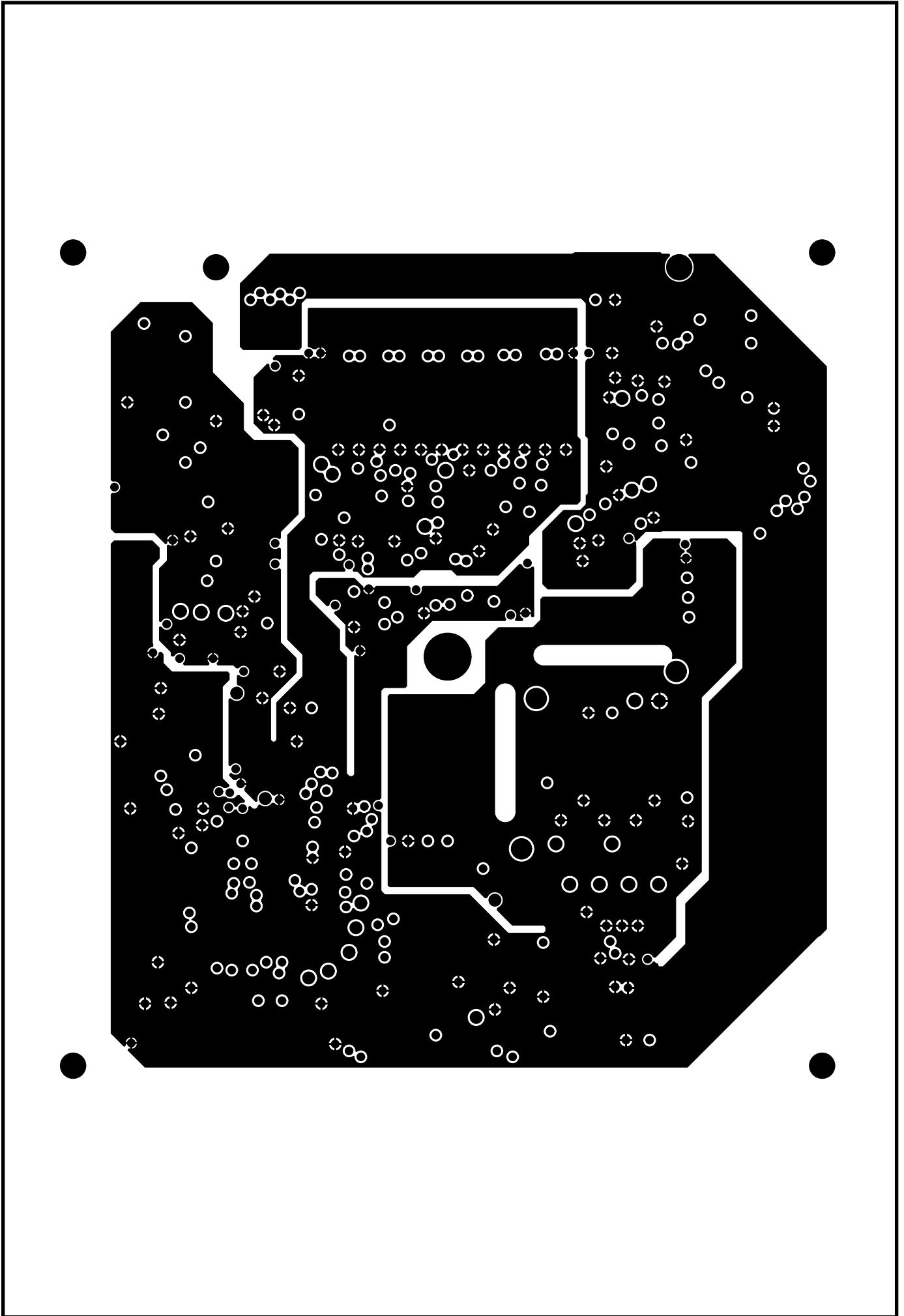


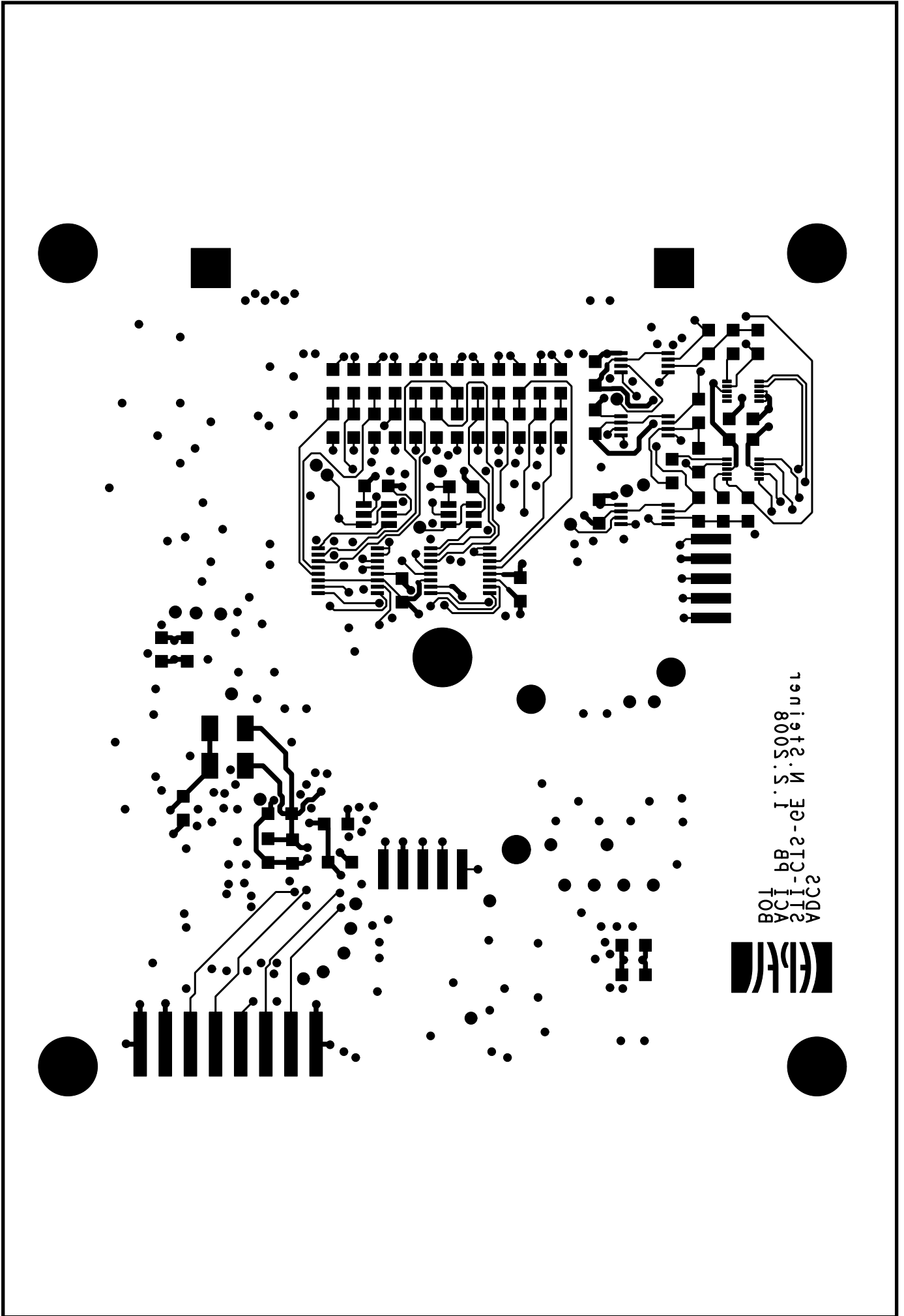
ADCS  
STI-CTS-GE N.Steiner





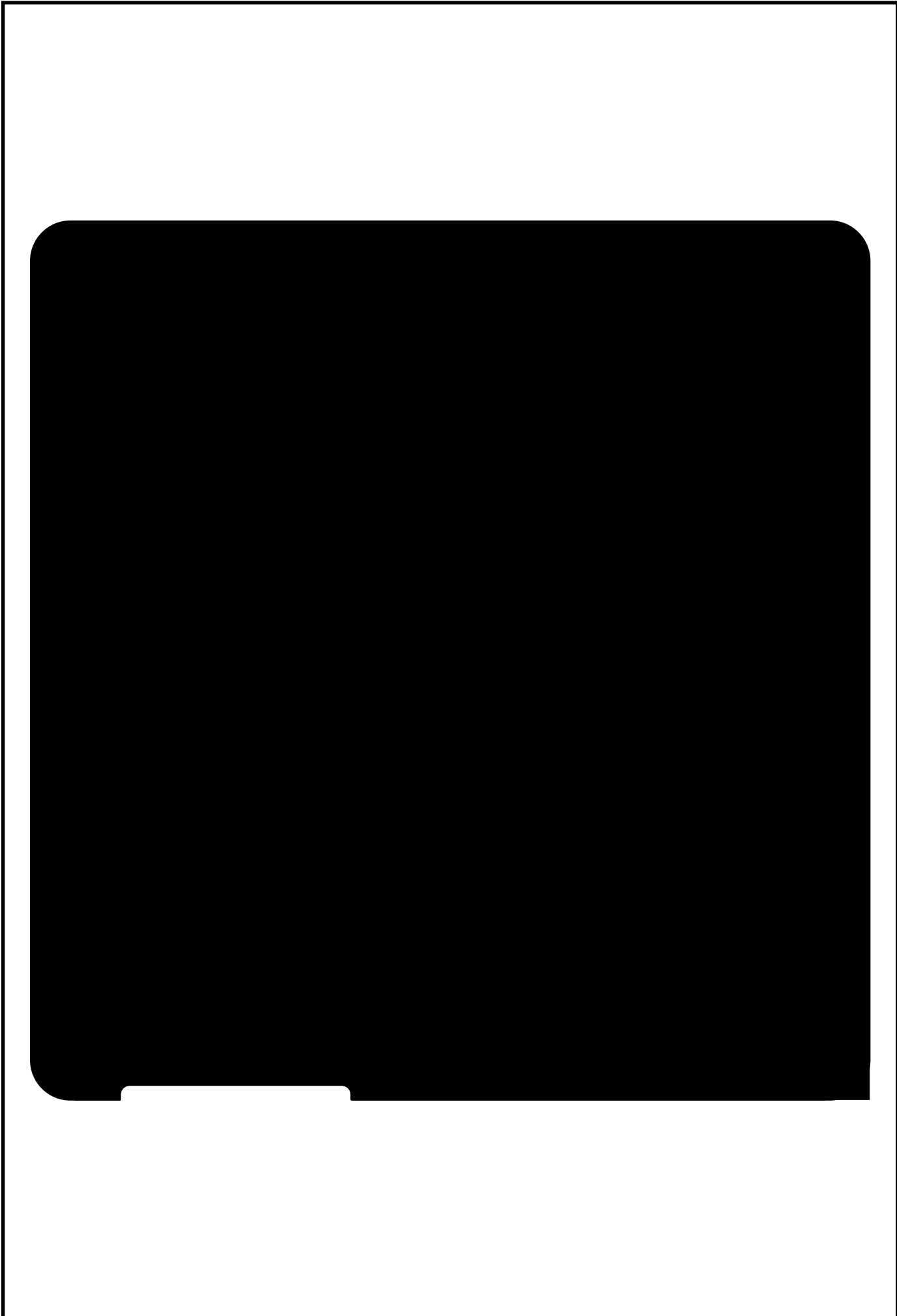




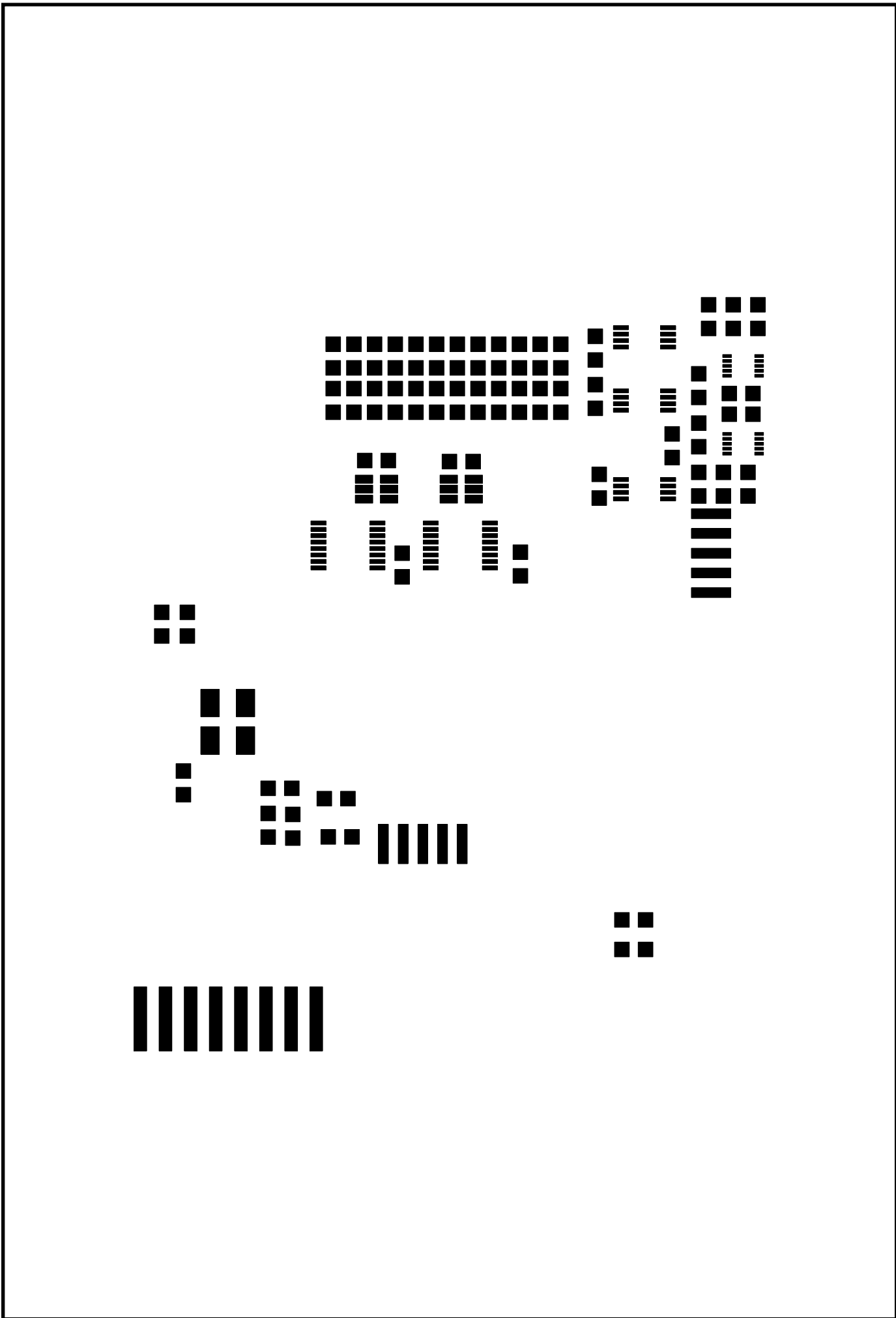


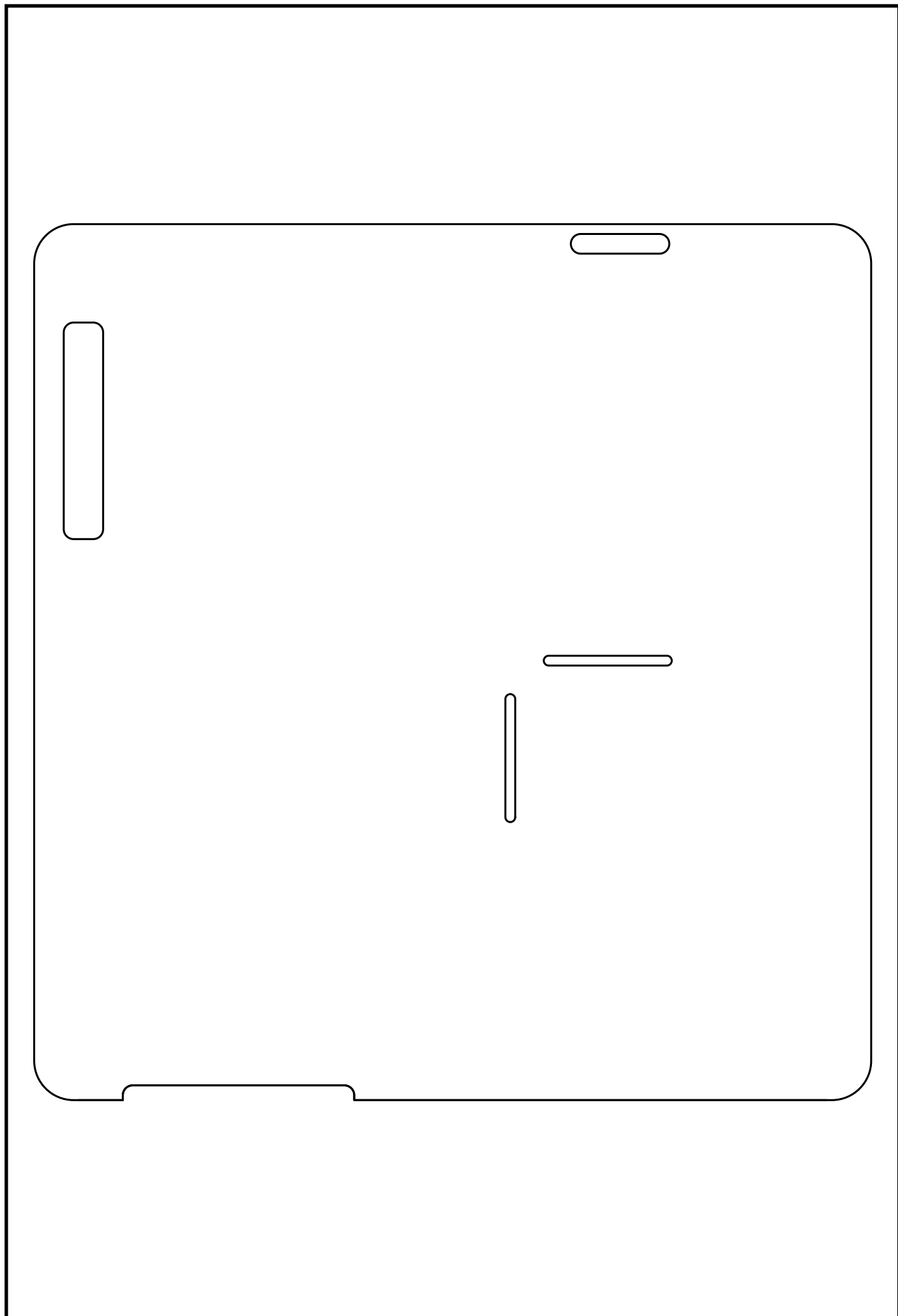
ADCS  
2T1T  
9E-CT2-CT1  
N.M. 5008  
I.S. 8008  
BOT











# Component Report ADCS

adcs\_gloss

Thu Mar 6 13:04:33 MET 2008

Ref Des	Device Type	Value	Package Type	x	y	ang	Mir	Remark
C1	10NF	10NF	0805	31.400	68.000	180.000	NO	
C2	10NF	10NF	0805	35.600	68.000	180.000	NO	
C3	10NF	10NF	0805	39.800	68.000	180.000	NO	
C4	10NF	10NF	0805	44.000	68.000	180.000	NO	
C5	10NF	10NF	0805	48.200	68.000	180.000	NO	
C6	10NF	10NF	0805	52.400	68.000	180.000	NO	
C7	10NF	10NF	0805	31.400	68.000	180.000	YES	
C8	10NF	10NF	0805	35.600	68.000	180.000	YES	
C9	10NF	10NF	0805	39.800	68.000	180.000	YES	
C10	10NF	10NF	0805	44.000	68.000	180.000	YES	
C11	10NF	10NF	0805	48.200	68.000	180.000	YES	
C12	10NF	10NF	0805	52.400	68.000	180.000	YES	
C13	10NF	10NF	0805	33.500	68.000	180.000	YES	
C14	10NF	10NF	0805	37.700	68.000	180.000	YES	
C15	10NF	10NF	0805	41.900	68.000	180.000	YES	
C16	10NF	10NF	0805	46.100	68.000	180.000	YES	
C17	10NF	10NF	0805	50.300	68.000	180.000	YES	
C18	10NF	10NF	0805	54.500	68.000	180.000	YES	
C19	10NF	10NF	0805	33.500	68.000	180.000	NO	
C20	10NF	10NF	0805	37.700	68.000	180.000	NO	
C21	10NF	10NF	0805	41.900	68.000	180.000	NO	
C22	10NF	10NF	0805	46.100	68.000	180.000	NO	
C23	10NF	10NF	0805	50.300	68.000	180.000	NO	
C24	10NF	10NF	0805	54.500	68.000	180.000	NO	
C25	0_1UF	0.1_UF	0805	23.800	71.500	180.000	NO	
C26	0_01UF	0.01_UF	0805	27.500	68.000	90.000	NO	
C27	2_2UF	2.2_UF	0805	27.500	74.000	90.000	NO	
C28	100NF	100NF	0805	33.800	46.200	270.000	NO	
C40	100NF	100NF	0805	31.900	57.500	270.000	NO	
C41	100NF	100NF	0805	35.800	61.900	270.000	YES	
C42	100NF	100NF	0805	44.400	61.800	270.000	YES	
C43	100NF	100NF	0805	44.200	57.500	270.000	NO	
C1MM1	150PF	150PF	0805	10.500	72.600	270.000	NO	
C1MM2	150PF	150PF	0805	15.500	72.600	270.000	NO	
C1MM3	150PF	150PF	0805	11.000	62.700	270.000	NO	
C1MM4	150PF	150PF	0805	15.500	62.700	270.000	NO	
C1MM5	150PF	150PF	0805	20.700	60.200	270.000	NO	
C1MM6	150PF	150PF	0805	25.200	60.200	270.000	NO	
C3MM1	100PF	100PF	0805	23.800	39.300	270.000	NO	
C3MM2	10NF	10NF	0805	26.700	43.900	180.000	NO	
C3MM3	2_2UF	2.2UF	0805	23.100	47.900	0.000	NO	
CAMM1	10UF	10_UF	0805	15.500	37.500	90.000	NO	
CAMM2	0_1UF	0.1_UF	0805	15.500	40.000	90.000	NO	
CAMM3	10UF	10_UF	0805	16.600	45.300	0.000	YES	
CAMM4	0_1UF	0.1_UF	0805	14.000	45.300	0.000	YES	
CG1	22NF	22NF	0805	63.000	37.500	90.000	NO	
CG2	22NF	22NF	0805	65.500	34.000	0.000	NO	
CG3	100NF	100NF	0805	63.700	23.500	270.000	NO	
CG4	100NF	100NF	0805	54.000	30.500	180.000	NO	
CG5	100NF	100NF	0805	65.500	29.000	180.000	NO	
CG6	100NF	100NF	0805	58.000	37.500	90.000	NO	
CG7	15NF	15NF	0805	54.100	35.300	180.000	NO	
CG10	10UF	10_UF	0805	61.800	7.000	90.000	NO	
CG11	0_1UF	0.1_UF	0805	61.800	9.500	90.000	NO	
CG12	10UF	10_UF	0805	61.900	12.300	90.000	YES	
CG13	0_1UF	0.1_UF	0805	61.900	15.300	90.000	YES	
CG14	10UF	10_UF	0805	48.400	14.400	90.000	NO	
CG15	10NF	10NF	0805	54.300	12.600	180.000	NO	

# Component Report ADCS

adcs\_gloss

Thu Mar 6 13:04:33 MET 2008

Ref Des	Device Type	Value	Package Type	x	y	ang	Mir	Remark
CG16	10NF	10NF	0805	44.900	16.400	180.000	NO	
CG17	47PF	47PF	0805	43.900	5.400	90.000	NO	
CG18	10UF	10UF	0805	44.900	11.400	0.000	NO	
CG19	10NF	10NF	0805	52.200	12.600	180.000	NO	
CIN1	10UF	10_UF	0805	16.200	29.200	180.000	YES	
CIN2	10NF	10NF	0805	26.000	28.650	90.000	YES	
CMA1	0_1UF	0.1_UF	0805	27.300	24.800	180.000	YES	
CMA2	10UF	10_UF	0805	24.800	24.900	180.000	YES	
CMA3	15PF	15PF	0805	11.500	30.500	270.000	NO	
CMA4	15PF	15PF	0805	16.500	30.500	270.000	NO	
CMD1	0_1UF	0.1_UF	0805	31.700	27.600	270.000	YES	
CMD2	10UF	10_UF	0805	32.100	23.720	270.000	YES	
CMT04	10UF	10_UF	0805	72.800	66.600	270.000	YES	
CMT05	10UF	10_UF	0805	72.800	68.700	270.000	YES	
CMT06	1UF	1_UF	0805	68.500	64.500	180.000	YES	
CMT07	1UF	1_UF	0805	73.500	59.500	0.000	YES	
CMT08	1UF	1_UF	0805	74.500	76.500	180.000	YES	
CMT09	0_47UF	0.47_UF	0805	28.700	36.700	180.000	NO	
CMT10	0_1UF	0.1_UF	0805	58.000	73.300	0.000	YES	
CMT11	0_1UF	0.1_UF	0805	58.400	59.300	0.000	YES	
CMT12	0_1UF	0.1_UF	0805	58.000	68.400	0.000	YES	
CMT13	10UF	10_UF	0805	24.000	33.600	90.000	NO	
CMT14	0_1UF	0.1_UF	0805	24.000	31.500	90.000	NO	
CMT15	0_1UF	0.1_UF	0805	54.600	54.000	0.000	NO	
CMT16	0_01UF	0.01_UF	0805	57.500	67.100	0.000	NO	
CMT17	0_1UF	0.1_UF	0805	57.500	71.500	180.000	NO	
CMT18	2_2UF	2.2_UF	0805	61.100	63.800	90.000	NO	
CMT19	10UF	10UF	0805	61.100	59.600	90.000	NO	
CMU1	100NF	100NF	0805	33.750	48.800	90.000	NO	
CMU2	100NF	100NF	0805	38.400	51.300	180.000	YES	
CMU3	100NF	100NF	0805	50.400	51.400	180.000	YES	
CMU4	100NF	100NF	0805	38.600	48.700	180.000	NO	
CTEST	10NF	10_NF	0805	19.000	11.000	90.000	NO	
CTMM1	330NF	330NF	0805	10.500	52.000	90.000	NO	
CTMM2	330NF	330NF	0805	10.500	50.000	90.000	NO	
CTMM3	3_3UF	3.3UF	0805	10.500	40.000	90.000	NO	
CTMM4	3_3UF	3.3UF	0805	10.500	37.500	90.000	NO	
J5	JCONNECT	JCONNECT	RIBBON_34_1MM	22.500	78.000	0.000	NO	
J6	JCONNECT	JCONNECT	RIBBON_7_1MM	56.500	78.000	0.000	NO	
JPROG	JPROG	JPROG	RIBBON_8_2_55MM	29.680	5.260	0.000	YES	
J_GYROX	JGYRO	JGYRO	RIBBON_5_2	44.500	23.000	0.000	YES	
J_GYROZ	JGYRO	JGYRO	RIBBON_5_2	69.750	48.500	270.000	YES	
LED0	SMDLED	SMDLED	SMDLED	62.900	74.000	270.000	NO	
LED1	SMDLED	SMDLED	SMDLED	12.000	15.000	90.000	NO	
LG1	33UH	33UH	1210	40.400	13.900	270.000	NO	
LG2	100UH	100UH	1210	40.400	17.900	90.000	NO	
LG3	100UH	100UH	1210	51.300	17.900	270.000	NO	
LIN1	100UH	100UH	1210	20.700	37.300	90.000	YES	
LIN2	100UH	100UH	1210	20.700	33.500	90.000	YES	
LMM1	100UH	100UH	1210	13.500	34.500	90.000	NO	
LMT1	100UH	100UH	1210	65.300	61.550	0.000	NO	
R1	1_5K	1.5K	0805	31.400	72.500	180.000	NO	
R2	1_5K	1.5K	0805	35.600	72.500	180.000	NO	
R3	1_5K	1.5K	0805	39.800	72.500	180.000	NO	
R4	1_5K	1.5K	0805	44.000	72.500	180.000	NO	
R5	1_5K	1.5K	0805	48.200	72.500	180.000	NO	
R6	1_5K	1.5K	0805	52.400	72.500	180.000	NO	
R7	1_5K	1.5K	0805	31.400	72.500	180.000	YES	

# Component Report ADCS

adcs\_gloss

Thu Mar 6 13:04:33 MET 2008

Ref Des	Device Type	Value	Package Type	x	y	ang	Mir	Remark
R8	1_5K	1.5K	0805	35.600	72.500	180.000	YES	
R9	1_5K	1.5K	0805	39.800	72.500	180.000	YES	
R10	1_5K	1.5K	0805	44.000	72.500	180.000	YES	
R11	1_5K	1.5K	0805	48.200	72.500	180.000	YES	
R12	1_5K	1.5K	0805	52.400	72.500	180.000	YES	
R13	1_5K	1.5K	0805	33.500	72.500	180.000	YES	
R14	1_5K	1.5K	0805	37.700	72.500	180.000	YES	
R15	1_5K	1.5K	0805	41.900	72.500	180.000	YES	
R16	1_5K	1.5K	0805	46.100	72.500	180.000	YES	
R17	1_5K	1.5K	0805	50.300	72.500	180.000	YES	
R18	1_5K	1.5K	0805	54.500	72.500	180.000	YES	
R19	1_5K	1.5K	0805	33.500	72.500	180.000	NO	
R20	1_5K	1.5K	0805	37.700	72.500	180.000	NO	
R21	1_5K	1.5K	0805	41.900	72.500	180.000	NO	
R22	1_5K	1.5K	0805	46.100	72.500	180.000	NO	
R23	1_5K	1.5K	0805	50.300	72.500	180.000	NO	
R24	1_5K	1.5K	0805	54.500	72.500	180.000	NO	
R1MM1	4_705K	4.705K	0805	10.500	76.800	270.000	NO	
R1MM2	4_705K	4.705K	0805	14.500	78.200	180.000	NO	
R1MM3	4_705K	4.705K	0805	11.000	58.500	270.000	NO	
R1MM4	4_705K	4.705K	0805	15.500	58.500	270.000	NO	
R1MM5	4_705K	4.705K	0805	20.700	64.400	270.000	NO	
R1MM6	4_705K	4.705K	0805	25.200	62.300	270.000	NO	
R2MM1	1_001M	1.001M	0805	10.500	74.700	90.000	NO	
R2MM2	1_001M	1.001M	0805	15.500	74.700	270.000	NO	
R2MM3	1_001M	1.001M	0805	11.000	60.600	90.000	NO	
R2MM4	1_001M	1.001M	0805	15.500	60.600	270.000	NO	
R2MM5	1_001M	1.001M	0805	20.700	62.300	90.000	NO	
R2MM6	1_001M	1.001M	0805	25.200	64.400	270.000	NO	
R3MM1	20K	20K	0805	17.900	68.400	0.000	NO	
R3MM2	20K	20K	0805	20.100	68.400	180.000	NO	
RG1	20K	20K	0805	38.400	5.400	90.000	NO	
RG2	20K	20K	0805	37.400	9.400	0.000	NO	
RGND1	0	0	0805					
RGND4	0	0	0805					
RGND5	0	0	0805					
RLED0	560	560	0805	66.100	73.500	0.000	NO	
RLED1	560	560	0805	12.000	18.500	90.000	NO	
RMT01	10	10	0805	65.800	63.400	0.000	YES	
RMT02	10	10	0805	71.000	59.500	0.000	YES	
RMT03	10	10	0805	72.000	76.500	180.000	YES	
RMT04	1	1	0805	68.500	69.500	180.000	YES	
RMT05	1	1	0805	68.500	59.500	180.000	YES	
RMT06	1	1	0805	69.500	76.500	180.000	YES	
ROSC	100KOHM	100_KOHM	0805	34.300	24.100	180.000	NO	
RPU1	100K	100K	0805	24.500	11.000	90.000	NO	
RTMM1	1	1	0805	10.500	54.000	90.000	NO	
S1	SCREW	SCREW	VIS2_5	80.500	3.000	0.000	NO	
S2	SCREW	SCREW	VIS2_5	4.500	3.000	0.000	NO	
S3	SCREW	SCREW	VIS2_5	4.500	85.500	0.000	NO	
S4	SCREW	SCREW	VIS2_5	80.500	85.500	0.000	NO	
S5	SCREW	SCREW	VIS2_4X4MM	19.000	84.000	0.000	NO	
S6	SCREW	SCREW	VIS2_4X4MM	66.000	84.000	0.000	NO	
S7	SCREW	SCREW	VIS1_6_2_5X3MM	65.700	43.000	90.000	YES	
S8	SCREW	SCREW	VIS1_6_2_5X3MM	50.000	25.000	0.000	YES	
S9	SCREW	SCREW	VIS1_6_2_5X3MM	51.500	40.250	0.000	YES	
S10	SCREW	SCREW	VIS4_6	42.500	44.500	0.000	NO	
TP1	TEST_PAD	TEST_PAD	TP4931	33.700	19.500	270.000	NO	

# Component Report ADCS

adcs\_gloss

Thu Mar 6 13:04:33 MET 2008

Ref Des	Device Type	Value	Package Type	x	y	ang	Mir	Remark
TP2	TEST_PAD	TEST_PAD	TP4931	33.200	17.000	270.000	NO	
TP3	TEST_PAD	TEST_PAD	TP4931	32.500	14.500	270.000	NO	
TP4	TEST_PAD	TEST_PAD	TP4931	30.400	12.600	270.000	NO	
TP5	TEST_PAD	TEST_PAD	TP4931	28.400	11.900	270.000	NO	
TP6	TEST_PAD	TEST_PAD	TP4931	24.000	30.100	270.000	NO	
TP7	TEST_PAD	TEST_PAD	TP4931	62.900	62.000	180.000	NO	
TP8	TEST_PAD	TEST_PAD	TP4931	61.200	61.400	0.000	YES	
TP9	TEST_PAD	TEST_PAD	TP4931	55.500	58.000	0.000	YES	
TP10	TEST_PAD	TEST_PAD	TP4931	60.200	70.700	0.000	YES	
TP11	TEST_PAD	TEST_PAD	TP4931	29.700	64.000	0.000	NO	
TP12	TEST_PAD	TEST_PAD	TP4931	30.800	63.000	0.000	YES	
TP13	TEST_PAD	TEST_PAD	TP4931	40.200	57.700	90.000	YES	
TP14	TEST_PAD	TEST_PAD	TP4931	42.300	63.400	0.000	NO	
TP15	TEST_PAD	TEST_PAD	TP4931	21.100	40.800	270.000	NO	
TP16	TEST_PAD	TEST_PAD	TP4931	17.500	49.000	270.000	NO	
TP17	TEST_PAD	TEST_PAD	TP4931	20.000	48.900	270.000	NO	
TP18	TEST_PAD	TEST_PAD	TP4931	15.400	49.100	270.000	NO	
TP19	TEST_PAD	TEST_PAD	TP4931	45.400	7.900	0.000	NO	
TP20	TEST_PAD	TEST_PAD	TP4931	61.500	40.000	0.000	YES	
TP21	TEST_PAD	TEST_PAD	TP4931	57.900	21.400	0.000	NO	
TP22	TEST_PAD	TEST_PAD	TP4931	54.900	21.400	0.000	NO	
TP23	TEST_PAD	TEST_PAD	TP4931	53.500	25.500	0.000	NO	
TP24	TEST_PAD	TEST_PAD	TP4931	59.200	25.500	0.000	NO	
TP25	TEST_PAD	TEST_PAD	TP4931	63.900	21.400	0.000	NO	
TP26	TEST_PAD	TEST_PAD	TP4931	60.900	21.400	0.000	NO	
TP27	TEST_PAD	TEST_PAD	TP4931	47.300	19.800	0.000	NO	
TP28	TEST_PAD	TEST_PAD	TP4931	64.000	40.000	0.000	NO	
U1	TPS79330DBVRG	TPS79330DBVRG	SOT23_5	27.500	71.000	0.000	NO	
U2	LM94022	LM94022	SC70_5	34.300	43.000	270.000	NO	
U3	REF3225AIDBVT	REF3225AIDBVT	SOT23_6	24.036	36.400	180.000	NO	
U4	MSP430F1611	MSP430F1611	STQFP64	24.400	21.400	270.000	NO	
U5	TPS79330DBVRG	TPS79330DBVRG	SOT23_5	61.000	67.137	270.000	NO	
U6	A3901SEJTR	A3901SEJTR	TDFN3X3_10	73.000	63.600	0.000	YES	
U7	A3901SEJTR	A3901SEJTR	TDFN3X3_10	73.000	71.500	0.000	YES	
U8	MAX4072AUA_	MAX4072AUA_	MSO8	63.000	68.000	0.000	YES	
U9	MAX4072AUA_	MAX4072AUA_	MSO8	63.000	59.000	0.000	YES	
U10	MAX4072AUA_	MAX4072AUA_	MSO8	63.000	74.400	0.000	YES	
U11	REF3212AIDBVT	REF3212AIDBVT	SOT23_6	59.000	54.200	0.000	NO	
U12	ADG708BRUZ	ADG708BRUZ	TSSOP16	32.900	53.300	180.000	NO	
U13	ADG708BRUZ	ADG708BRUZ	TSSOP16	32.900	53.300	180.000	YES	
U14	ADG708BRUZ	ADG708BRUZ	TSSOP16	44.300	53.300	180.000	YES	
U15	ADG708BRUZ	ADG708BRUZ	TSSOP16	44.200	53.300	180.000	NO	
U16	OPA334AIDBVT	OPA334AIDBVT	SOT23_6	32.000	60.500	180.000	NO	
U17	OPA334AIDBVT	OPA334AIDBVT	SOT23_6	35.800	59.000	0.000	YES	
U18	OPA334AIDBVT	OPA334AIDBVT	SOT23_6	44.400	59.000	0.000	YES	
U19	OPA334AIDBVT	OPA334AIDBVT	SOT23_6	44.200	60.700	180.000	NO	
U20	TPS79330DBVRG	TPS79330DBVRG	SOT23_5	23.700	43.000	90.000	NO	
U21	AD7798BRUZ	AD7798BRUZ	TSSOP16	16.995	44.600	180.000	NO	
U22	HMC1043	HMC1043	QFN3X3_16	16.300	54.000	270.000	NO	
U23	AD8552ARZ	AD8552ARZ	SO8	13.000	67.800	270.000	NO	
U24	AD8552ARZ	AD8552ARZ	SO8	23.100	54.900	270.000	NO	
U25	IRF7509PBF	IRF7509PBF	MSO8	10.500	45.000	90.000	NO	
U26	LTC3459ES6	LTC3459ES6	SOT23_6	40.900	9.900	0.000	NO	
U27	LT1761ES5	LT1761ES5	SOT23_5	48.600	10.900	0.000	NO	
U28	ADXRS614BGZ	ADXRS614BGZ	PBGA32_08MM	60.000	31.500	0.000	NO	
U29	AD7795BRUZ	AD7795BRUZ	TSSOP24	60.500	15.500	270.000	NO	
Y1	MC146	MC146	OSC_MC146_SMD	13.500	25.000	270.000	NO	

Total Component count 231

# BOM Report ADCS

adcs\_gloss

Thu Mar 6 13:04:33 MET 2008

Device	Package	Value	Nb	Reference Designators					Remark
0	0805	0	3	RGND1	RGND4	RGND5			
0_01UF	0805	0.01_UF	2	C26	CMT16				
0_1UF	0805	0.1_UF	13	C25	CAMM2	CAMM4	CG11	CG13	
				CMA1	CMD1	CMT10	CMT11	CMT12	
				CMT14	CMT15	CMT17			
0_47UF	0805	0.47_UF	1	CMT09					
1	0805	1	4	RMT04	RMT05	RMT06	RTMM1		
10	0805	10	3	RMT01	RMT02	RMT03			
100K	0805	100K	1	RPU1					
100KOHM	0805	100_KOHM	1	ROSC					
100NF	0805	100NF	13	C28	C40	C41	C42	C43	
				CG3	CG4	CG5	CG6	CMU1	
				CMU2	CMU3	CMU4			
100PF	0805	100PF	1	C3MM1					
100UH	1210	100UH	6	LG2	LG3	LIN1	LIN2	LMM1	
				LMT1					
10NF	0805	10NF	29	C1	C2	C3	C4	C5	
				C6	C7	C8	C9	C10	
				C11	C12	C13	C14	C15	
				C16	C17	C18	C19	C20	
				C21	C22	C23	C24	C3MM2	
				CG15	CG16	CG19	CIN2		
10NF-1	0805	10_NF	1	CTEST					
10UF	0805	10_UF	11	CAMM1	CAMM3	CG10	CG12	CG14	
				CIN1	CMA2	CMD2	CMT04	CMT05	
				CMT13					
10UF-1	0805	10UF	2	CG18	CMT19				
150PF	0805	150PF	6	C1MM1	C1MM2	C1MM3	C1MM4	C1MM5	
				C1MM6					
15NF	0805	15NF	1	CG7					
15PF	0805	15PF	2	CMA3	CMA4				
1UF	0805	1_UF	3	CMT06	CMT07	CMT08			
1_001M	0805	1.001M	6	R2MM1	R2MM2	R2MM3	R2MM4	R2MM5	
				R2MM6					
1_5K	0805	1.5K	24	R1	R2	R3	R4	R5	
				R6	R7	R8	R9	R10	
				R11	R12	R13	R14	R15	
				R16	R17	R18	R19	R20	
				R21	R22	R23	R24		
20K	0805	20K	4	R3MM1	R3MM2	RG1	RG2		
22NF	0805	22NF	2	CG1	CG2				
2_2UF	0805	2.2UF	1	C3MM3					
2_2UF-1	0805	2.2_UF	2	C27	CMT18				
330NF	0805	330NF	2	CTMM1	CTMM2				
33UH	1210	33UH	1	LG1					
3_3UF	0805	3.3UF	2	CTMM3	CTMM4				
47PF	0805	47PF	1	CG17					
4_705K	0805	4.705K	6	R1MM1	R1MM2	R1MM3	R1MM4	R1MM5	
				R1MM6					
560	0805	560	2	RLED0	RLED1				
A3901SEJTR-T	TDFN3X3_10	A3901SEJTR	2	U6	U7				
AD7795BRUZ	TSSOP24	AD7795BRUZ	1	U29					
AD7798BRUZ	TSSOP16	AD7798BRUZ	1	U21					
AD8552ARZ	SO8	AD8552ARZ	2	U23	U24				
ADG708BRUZ	TSSOP16	ADG708BRUZ	4	U12	U13	U14	U15		
ADXRS614BGZ	PBGA32_08MM	ADXRS614BGZ	1	U28					
HMC1043	QFN3X3_16	HMC1043	1	U22					
IRF7509PBF	MSO8	IRF7509PBF	1	U25					

# BOM Report ADCS

adcs\_gloss

Thu Mar 6 13:04:33 MET 2008

Device	Package	Value	Nb	Reference Designators	Remark
JCONNECT	RIBBON_34_1MM	JCONNECT	1	J5	
JCONNECT-1	RIBBON_7_1MM	JCONNECT	1	J6	
JGYRO	RIBBON_5_2	JGYRO	2	J_GYROXJ_GYROZ	
JPROG	RIBBON_8_2_55MM	JPROG	1	JPROG	
LM94022	SC70_5	LM94022	1	U2	
LT1761ES5-5	SOT23_5	LT1761ES5	1	U27	
LTC3459ES6	SOT23_6	LTC3459ES6	1	U26	
MAX4072AUA_	MSO8	MAX4072AUA_3		U8 U9 U10	
MC146	OSC_MC146_SMD	MC146	1	Y1	
MSP430F1611	STQFP64	MSP430F1611	1	U4	
OPA334AIDBVT	SOT23_6	OPA334AIDBVT	4	U16 U17 U18 U19	
REF3212AIDBVT	SOT23_6	REF3212AIDBVT	4	U11	
REF3225AIDBVT	SOT23_6	REF3225AIDBVT	4	U3	
SCREW	VIS2_5	SCREW	4	S1 S2 S3 S4	
SCREW-1	VIS2_4X4MM	SCREW	2	S5 S6	
SCREW-2	VIS1_6_2_5X3MM	SCREW	3	S7 S8 S9	
SCREW-3	VIS4_6	SCREW	1	S10	
SMDLED	SMDLED	SMDLED	2	LED0 LED1	
TEST_PAD	TP4931	TEST_PAD	28	TP1 TP2 TP3 TP4 TP5 TP6 TP7 TP8 TP9 TP10 TP11 TP12 TP13 TP14 TP15 TP16 TP17 TP18 TP19 TP20 TP21 TP22 TP23 TP24 TP25 TP26 TP27 TP28	
TPS79330DBVRG	SOT23_5	TPS79330DBVRG	4	U1 U5 U20	

Total Component count 231



# NC Pins Report ADCS

adcs\_gloss

Thu Mar 6 13:04:34 MET 2008

Ref Des	Device	Nb	Not Connected Pins											Remark
S10	SCREW-3	1	1											
U3	REF3225AIDBVT	1	5											
U4	MSP430F1611	15	7	22	23	26	27	28	30	32	33	34		
			35	36	48	51	52							
U7	A3901SEJTR-T	2	6	7										
U21	AD7798BRUZ	1	11											
U22	HMC1043	6	4	8	9	13	14	16						
U28	ADXRS614BGZ	6	D1	D2	F4	F5	G4	G5						
U29	AD7795BRUZ	3	2	4		19								

Total count 35

# Power Pins Report ADCS

adcs\_gloss

Thu Mar 6 13:04:35 MET 2008

Ref Des	Device	Name	Power Pins	Remark
C3MM1	100PF	AVCC33	2	
		GND	1 1	
C3MM3	2_2UF	AVCC_MM	2	
		GND	1 1	
CAMM1	10UF	VSUN	2	
CAMM2	0_1UF	GND	1	
		VSUN	2	
CAMM3	10UF	AVCC_MM	2	
		GND	1	
CAMM4	0_1UF	AVCC_MM	2	
		GND	1	
CG3	100NF	GND	1	
CG4	100NF	GND	1	
CG5	100NF	GND	1	
CG6	100NF	GND	1	
CG10	10UF	GND	1	
		VSUN	2	
CG11	0_1UF	GND	1	
		VSUN	2	
CG12	10UF	GND	1	
CG13	0_1UF	GND	1	
CG14	10UF	GND	1	
CG16	10NF	GND	1	
CG18	10UF-1	GND	1	
CG19	10NF	GND	1 1	
CIN1	10UF	VSUN	2	
CIN2	10NF	AVCC33	2	
		GND	1	
CMA1	0_1UF	AVCC33	2	
		GND	1	
CMA2	10UF	AVCC33	2	
		GND	1 2	
CMA4	15PF	GND	1	
CMD1	0_1UF	GND	1	
		VSUN	2	
CMD2	10UF	GND	1	
		VSUN	2	
CMT04	10UF	GND	1	
CMT05	10UF	GND	1	
CMT09	0_47UF	AVCC33	2	
		GND	1 1	
CMT11	0_1UF	GND	1	
CMT12	0_1UF	GND	1	
CMT13	10UF	GND	1	
CMT14	0_1UF	GND	1	
CMT15	0_1UF	GND	1	
CMT16	0_01UF	GND	1	
CMT17	0_1UF	GND	1	
		VSUN	2	
CMT18	2_2UF-1	GND	1	
CMT19	10UF-1	GND	1	
CMU1	100NF	GND	1	
		VSUN	2	
CMU2	100NF	GND	1	
		VSUN	2	
CMU3	100NF	GND	1	
		VSUN	2	

# Power Pins Report ADCS

adcs\_gloss

Thu Mar 6 13:04:35 MET 2008

Ref Des	Device	Name	Power Pins				Remark
CMU4	100NF	GND	1				
		VSUN	2				
CTEST	10NF-1	GND	1				
CTMM3	3_3UF	GND	1				
CTMM4	3_3UF	GND	1				
J5	JCONNECT	AVCC_SS	9				
		GND	7	8	34		
J6	JCONNECT-1	GND	3	4	7		
		VSUN	1	2			
JPROG	JPROG	GND	1	7	8		
J_GYROX	JGYRO	GND	4				
J_GYROZ	JGYRO	GND	4				
LED0	SMDLED	GND	2				
LED1	SMDLED	GND	2				
LG2	100UH	VSUN	1				
LIN1	100UH	AVCC33	2				
		VSUN	1				
LIN2	100UH	AVCC33	2				
		VSUN	1				
LMM1	100UH	VSUN	2				
R3MM1	20K	AVCC_MM	2				
R3MM2	20K	GND	1				
RG2	20K	GND	1				
RGND1	0	GND	1	2			
RGND4	0	AVCC_MM	2				
		GND	1	1	2		
RLED0	560	VSUN	2				
ROSC	100KOHM	VSUN	2				
RPU1	100K	VSUN	2				
TP15	TEST_PAD	AVCC_MM	1				
TP28	TEST_PAD	GND	1				
U1	TPS79330DBVRG	AVCC33	1				
		AVCC_SS	5				
		GND	2				
U2	LM94022	GND	2	5			
U3	REF3225AIDBVT	AVCC33	3	4			
		GND	1	2			
U4	MSP430F1611	AVCC33	64				
		GND	11	53	62	63	
		VSUN	1				
U5	TPS79330DBVRG	GND	2				
		VSUN	1				
U6	A3901SEJTR-T	GND	3				
U7	A3901SEJTR-T	GND	3	4	5		
U8	MAX4072AUA_	GND	4	8			
U9	MAX4072AUA_	GND	4	8			
U10	MAX4072AUA_	GND	4	8			
U11	REF3212AIDBVT	GND	1	2			
U12	ADG708BRUZ	GND	3	9	10	14	
		VSUN	2	13			
U13	ADG708BRUZ	GND	3	9	10	14	
		VSUN	2	13			
U14	ADG708BRUZ	GND	3	9	10	14	
		VSUN	2	13			
U15	ADG708BRUZ	GND	3	9	10	14	
		VSUN	2	13			
U16	OPA334AIDBVT	AVCC33	6				
		GND	2				

# Power Pins Report ADCS

adcs\_gloss

Thu Mar 6 13:04:35 MET 2008

Ref Des	Device	Name	Power Pins	Remark
U17	OPA334AIDBVT	AVCC33	6	
		GND	2	
U18	OPA334AIDBVT	AVCC33	6	
		GND	2	
U19	OPA334AIDBVT	AVCC33	6	
		GND	2	
U20	TPS79330DBVRG	AVCC33	1	
		AVCC_MM	5	
		GND	2	
U21	AD7798BRUZ	AVCC_MM	9 13	
		GND	4 6 8 10 12	
		VSUN	14	
U22	HMC1043	AVCC_MM	12	
		GND	2 5	
U23	AD8552ARZ	AVCC_MM	8	
		GND	4	
U24	AD8552ARZ	AVCC_MM	8	
		GND	4 6	
U25	IRF7509PBF	GND	1	
U26	LTC3459ES6	GND	2	
U27	LT1761ES5-5	GND	2 3	
U28	ADXRS614BGZ	GND	F1 F7 G2 G6	
U29	AD7795BRUZ	GND	6 8 10 12 14 16 18 20	
		VSUN	22	

Total count 94

