

# TECHNIQUES FERROVIAIRES

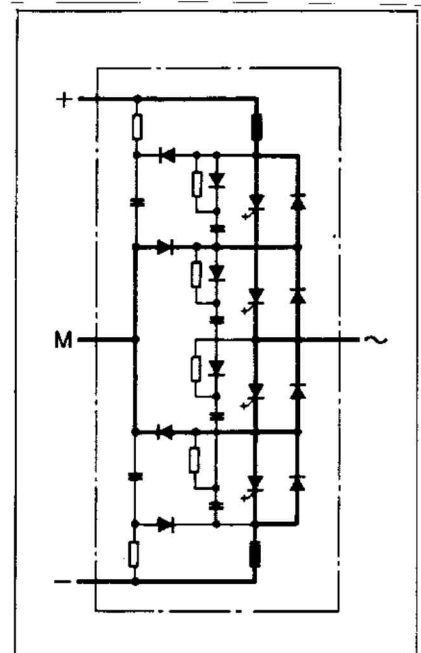
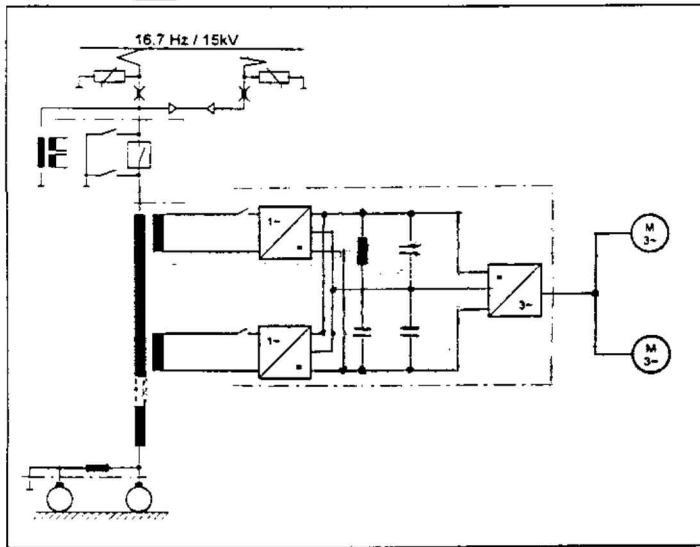
## Document accompagnant la question 92 (page 1)

**Locomotive puissance**  
- continue  
(- maximale)

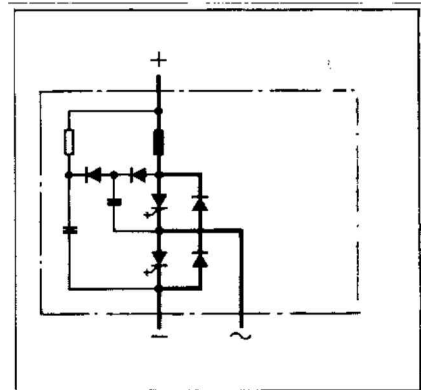
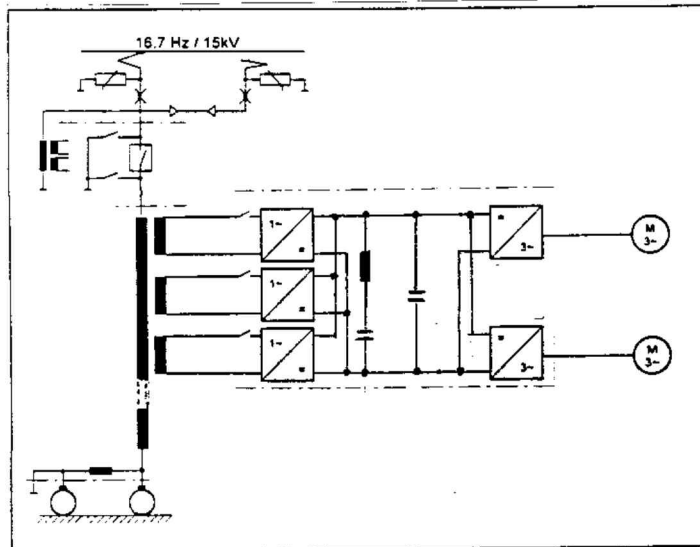
**Schéma de puissance**  
(pour 1/2 locomotive)

**Détail d'une branche de convertisseur**

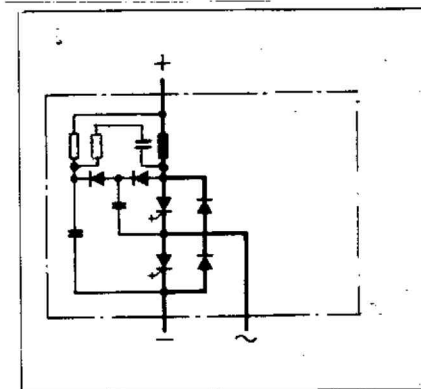
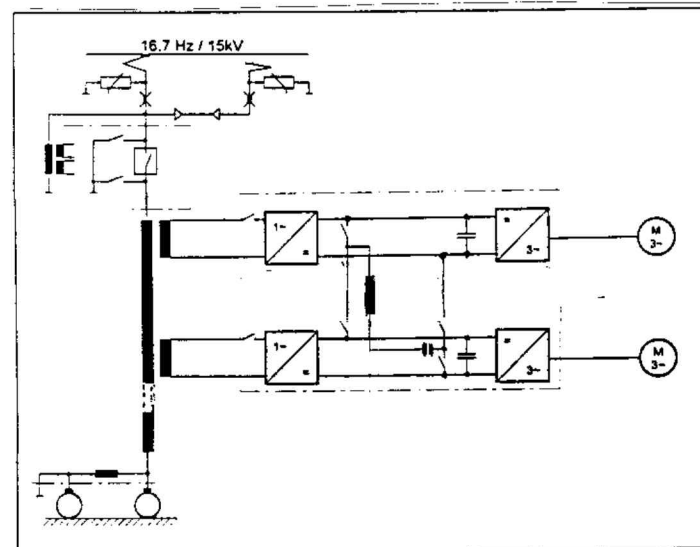
**Re 460**  
CFF  
1991  
4,7 [MW]  
(6,1 [MW])



**Re 465**  
BLS  
1994  
6,3 [MW]  
(7,0 [MW])



**101**  
DB  
1997  
6,4 [MW]  
(6,6 [MW])



# TECHNIQUES FERROVIAIRES

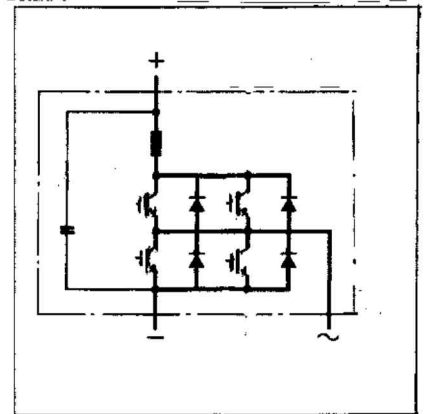
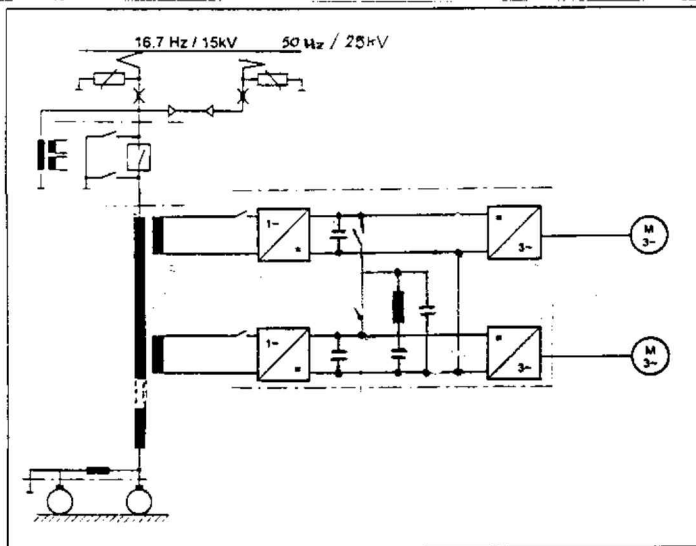
Document accompagnant la question 92 (page 2)

**Locomotive puissance**  
- continue  
(- maximale)

**Schéma de puissance**  
(pour 1/2 locomotive)

**Détail d'une branche de convertisseur**

**12X**  
ADtranz  
1997  
6,0 [MW]  
(6,3 [MW])



Remarque: côté transformateur, il y a 3 IGBT en parallèle.

**Diagramme d'effort**

