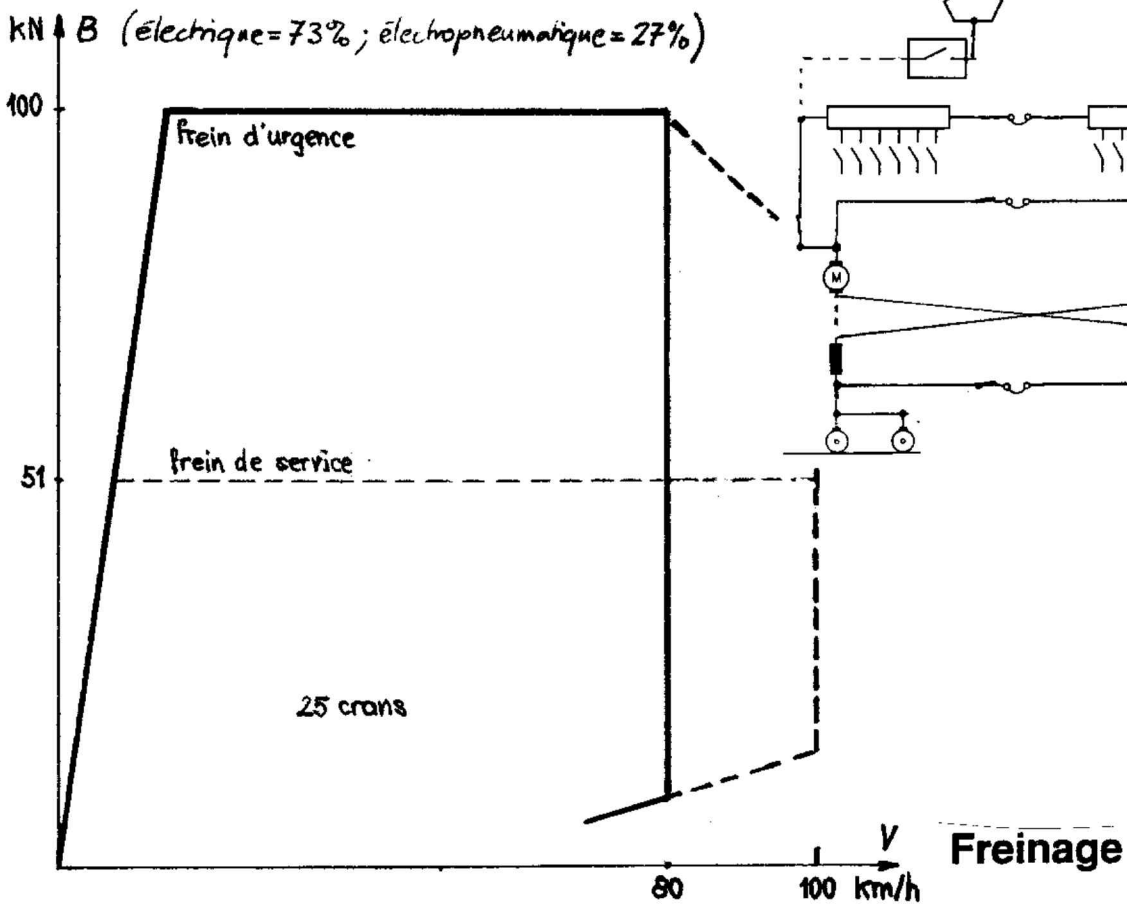
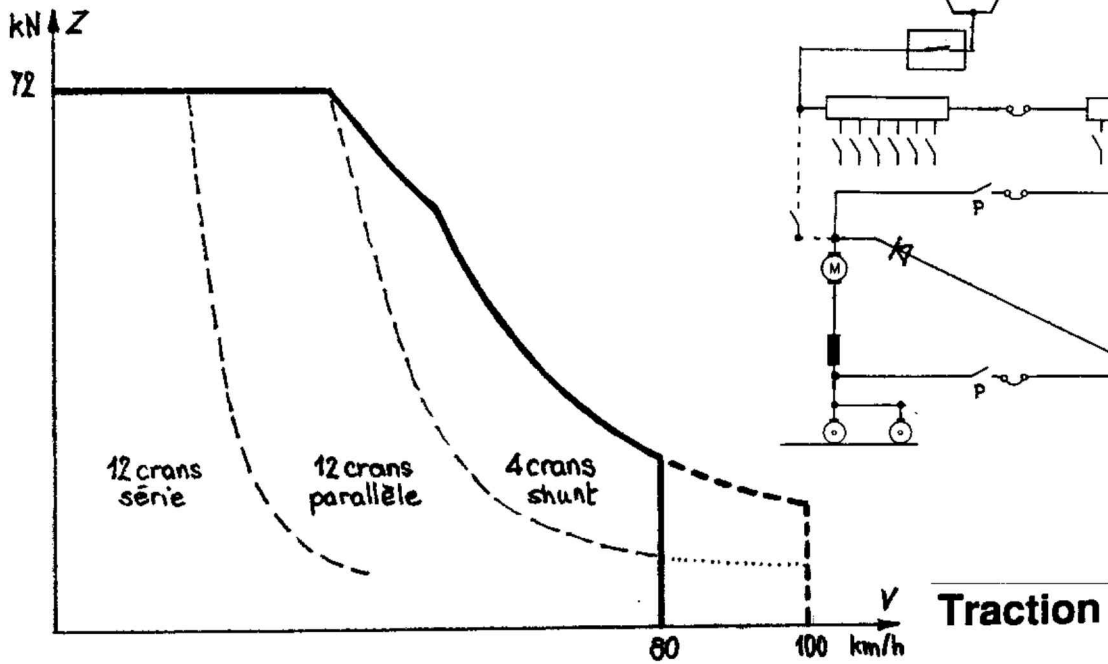
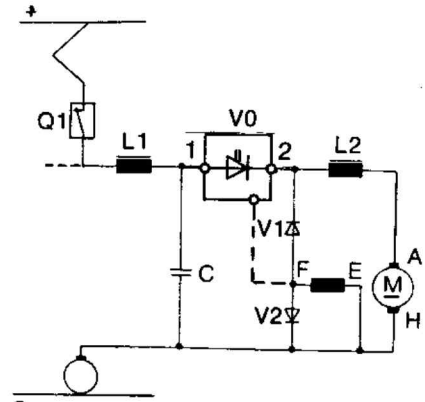
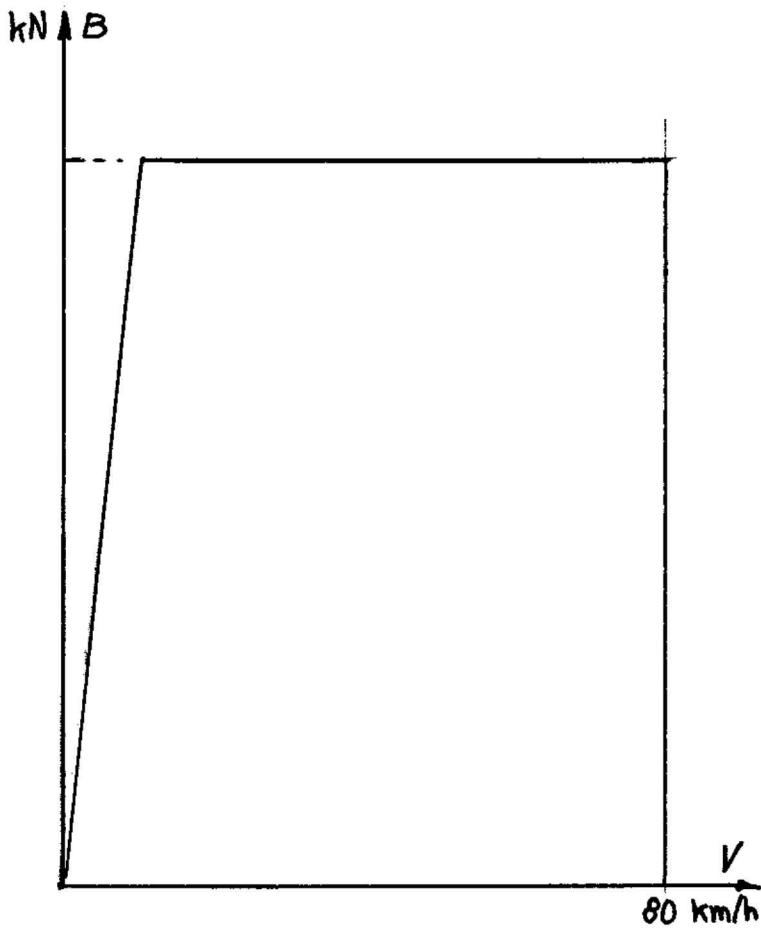
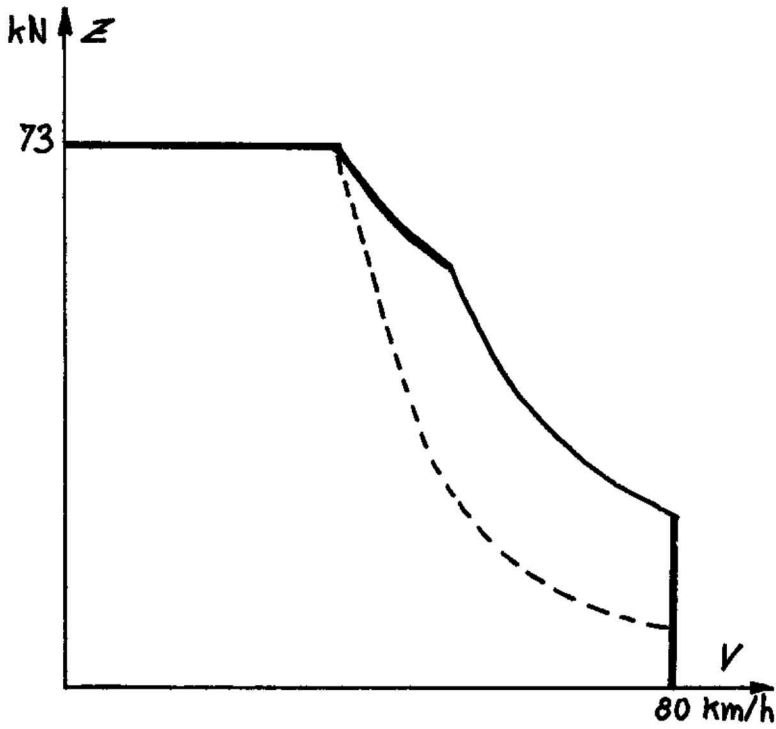


TECHNIQUES FERROVIAIRES
 Document accompagnant la question .59. (page 1)

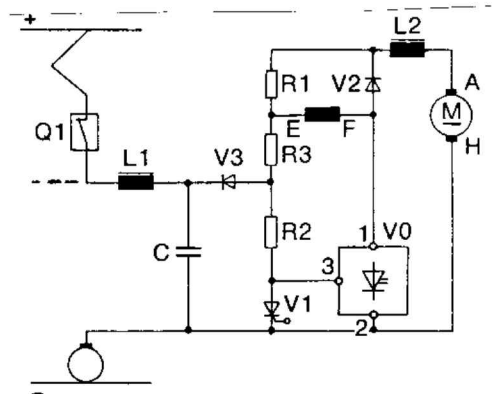
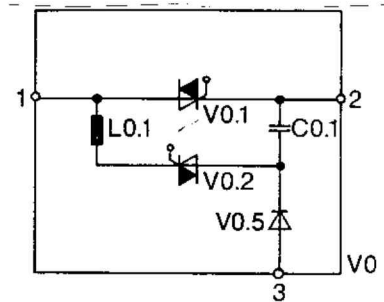
B 80 (B100) 1973 - 1985 Köln, Bonn, Essen...
 P = 440 kW



B 80C Essen... 1981-87
P = 440 kW

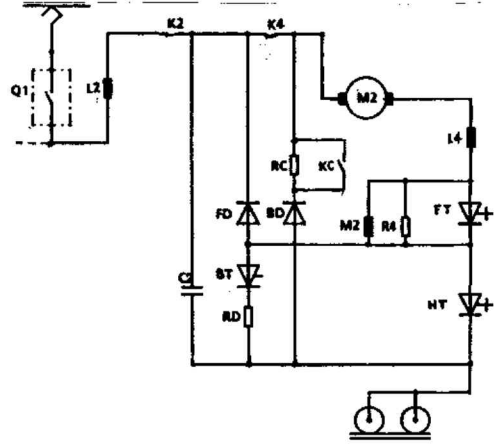
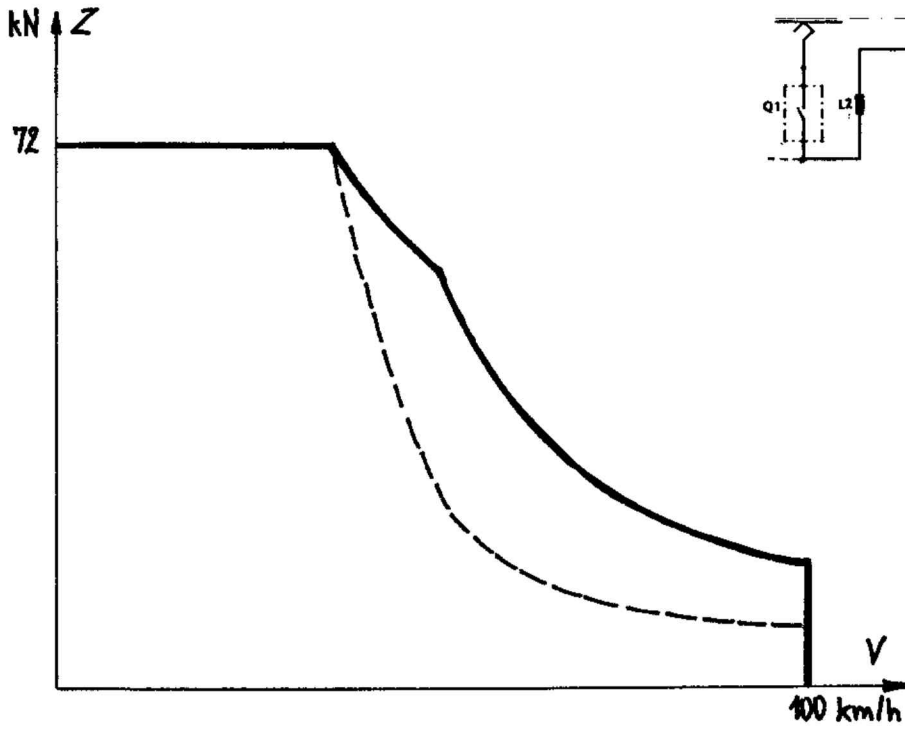


Traction

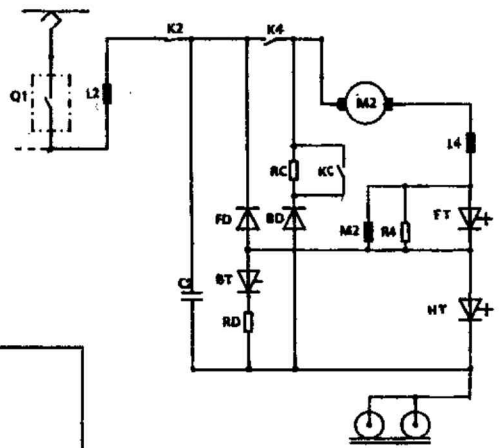
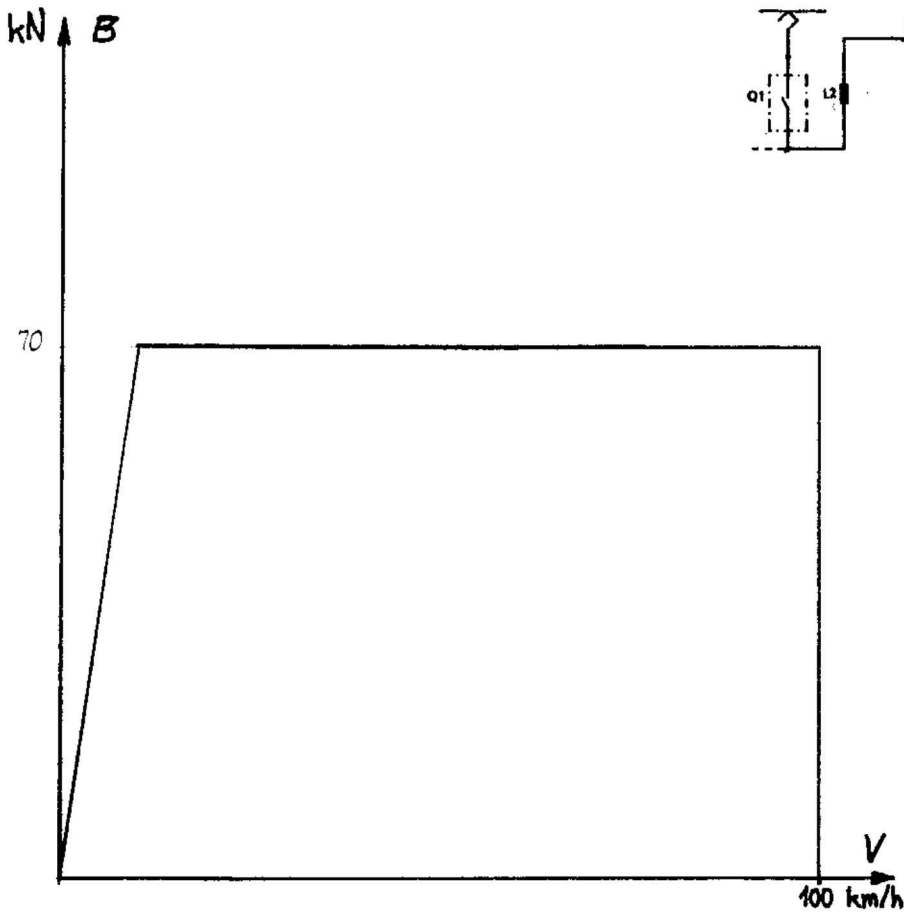


Freinage

B100C Bonn 1992-1993
P = 440 kW

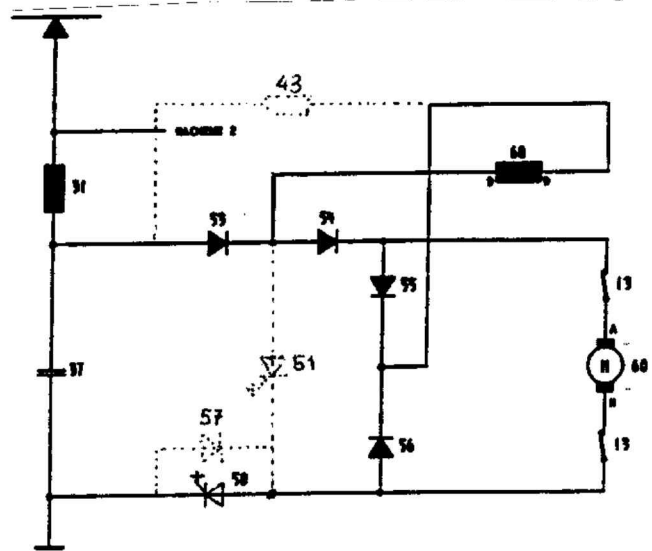
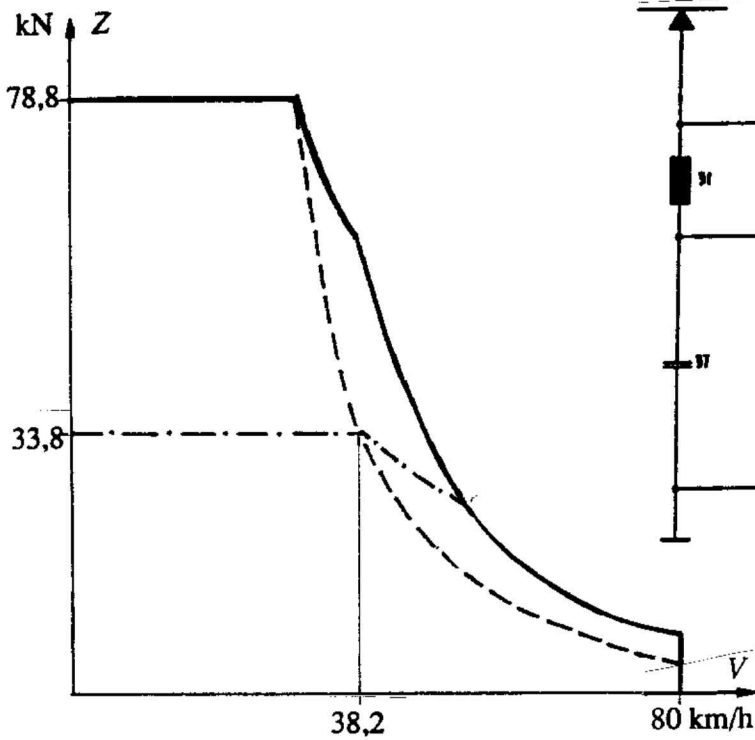


Traction

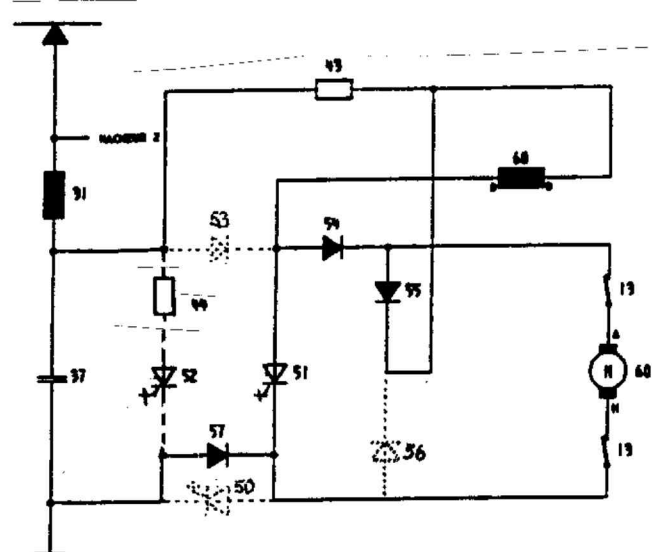
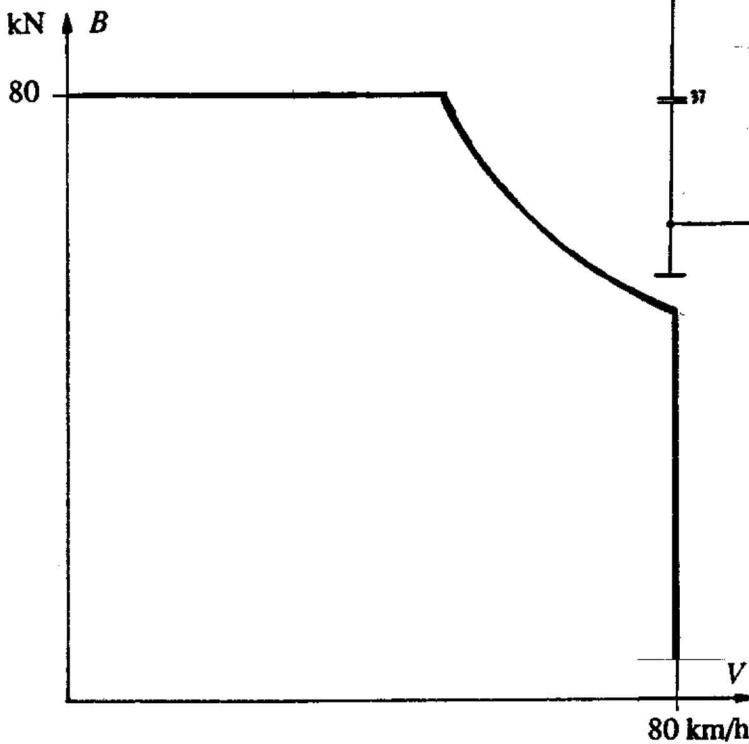


Freinage

Bem 4/6 Lausanne 1991-1995
 $P = 380 \text{ kW}$



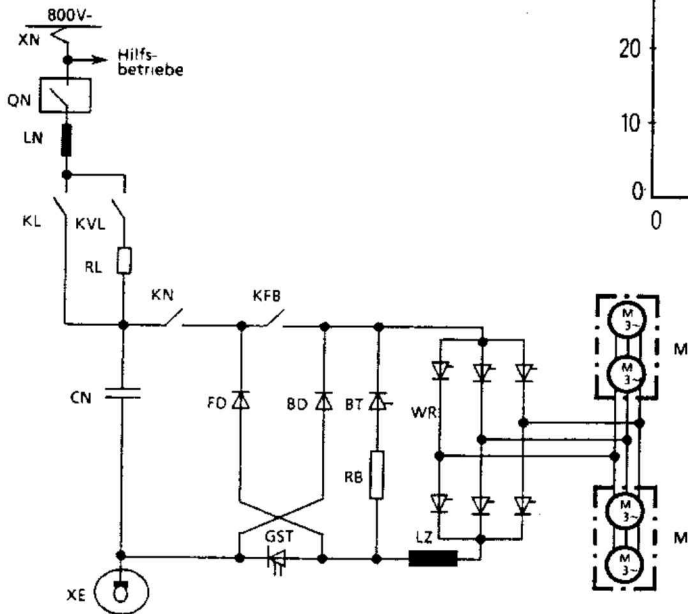
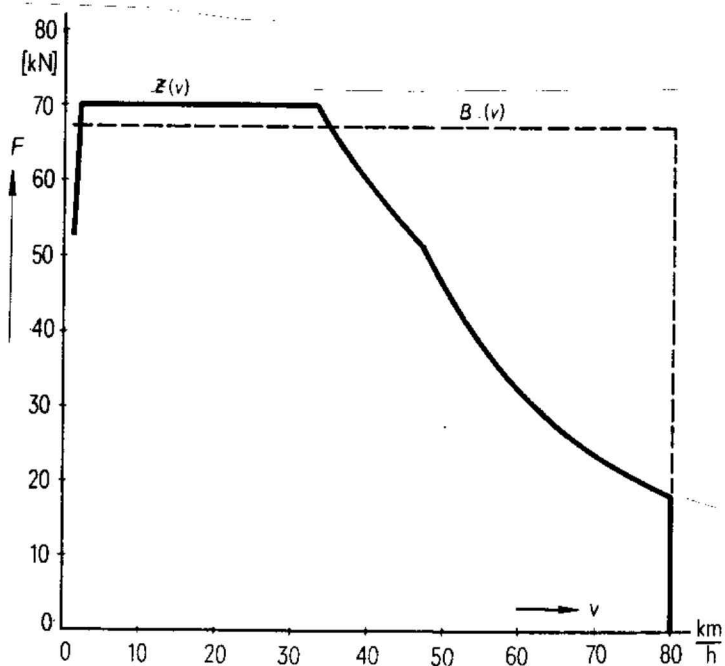
Traction



Freinage

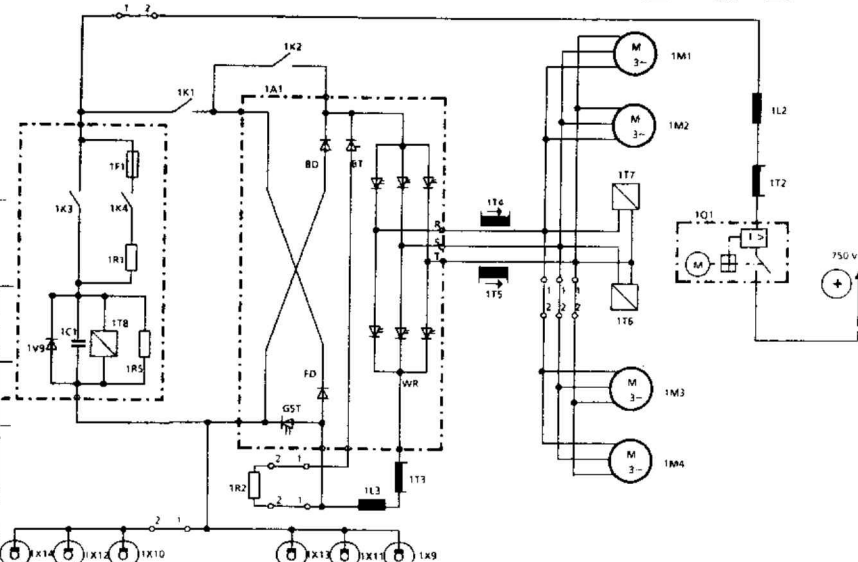
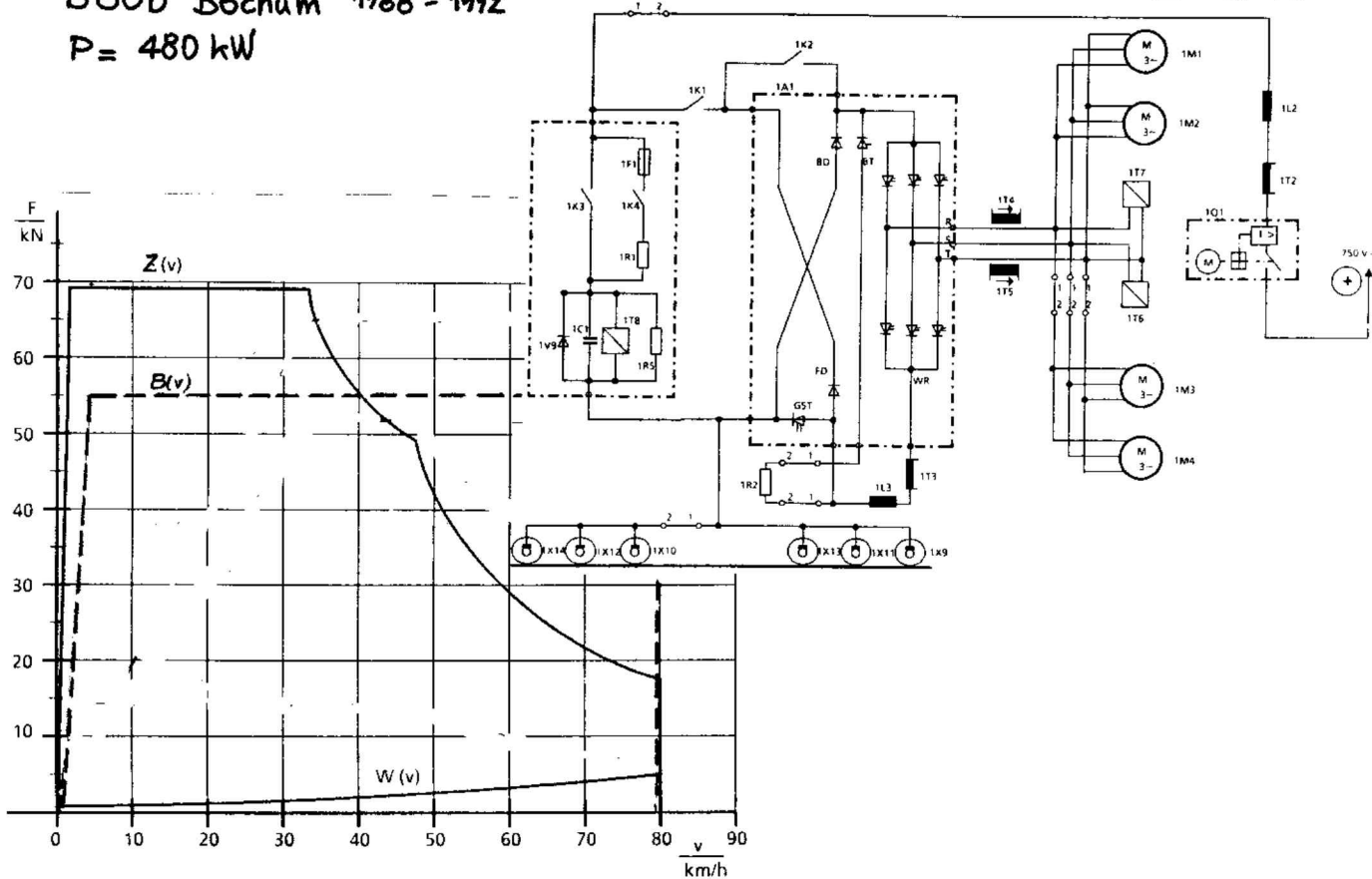
B 80 D Köln 1987-1992

P = 380 kW



B80D Bochum 1988 - 1992

P = 480 kW



Bem 550 1994

P = 575 kW

