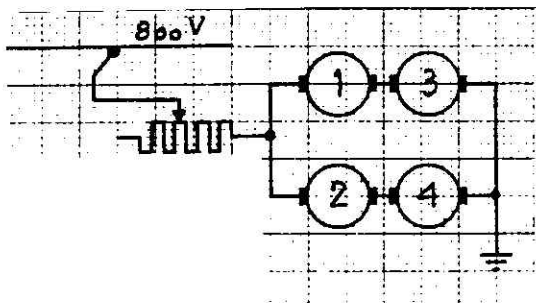


TECHNIQUES FERROVIAIRES
Document accompagnant la question .56



$$R_m = 56 \text{ m}\Omega$$

masse automotrice: 37,7 t coeff. masses tournantes: $\xi = 1,25$
 " voiture-pilote: 15 t " " " $\xi = 1,05$
 voyageurs: automotrice: 63 ; voiture: 60

