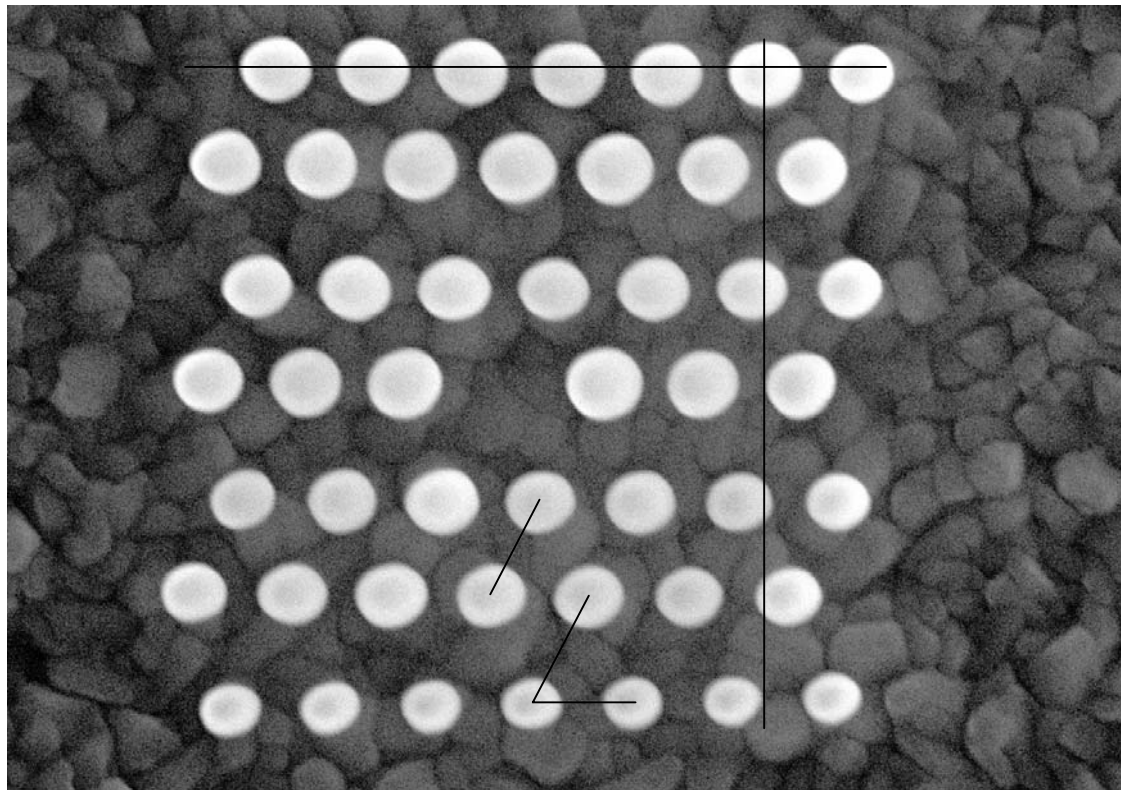


7x7(-1) pattern with 600nm dot-to-dot distance
Au-C pillars on 100?nm SnO/glass



Measured dot-to-dot distance

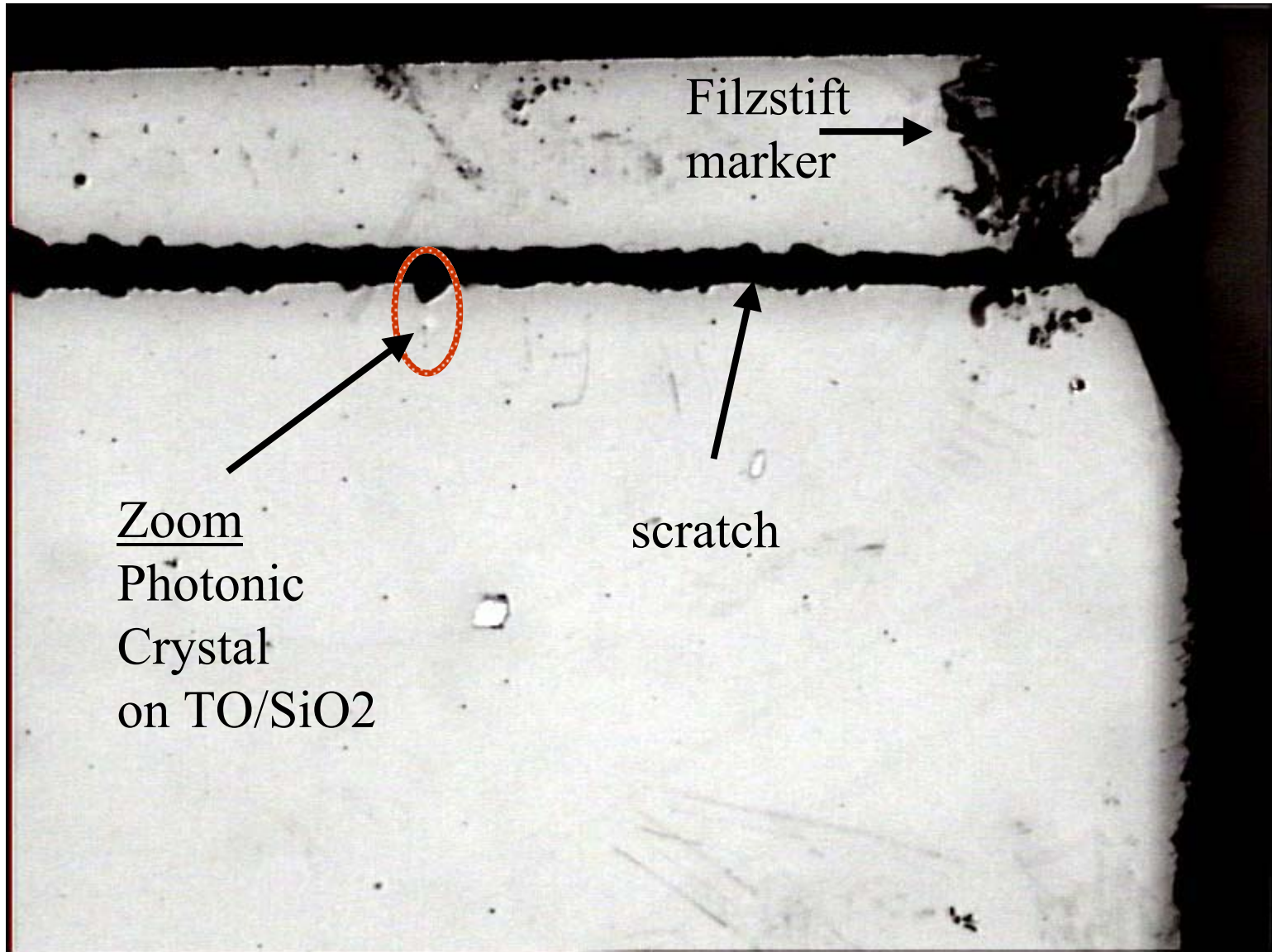
Horizontal: 553nm

Diagonal: 647nm/572nm

Total Enveloppe

Length: 3.768um

Height: 3.707um



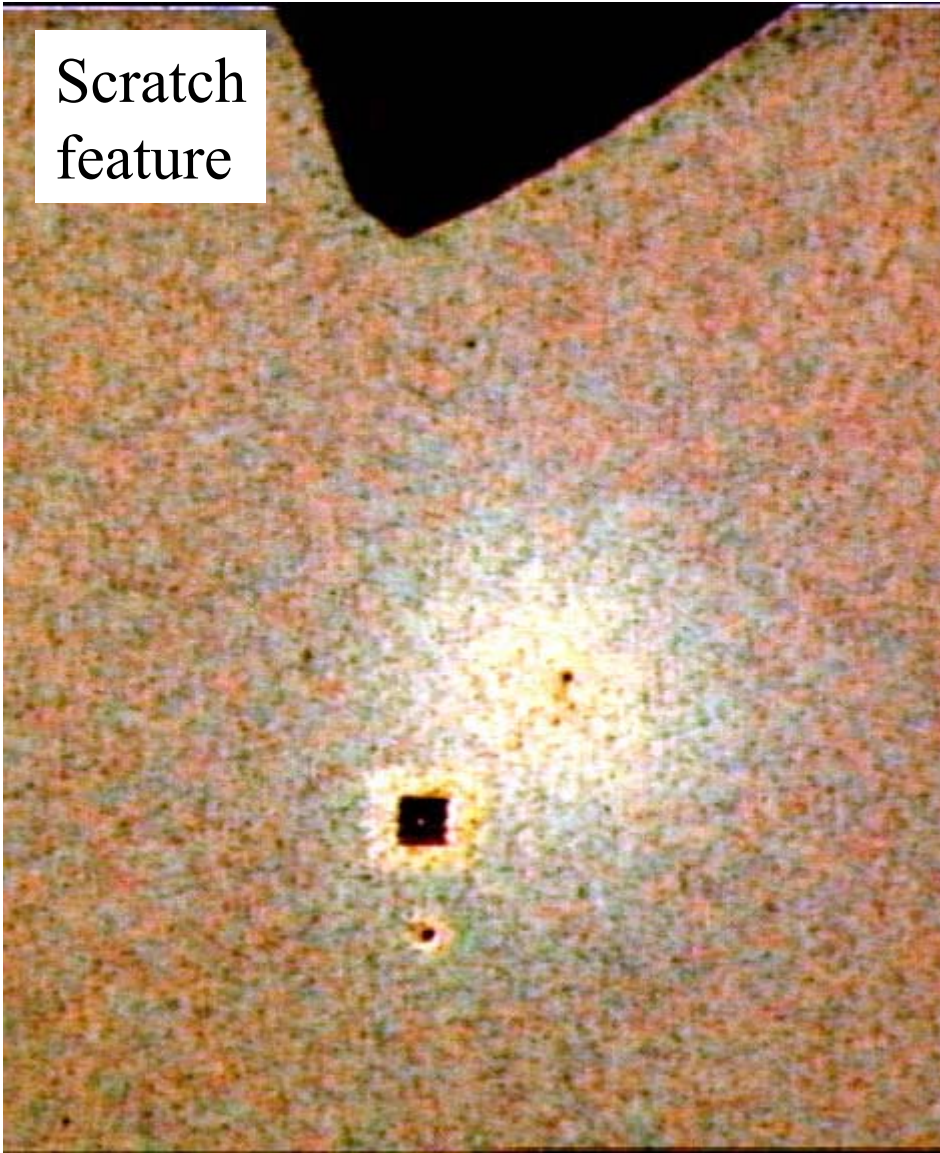
Zoom
Photonic
Crystal
on TO/SiO2

Filzstift
marker →

scratch ↑

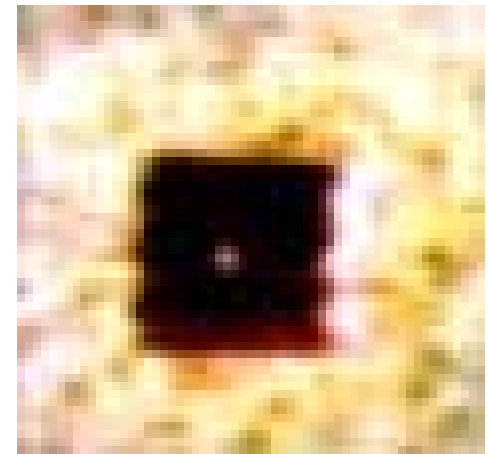
Zoom

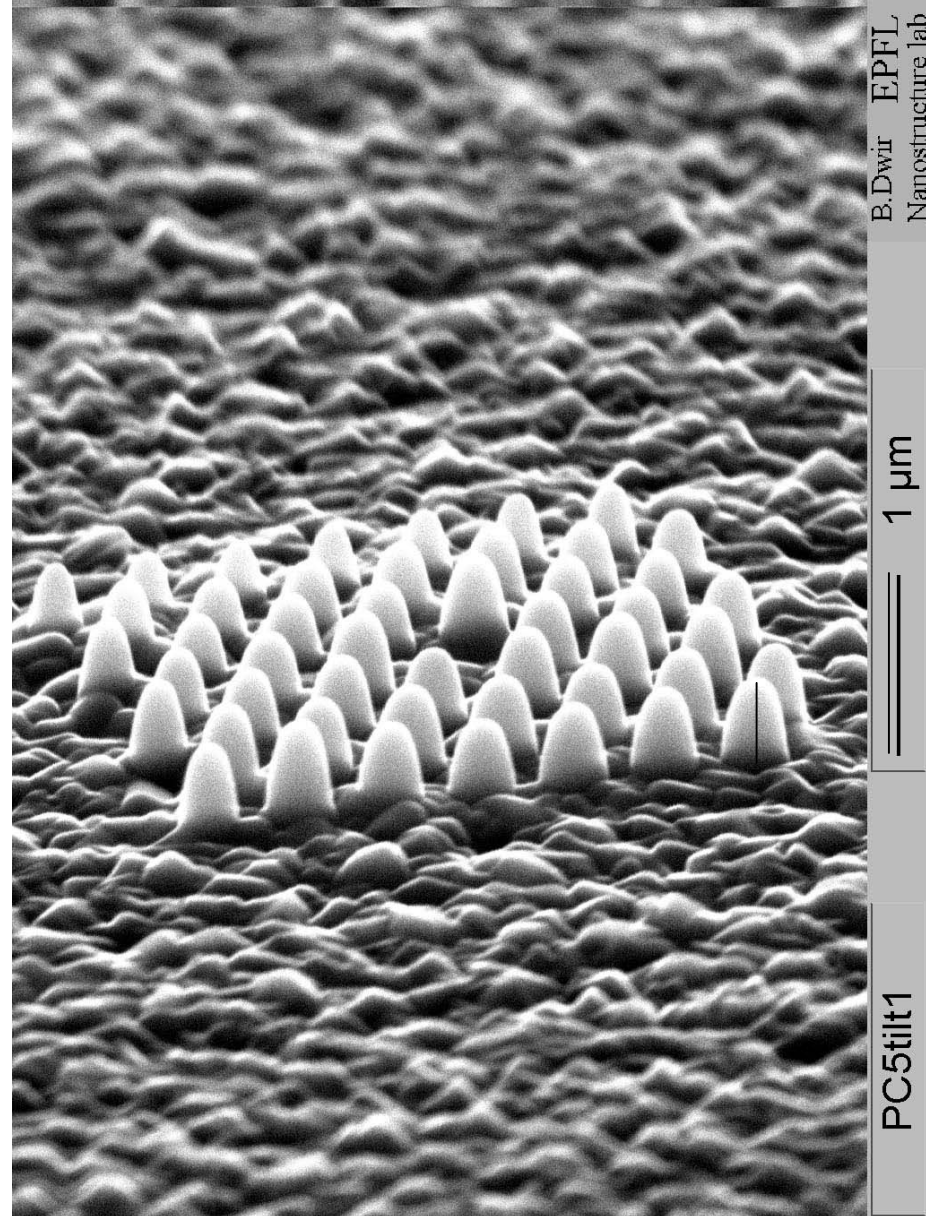
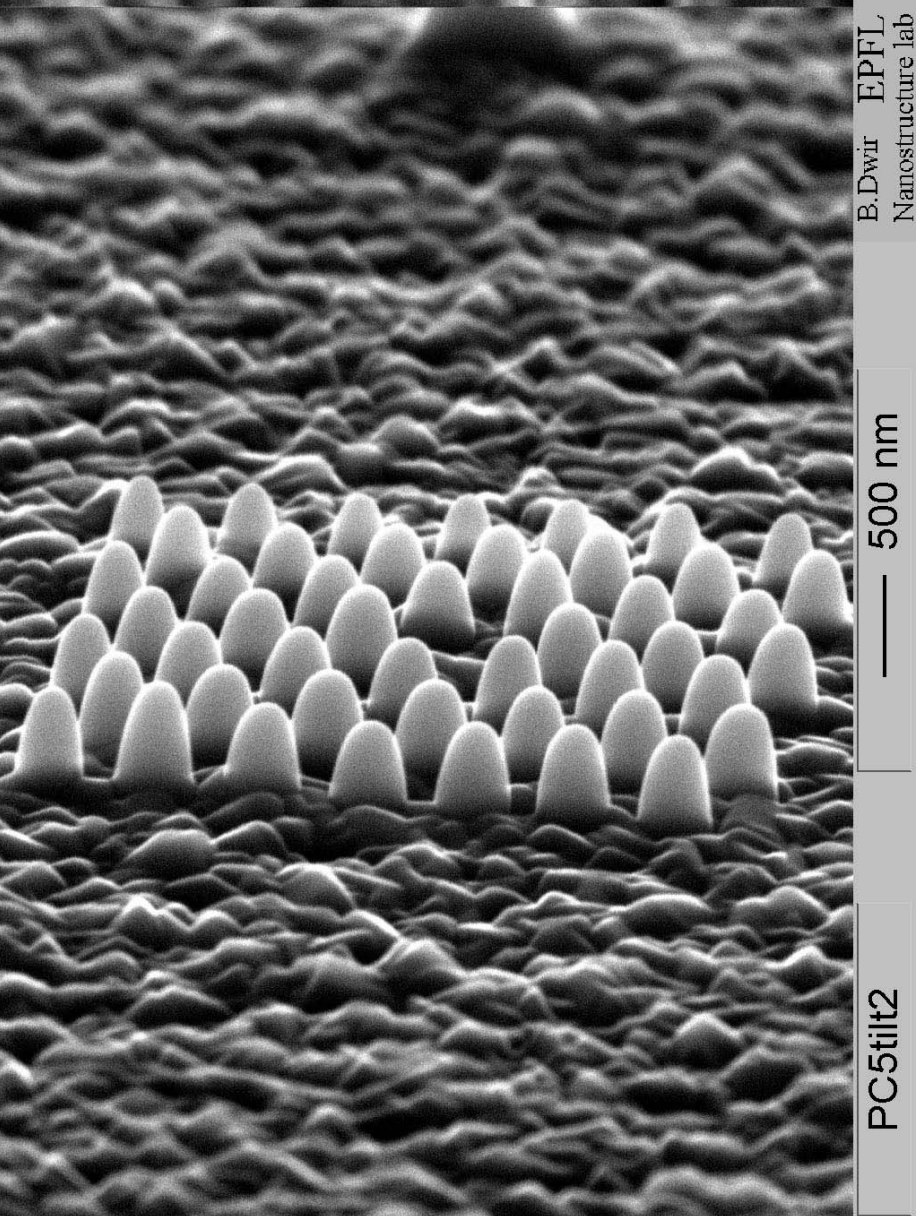
Scratch
feature



Optical microscope (Thomas)
Image 50x/0.7 HD
Reflection

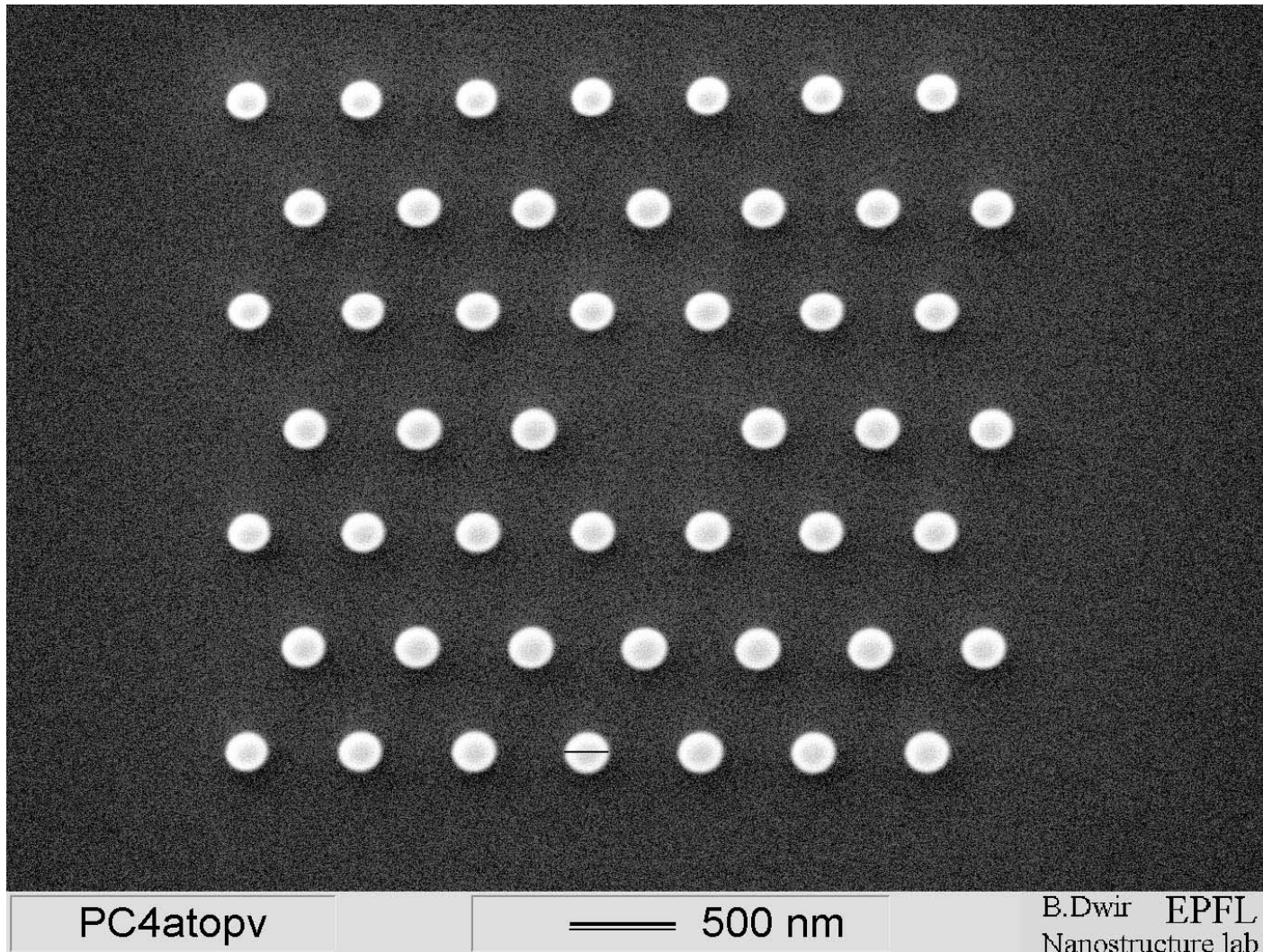
Square: $3.7\mu\text{m}^2$





SEM tilt image

$L=445\text{nm}$, deposition rate: $445/50\text{sec}=8.9\text{nm/s}$ (after 3h)



PC 4a: same deposition parameters as for PC 5 but on Si
Bottom diameter: 206nm